

## Teets shows grand champ Angus bull at Western Pa preview

MERCER — Cecil Teets, Freedom, exhibited the grand champion bull at the Western Pennsylvania Angus Preview Show held here recently at the Mercer 4-H Park.

The bull, Gallaghers Paul

Revere, was also the junior champion bull before being tagged by show judge Ronald Bolze, Loysville, as the grand champ.

Reserve grand champion bull was Rally Adventure 1028, the senior champion,

shown by Mr and Mrs Raymond Tait, Mercer

The open and junior show heifer championships were won by the same animal

Grand champion was MB Master Princess 935, the intermediate champion

shown by Kirke McKean of Mercer

Allan McKean had the reserve grand champion,

MB Power Girl 920

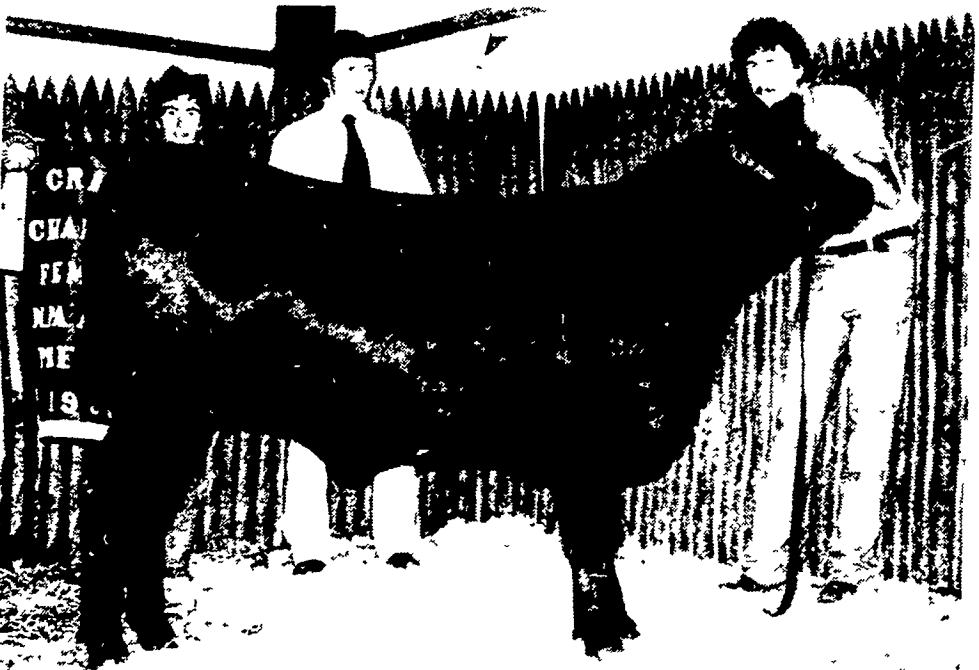
McKean Brothers, Mercer, exhibited the best six head of breeding cattle in the

open show and showed the first place get-of-sire group

Dale Rains of Mercer, had the junior get-of-sire winner



Cecil Teets, Freedom, showed this grand champion bull at the 1980 Western Pennsylvania Angus Club Preview Show at the Mercer 4-H Park, Mercer. The bull is Gallaghers Paul Revere.



Grand champion heifer of the open and junior divisions was this entry of Kirke McKean, Mercer, Pennsylvania. The heifer is MB Master Princess 935. Photo by American Angus Association.

## Local airports regulated

WASHINGTON, D C — Three more airports—Philadelphia International, Philadelphia, Pa., Port Columbus International, Columbus, Ohio, and Greensboro-High Point Regional, N C—have been regulated by the U S Department of Agriculture because of high Japanese beetle populations

Eight airports are now regulated. In addition to the three new airports, airline personnel—under USDA supervision—at McGuire (N J) and Dover (Del) Air Force Bases, Baltimore-Washington International, Douglas Airport at Charlotte, N C, and Greater Cincinnati Airport at Covington, Ky, are taking steps of keep the beetle off western-bound flights

Airports are regulated when Japanese beetle

populations become so high that it is possible the pests can be carried by departing airplanes into non-infested western states

Japanese beetles feed on over 300 different plants. The insect is spread over 22

eastern states but is unknown in the far west. USDA's Animal and Plant Health Inspection Service is responsible for keeping the pest from getting to these western states aboard aircraft

### Stone Damaged WINDSHIELDS REPAIRED!



- Optically clear and strength restored
- Fraction of the cost of replacement

Call your NOVUS METHODman™

215-376-9772 at our location

SHAPPELL/NOVUS

Div of Shappell, Inc  
1141 Penn Ave (Rear)  
Wyomissing, PA 19610



## ★ AUGUST SPECIALS ★

### 10% OFF ON CASH SALES ON

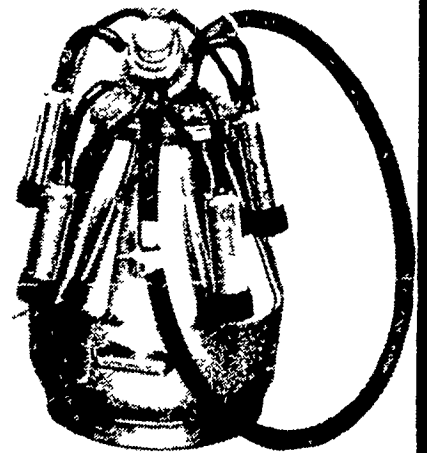
- ★ AUTOMATIC WASHERS
- ★ FIBERGLASS WHEELBARROWS
- ★ ALL RODENT, PEST AND FLY CONTROL PRODUCTS
- ★ LIQUID GLASS

### AUGUST IS THE MONTH TO PAINT MILKHOUSES AND SILOS



#### AMERICAS VACUUM REGULATOR

- Excellent vacuum stability
- Rapid response
- Coil spring controlled
- Large capacity to handle through 5 HP
- Easy to install • Easy to adjust
- No filters to clog or replace — not bothered by dust or dirt
- Heavy-duty construction throughout
- Easy to hose clean • American made



#### AMERICAS NU-VAC BASIC PUMPS

Each basic pump assembled with automatic oiler and packaged in sturdy wood crating. Standard unit designed to replace competitive pump assemblies. All Americas pumps are guaranteed against factory defects in workmanship and materials for one year from installation. Americas pumps give the efficiency needed in the modern dairy installation.



- Each claw produces its own vacuum • Reduces teat end sphincter damage • Eliminates vacuum fluctuations • Milks out faster and more complete at lower pressure
- Lowered vacuum promotes better herd health • 360° visibility • Milk flow controls convenience • Triples life of rubber liners • Lightweight reduces fall off

• We Now Have An Automatic Washer For The Bodmin Nu-Pulse Bucket Systems.

• A Complete Line of Bodmin Nu-Pulse Parts In Stock.

**Hanover Shoes**  
for men and women

**Coleman**

**AMSOIL**

SYNTHETIC LUBRICANTS

- We install & service complete vacuum & pipeline systems.
- Complete line of dairy detergents
- Animal health products
- Tools & hardware

Authorized Dealer for Southern Lancaster County & Chester County

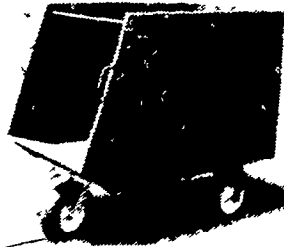
## Lapp's Hardware & Dairy Supplies

Superior Quality Products

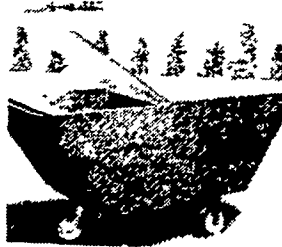
Box 96, Loop Rd., RD4, Quarryville, Pa. 17566

Phone: (717)-786-3970

### SILAGE AND FEED CARTS



34" Wide, 62" Long,  
53" high, capacity to feed  
35 to 40 Cows  
16 Ball Bearing wheels  
For very easy handling



28" wide, 60" long,  
35" high, capacity 600 lbs  
Choice of 10" pneumatic  
or semi pneumatic wheels

Many Other Sizes Available

We Also Manufacture Swivel Casters for 16", 12" and 10" wheels  
MANUFACTURED AND DISTRIBUTED BY  
**SCENIC ROAD FARM SUPPLY**

3539 Scenic Road  
Gordonville, Pa 17529  
2½ Mi Southwest of New Holland  
1½ Mi N of Intercourse

— AUTHORIZED DEALERS —

**AARON S. GROFF & SON**  
RD #3 Ephrata PA 17522  
Phone (717) 354-4631

**IRVIN J. PEACHEY**  
Star Route Box 35  
Belleville, Pa 17004  
Phone (717) 483-6714

**ATLEE F. REBERT**  
RD 2 Littlestown PA 17057  
Phone (717) 359 5863

**LAPP SHARPENING SERVICE**  
Gibble Road  
Route 2 Box 276  
Myerstown Pa 17067

— DELIVERIES AVAILABLE —

### TRUCK LOAD PLASTIC

PLASTIC COVERS



5% OFF  
TILL AUG. 17

**NEW**  
Fly Control  
Ectiban - WP  
Residual  
Spray

**DANIEL Z. ZIMMERMAN**

Animal Health  
Supplies & Livestock  
Equipment

Located between Leola & Talmage along Rt 772  
RD1, Leola, Pa 17540  
717-656-6982