

## All together — up she goes

SCHOENECK — More than 100 friends and neighbors of Rubin Weaver gathered at his farm along the Schoeneck Road in Ephrata Township yesterday to raise a large tobacco shed that had been destroyed by a tornado.

The shed, one of the largest in Lancaster County, was leveled in the late June

tornado that ripped through Ephrata Township damaging or destroying some 20 farm structures. The shed measures 150 feet eight inches long by 34 feet wide.

About one-fourth of the timbers were lost in the storm and had to be replaced with new white poplar timbers cut at E-Z Mfg. Co., New Holland.

Largest of the 8X8 timbers forming the lateral roof members measure 34 feet long.

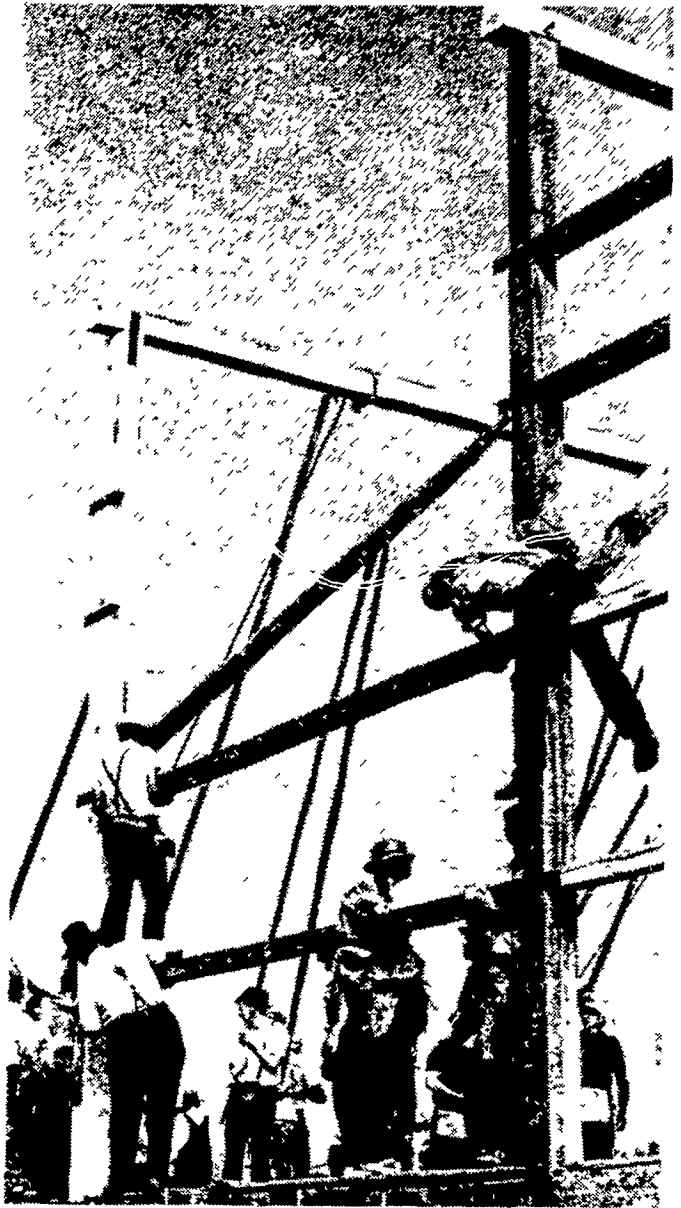
Directing the raising of the massive timbers was Isaac Hurst, of R1 East Earl.

"Up it goes, short ones first," he directed.

A little bit higher on the north end. Take it easy. Now, hold it in place."

The framework was fit together like a large puzzle. Each piece pre-cut, notched and marked for the assembly.

By day's end the entire framework and the roof were in place. The only change in the structure was the roof. The original hip roof was replaced with trusses.—DA



Large timbers are raised into place as large tobacco shed is rebuilt on Reuben Weaver farm along Schoeneck Road.

**We have sanded off the price on this 5" FINISHING SANDER**



★ Easy to Use

★ Saves Time

Reg. \$68.00

Your Price: **\$54.90**

At:

**BLUE-BALL MACHINE WORKS**

P.O. Box 176

Blue Ball, PA 17506

PH: 717-354-4478

**Model B04520 Heavy Duty**

**NEW Just Stick On Your Sandpaper Round or Square**

**FEATURES:**

- Uses A Standard 5" Pressure Sensitive Sand Paper, Sticks to Base on Contact
- 6" Round and 4" Square Pads are Available
- Handy Palm Grip Type for Spot Work and Flush Sanding on all Four Sides of the Sander
- All Ball Bearing Construction
- Nice Balance and Weighs 2.4 lbs
- Double Insulated
- Ideal for Cabinet Makers and Auto Body Shops, etc

**SPECIFICATIONS:**

- Pad Size . . . . . 5"
- No Load Speed . . . . . 12,000 RPM
- Amps (115V) . . . . . 1.8A
- Dimension (LxWxH) . . . . . 4 1/2" x 4 7/8" x 5"
- Net Wt . . . . . 2.4 lbs
- Standard Equipment Sanding Papers (1 pc each of grit 60, 100 & 150) 5" Round Rubber Pad

# FRANK A. FILLIPPO, INC.

## — WANTED —

### DISABLED & CRIPPLED COWS, BULLS & STEERS

#### Competitive Prices Paid

Slaughtered under government inspection

**Call:**

**Frank Fillippo - Residence - 215-666-0725**

**Elam Ginder - 717-367-3824**

**C.L. King - 717-786-7229**