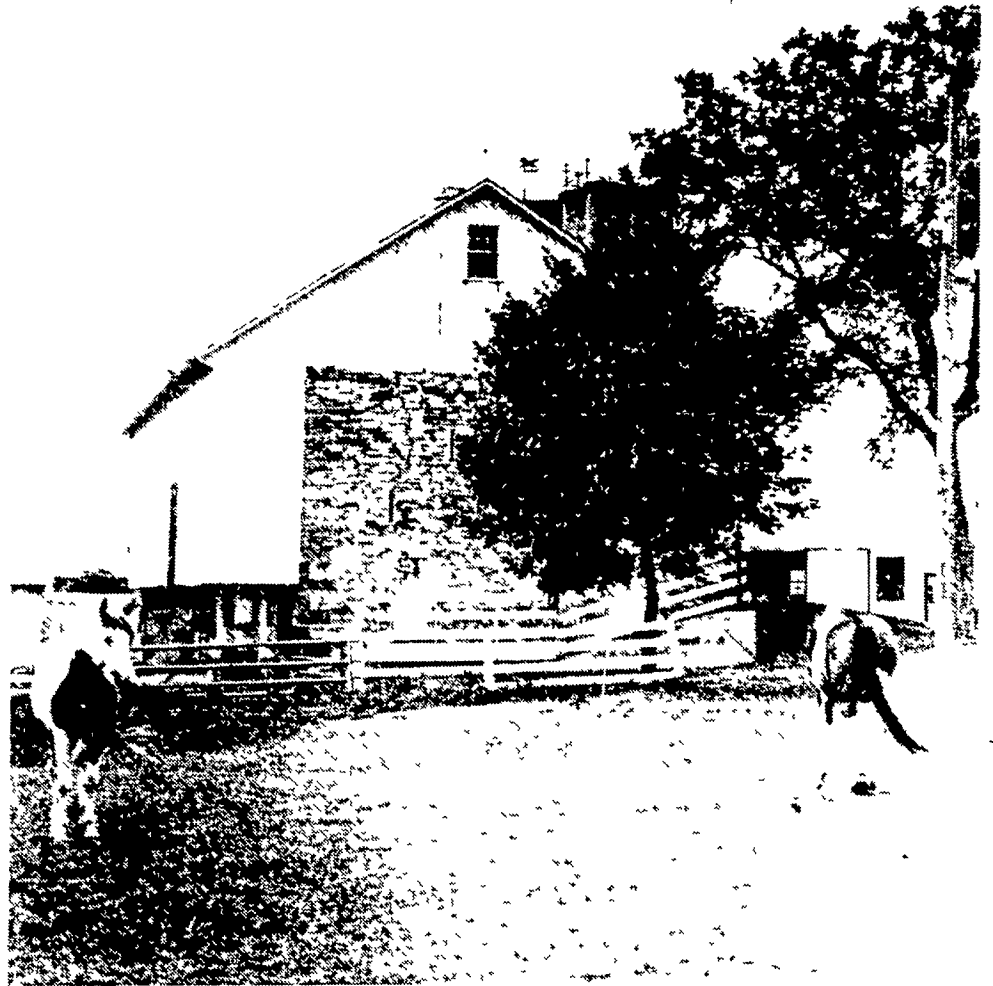


Some more on the silos of Lancaster County



Look-a-mal-doh

BY DICK ANGLESTEIN

LANCASTER COUNTY — Wandering the back roads and byways of Lancaster County, I participated again in a photographic pastime of silo seeking and spotting.

It helps to while away the hours of traveling from farm to farm.

If you look closely in the center of the top left photo, you can spot the shiny top of a silo that almost seems to be floating among the trees. In fact, it might be a farming flying saucer that's coming in for a landing on the road located in the southern section of the county.

As you drive down the road and the silo cap suddenly looms up in front, you almost get the impression that you're going to drive right into it. That might make a unique tourist attraction. Cut a roadway right through the silo and have the Lancaster County version of a California Sequoia road.

In the upper right photo, some contented pintos are lazing away a warm July afternoon on pasture; while their metallic counterpart (look closely) indicates not a stirring of a breeze on the top of the silo hidden behind the barn.

At lower left, a silo just outside Reinholds — no long used for storage — has become an oblong billboard. This might not be a bad idea for the dairy industry. What better vantage point for advertising wholesome values of drinking more milk than the many silos dotted across the countryside.

Paul M. Martin, of Indiantown Road, has a miniature version of those big blue tubes that supports his mailbox. It's complete with tiny ladder and all.

