

THINK **Cheese**  
FOR THE BALANCED DIET

**NOW!**

**Alfalfa** • Spray to protect from leaf hopper

- Fertilize to insure production
- Fertilize & herbicides for new seedlings

**Tobacco** • Custom application of sucker control

**Lime** • Now on small grain stubble fields

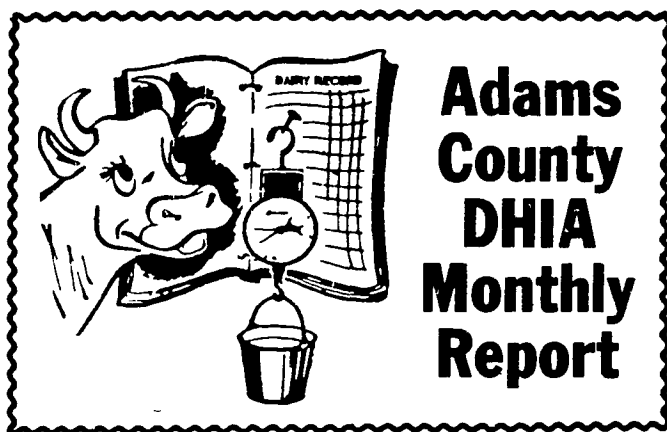
Call Us for **ALL** of the Above **SERVICES**

BULK BLENDS  
**MASTER FARMER**  
ANHYDROUS AMMONIA

**ORGANIC PLANT FOOD CO.**

2313 NORMAN ROAD,  
LANCASTER, PA. 17601  
PHONE: 717-397-5152

★ CLOSED SATURDAYS IN JULY & AUGUST



**Adams County DHIA Monthly Report**

June 1980

OWNER	BRD	NO COWS	% DAYS IN MILK	LBS. MILK	% FAT	LBS FAT
Noel & Holmes	3	59 0	84 4	53 9	4 0	2 13
El Rho Farm	3	52 5	94 1	42 8	3 9	2 05
Yellow-Buttercup Farm	3	110 4	91 0	49 4	4 0	1 98
Mervin K. Myers & Sons	2	56 6	89 4	39 9	4 8	1 93
Oscar Winters	3	10 6	100 0	50 1	3 8	1 88
James E. Miller	2	32 0	84 1	35 6	5 3	1 88
Ray Dutterer	B3	54 7	94 2	46 6	4 0	1 88
Richard K. Herr	B3	69 5	90 8	56 0	3 4	1 88
Stoner Bros Dairy	G3	64 0	92 1	48 6	3 8	1 87
Leroy Deputy	B3	106 8	88 9	64 0	2 9	1 87
Jonas M. Beiler	B3	38 0	92 1	50 2	3 6	1 83
Buttonwood Farms	3	116 8	87 5	48 2	3 8	1 82
Wayne H. Rodgers	B3	73 1	89 0	44 3	4 0	1 78
Zeppdale Farms	B3	107 2	87 4	46 5	3 8	1 78
Robert & Linda Meyers	B3	55 5	97 6	48 1	3 6	1 75
Claude Holmes Jrs	3	41 0	88 8	42 2	4 1	1 75
Adam F. Lobaugh	3	43 1	85 8	46 2	3 8	1 74
Frank Ludwig	B3	37 5	88 1	45 6	3 8	1 71
Richard K. Herr	B3	70 5	90 2	55 2	3 1	1 71
Richard Mills	G3	55 7	82 3	40 6	4 2	1 70
Weim Sharr Farms	3	73 1	82 9	48 4	3 5	1 70
Donald Todt	B3	42 4	77 9	42 7	3 9	1 66
Eugene Witter	B3	42 0	98 0	45 3	3 6	1 64
Oscar E. Mehring	B8	35 8	93 3	41 0	4 0	1 64
James C. Behney	B3	50 0	88 8	43 5	3 7	1 62
William Myers	B3	50 0	88 5	47 8	3 4	1 61
M R & C S Durboraw	B3	49 4	92 0	42 0	3 8	1 58
Kraybill Miller	B3	39 0	84 1	39 3	4 0	1 56
Stone Manor Dairy	3	47 0	79 2	47 7	3 2	1 53
Guy Tanger	3	33 0	82 1	43 1	3 5	1 51
Roy A. Weaner, Jr.	B3	57 8	78 8	39 5	3 8	1 51
Penn Gate Farm	3	33 7	83 6	46 0	3 3	1 50
John J. Hess	B3	100 3	86 4	43 3	3 4	1 48
Penn Gate Farm	3	34 0	78 5	44 0	3 3	1 46

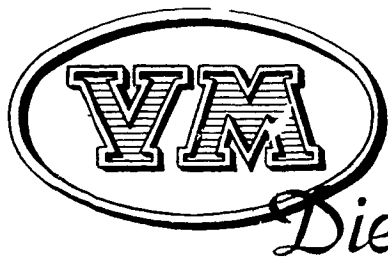
**Lancaster Farming, Saturday, August 9, 1980—D15**

Glenn & Janet Lippy	B3	117 3	89 6	39 5	3 7	1 45
Robert L. Rohrbaugh	G3	55 3	81 4	41 7	3 5	1 45
Shamrock Farm	B3	55 8	89 2	40 2	3 6	1 44
William G. Inskip	G3	52 0	90 6	38 3	3 7	1 43
Pleasant Acres	G3	52 0	80 7	35 1	4 0	1 40
Ber Crk	3	60 3	85 5	40 6	3 4	1 40
Roger L. Sprague	B3	52 6	85 5	37 9	3 7	1 39
M J. Starner & Sons	B3	105 5	80 8	33 3	4 1	1 38
William C. Mearns, Jr	B3	70 3	68 6	37 1	3 7	1 37
Getty Acres	B3	157 5	79 5	38 2	3 8	1 37
Rinker Bros	G3	42 3	87 9	35 6	3 8	1 35
Way Brite Farms	B3	121 0	84 1	35 0	3 7	1 31

Following are all complete lactations of 600 pounds fat or more

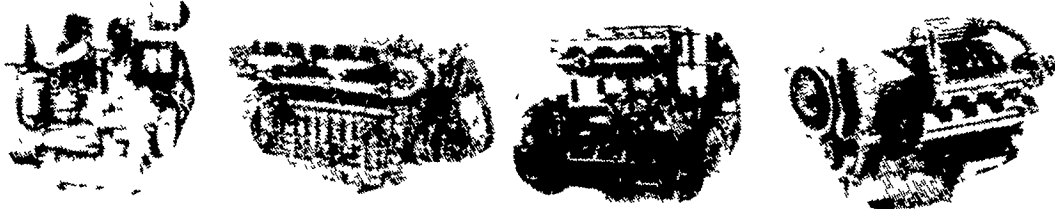
OWNER NAME OR NUMBER	BREED	AGE	DAYS IN MILK	LBS MILK	% FAT	LBS FAT
Noel & Holmes						
Peppie	3	6-11	305	21,528	4.0	859
Emera	3	6.6	305	19,823	4.3	857
Loria	3	5.1	297	18,796	3.8	723
Alpha	3	4-5	305	25,217	3.4	848
Trinnie	3	4-8	305	25,111	3.8	943
Tippie	3	3-0	305	16,761	4.2	712
Stoner Bros Dairy						
Linda	3	4-3	305	16,661	3.9	642
Barb	3	3-10	305	22,330	3.9	862
Hippy	3	3-7	297	15,099	4.1	614
Patsy	3	3-5	305	19,587	3.7	720
Penn Gate Farm						
14	3	4-6	305	15,980	3.9	624
Pennstead Farm						
Fanie16	3	5-3	305	19,455	3.7	720
Adam F. Lobaugh						
Estelle	3	6-5	305	16,355	3.7	612
Mervin K. Myers & Sons						
Dafodil	2	8-3	305	15,252	4.6	699
Primros	2	6-9	304	12,101	5.4	652
M J. Starner & Sons						
118	3	4-10	305	19,573	3.8	740
131	3	7-9	305	16,404	4.0	656
Buttonwood Farms						
Reflect	3	8-3	305	15,259	4.0	615
Melle	3	7-7	289	17,884	3.6	646
Leona	3	4-1	305	18,934	3.7	709
Arlene	3	3-10	305	17,980	3.5	623
Patsy	3	6-11	305	18,963	4.0	761
Jiff	3	3-2	305	14,722	4.1	600
Double	3	3-4	305	16,151	3.8	613
James E. Miller						
Lindy	2	3-5	305	12,345	5.1	635
Roy A. Weaner, Jr						
21	3	5-1	305	15,049	4.2	634
37	3	4-1	305	15,243	4.6	696

(Turn to Page D17)



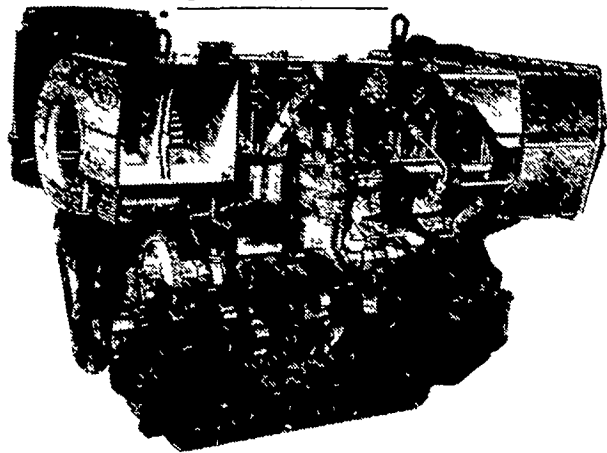
**REPOWER With VM DIESEL**

Harvesters, Haybines,  
Tractors, Cornpickers,  
Balers, Hydraulic  
Systems, Corn Binders  
Choppers

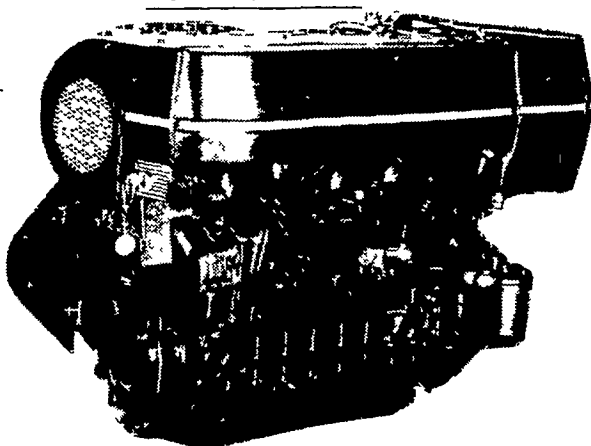


**All New HR Series**

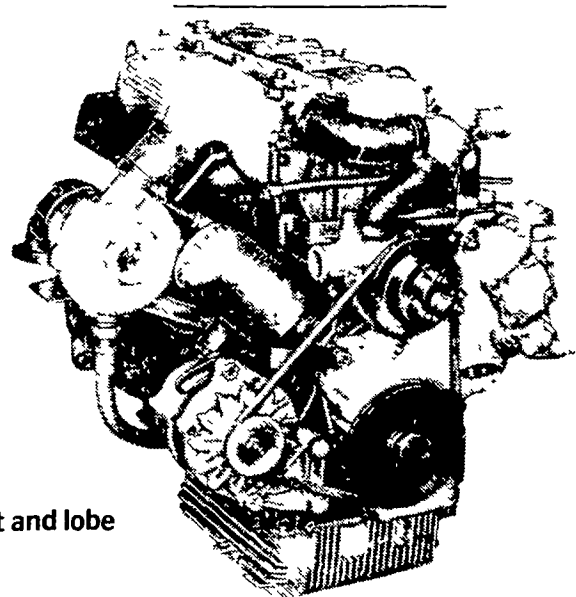
**OIL COOLED**



**AIR COOLED**



**WATER COOLED**



**General Features:**

- Integrally cast cylinders with inserted and removable wet type cylinder liners
  - Light hypereutectic alloy pistons
  - Extra-resistant steel connecting rods alloyed with special alloy head bearings
  - Surface hardened steel crankshaft
  - Drop-forged, casehardened and tempered steel camshaft
  - Anti-friction cast-iron tappets alloyed
  - Cast-iron tunnel type crankcase
  - Rotary injection pump with mechanical governor
  - Force-feed lubrication with built-in circuit and lobe type pump
  - Diaphragm pump feed
  - Oil and fuel filters with integral type element.
- Special structure and patented engine with consequent increases in performance and easier operation with low weight/output ratio low smoke emissions.
- Engine based on a design "modulus" formula which allows a maximum parts standardization and interchangeability.

**USED DIESELS**

- SR 2 Lister
- SF 3 Lister
- HRS 6 Lister
- 1 Cylinder Deutz
- DVA 2200 Sianzi

Call Us About Our

**CASH REBATES** on DAN and V-Series Engines

**SPECIAL: VM 1306 V SERIES**

**QUEEN ROAD REFRIGERATION**

Box 67, Intercourse, PA 17534  
Phone: John D. Weaver - 717-768-9006 or 768-7111  
or Answering Service - 717-354-4374

**24 HOUR SERVICE**