

Trickle irrigation to be seen at Ag Progress

ROCK SPRINGS — Trickle irrigation is the most economical way for farmers and gardeners to water berries, fruits, and some vegetables, in the opinion of William R. DeTar, agricultural engineer at Penn State.

DeTar and associates will demonstrate the benefits of trickle irrigation during Penn State's Ag Progress Days Tuesday to Thursday. If the summer weather continues dry, Ag Progress Days visitors will note full well the value of such irrigation, DeTar commented.

Headquarters for Ag Progress Days will be the

Rock Springs-Agricultural Research Center of Penn State, 9 miles west of University Park on Rt. 45.

Results of trickle irrigation will be shown on apples, strawberries, raspberries, cantaloupes, potatoes, cabbage, and cauliflower.

Savings in water and labor are the primary advantages over sprinkler irrigation, DeTar said. Low energy costs and low power requirements are additional reasons why many fruit growers in Pennsylvania are switching to trickle irrigation, he added.

Tours of strawberry plots will show, among other

things, how perforated plastic tubing irrigates only the root zone. Water is not wasted between the rows, and the weed problem is reduced, it was pointed out.

Harvesting operations are not interrupted by sprinkler operation and wet ground. Leaves and fruit are seldom wet, greatly reducing disease problems. There are no aluminum pipes to set up and above.

"The trickle irrigation system applies a little water daily, keeping soil moisture at a constant, favorable level," DeTar stated. "Most of the demonstration plots at Rock Springs have a tensiometer, an instrument to

detect soil moisture. Whenever moisture is needed, the tensiometer sends a signal to open a small, battery-operated control valve."

When very dirty pond water is used, the water passes through a sand filter so the small openings in the tubing will not clog.

Visitors to Ag Progress Days will be able to examine a large variety of irrigation tubing, fittings, and controls on display in the field. Several types of perforated tubing are being tested for reuse.

DeTar and associates are studying the conditions under which it is

economically feasible to irrigate horticultural crops. All plots are set up with un-

irrigated as well as irrigated sections, to determine the effect of watering on plant

growth, yield, and crop quality. Moisture budgets are maintained to predict the water use of a crop and the moisture level in the soil.

Perry 4-H'ers brush up on goat showmanship

ELLIOTTSBURG — A dozen members of Goats Galore 4-H Dairy Goat Club met on the lawn of their leader, Mrs. Janice Stydinger, Tuesday to get ready for the showmanship class at the annual goat roundup to be held on August 19 at the Perry County Fair in Newport.

Roberta Molaro in-

structed the members. The clinic began with an Antony Bee.

In the course of the evening Molaro had the 4-H'ers go through all the maneuvers that they will be expected to repeat the day of the fair, and helped them learn how to better handle their animals to show them to their best advantage.

Ephrata farmers

(Continued from Page D2)

"mornningglory," but, Yocum emphasized, that's not its name.

Alfalfa anthracnose is another problem for farmers not alerted to the problem before they choose a variety.

Best weapon against anthracnose is a resistant variety, of which there are several. Saranac-AR, Vanguard, Apollo, a number of Waterman-Loomis and Pioneer lines are among the good resistant alfalfas.

Farmers planning to follow corn with alfalfa would be well advised to apply lime to the corn field the year before they plan to switch to alfalfa. Several advantages will be gained.

First, the lime will have a full year to neutralize soil acid. Not only will the alfalfa seed have a better environment in which to grow but any alfalfa herbicide used will be more effective at the higher pH.

Also, the odds of residual triazine herbicide damage to the young alfalfa stand are reduced.

Going from a triazine to an alternative corn weed control before planting that last season's corn may mean spending a bit more on

chemicals, but it will be much safer for the alfalfa planted the following season.

Corn can be a weed, too. One good way to rid soybeans or other low growing crops of volunteer corn or high growing weeds is with a rope-wick applicator. The rope is saturated with a concentrated solution of herbicide and dragged lightly over the weed plants.

Care must be taken not to touch the rope to the crop. Yocum said he prefers the system to a recirculating sprayer, both for cost and for its numerous possible uses.

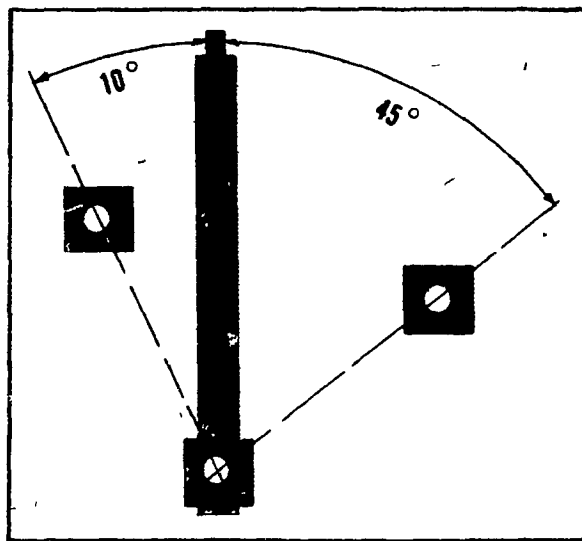
After each use, Yocum recommended a complete cleaning of the sprayer as required by most chemical labels.

That means pulling the screens, especially if a wettable powder or an oil carrier had been used.

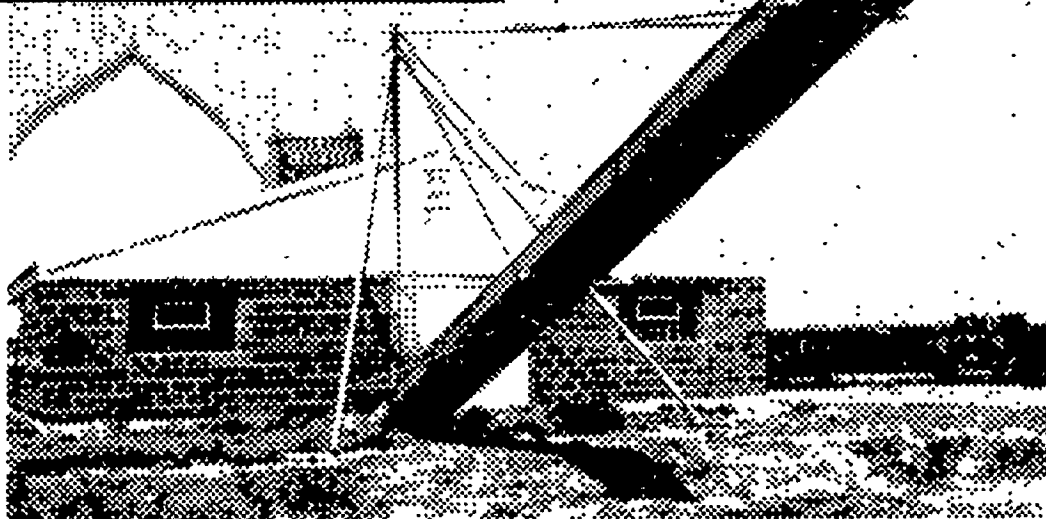
Activated charcoal will clean out a sprayer well if allowed to sit overnight working in a unit and its hoses.

After safely emptying the activated charcoal, a standard flushing with ammonia and detergent will complete the job.—CH

JAMESWAY®



swinging manure stacker



Easy storage

Jamesway 55° swinging stacker lets you store manure 36, 45 or 50 ft. from the barn (3 models). Stacks more than 600 tons for later spreading. Rugged, simple design. Ends daily manure hauling.

See us for systems and service that help make the good life better.

AGRI-EQUIP.

RD4, Farmersville, Ephrata, PA
717-354-4271

DEPENDABLE MOTORS

Honey Brook, PA
215-273-3131
215-273-3737

ROVENDALE SUPPLY

RD 2, Watsonstown, PA 17777
717-538-5521

I. G. SALES

Rt. 113, Box 200
Silverdale, PA
215-257-5135

HENRY S. LAPP

RD1, Cains, Gap, PA 17527
717-442-8134

SOLLENBERGER SILOS

RFD 2, Chambersburg, PA
717-264-9588

G. HIRAM BUCHMAN, INC.

Rte. 519 - N. off Rte. 46
P.O. Box 185
Belvidere, NJ 07823

HARRY L. TROOP

Rt. 1 Cochranville, PA 19330
215-593-6731

J. A. SWOPE

Box 121, RD1
Myerstown, PA
717-933-4758

ERB & HENRY EQUIP., INC.

22-26 Henry Avenue
New Berlinville, PA
215-367-2169

DETWILER SILO REPAIR

Rt. 2, Newville, PA
717-776-7533

AIR COMPRESSOR SALES & SERVICE

CURTIS and

CAMPBELL® HAUSFELD

The Hoover Pump is Not Affiliated With Stauffer's Machine Shop.

ATTENTION DAIRYMEN:

- ★ Zurn Air Drying Equipment For Moisture Free Air
- ★ Air Compressor Units Built To Your Specifications
- ★ We Service Pneumatic Milking Systems

SCHRADER AIR LINE EQUIPMENT

FOR STAUFFER PNEUMATIC WATER SYSTEMS, DESIGN & INSTALLATION, CALL US

STAUFFER'S MACHINE SHOP

RD3, Ephrata, Pa. Phone: (717) 738-1516
¼ Mile South of Rt. 322 on
Pleasant Valley Rd., Ephrata Exit New Rt. 222