

THE OLD FARMER'S ALMANAC

AUG. 4-10, 1980

You can sail, but then there's a gale

Let cucumbers nearest the root remain for source of next year's seeds. New moon Aug 10 (the annular eclipse of the sun on Aug 10 will be visible as a partial eclipse from the southwestern US). Average length of days for the week, 14 hours, 14 minutes. First commercial vessel on Great Lakes Aug 7 1679. Well begun is half done.



Ask the Old Farmer I just bought an old piece of stoneware called a porringer. It has a handle on it, but it is too big to be a cup. What was it used for? YS Cleveland

It's a soup or stew bowl. There was once a happy day when it was permissible for a man to tilt up his soup bowl to get the last spoonful. The handle on the side was for giving it a lift in order to get the last drop.

Home Hints: Scorch spots on linen may often disappear when placed in hot sunlight all day.

OLD FARMER'S WEATHER FORECASTS

New England: Mild, with showers, to start, middle through end of week is clear and hot, showers north.

Greater New York-New Jersey: Showers and warm through mid-week, then sunny and seasonal through weekend.

Middle Atlantic Coastal: Showers south, sunny north at start, then partly cloudy, hot, and few showers by week's end.

Piedmont & Southeast Coastal: Thunderstorms start the week, then partly cloudy, hot, showers north middle through end of week.

(All Rights Reserved Yankee Inc. Dublin N.H. 03444)

Valley Livestock

Valley Stockyards
Athens, Pa.

Monday, July 28

Report supplied by auction

Reported receipts of 104 cows, 18 bulls, 365 calves, 5 heifers, 2 steers, 178 hogs, 8 lambs, 10 sheep. Cattle market reported higher, calf market reported steady.

Holstein Heifer Calves to 175.00; Veal Calves to 97.50; Bobs, 90-110 lbs. 80.00-96.00;

Bobs, 80 and down lbs. 60.00-71.00; Grassers & Feeders 50.00-65.00; Lambs 50.00-62.00; Sheep 21.00-31.00; Hogs, 200-250 lbs. 38.00-43.00; Sows 32.00-38.00; Boars 26.00-30.00; Pigs 8.00-24.00; Heifers 50.00-55.00; Steers no top steers; Steers, feeder 55.00-69.00; Bulls 50.00-59.75; Cows, utility 47.00-49.00, Top 53.00; Cows, fat 43.00-46.00; Cows, medium 44.00-45.50; Cows, poor or small 36.00-41.00; Horses small to 270.00; Ponies to 125.00; Goats 15.00-42.00.

East Coast Carlot

Wednesday, July 30

Report supplied by PDA. Compared to Tuesday's close. Prime special fed veal generally steady in narrow test. Good and Choice boning veal generally steady. Spring lamb compared to last week's bulk, 55 lbs down 2.00 to 3.00 lower, instances 5.00 off from early sales last week. Boneless beef 85 chem lean 1.00 to 2.00 higher than last week, 90 chem firm in limited test.

VEAL CARCASS

HIDE ON

50 Head

Prime (Special Fed) 180-240 lbs. few 160.00, generally steady.

BONING TYPE

Good and Choice

Northeastern Suppliers: 65-75 lbs. 114.00, all limited; 55-64 lbs. 112.00, all steady; 45-54 lbs. 110.00; 35-44 lbs. 108.00; 34 lbs. down 106.00.

Inshipped: 51-60 lbs. 110.00 LTD, generally steady; 41-50 lbs. 110.00 LTD, generally steady.

LAMB CARCASS

Choice & Prime 3-4

1 Load

55-65 lbs. 138.00; 65-75 lbs. 138.00.

SPRING LAMB CARCASS

Choice & Prime 3-4

3 Loads

55 lbs. down 138.00, load late yesterday 140.00; 55-65 lbs. 138.00.

BONELESS BEEF

6 Loads

90 pct chem lean, fresh 136.00-137.00 part loads

85 pct chem lean, fresh 125.00-128.00.
80 pct chem lean, fresh 112.00-113.00.

BEEF TRIMMINGS

4 1/2 Loads

65 pct chem lean, fresh 91.50.

50 pct chem lean, fresh 72.00.

CURED AND PROCESSED MEATS

8 Loads

Skinned Hams: 16-20 lbs. 79.00-80.50 firm.

Semi-boneless Hams. 14-17 lbs. 101.00 firm.

Boneless Hams: 13-17 lbs. 123.00 firm.

No. 1 Sliced Bacon. Vacuum Pack, 1 lb. pkg 102.00 steady.

Franks, 70 Beef, 30 Pork 1 Lb. Pack: 89.00 steady.

CALVES 101 Vealers bulk of supply returned to farm. Few Choice 85.00-95.00; Good 78.00-90.00; few Standard & Good 90-120 lbs. 70.00-80.00, few 70-90 lbs. 61.00-70.00; few Utility 55-125 lbs 51.00-65.00.

FARM CALVES. Hol. Bulls 85-125 lbs. 80.00-112.00; Hol. Heifers 80-125 lbs. 90.00-132.50 Beef Cross bulls & heifers 80-110 lbs. 80.00-95.00.

HOGS 107. Barrows and gilts 1.75-2.75 higher, instances 4.50 higher US No 1-2 200-245 lbs. 45.50-48.50, No. 1-3 200-265 lbs. 44.00-46.75, few No. 2-3 260-295 lbs. 37.00-40.75; few No 1-3 130-170 lbs. 31.00-38.00; Sows US No 1-3 350-550 lbs 37.75-42.00 Boars 15.00-31.25.

FEEDER PIGS 36. 1 lot US No 1-3 30 lbs. 12.00 per head; No. 1-3 60-90 lbs. 17.00-20.50.

SHEEP 1. Sl. ewes 21.00.

Grade No. 1, 1020-2000 lbs. 51.25-59.75.

CALVES: 541. Vealers grading Choice \$4-7 higher, Standard & Good about steady, few Prime 90.00-94.00, Choice 81.00-91.00, Good 70.00-82.00; Standard & Good 70-95 lbs. 62.00-74.00, 50-110 lbs 45.00-59.00.

FARM CALVES Hol Bulls 85-130 lbs. 80.00-109.00, few down to 72.00; ; Hol Heifers 90-220 lbs. 100.00-210.00, mostly 165.00-195.00

HOGS: 103. Barrows and gilts \$1.25 higher. US No. 1-2 200-230 lbs 45.50-47.10, No. 1-3 200-240 lbs. 43.85-44.00 Sows US No. 1-3 275-550 lbs 37.00-41.25. Boars 27.50-31.75

FEEDER PIGS 76. US No 1-3 20-35 lbs. 7.50-10.00 per head, No 1-3 40-50 lbs. 12.50-18.00.

SHEEP: 51. Spring sl. lambs Choice 80-105 lbs 57.50-61.75; Good 60-85 lbs. 52.50-56.50; Sl. ewes 21.00-25.00.

Indiana Auction

Thursday, July 31

Report supplied by PDA

CATTLE: 78. Compared with last Thursday's market: Sl. cows weak \$1-2 lower. Sl. steers Individual Choice 64.00 and 65.00; Individual Good 62.25 and 62.75. Sl. heifers Individual Good 59.00; Sl. cows Utility & Commercial 44.50-48.50; Cutters 42.50-46.00; Canner & L Cutter 38.00-43.00; Shells down to 30.00 Sl. bulls few Yield Grade No. 1 & 2 1000-1700 lbs. 52.25-63.00

FEEDER CATTLE. Steers, Large Frame No. 1 350-750 lbs. 60.50-65.00. Bulls Medium & Large Frame No 1, 400-600 lbs 51.00-63.00

Chambersburg Auction

Thursday, July 31

Report supplied by PDA

CATTLE: 312 Compared to last Thursday's market, slaughter steers steady to 50 cents higher. Sl. cows 25 cents-1.25 lower. Sl. steers High Choice & Prime 70.60-71.86, Choice 975-1250 lbs. 67.85-70.50, Good 58.85-67.00; few Standard 57.25-59.25; Sl. heifers few Good 56.00-61.85; Sl. cows Utility & Commercial 46.00-52.35, Cutters 44.25-48.50; Shells down to 41.25; Sl. bulls yield

Lancaster Feeder Cattle

Friday, July 25

Report supplied by USDA

Feeder Cattle

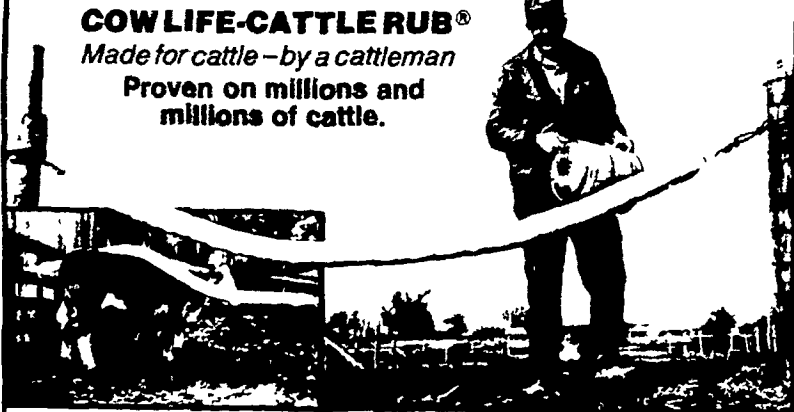
Today 285
Last Friday 188
Last Year 150

TREND Insufficient volume to fully test trends. Few lots mostly steady.

FEEDER STEERS MEDIUM FRAME 1: Couple lots 600-650 lbs 77.50-77.75, couple lots 750-800 lbs. 69.10-70.50, few lots 900-1035 lbs 63.25-65.00

Easy, Effective, Economical Fly Control... Even Face Flies!

COW LIFE-CATTLE RUB®
Made for cattle—by a cattleman
Proven on millions and millions of cattle.



The RUB has completely solved our fly problems for the last several years! We run about 800 registered and commercial mother cows. Hubby Griner, Columbia, Mississippi.



(Shown with Face Flies.)

Easier-to-use—Simply hang the 10 foot RUB, pour on about four gallons of insecticide solution and let the RUB do the rest. It's that easy! And many users report treating the Cow Life Cattle RUB less than once a month.

More Effective—Just one pass under the rub gives animals the insecticide protection they need. It really takes the work out of fly and lice control. Millions of cattle have proven how simple it is.

More Economical—it costs less to start with and it's made of DuPont Orlon and acrylic so it's virtually rot proof! Plus it saves labor, insecticide and an awful lot of trouble.

And if face flies are a problem to you—The FACE FLYPS offer effective face fly control. These special DuPont Orlon "FLYPS" wick insecticide solution directly from the RUB and insure that the insecticide is where it is needed for effective face fly control on the animal's face. Each pack contains 22 FLYPS which require about 3 minutes to attach to the RUB. Order one pack per RUB.

524-120 Rub \$ 9.55
5 or more \$ 9.25
F.O.B. (Ship Wgt 11 lb)
524-130 Flyps Ctn/22 \$ 6.95

U.S. Patent #3677233

CALL...

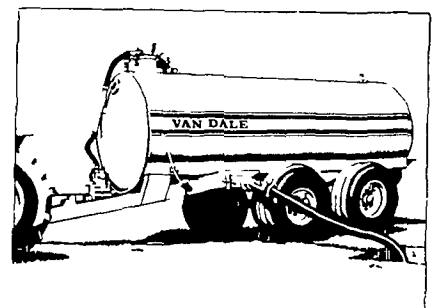
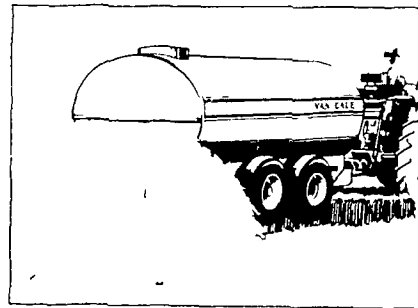
pbs livestock drugs

P.O. Box 9101 Canton, Ohio 44711

TOLL FREE

800-321-0235 ASK FOR OUR FREE CATALOG!

Profitable waste management with VAN DALE



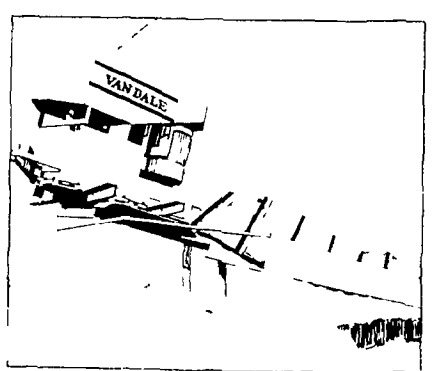
Manure is money! Don't throw dollars away. Let Van Dale show you the way to modern, proven manure management.

Slinger Spreader Tanks for beef and dairy liquid manure in 1500, 2250, 3000 gallon models. Low rear spread pattern with up to 40' swath. No messy blowback.

Vacuum Spreader Tanks for hog liquid manure in 1500, 2250, 3000 gallon models.

Separate intake and discharge ports for quick fill-hose hookup.

Barn Cleaners to help you handle more livestock with less labor, improve farm efficiency, increase profits.



Complete product line.

Transfer Pumps, Agitator/Filler Pumps, Above Ground Storage Tanks, Soil Injectors. One supply source for your entire waste management system.

VAN DALE®

SEE US AT AG PROGRESS DAYS AUG. 19 - 21

K & S INC.

VAN DALE SALES AND SERVICE

RD 1, QUARRYVILLE, PA 17566

PHONE: 717-284-3111