

# WHAT YOU NEED IS A KRAUSE ROCKFLEX DISC

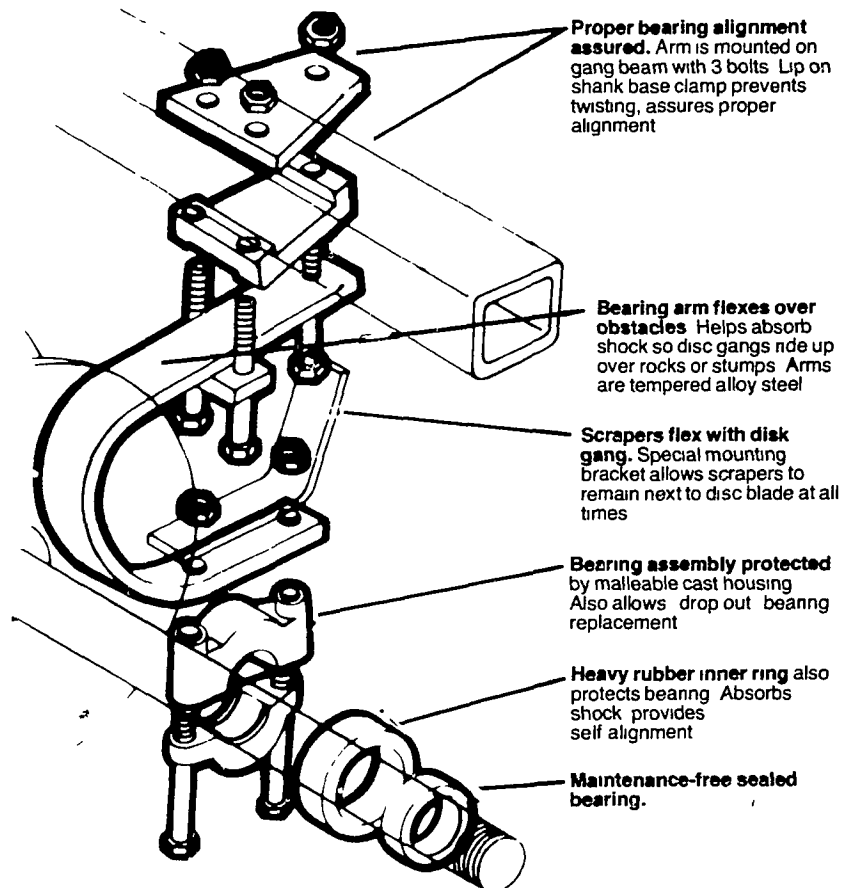
## WHY?

BECAUSE OF KRAUSE SUPERIOR  
"ROCK-FLEX" BEARING ARM

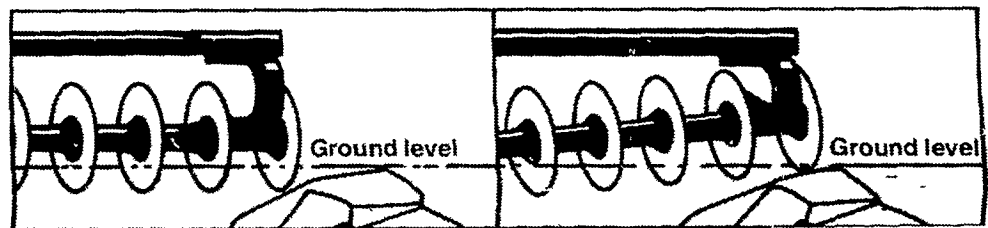
AND HERE'S WHY IT  
MEANS GOOD NEWS  
FOR YOU!

Unique C-shaped bearing arm:

- Flexes over obstacles
- Protects disc blades from breakage
- Protects tie rods from bending
- Protects spools from breakage
- Absorbs shock — minimizes bearing wear
- Improves trash clearance



A Krause innovation! The "Rock-Flex" bearing arm was invented by Krause in 1965.



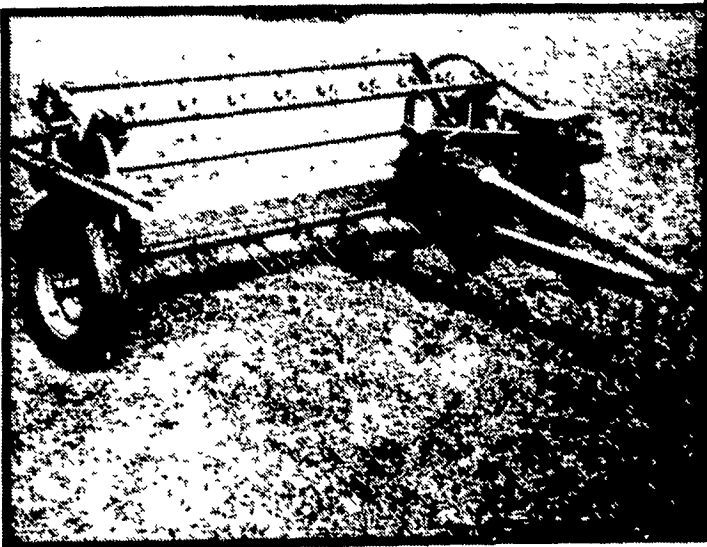
Normal working depth.

As disc encounters rock, C-arm compresses, allowing gang to ride up over obstacle.

## SUMMER CLEARANCE — WHILE THEY LAST

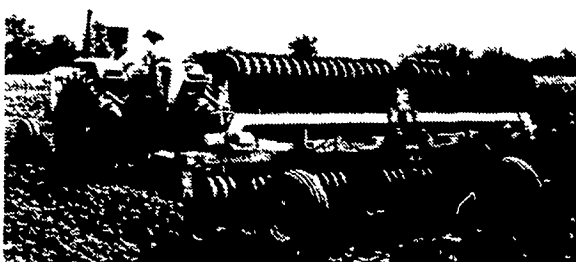
### GRIMM HAY TEDDERS

PTO ..... \$1225  
GROUND DRIVEN ..... \$1125



## 20% OFF

**DUNHAM LEHR**  
SERIES 42 WING CULTIPACKERS



- Wings fold flat and tongue telescopes for transport
- Tongue folds up for storage
- Sizes in stock - 20'7", 24'9", 27'7", 31'9"
- 19" smooth or 20" Crowfoot Rollers



### FLEX WING CUTTERS HEADQUARTERS

515' FLEX CUTTERS ..... \$5450  
Heavy Duty  
FLEX SINGLE WING 10' ..... \$4500



Mows big acreage . . . of grass . . . crop residue fast. Rhino Ruggedness keeps operating cost low!  
Cutters in stock: 6', 8', 10', 15' & 20'

### RECONDITIONED COMBINES IN STOCK

IH 1973 - 815D Hydro, A C  
IH - 80 Pull-type w/7' Platform  
Deere - 95 Gas w/3 Row Cornhead  
AC - Gleaner GKS, 1973

Deere - 7700D Hydro, 24 5x32 Tires,  
A C, 643 Cornhead, 16' Platform  
Deere 4400 Hydro, A C, 444 Cornhead  
& 213 Flex Platform

Deere 45D w/2-row Cornhead, 10 ft  
Platform  
MF 300  
MF - 510D, 1975

Waiver of Finance Til 3/1/81

### USED FORAGE HARVESTERS

IH 650 Recutters  
JD 38 w/2 row Cornhead &  
Grasshead

IH 650, direct throw  
NH Super 17  
NH 17

### USED NH 320 Baler

Like New ..... \$4500  
New IH 435 Baler

ALL NEW & USED  
PRODUCTS BACKED BY  
**HOOPER PARTS  
& SERVICE**

RADIO CONTROLLED TRUCKS FOR BETTER SERVICE  
**C. B. HOOPER & SON INC.**  
INTERCOURSE, PA (717) 768-8231 AUTHORIZED UPS STATION

