

PUBLIC SALE

SATURDAY, AUGUST 9th
10:30 A.M.

Located 2½ miles south of New Holland, Brimmer Ave., south from Route 23, along the New Holland Road, on the Jacob E. Beiler farm, Lancaster County, Penna.

SHOP EQUIPMENT

Farmall "Cub" power unit with clutch and starter; 7" turning lathe and grinder; Delta 6" joiner; Combination band saw and table saw; Craftsman 12" plane; Walker-Turner shaper, Lawson heads with engine; Mortise machine; Mortise drill; Engine and generator; Briggs 7 h.p. engine; Winch; shafts, pulleys and V belts; Mitre box with saw; table saw.

Pipe threader ¼" to 1"; skill saw; tap and die set; 5-ton Hyd. jack; large screw jack; anvil; bolt cutter; two 4' levels; 6' straight edge; assortment of "C" clamps; large star drill; planes; vise; saw vise; blow torch; large and small tin shears; stove pipe crimper; sledge hammers; claw hammers; hatchets; hand saws; digging iron; pruning shears; grease guns; hoes; shovels; Masonry tools; mud box; wooden scaffolding frames; trussels; stockade; can't hook; tamper; cross cut saws; 50' and 100' tapes; two scythes;

Old wrenches; chisels; ax; large and small adzs; augers; bolts; tacks; screws; nails; drawer pulls; thread holder; small cast iron kerosene burner; wood handled monkey wrenches;

Copper kettle; large ladle; meat saw; butcher knives; Mantle clock; books; buggy lantern; six cane seated chairs; Plymouth double barrel shotgun; "22" rifle; four burner kerosene stove; fishing lines; round table with three boards; treadle sewing machine;

New wood candle holders; new cutting boards; new spice racks; new doll cradles; assortment of cherry, walnut, and oak dry lumber;

Step and extension ladders; tobacco ladders with shelvings; wooden wheel dump rake; 2-hole corn sheller; treadle grindstone; hoke plow; bob sled; fibre glass shafts; used tin roofing; 1000 gallon fuel oil drum; drums; woven wire fence stretcher; harness; hames; canvass; window sash;

Many antiques tools and items to be sold.

Inspection day before sale only.

Sale at 10:30 A.M.

Owner
JESSE B. RIEHL

Diffenbach's Auctioneers
Refreshments Available

Public Sales Register

Closing Date - Monday, 5:00 P.M.
of each week's publication

SAT. AUG 9 - 10:30 A.M. Public Sale of Shop Equipment Located 2½ miles south of New Holland, Brimmer Ave., South from Rt. 23, along the New Holland Rd., on the Jacob E. Beiler Farm, Lancaster Co., PA Jesse B Riehl, Abe Diffenbach Auctioneer.

SAT., AUG 9 - 10:30 A.M. Public Sale of Household, Antiques, Collectibles, Tools. Mr & Mrs Stafford Randall Owners Located Rt. 87, 1½ miles SW of Dushore, PA, or 9½ miles NE of Forksville, PA, Warren Fiestier Auctioneer.

THURS. & FRI. AUG. 14-15 Horst's Machinery Sale at Marion, PA, Ralph W Horst Sale Manager.

THURS & FRI., AUG. 14 - 15 Public Sale of Farm Equipment. Located 6 miles south of Chambersburg, PA 1 mile east of Marion, just east of Rt. 81 at Marion Exit 4 Rt. 914. Ralph Horst Manager

FRI. AUG 15 - 6:30 P.M. Consignment of Feeder Cattle & Feeder Pigs at Keister's Middleburg Auction Sales, Inc. Rt 522, 3 miles East of Middleburg, 5 miles West of Selin grove, Pa. Don & Walt Keister, Owners, Larry Long & Dave Imes Auctioneers.

FRI AUG. 15 - 10:30 A.M. Public Sale of 175 Holsteins, Located on the farm, 1 mile north of Kearneysville, WV on Rt. 480, approx. 7 miles northwest of Charlestown in Berkeley Co., WV. H.C. Benner Owner. Sale Manager Remsburg Sale Service.

SAT. AUG. 16 - 9:30 A.M. Sale of Full Line of Woodworking Machinery & Antique Tools. Located 1 mile East of Farmersville, Pa. on Farmersville Rd. Terms by Enos S Weaver. Auctioneers - LeRoy S & Paul W. Horst

WED AUG. 16 - 9 A.M. Consignment Sale by David H Good Located ½ mile North of Route 23 on North Maple Ave in Leola, Lancaster Co., Pa. Watch for sale signs F Snyder, R Martin, C Wolgemuth J. Fry and L Horst, Auctioneer

SAT AUG 16 - 9:00 A.M. 2nd Annual Public Consignment Sale. Held by the Kutztown Community Fire Co., in the Village of (Little Kutztown), located about 1½ mile north of Myerstown on Rt 645. Donations and Consignments welcomed, by July 26. 717-866-5532, 933-4225 or 866-2702.

SAT AUG. 16 - 5th Annual Sale for the Bareville Fire Co. 211 E. Main St., Leola, PA Selling dishes, tools, furniture, quilts, groceries, dry goods, local auctioneers.

SAT. AUG. 16 - 6:30 P.M. Danville Livestock Market, horse sale Located Old Route 11, Danville, PA Melvin M. Lehman, owner.

SAT. AUG. 16 - 9:00 A.M. Public Sale of Antiques, Farm Equipment and Personal Property, Located 5 miles north of York, PA along old 111 (or Susquehanna Trail) on left. Estate of Charles Reynolds Auctioneer Blaine N. Rentzel

TUES. AUG 16 - 6:00 P.M. Wood Working Tools Public Sale. Located - travel Rt. 272 North, turn left onto Schoeneck Rd to Village of Schoeneck, turn right to fire company, turn left onto Swamp Bridge Rd., approx 1 mile to sale on left. Terms by Margaret P. Weller, Randal V. Kline and Lloyd H. Kreider Auctioneers.

SAT. AUG. 16 - 9:00 A.M. Public Sale of Household Goods and Antiques. Located 4 miles south of Quarryville, along Rt. 222 in town of Mechanic Grove, PA. Aaron & Mary Weaver Owners Everett Kreider and Steve Petersheim Auctioneers.

SAT. AUG. 16 - 10:00 A.M. Public Sale of Kitchen Equipment, Desks, Chairs, Located in boro of Schwenksville, 2 blocks west of Rt 29 on Perkiomen Ave in the Landes School and old Schwenksville High School Sale by Perkiomen Valley School District Hess & Moyer Auctioneers

SAT., AUG 16 - 9:00 A.M. Public Sale of Household Furnishings, Antiques, Tools. Located along Rt. 897, 1½ miles east of Lebanon, S Lebanon Twp., Lebanon Co., PA Conditions by Howard & Martha Patches Earl S. Buffenmeyer Auctioneer.

SAT., AUG. 16 - 9:00 A.M. Public Sale of Antiques, Collectors Items, Furniture, Wagons, Harness, Coins, Arrowheads. For Mr & Mrs William H. Moyer, Jr. on Quarry Rd., ½ mile west of Rt 313, Dublin, PA Henry K Freed & Sons Auctioneers

MON. AUG. 18 - 9:30 A.M. Consignment Sale Located at S Race St., Myerstown, PA 17067 Sale held by Wengers Farm Machinery, Inc

SAT. AUG. 18 - 10:00 A.M. Public Sale of Antiques and Collectibles Located at Lykens Valley "Shop and Play Hall" on Rt. 209, Lykens, PA. Lee D Dockey Auctioneer

SAT. AUG 18 - 9:00 A.M. 12th Annual Community Sale at the Leesport Auction Grounds, Rt. 61 N. of Reading, Farm Equipment, Household Goods and Antiques, Sponsored by Berks Co. Pomona Grange. 7 Auctioneers

WED. AUG. 20 - Test Station Boar Sale. Sale by PA State University.

WED. AUG. 20 - 6:00 P.M. PA's 2nd Performance Tested Boar Sale Held at Meat Animal Evaluation Center, 651 Fox Hollow Rd., State College, PA. Sponsored by PA Dept of Agriculture in cooperation with Penn State University and PA Pork Producers Council

WED AUG 20-10:00 A.M. Truck Tractors, Alum Dump Trailers, 4x4, Pickups, & Shop Equipment Auction To be held at Taylor's yard and shop facility on Rt. 40, 1 mile west of intersection Rts 896 & 40 at Glasgow, DE, Vilsmeier Auction Co., Inc

AUG 21-22-23 Martin's Annual August Carriage, Sleigh and Antique Auction, Held at Martin's Sales Pavilion, Inter-course, PA Sale conducted by Martin Auctioneers Inc.

THURS. AUG 21 - 1:00 P.M. Public Sale of Valuable Real Estate, Located 2½ miles off Rt 80 at Exit 24, 2 miles north on Rt 26 to farm, 17 miles north of State College near Bellefonte, PA, Centre Co., PA. Benjamin B & Malinda Stoltzfus, Owners J Everett Kreider and Steve Petersheim Auctioneers.

THURS, AUG 21 - 6:30 P.M. Public Sale of 52 acre Gentleman Farm, Ivan R Lehr Estate, 5 miles west of Dover and take the road leading to Admire and go 2 miles beyond to Shadydel Rd or midway between York and East Berlin on US Rt 234, thence turning north 1½ mile at Bresecker Rd. to Village of Admire and turn west 2 miles to Shadydel Rd. then turn north .10 mile. Clair R Slaybaugh Auctioneer

PUBLIC SALE

OF VALUABLE
REAL ESTATE

2½ mile off Route 80 at Exit 24. 2 mile north on Route 26 to farm. 17 mile north of State College near Bellefonte, Big Nittany Valley, Centre County, PA.

THURSDAY, AUGUST 21

1:00 P.M.

106 acres more or less, with Hagerstown soil, erected thereon a 7 room frame house w/bath downstairs and newly built 20x20 family room all covered with aluminum siding. 42x72 bank barn w/new addition w/39 tie stalls & 500 gal. Girton milk tank w/compressor (4 yrs. old). Box stalls for 12 horses and additional room for 20 heifers. 2 stave silos 16x50 (4 yrs. old) and 12x40. Diesel house and 3 other outside buildings. 1200 bu. metal corn crib. New roof on house and a never failing well.

Farm is contoured w/new diversion ditch w/tile outlet drain.

App. 95 acres tillable, fruit trees for the family. School bus goes by the house.

Terms by
BENJAMIN B. & MALINDA STOLTZFUS

Inspection July 26 and Aug. 9 or by appointment.
Terms: 10% down. Bal. in 90 days.

Auctioneers-
J. Everett Kreider
Steve Petersheim
Phone 717-786-1545
Atty. Dennis Reiter

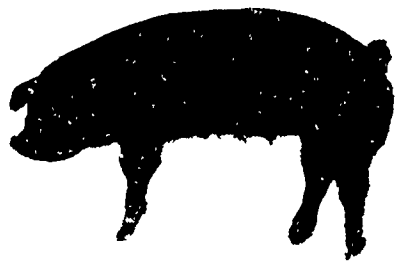
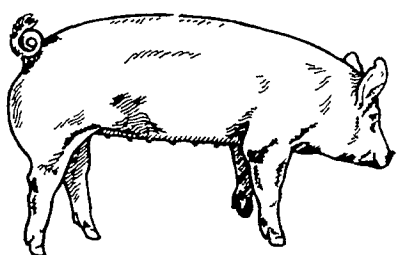
Lawrence, Leon and Thomas Arnold
15th PRODUCTION

SALE

Yorkshires

OF

Durocs



AUCTIONEER, Harry Bachman, Annville, Pa.

50 BRED GILTS
(All gilts are hand mated)

Registered Yorkshire-Registered Duroc-Commercial
PICK DUE DATES TO FIT YOUR FARROWING SCHEDULE
40 BOARS

25 Yorkshire - 15 Duroc

Seven to eight months old, ready for heavy service.

60 OPEN GILTS (Ready to breed)

10 Registered Yorkshire - 10 Registered Duroc

30 Registered Yorkshire to be sold as commercials

10 Crossbred.

All animals vaccinated for Erysipelas & Lepto. Negative tested for Brucellosis & Pseudorabies

Friday Evening

August 22, 1980, 6:30 P.M.

SALE TO BE HELD AT THE

Lebanon Area Fairgrounds

(CORNWALL & EVERGREEN ROADS 1½ MILES SOUTH OF)

Lebanon, PA

FOR CATALOGUE WRITE TO
LEON L. ARNOLD R.D. 7, BOX 705, LEBANON, PA 17042
OR CALL 717-273-5880

PUBLIC SALE

Lovely 52 Acre Gentleman Farm

Ivan R. Lehr Estate

THURSDAY, AUGUST 21st, 1980

Time 6:30 P.M.

To be held at the site of the farm located 5 miles West of Dover and take the road leading to Admire and go 2 miles beyond to Shadydel Road or midway between York and East Berlin on U.S. Route 234 thence turning North 1½ mile at Biesecker Road to Village of Admire and turn West 2 mile to Shadydel Road then turn North 1/10 mile the following. Sale sign posted.

REAL ESTATE

Farm containing 52 acres more or less, less improvements lying and being partly in Dover Township and partly in Paradise Township, York County, Pennsylvania. Situated at the aforementioned location, fronting on the improved Shadydel Road on the west side 1,584 feet and on the east side 1,056 feet, measurements are approximate. Improved with a 2½ story brick and stone 7 room and two full baths and attached 1½ story brick addition, first floor consists of a spacious eat in kitchen with large kitchen unit with built in dishwasher and ceramic tiled walls, living room and dining room both with natural oak peged floor, office room, full bath, open stairway, two porches one enclosed, second floor with 4 bedrooms, full bath, balcony, storage attic, two compartment basement cement floor, out side entrance, home has wall panel and composition ceiling block throughout less eat in kitchen, radiator steam heat, oil fire furnace, 1000 fuel oil tank, aluminum storm windows and doors, window shutters, adjacent frame and weatherboarded summer kitchen, 3 car frame and cement block garage 22'x32' cement floor, two wells of water, cistern, the entire farm good and clean high productive ground, a lovely setting farm with a nice 3 A. landscaped lawn with many nice growing pine trees. If looking for a nice gentleman farm try and plan to attend sale.

For Inspection Telephone: 717-225-4293 for appointment.

TERMS: Real estate 15% when stricken down, Balance in 60 days with possession Other terms and condition to be announced day of sale.

DONALD L. REIHART

Executor

Clair R. Slaybaugh, Auctioneer
Phone 677-7479