

Livestock market and auction news

Pa. Auction Summary

Friday, August 1

Report supplied by PDA
CATTLE 7407 Compared with 7030 head last week, and 7353 head a year ago Slaughter steers and heifers steady to 1.00 higher. SI cows & bulls 1.00-2.00 higher. SI steers High Choice & Prime No. 3-4 70.00-74.00; Choice No. 2-4 68.00-74.00; Good 59.00-67.00; Standard 55.00-60.00; SI heifers Choice 61.00-66.00; Good 56.00-62.00; Standard 53.00-58.00. SI cows Utility & Commercial 45.00-54.25; Cutters 44.00-51.75; Canner & L. Cutter 40.00-45.50; Shells down to 30.00. SI bullocks Choice 59.00-63.00; Good 58.00-61.00; Standard 52.00-59.00. SI bulls Yield Grade No. 1 1000-2200 lbs. 55.00-63.00; Yield Grade No. 2, 1000-1600 lbs 52.75-57.50.

FEEDER CATTLE Steers Medium & Large Frame No. 1 300-750 lbs 58.00-75.00; Large Frame No. 2, 400-650 lbs. 55.00-63.00. Heifers, Medium & Large Frame No. 1, 400-750 lbs. 55.00-65.00.

CALVES 4051 Compared with 3958 head last week and 3673 head a year ago Vealers unevenly steady Prime 95.00-108.00; Choice 85.00-96.00; Good 75.00-85.00; Standard & Good 90-120 lbs. 70.00-80.00; 65-90 lbs 65.00-75.00; Utility 50-110 lbs 50.00-65.00.

FARM CALVES active Hol Bulls 80-125 lbs 80.00-121.00; Hol Heifers 75.00-200 lbs 80.00-210.00, mostly 110.00-175.00. Beef cross bulls and heifers 80-125 lbs 80.00-114.00.

HOGS 7356 Compared with 7307 head last week and 7265 head a year ago Barrows and gilts 50-2.00 higher US No 1-2 200-240 lbs 45.00-47.50; No 1-3 200-250 lbs 44.00-45.50; No 2-3 190-270 lbs 41.00-44.00; No 1-3 140-190 lbs 33.00-39.00. Sows mostly steady US No 1-3 300-575 lbs 34.00-42.00, No 2-3 300-650 lbs 28.00-35.00 Boars 28.00-34.00.

FEEDER PIGS 2029 Compared with 1928 head last week 1629 a year ago Uneven US No 1-3 20-35 lbs 9.00-17.00 per head, No 1-3 35-50 lbs 14.00-24.00; No 1-3 50-80 lbs 23.00-30.00.

GRADED FEEDER PIGS 1436 Compared with 3299 head last week, and 2227

head a year ago All sales by CWT. Feeder Pigs 6 00-10 00 higher, spots to 17.00 higher Few US No 1-2 25-40 lbs 67.00-76.00 40-50 lbs 65.00-76.00, 50-60 lbs 52.00-68.00, 60-70 lbs 48.00-50.00; US No 2-3 25-40 lbs 47.00-63.00, few 78.00; 40-50 lbs 47.00-73.00, 50-60 lbs 51.00-58.00.

SHEEP 757 Compared with 700 head last week and 551 head a year ago Spring/Wooled sl lambs steady to 1.00 higher, Choice 70-110 lbs 59.00-67.00, few 77.00; Good 50-100 lbs. 50.00-60.00; SI ewes 15.00-29.00.

Omaha Cattle

Thursday, July 31

Report supplied by USDA
WEEKLY 51 CATTLE Midweek prices on Slaughter Steers were 1.00-1.50 higher, instances 2.00 higher Heifers closed mostly 1.00 higher. Cows were 2.50-4.00 lower late and bulls 1.00-2.00 higher Two-way Feeder Steers were 1.00-2.00 higher Four day receipts this week were 11,800; last week 12,000; a year ago 12,400.

Trading on Slaughter Steers and Heifers was fairly active most days with a rather aggressive demand sparked by a firm tone in carcass trading Best steer demand still centered on the available supply Choice and Prime 1125-1300 lbs, but Choice Yearling type 1025-1100 lbs new crop Steers also found better inquiry than the previous week; Feeder buyers competed aggressively for Good and Choice 975-1075 lbs Steers suitable for a short turn in the feedlot. Best Heifer demand was concentrated on Choice 925-1050 lbs. The overall finish of the Steer and Heifer supply was not particularly attractive with the seasonal increase of Good and Choice new crop Steers and Heifers Steers made up approximately 40 pct and Heifers 31 pct Cows comprised 15 pct and Feeders 10 pct.

STEERS Load Choice with end Prime predominately 3 1184 lbs 75.25, several loads and part loads Choice 3 and Choice and Prime 3-4 1150-1275 lbs 74.75-75.00 Choice 2-4 1150-1300 lbs 73.50-74.50, Choice 2-3 1025-1150 lbs 72.50-74.00 Mixed Good and Choice 2-3 1000-1250 lbs 71.00-72.50 Good 2-3 66.50-

69.50 Choice 2-3 1250-1400 lb Holsteins 64.25-66.00 Good and Choice 2-3 1150-1487 lbs 61.50-64.00.

The average of LS 214 detailed quotations for Choice 900-1100 lbs Steers this week 72.55, Choice 1100-1300 lbs 73.60 Average cost Slaughter Steers this week 72.14 average weight 1134 lbs as compared 69.99 and 1137 lbs a week ago Average cost Heifers 67.06, average weight 967 lbs as compared 65.91 and 967 lbs a week ago.

HEIFERS Part load Choice 3 947 lbs 70.00, several loads Choice and Prime 3-4 968-1022 lbs 69.00-69.25. Choice 2-4 875-1050 lbs 67.00-69.00 Mixed Good and Choice 2-3 850-1050 lbs. 65.50-67.25 Good 2-3 63.00-65.50.

COWS Utility and Commercial 2-4 42.00-44.50, Load Good and Choice 3-4 grain fed cows 46.00, load Heiferettes 52.00 Cutter 40.00-42.00. Canner and low-cutter 37.00-41.00.

BULLS 1-2 1200-2100 lbs 52.00-56.00, few individual 1 57.00-60.00.

FEEDERS Moderate volume medium frame, some large frame 1, 947-1050 lb Steers 71.25-72.50, two loads 1096 lbs 73.00.

Oklahoma Cattle

Thursday, July 31

Report supplied by USDA
CATTLE AND CALVES 9500, Last week: 8348

CATTLE AUCTION Trade fairly active. Feeder Steers over 500 lbs 1.00-3.00 lower, steers under 500 lb. and Heifers steady Supply largely medium frame 1 500-800 lb. Feeder Steers and 400-650 lb. Heifers Good buyer attendance.

FEEDER STEERS Medium Frame 1- Few 350-400 lb 81.00-83.50; 400-500 lb 78.25-82.25; lot 435 lb.

reputation 85.00, 500-600 lb 74.50-77.50; 600-800 lb 70.75-73.75; few 615-635 lb 77.75-79.00; load 710 lb 74.50; 800-900 lb 68.50-70.50, part load 820 lb 71.00 Medium Frame 1-2; 400-500 lb. 73.00-76.25; 500-600 lb.

72.00-74.25, 600-700 lb 69.75-72.00; 700-800 lb 67.00-71.75 Large Frame 1 700-800 lb 69.50-72.00; 800-825 lb 67.50-67.75 Large Frame 2 Holsteins: Lot 495 lb. 65.00; 600-630 lb 59.25-60.50; 750-875 lb. 56.00-57.25 large Frame 1-2; Package 670 lb 69.50; 700-750 lb. 65.25-67.25; few 800-810 lb. 65.25-65.50 large Frame 2: Lot 465 lb. 76.25, lot 715 lb. 67.50.

FEEDER HEIFERS Medium Frame 1 400-500 lb 66.00-70.25; part load 435 lb reputation 72.00; 500-600 lb 66.25-68.50; package 580 lb 69.50; 600-650 lb. 66.50-67.50 Medium Frame 1-2: 475-600 lb. 63.50-66.50; 2 lots thin 490-530 lb 67.75-68.25; 600-700 lb 60.25-63.00; lot 680 lb 65.00 Medium Frame 2. Lot 290 lb 65.00; 400-425 lb 61.75-62.75; lot 550 lb. 64.75; 2 lots 635-645 lb 57.00-59.25.

FOR THE WEEK: Feeder Steers over 500 lb. mostly 1.00-2.00 lower, Steers under 500 lb. 1.00-2.00 higher Feeder Heifers steady to 1.00 higher Slaughter Cows 1.00-2.00 higher, late sales included Utility and Commercial 2-3 42.25-44.75, Cutter 1-2 40.00-44.00 Slaughter Bulls closed the week 3.00-6.00 higher, mostly 3.00-4.00 up. YG 1-2 1250-1800 lb 52.00-58.00, YG 1 lot high-dressing 60.00. Salable receipts this week near 27,800 head compared with 20,231 head last week and 24,467 head the same period one year ago Feeder Cattle and Calves comprised 92% of the receipts Cows and Bulls 8%.

New Holland Dairy

New Holland, Pa.
 Wednesday, July 30

Report supplied by auction
 Reported receipts of 107 cows and 58 heifers and 3 bulls.

Load of Pa. fresh cows, 1000.00-1310.00 Load of Wisconsin fresh cows, 1270.00-1500.00. Load of Conn. 2 fresh cows, 1250.00-1600.00, springers 1275.00-

1525.00 3 Loads Pa. fresh cows, 875.00-1600.00. Fresh 975.00-1375.00, springers 1250.00-1600.00. Fresh 1325.00-1370.00. 1 Load New York Grade and Purebred cows, Fresh 1000.00-1375.00, springers 1430.00-1800.00 1 Load of New York Spr ingers, 1050.00-129.00 Local Grade Springing Heifers 850.00-1200.00; Purebreds 1300.00-1425.00; Bulls 590.00-610.00; Local Cows 630.00-1625.00.

SILAGE AND FEED CARTS



34" Wide, 62" Long,
 53" high, capacity (to feed
 35 to 40 Cows)
 16" Ball Bearing wheels
 For very easy handling

28" wide, 60" long,
 35" high, capacity 600 lbs
 Choice of 10" pneumatic
 or semi-pneumatic wheels

Many Other Sizes Available

We Also Manufacture Swivel Casters for
 16", 12" and 10" wheels
MANUFACTURED AND DISTRIBUTED BY
SCENIC ROAD FARM SUPPLY

3539 Scenic Road
 Gordonville, Pa 17529
 2 1/2 Mi Southwest of New Holland,
 1 1/2 Mi N of Intercourse

— AUTHORIZED DEALERS —

AARON S. GROFF & SON
 RD #3, Ephrata, PA 17522
 Phone (717) 354-4631

IRVIN J. PEACHEY
 Star Route, Box 35
 Belleville, Pa. 17004
 Phone (717) 483-6714

ATLEE F. REBERT
 RD 2 Littlestown, PA 17057
 Phone (717) 359-5863

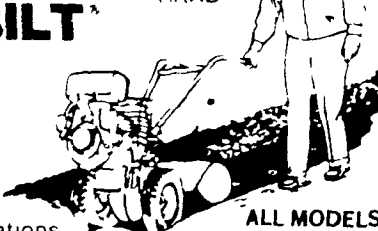
LAPP SHARPENING SERVICE
 Gible Road,
 Route 2, Box 276
 Myerstown, Pa 17067

— DELIVERIES AVAILABLE —

Yes, we have
 the famous
TROY-BILT
ROTO
TILLER

- Free Demonstrations
- Trade ins welcome
- Financing Arranged

JUST ONE
 HAND!

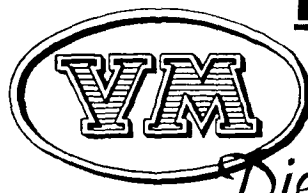


ALL MODELS
 IN STOCK
 • Factory Authorized
 Sales & Service

**BIGGEST DISCOUNT OF THE
 YEAR NOW IN EFFECT**
 Authorized Troy-Bilt Dealer

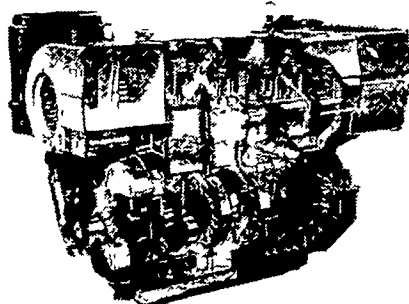
Hollinger's
 717-738-1131 FARM MARKET
 1755 WEST MAIN ST
 1 mi. west of Ephrata on Rt. 322

REPOWER With VM DIESEL



Harvesters, Haybines,
 Tractors, Cornpickers,
 Balers, Hydraulic
 Systems, Corn Binders,
 Choppers

All New HR SERIES - Air Cooled - Oil Cooled - Water Cooled



OIL COOLED

Call Us
 About Our

**CASH
 REBATES**
**ON DAN and V-SERIES
 ENGINES**

USED DIESELS

- SR 2 Lister
- SR 3 Lister
- HRS 6 Lister
- 1 Cylinder Deutz
- DVA 2200 Sianzi

SPECIAL:
VM 1306 V SERIES

QUEEN ROAD REFRIGERATION

Box 67, Intercourse, PA 17534
 Phone: John D. Weaver - 717-768-9006 or
 768-7111 or
 Answering Service - 717-354-4374

**24 HOUR
 SERVICE**