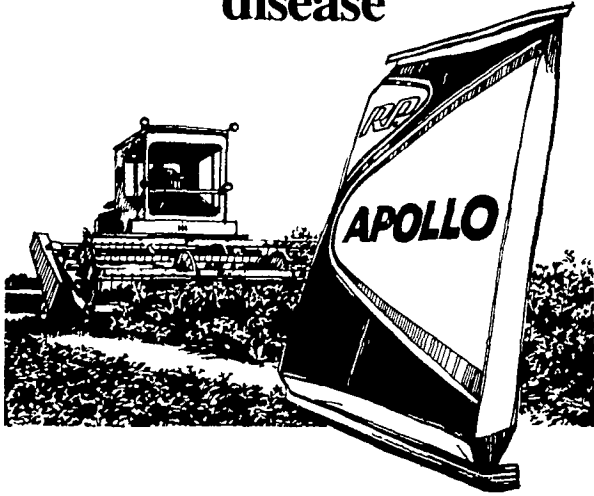


ROHRER'S

Distributors for RP forages from NAPB

(North American Plant Breeders)

**Your first choice
to beat "wet foot"
disease**



- High Resistance to Phytophthora root rot—"wet foot disease"
- Very high yield potential
- Excellent winterhardiness
- Rapid recovery after cutting
- Greater resistance to anthracnose, pea aphids and leafhoppers than most other alfalfas
- Available with GroZone™ Seed Coating

**Persistence
plus top yield
potential.**



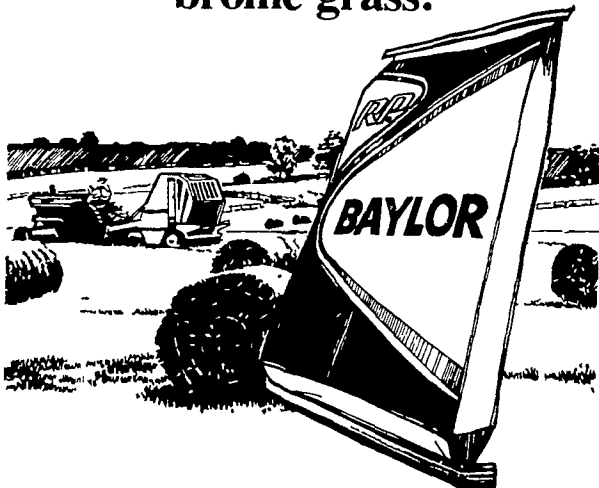
- Top quality forage even after typical two-year red clover rotation
- Excellent winterhardiness
- Resistance to southern anthracnose
- Tolerance to powdery mildew and northern anthracnose
- Full season performer that comes on early in the spring
- Available with GroZone™ Seed Coating

**Ahead in yields
and anthracnose
resistance.**



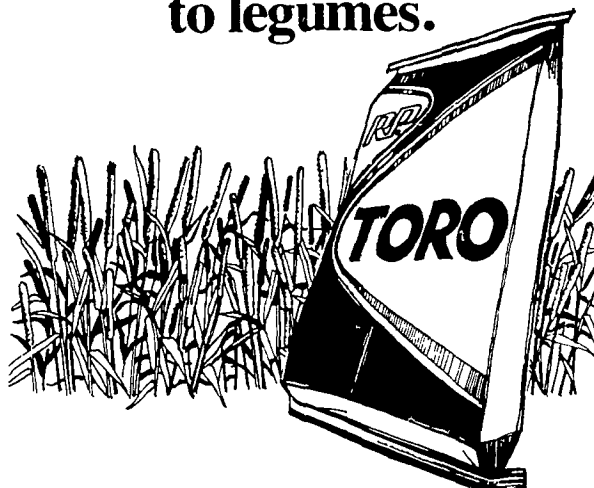
- Fights "summer decline" caused by anthracnose
- Proven yield leader
- Early maturity, fast regrowth
- Good bacterial wilt resistance
- Fine stemmed, leafy forage
- Available with GroZone™ Seed Coating

**Consistently
high-yielding smooth
brome grass.**



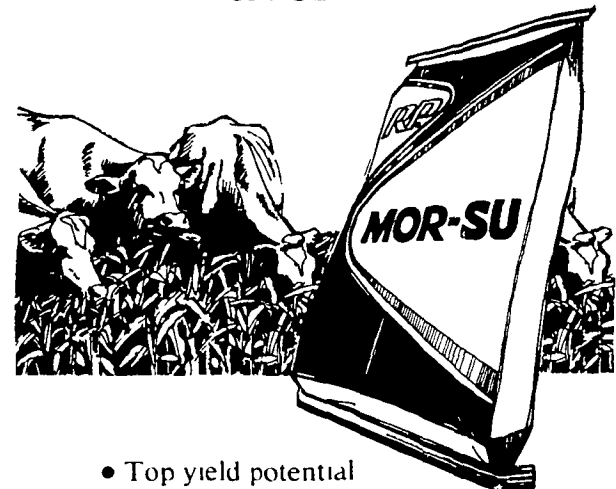
- Extra leafy, quality forage
- Ideal grass for use with legumes
- Broad disease resistance
- Excellent winterhardiness
- Good drought resistance

**New timothy
that stands up
to legumes.**



- Early maturing—ideal for use in alfalfa mixtures or straight grass seedings
- High yield potential
- Rapid growth and recovery ability
- Fine-stemmed and extra leafy
- Good leaf disease resistance

**The terrific
tonnage greenchop
favorite.**



- Top yield potential
- Fast recovery
- Long-season production
- Good disease resistance
- Fights heat and drought stress

PENNSYLVANIA DEALERS:

BELLEVILLE
Union Mill Soil Service
Phone (717) 935 2770

BERLIN
Robert D. Foor
Phone (814) 267 5187

BERWICK
John H. Fester
Phone (717) 752 5064

HANOVER
Carlton Seed Co
Phone (717) 225 3730

HARLEYSVILLE
Abram G. Metz
Phone (215) 287 7588

LANCASTER
Farmer's Supply Co
Phone (717) 394 7127

McVEY TOWN
William S. Kenepp
Phone (717) 899 6354

MEYERSDALE
Ivan J. Maust
Phone (814) 662 1222

MIDDLETOWN
John Alwine
Phone (717) 944-6270

MORGANTOWN
Ira Nissley
Phone (215) 286 9329

NEWBURG
Boyd Morrow
Phone (717) 423 5502

OSTERBURG
Ickes Farm Supply
Phone (814) 276 3422

RICHFIELD
Samuel E. Knouse
Phone (717) 463 2885

SHIPPENSBURG
Cumberland Valley
Cooperative Assoc
Phone (717) 532 2191

TAMAQUA
Kochs Farm Service
Phone (717) 668-4349

TURBOTVILLE
John O. Hershey
Phone (717) 649 5596

WARRIORS MARK
Helena Chem Co
Phone (814) 632 5177

IN N. MARYLAND

DARLINGTON
Glenview Farm
Jimmie D. Miller
Phone (301) 457 4287

HAGERSTOWN
Paramount Feed & Supply
Phone (301) 733 8150

NORTH EAST
George Underwood
Phone (301) 398 1541

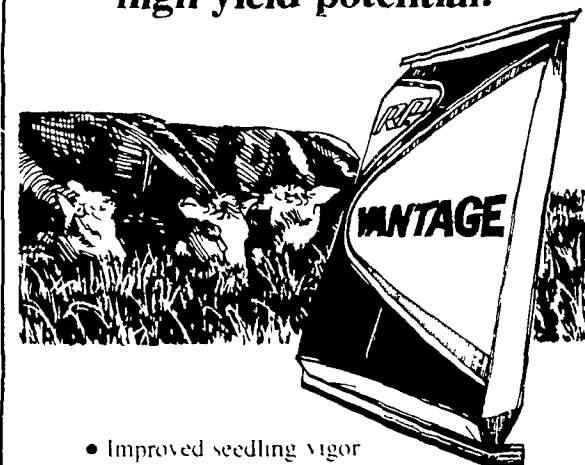
**Farmers Watch
For
Important Detailed
Announcement
Concerning**

CROP TOUR

To be held South of Manheim

AUGUST 13th
Sponsored by ourselves &
seven of our suppliers.

**New, vigorous
reed canarygrass
for easier
stand establishment;
high yield potential.**



- Improved seedling vigor
- Drought resistance
- Excellent early spring and early summer growth
- Great for upland pastures
- **Big plus:** Low in critical alkaloids which reduce palatability and cut into average daily gains

P.L. ROHRER & BRO., INC.

SMOKETOWN, PA

PH: 717-299-2571

Dealership inquiries invited