

Home On The Range

(Continued from Page C6)

GOOEY SHOOFLY PIE

1 egg
1 cup molasses
1 cup hot water
1 teaspoon soda

Crumbs:
1 cup flour
1 cup brown sugar
2 tablespoons melted butter

Beat the egg and add molasses. Dissolve soda in the hot water. Add it to the molasses and egg mixture. Mix the crumb mixture well with your hands and save ½ cup crumbs to sprinkle on the top. Put the rest into the gooey mixture in an unbaked pie shell and sprinkle crumbs on the top. Bake at 400° F. for 15 minutes then reduce heat and complete baking at 325° F. for approximately 35 minutes. Makes 1 large pie.

Donna Zimmerman, East Earl

SHOO FLY PIE

Crumbs:

¼ cup shortening
1 cup brown sugar
1½ cups flour
¼ teaspoon salt

Liquid:

1 egg
¾ teaspoon baking soda
1 cup molasses
¾ cup boiling water

In a medium sized bowl, beat the egg, then add the molasses. Add boiling water to the soda, then add to the molasses mixture and mix well. Put liquid into bottom of the crust. Mix the ingredients for the crumbs and sprinkle over the liquid. This is a gooey bottomed pie. Bake 15 minutes in 400° F. oven, then 350° F. for 35 minutes. Makes 1 9-10 inch pie.

Ruth Seasholtz, Obelisk

WET BOTTOM SHOO FLY PIE

1 cup flour
¾ cup brown sugar
1 tablespoon butter
1 cup dark molasses
¾ cup boiling water
1 teaspoon soda
1 beaten egg

Mix the flour, sugar and butter and set aside half of the mixture. Combine the remaining ingredients and mix the liquid with ½ of the crumb mixture. Pour into an unbaked pie shell and cover with the remaining crumbs. Bake for 11 minutes at 375° F. and for 30 minutes additional time at 350° F.

Mary L. Swartzentruber, Dover, Delaware

SHOO FLY PIE

1 cup molasses
1 teaspoon soda
1 cup hot water
Topping:
3 cups flour
1 cup brown sugar
1 teaspoon cinnamon
1 teaspoon cloves
1 teaspoon soda
½ cup lard

Mix the liquid part of the pie and pour into an unbaked pie shell. Mix the topping and pour on top of the gooey mixture. Bake in 400° F. oven for 10 minutes and turn the oven back to 350° F. for 30 minutes. Makes 4 pies.

Mrs. Roy Hetrick, Palmyra

WET BOTTOM SHOO FLY PIE

Crumbs:

1¾ cups flour
1 cup brown sugar
¼ cup margarine
¼ teaspoon salt
¼ cup margarine

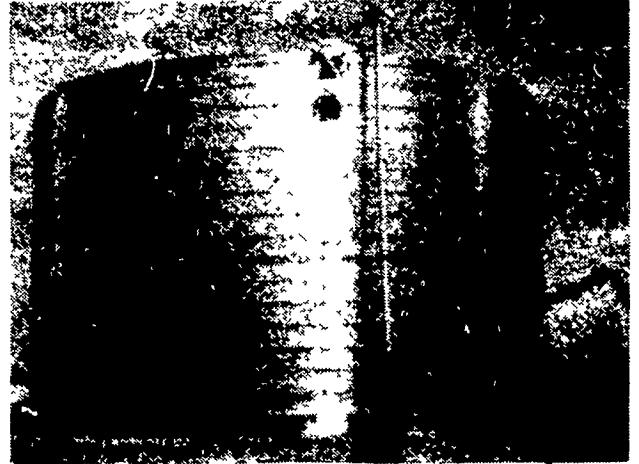
Liquid:

2 eggs, beaten
2 cups molasses
1¼ cups hot water
1½ teaspoons baking soda

Mix the liquid part and pour into the bottom of unbaked pie shells. Mix the crumbs and pour on top of the liquid. Bake the pies in 400° F. oven for 15 minutes and reduce the heat to 325° F. for another 25 minutes. Makes 3 8-inch or 2 9-inch pies.

Mrs. A. Martin, Womelsdorf

Lipp.



For Liquid Manure Storage.

Unique construction methods mean Lipp builds unique manure tanks—in fact, the strongest tank on the market today

We roll our tanks upward on location from coils of steel and seal the coil edges with a unique double fold lock seam. The result is a boltless, smooth inner wall tank in 12 to 90 foot diameters and up to 900,000 gallon capacities. Interiors can be epoxy or Black-Klad with aluminized or galvanized exteriors. And construction is quick.

We're Lipp. We're different and we're better. Storage is our specialty. Call or write today and get more details on the strongest manure tank available.

Lipp

CHESTER STOLTZFUS

Sales Representative
Route 2 Watsontown, PA 17777
717-649-5321

bobcat "It's some kind of animal!"

MORE
than just the No. 1 skid steer loader!

TURN THE BOBCAT into a backhoe forklift grapple too. Does the work of many one-job machines.

EXCAVATE scarify rake plow and remove snow clean barns sheds drill postholes. Bobcat does it.

THE BOBCAT comes as narrow as 35" is built low to work in tight areas turns full circle in its own tracks.

BUY OR RENT a variety of buckets and other attachments. Bob-Tach locks them on fast and solid.

LET US DEMONSTRATE
what the Melroe Bobcat loader can do for you. Drop in or call Bobcat—for the new breed of farmer and contractor.

GRUMELLI'S FARM SERVICE
Quarryville, PA 17566
Ph 717-786-7318
Ray Showalter 717-665-7174

RHODES EQUIPMENT
1085 Industrial Blvd
Southampton, PA 18966
Ph 215-677-6000

NORMAN D. CLARK & SON
Honey Grove, PA 17035
Ph 717-734-3682

GRASSHOPPER THE MOWER THAT MAKES OTHER MOWERS OBSOLETE

MID-SUMMER REBATE SALE

1. ELIMINATES HAND TRIMMING (Because your mower deck is out front)
2. HAS ZERO TURNING RADIUS
3. ALL HYDROSTATIC DRIVEN
4. MOWER P.T.O. SHAFT DRIVEN

\$150 to \$200 CASH REBATE
On Purchase of
1980 Model Grasshopper Mower

OFFER ENDS AUGUST 30

Make your best deal — then get up to \$200 cash from Lawn Care Distributors.

12 or 16 H.P. Engine
In 44", 52", and 61"
Mower Deck Widths

OPTIONAL ATTACHMENTS AVAILABLE

- Snowthrower or snow plow
- Vacuum grass catcher

PROGRAM AVAILABLE AT THE FOLLOWING DEALERS ONLY:

PENNSYLVANIA	ROGLEN EQUIPMENT Elverson, Pa., Chester Co 215-286-9648	DELAWARE
A.F.M. EQUIPMENT CO. Plainsville, Pa., Luzerne Co 717-824-7918	STOLTZFUS FARM SERVICE Cochranville, Pa., Chester Co 215-593-2407	KEENER & SENSENIG CO. Wilmington, Del 302-655-2790
BLUE MOUNTAIN ENTERPRIZE Jonestown, Pa., Lebanon Co 717-865-2994	THOMAS FARM EQUIP. Avondale, Pa., Chester Co 215-268-2181	
CHARLIE'S SALES & SERVICE Brogue, Pa., York Co. 717-927-6500	LAWN CARE OF PA. Martindale, Pa., Lancaster Co 215-445-4541	
NEIMAN EQUIPMENT Dover, Pa., York Co 717-292-2101	JOHN McLURE JR. Warrior's Mark, Pa., Huntingdon Co 814-632-5955	

SEE THE GRASSHOPPER On Display At AG PROGRESS DAYS AUG 19 - 21

FOR ADDITIONAL INFORMATION ON THE GRASSHOPPER MOWER
(Unique In A Class Of It's Own)
Call or Write
LAWN CARE DISTRIBUTORS
Box 25, Martindale, Pa 17549
Phone 215-445-4541
Dealer Inquiries Invited