

Livestock market and auction news

Hay Markets

Regional Hay

Friday, July 18
Report supplied by PDA
 (All hay No. 2 and better, prices paid by the dealers at the farm and per ton.)
 Hay steady to strong; second cutting Alfalfa in demand and up to \$10 higher. Straw steady to weak.
 Alfalfa 60.00-75.00; Mixed hay 35.00-50.00, few to 60.00; Timothy hay 30.00-35.00; Straw 25.00-40.00; Mulch 20.00-30.00.

Green Dragon Hay

Ephrata, Pa.
Friday, July 18
Report supplied by PDA
 18 Loads Hay and 20 Loads Straw.
 Alfalfa 77.00-117.00; Mixed hay, few 55.00-61.00; Timothy hay 36.00-69.00, mostly 44.00-51.00; Straw 50.00-61.00; Ear Corn, 9 loads 106.00-119.00, individual 124.00; Speltz, individual 1.50 per bushel.

New Wilmington Hay

New Wilmington, Pa.
Friday, July 18
Report supplied by PDA
 Prices per ton:
 8 Loads Hay.
 Mixed hay 33.00-65.00; Timothy hay 43.00-65.00; Ear Corn, 5 loads 74.00-85.00; Oats, 3 loads 75.00-101.00.

Good's Hay

Leola, Pa.
Wednesday, July 23
Report supplied by auction
 48 loads.
 Alfalfa 3 loads 70.00, 91.00, 93.00; Mixed 55.00-78.00; Orchardgrass 64.00; Timothy three loads 66.00, 69.00 and 75.00; Straw 48.00-54.00; Corn 111.00-116.00, one at 121.00.

Dewart Auction

Dewart, Pa.
Monday, July 21
Report supplied by PDA
CATTLE 146. Compared with last Monday's market, slaughter cows \$1.75-\$2.25 lower. Few Choice 1050-1300 lbs. slaughter steers 65.00-68.25, few Good 60.50-64.00, few Standard 56.25-59.00. Individual Choice slaughter heifer at 60.25, individual Good at 58.00. Utility and Commercial slaughter cows 41.00-45.50, couple to 47.25, Cutters 37.75-44.75, Canner and Low Cutters 36.00-40.50, Shells down to 35.00. Yield Grade No. 1-2, 950-1900 lbs. slaughter bulls 51.75-54.00, couple to 57.25. One Lot Large Frame #1, 600-725 lbs. feeder heifers at 66.00.

CALVES 157. (Bulk of supply returned to farm). Choice vealers 97.00-102.00, few Good 80.00-92.00, Standard 70-95 lbs. & Good 78.00-83.00. Farm Calves: Holstein Bulls 90-130 lbs. 103.00-121.00, few down to 85.00; few Hol. heifers 85-100 lbs. 87.00-115.00.

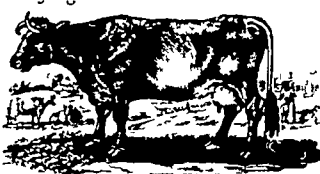
HOGS 472. Barrows and gilts \$1.50-\$2 higher. US No. 1-2 200-230 lbs. barrows and gilts 45.40-45.90, couple lots 46.10, No. 1-3 190-240 lbs. 44.50-45.60, No. 1&3 130-180 lbs. 35.00-40.00. US No. 1-3 300-600 lbs. sows 37.00-40.00. Few Boars 27.00-31.00.

FEEDER PIGS 156. US No. 1-3 20-35 lbs. feeder pigs 11.50-17.50 per head, No. 1-3 40-60 lbs. 18.50-26.50, one lot No. 1-3 at 100 lbs. 36.50 per head, few lots Utility 15-20 lbs. 9.50-10.00 per head.

SHEEP 39. Good and Choice 75-100 lbs. spring slaughter lambs 55.00-61.50. Slaughter ewes 15.00-26.50.

New Holland Hay

New Holland Sales Stables
Monday, July 21
Report supplied by auction
 65 loads.
 Alfalfa 78.00-109.00; Timothy 51.00-69.00; Mixed 54.00-68.00; Straw averaged 53.00; Corn averaged 120.00.



Middleburg Auction

Tuesday, July 22
Report supplied by PDA
CATTLE 294. Compared with last Tuesday's market, slaughter cows \$1 to \$2 higher. High Choice & Prime slaughter steers 68.75-70.00, Choice No. 2-4 1050-1500 lbs. 65.75-68.50, Good 59.00-65.10, Standard 55.00-59.50, Utility & Low Yielding Standard 52.00-54.50. Few Choice slaughter heifers 60.50-62.60, Good 55.60-59.10, few Standard 52.85-56.50. Utility & Commercial slaughter cows 44.00-48.75, couple 49.25, Cutters 42.00-47.00, Canner & Low Cutter 38.35-42.00. Few Choice slaughter bullocks 61.85-68.00, one at 72.00, few Good 60.00-62.50. Yield Grade #1 1250-2550 lbs. slaughter bulls 53.85-63.10. Few Medium Frame #2 500-750 lbs. feeder steers 62.50-66.00; few Medium Frame #2 550-750 lbs. feeder heifers 54.50-60.00.

CALVES 138. Bulk of supply returned to the farm. Couple Prime vealers 92.00 and 93.50, Choice 85.00-89.00, Good 80.00-85.00, Standard & Good 70-100 lbs. 68.00-75.00. Farm calves, holstein bulls 85-125 lbs. 80.90-110.00, couple to 115.00; holstein heifers 75-140 lbs. 97.50-160.00.

HOGS 652. (Monday, July 21, 1980). Barrows & gilts \$1 to \$1.50 higher. US No. 1-2 210-235 lbs. barrows & gilts 44.50-45.85, No. 1-3 190-250 lbs. 44.00-44.60, No. 2-3 190-270 lbs. 42.00-44.00. US No. 1-3 300-480 lbs. sows 38.00-41.25, No. 2-3 255-575 lbs. 34.75-38.25. Boars 26.75-31.00. (Tuesday Hogs 69). US No 1-2 195-225 lbs. barrows & gilts

43.00-44.50, one lot No. 1-3 200 lbs. 43.75.

FEEDER PIGS 358. US No. 1-3 10-20 lbs feeder pigs 8.00-14.00 per head, No. 1-3 20-40 lbs. 13.00-19.00, No. 1-3 40-60 lbs. 18.00-29.50 per head.

SHEEP 38. Good & Choice 80-100 lbs. spring slaughter lambs 58.50-64.00. Slaughter ewes 18.00-23.00.

Four States Livestock

Hagerstown, Md.
Thursday, July 17

Report supplied by auction
SLAUGHTER: Fed Steers strong demand, higher prices. Choice 64.00-65.00; Good 60.00-63.00; Medium 59.00 Down. Heifers Choice 60.00-62.00; Good 54.00-59.00; Medium 53.00 Down. Cows mostly steady prices. High Yield 46.00-47.00; Average 42.00-45.00; Big Middle 38.00-41.00; Shelly 41.00 Down. Fat Bulls \$2.00 lower. Good 52.50-53.85; Medium 49.00-52.00. Veal Calves Heavy Calves 2.00 lower. Light calves steady. Good 80.00-85.00; Medium 70.00-79.00; Farm Hfrs. to 167.50; Farm Bulls to 112.00; Light & Weak 70.00 Down. Lambs \$2.00 lower. Choice 62.00-63.00; Good 59.00-61.00; Medium 58.00 Down.

STOCKER: Steers 300-550 lbs. small run, lower prices. Good 68.00-71.00; Medium 62.00-67.00; Culls 61.00 Down. Steers 600-850 lbs. Choice 64.00-68.00; Good 57.00-63.00; Medium 56.00 Down. Heifers (All Weights) Choice 56.00-60.00; Good 51.00-55.00; Medium 50.00 Down. Bulls Choice 64.00-67.00; Good 60.00-63.00; Medium 59.00 Down. Springing Heifers to

990.00. Pigs, Hd. strong demand for heavy shoats. 20-30 lbs. 8.00-18.00; 40-60 lbs. 19.00-23.50. Shoats by Lb. to 46.00. Slaughter Hogs \$1.50 higher. 210-230 lbs. 42.00-44.10; 240-260 lbs. 43.00-43.75; 185-205 lbs. 37.25-40.00. Sows 300-600 lbs. 38.00-40.75.

Martinsburg Auction

Martinsburg, Pa.
Monday, July 21

Report supplied by auction
CATTLE 180. Choice slaughter steers 66.00-69.00, Good 62.00-66.00, Standard 58.00-61.00, Utility 54.00-57.00. Good slaughter heifers 63.00-66.00, Standard 58.00-63.00, Utility 48.50-56.00. Utility & Commercial slaughter cows 45.00-49.50, Cutters 43.00-46.00, Canner & Low Cutter 40.00-43.00, Shells down to 36.00. Good slaughter bullocks 63.00-67.00, Standard 57.00-61.50, Utility 52.50-56.00. Yield Grade #1 1000-2000 lbs. slaughter bulls 57.00-61.00; yield grade #2 900-1600 lbs. 53.00-56.50.

CALVES 270. Choice vealers 95.00-119.00, Good 84.00-90.00, Standard & Good 90-110 lbs. 75.00-81.00, 70-90 lbs. 70.00-74.00, Utility 55-100 lbs. 58.00-68.00. Farm calves, holstein bulls 90-120 lbs. 105.00-126.00; holstein heifers 85-130 lbs. 120.00-178.50.

HOGS 489. US No. 1-2 200-240 lbs. barrows & gilts 44.00-45.50, No. 1-3 195-230 lbs. 43.00-44.20, No. 2-3 250-270 lbs. 42.00-43.50, No. 1-3 130-185 lbs. 40.00-42.00. US No. 1-3 300-575 lbs. sows 38.00-42.00,

No. 2-3 300-650 lbs. 37.00-39.00. Boars 30.00-38.00.

FEEDER PIGS 78. US No 1-3 20-35 lbs. feeder pigs 11.50-22.50 per head, No. 1-3 35-50 lbs. 22.00-31.50 per head.

SHEEP 5. Few Choice spring slaughter lambs 66.00. Slaughter ewes 12.00-21.00.

Shenandoah Valley Livestock

Harrisonburg, Va.
Saturday, July 19

Report supplied by auction
STOCKER, FEEDER, AND SLAUGHTER CATTLE: Good Light Steer Calves 79.00-83.50; Medium 74.00-79.00; Plain 69.00 and down; Good Heavy Steers 65.00-70.00; Medium 60.00-65.00; Plain 55.00 and down; Holstein Steers 53.85 and down; Good Slaughter Steers 62.00-64.00; Good Light Heifer Calves 63.00-65.50; Medium 58.00-63.00; Plain 53.00 and down; Good Heavy Heifers 53.00-56.00; Medium 48.00-53.00; Plain 43.00 and down; Slaughter Cows 42.00-47.50; Utilities 37.00-42.00; Canners & Cutters 30.50 and down; Milk & Stock Cows 525.00 and down; Stock Bulls 68.00 and down; Slaughter Bulls 60.75 and down.

CALVES: Veal Calves 107.50 and down; Baby Calves 76.50 and down.

SHEEP & LAMBS: Choice Blue O 66.00; Good Red O 55.50; Feeder Lambs 58.50-59.50; Slaughter Ewes 17.00 and down.

HOGS: Top 43.85; Heavy 38.85-42.00; Medium 35.85; Light 35.50; Sows 39.00 and down; Boars 25.25 and down.

FOR SALE FEEDER PIGS
 State Graded - Vet Inspected
 Excellent Quality and Delivery Service
 Credit Service Available
JOHN H. THOMAS, JR.
 Millersville, Pa. 17551 Ph 717-872-5646
 Complete Line of RED ROSE Feeds
 Management Program

SECHLER'S POULTRY, INC.
 BUYERS & SELLERS OF LIVE
 Leghorn, Medium, Heavy Fowl, Broilers & Roosters
 We use our own live haulings
 COVERING EASTERN U.S. & CANADA
 CALL 215-488-7617 for price quotes.
 Box 55, Strausstown, PA 19559
SCOTT SECHLER

FRIDAY, AUGUST 8 ON THE FARM MONTHLY BRED GILT SALE
 Sale to start promptly at 1:00 Every 4 weeks
 Located 18 miles south of Lancaster, PA, 6 miles south of Quarryville, take Rt. 272 to Little Britian, turn north, follow Little Britian Rd. to Jackson Rd. 2nd farm, OR Take Rt. 222 out of Quarryville to Cedar Hill Rd to Little Britian Rd. to Jackson Rd. Watch for sale arrows
 50 to 60 Head more or less
 2 & 3 Way Crossbred Gilts York & Hampshire & Duroc
 Due to farrow 3 days to 4 weeks after sale date Now everything vaccinated for both Lepto & Erysipelas, wormed and sprayed for lice
 Local trucker available
 No hogs sold on commission
CHRIST A. BEILER
 RD 2, Quarryville, PA
JOHN B. STOLTZFUS
 Abe Diffenbach Auctioneer
 NEXT SALE DATE - SEPT. 5

Green Dragon Livestock Sales
 1 mile North of Ephrata, PA
COWS COWS COWS BUYERS FROM 3 STATES
 Regular consignments from Ray Kyper, Bob Kennedy, Dale Brewer and Ed Stover plus local consigners.
 Lots of good Northern Feeders and Stockers.
SALE EVERY FRIDAY
 Bulls, Steers, Slaughter Cows, Lambs and Veal Calves
 11:00 A.M. - Beef Sale Stockers & Feeders 200 to 250 each week.
 12:30 P.M. - Dairy Cows
 7:00 P.M. - Small Animal Sale
 For Special Sales and Herd Dispersals on the farm or at our barn or other market information call: Office 717-733-2444.
WALTER H. RISSER, Proprietor

ATTENTION FARMERS!!
SPRAY MATERIALS
IM-PRUV-ALL
MEDINA SOIL ACTIVATOR
 Check Our Prices Before You Buy.
MELVIN R. WEAVER
 2213 Leabrook Road, Lancaster, PA 17601
 Ph 717-898-8354 or 569-6576