

## Longmead Farm

(Continued from Page B2)

grandson of the 1972 All-American Reserve Grand Champion. His dam is a 20,000-pound producer.

"We want to get his semen out into other good herds and get him proven," King said.

Along with increasing herd numbers, the Longmead operation also features an updated feeding program.

The ration includes 30 pounds of wet brewers grain and 30 pounds of corn silage fed together in the bunk. Five pounds of hay are fed daily, too.

A batch of farm-ground supplement includes 400 pounds of Agway Buxmont, 40 pounds of McNess Buffer and 40 pounds of Dairy Premix, four bales of soybeans and 2,200 pounds of corn.

The cows also get free choice of vitamin and mineral mix.

Physical facilities include a 35-stanchion barn with pipeline. Originally, it was a 16-stall horse barn.

A 60-free stall addition was erected seven years ago, along with the milk house. A 20 by 80-foot silo went up two years before.

Cropping includes 10 acres of barley, followed by corn. Twenty acres are in alfalfa.

First cutting went in the silo and the second was baled. The remaining 100 or so tillable acres are in corn. Most goes in the silo and some picked or sold off.

The Kings had another dairy bonus this year. Daughter, Yvonne, is well

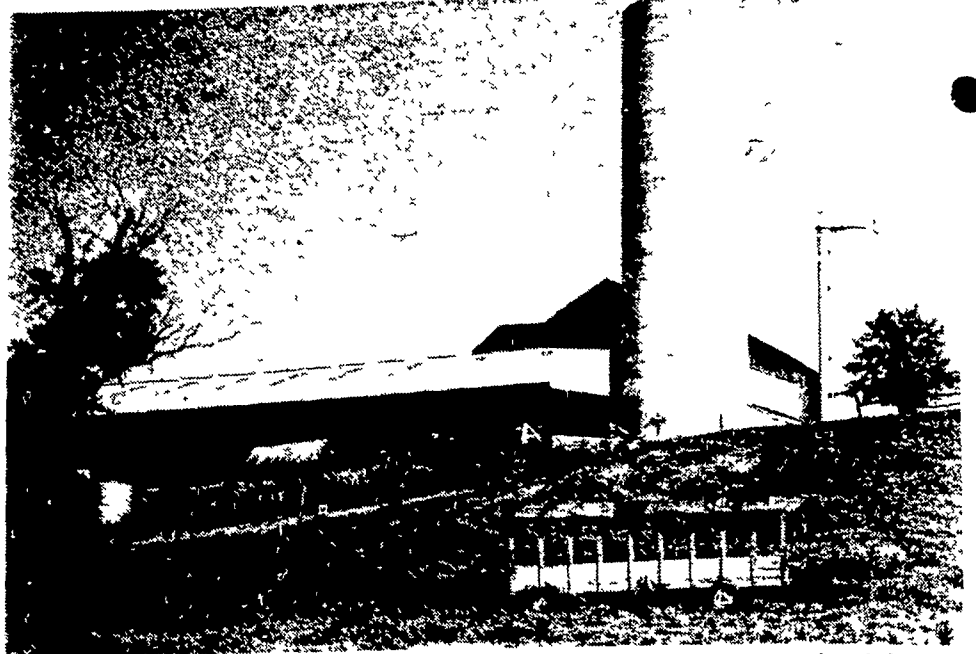


Chester County Dairy Princess Yvonne King looks out over her family's farm.

into her reign as Chester County Dairy Princess.

Other children are Gwen, 22, a nursing college graduate; Wanda, 17; Jewell, 14; Theresa, 12; and Joe Jr., 19.

**WRITER'S POST-SCRIPT:** Many thanks to the King family for permitting me to wander around their farm during pre-dawn hours to photograph the "Morning Milking" page found elsewhere in this issue.



Old and the new: Tin and wood wagon was once used to haul hay. In background is newer free stall barn.



Pony and her colt are framed through foundation remains of original house on Longmead Farm.



Joe King Jr. holds new young bull, Fultonway Turbulence, which was just delivered last week.

### STOLTZFUS MEAT MARKET RETAIL MEAT MARKET CORN FED BEEF

- FRESH CUT BEEF & PORK
  - FRESH EGGS RIGHT FROM THE FARM
  - ★ OUR OWN COUNTRY CURED HAMS, BACON AND SWEET BOLOGNA
- Orders Taken For Beef Sides; Wrapped And Ready For Your Freezer



**Attention Farmers:**  
We Do Custom  
Beef Slaughtering

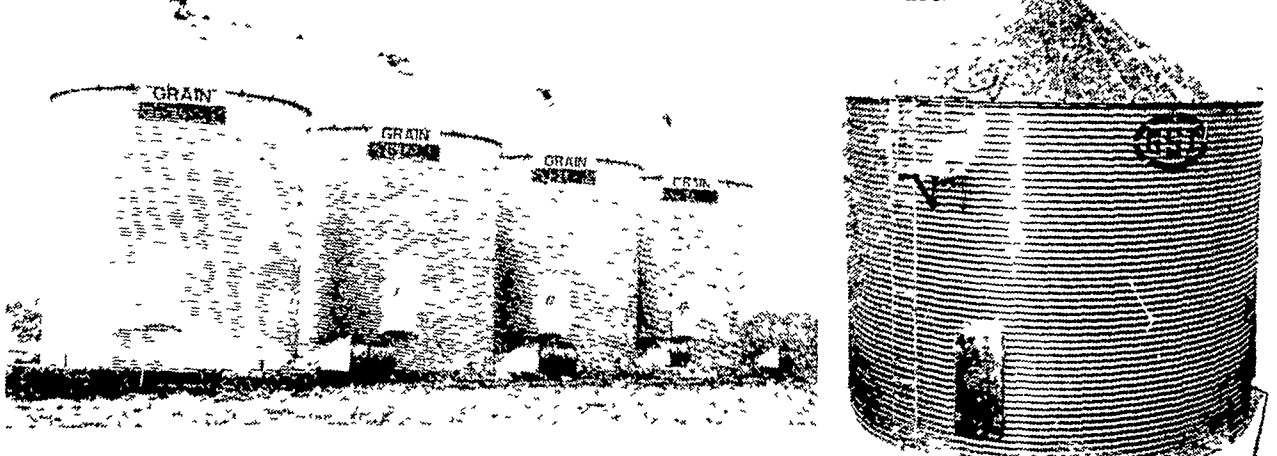
PH: 768-7166

Directions: 1 block east of Intercourse on Rt. 772  
Reg. Hours: Thurs. 9-5; Fri. 9-8; Sat. 8-5

## THE SYSTEMS PEOPLE ► POULTRY, GRAIN AND LIVESTOCK EQUIPMENT

### Ⓢ A GSI ON-FARM STORAGE SYSTEM

NEW 4" WIDE FARM BIN WITH CORRUGATED ROOF



#### FEATURING:

- All galvanized steel with G-90 galvanized coating, including galvanized doors.
- Our steel is A446 Quality or a minimum yield of 40,000 pounds per square inch.
- Walk around steps on top of roof.
- Equipped with safety rings.
- No welding anywhere on roof, prevents rust.
- Slotted holes to raise & lower roof for air movement for drying

#### SPECIAL SALE ON IN STOCK GRAIN EQUIPMENT

- GRAIN BINS
- GRAIN SPREADERS
- AERATION FLOORS
- GRAIN CLEANERS
- AERATION FANS
- AUGER EQUIPMENT
- NEW & USED DRYERS

SERVING THE INDUSTRY OVER 20 YEARS



FULL LINE PARTS DEPARTMENT

★ WE SELL, SERVICE AND INSTALL

