

Horse show

(Continued from Page C32)

he was running at the track."

In a horror story with a happy ending, Greta told how T Model was rescued from starvation.

"He was a mercy case," she said. "He was one of 16 horses at Horse Haven Stables that were abandoned — one of them died of starvation. It was a case where the owner was paying someone to take care of his horses, and the money

wasn't being used to feed them."

She added with a smile that she recently heard the animals had been caught, and could never again have a license to operate.

Confessing that when she first got T Model she hid him under a blanket so that people wouldn't see his condition, Greta explained she put 900 pounds on the Thoroughbred and began to recondition him — but only after six months of

recuperation. "Now," she laughs, "I have a jumper with too much steam and wonder why."

Twenty-four-year-old Greta is a 4-H leader with the Fredericksburg Community Club. She adds with pride she was one of the original members of Lebanon County's Equestrians, the county 4-H horse club.

First place in the Novice Hunter class went to Mary Ann Sanders, Lebanon. In her fifth year of showing, the nineteen-year-old took her Quarter Horse mare, Schwartz Rose, over the course with the best performance and conformation.

Elizabethtown's Jessie Zarfoss won the Open

English-Pleasure Class with her mount Fool's Gold, a 14-year-old mare.

High point individuals in Games and Performance were Julie Trimmer, York, and Jodi Florschotz, respectively.

Judges for the event were Terry and Liz Stevens, Bangor, of Wil-Or-El Tramping Stables.

The results for Sunday's classes follow:

HALTER

1. Deb Jury, R2 Newport;
2. Crystal Zeller, R2 Bernville;
3. Harry Zimmerman, Red Lion;
4. Robert Kain, Jr., Hershey;
5. Shelly Fetterhoff, Harrisburg.

DOLLAR BAREBACK

1. Sheri Pierce, Schaeferstown;
2. Ron Baer, Bethel;
3. Jackie Babe, Jonestown;
4. Mary Seward, Lebanon;
5. Murray Lynn Frazier, Lebanon.

SCURRY RACE

1. Mel Keller, Lebanon;
2. Dallas Baer, Bethel;
3. Julie Trimmer, R4 York;
4. Kathy Roberts, Lebanon;
5. Dawn Dohner, Annville.

JR. WESTERN PLEASURE

1. Sheri Pierce;
2. Robin

- Moulton, Lebanon;
3. Kris Buck, Lititz;
4. Jodi Florschotz;
5. Murray Lynn Frazier.

OPEN WESTERN PLEASURE

1. Ralph Wingemoth, Stevens;
2. Deb Jury;
3. Jodi Florschotz;
4. Kris Buck;
5. Crystal Zeller.

OPEN SADDLE SEAT PLEASURE

1. Meagan Burrichter, Annville;
2. Marta Lipensky, Lebanon;
3. Shelly Fetterhoff;
4. Francis McGee, York;
5. Karen Schengrund, Lebanon.

KEYHOLE RACE

1. Julie Trimmer;
2. Bill Faust, R1 Barnesville;
3. Ron Baer;
4. Dawn Dohner;
5. Kris Lehn, Lebanon.

BARREL RACE

1. Julie Trimmer;
2. Bill Faust;
3. Charly Saam, Lebanon;
4. Dallas Baer;
5. Dawn Dohner.

JR. ENGLISH PLEASURE

1. Shelly Brown, Lebanon;
2. Darlene Zapcik;
3. Karen Schengrund;
4. Robin Moulton;
5. Jessie Zarfoss, Elizabethtown.

OPEN ENGLISH PLEASURE

1. Jessie Zarfoss;
2. Harry Zimmerman;
3. Chris Swartzbaugh, R2 Manchester;
4. Ginny Herman, R2 Newport;
5. Marg Wood.

BARNYARD JUMPING

1. Greta Scott, Jonestown;
2. Charity Saam;
3. Darryl Baer;
4. Carla Ditzler, Jonestown;
5. Mary Seward.

NOVICE HUNTER

1. Mary Ann Sander, Lebanon;
2. Amy Jo Peters, Lebanon;
3. Greta Scott;
4. Carla Ditzler;
5. Harry Zimmerman.

REG. WORKING HUNTER

1. Lena Slesser;
2. Amy Jo Peters;
3. Greta Scott;
4. Carla Ditzler;
5. Harry Zimmerman.

OPEN SADDLE SEAT EQUITATION

1. Shelly Fetterhoff;
2. Marta Lipensky;
3. Melissa Hartnett;
4. Francis McGee;
5. Corbie Underkoffler, Frystown.

POLE BENDING

1. Dallas Baer;
2. Darryl Baer;
3. Dawn Dohner;
4. Julie Trimmer;
5. Charly Saam

OPEN WESTERN EQUITATION

1. Crystal Zeller;
2. Sheri Pierce;
3. Kris Buck;
4. Jodi Florschotz;
5. Brenda Miller, Lebanon.

HUNTER UNDER SADDLE

1. Chris Swartzbaugh;
2. Robin Moulton;
3. Jessie Zarfoss;
4. Debbie Bednasz;
5. Ginny Herman.

EGG AND SPOON

1. Charity Saam;
2. Murray Lynn-Frazier;
3. Jackie Babe;
4. Cindy Griffin, Grantville;
5. Carla Ditzler.

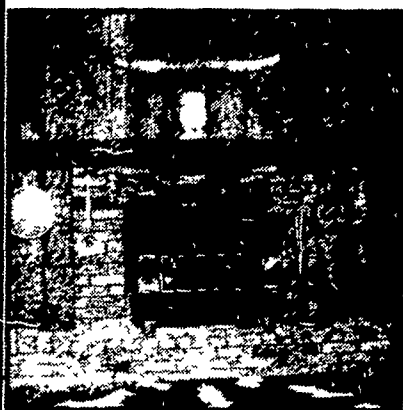
WESTERN RIDING

- 1., 5. Murray Lynn Frazier;
2. Carla Ditzler;
3. Charity Saam;
4. Sheri Pierce;
5. Murray Lynn Frazier

(Turn to Page C34)

WORRIED ABOUT FUELISH HEATING BILLS??

SURDIAC Coal Burning Stoves will comfortably heat your entire home for approximately \$150-\$250 per heating season!!



This stove remains unexcelled in:

- ★ BEAUTY
- ★ QUALITY
- ★ PERFORMANCE
- ★ MINIMAL CARE & MAINTENANCE
- ★ EFFICIENCY

BUY NOW! PRICE INCREASE AUGUST 15

ELMER L. STOLTZFUS

171 QUARRY ROAD, LEOLA, PA 17540

PH: 717-656-9041

COMPLETE FARM PAINTING



We Use Quality PAINT

AERIAL LADDER EQUIPMENT

- Modern and Efficient Method
- Reasonable Prices
- Spray On and Brush In Method
- Sandblasting If Necessary

FOR FREE ESTIMATES WRITE:

ESH SPRAY PAINTING

(Daniel S. Esh, C. Ralph Miller)
 SPRAY-ON AND BRUSH IN PAINTER
 Box 350A
 Ronks, PA 17572
 or call this number
 717-687-7007
 or 717-687-8262
 INDUSTRIAL
 COMMERCIAL
 RESIDENTIAL



If you have fat cattle or need feeders ...

THINK NEW HOLLAND

BEEF SALES

MONDAY - 1:30 P.M.
 THURSDAY - 11:00 A.M.

Sale Order - Fat Bulls, Steers, Stockers and Beef Cows
 Veal Calves - 4:30 Thurs.

NEW HOLLAND SALES STABLES, INC.

Phone: 717-354-4341

Daily Market Report - Phone: 717-354-7288

Abe Diffenbach, Manager

Field Representatives - Alan Diffenbach 717-656-9806

Luke Eberly 215-267-6608

THE NEW ANSWER?

Use

Sila-Prime



A PROBIOTIC FERMENTATION AID

The Natural Way To Improve Haylage/Silage

- ★ ALFALFA
- ★ CEREAL GRAINS
- ★ CLOVER
- ★ CORN SILAGE
- ★ FORAGE SORGHUM
- ★ GRASS
- ★ BALED HAY
- ★ HIGH MOISTURE CORN



- ★ CATTLE & HOG MINERALS
- ★ CUSTOM CANVASS WORK

AARON S. GROFF & SON

FARM & DAIRY STORE

RD3, Ephrata, PA 17522 (Hinkletown)

Phone: (717) 354-4631

Store Hours: 7 A.M. to 9 P.M.

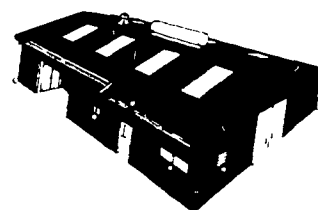
Closed Tues., Wed. & Sat. at 5:30 P.M.



VERNON MYERS, INC.

STEEL BUILDINGS & GRAIN STORAGE

R.D. 4 - Box 845
 Lebanon, Pa. 17042
 Phone: (717) 867-4139



Build for the Future, Today



Business has been good. You've outgrown your present facilities and must move to larger quarters. That will solve the problem today, but what about tomorrow?

A Mesco building may be the solution to your problems both now and in the future. Because it's a systems building, it means a faster, more economical structure today and easy low cost expansion tomorrow.

Find out more about how Mesco Building Systems can solve your future building needs. Call us today.



PLAN NOW FOR GRAIN STORAGE TO TAKE ADVANTAGE OF ASCS INTEREST-FREE LOANS ON 1980 CROP.

WE PROVIDE THE MOST MODERN QUALITY PRODUCTS AND SERVICES AVAILABLE IN GRAIN HANDLING AND STORAGE EQUIPMENT.

- BINS -
- FANS -
- DRYERS -
- AUGERS -
- BUCKET ELEVATORS -

COMMERCIAL and AGRICULTURAL BUILDINGS
 We Offer Complete Erection On Any Size Or Style Building.

Mail Coupon Today!

- SEND STEEL BUILDINGS LITERATURE
- SEND GRAIN STORAGE LITERATURE

NAME _____

ADDRESS _____

CITY _____

STATE _____ ZIP _____

TELEPHONE _____