

York County DHIA Monthly Report

YORK COUNTY DHIA
June, 1980

YORK — The high herd was Avalong Farms R7 York with 29 Holstein cows producing 56 1 pounds of milk and 2 13 pounds butterfat

Second high was Smyser's Richlawn Farms R1 York with 69 Holstein cows producing 58 6 pounds milk and 2 12 pounds butterfat

The high cow was Darcy a five year old Holstein from Smyser's Richlawn Farms who produced in 305 days 24 298 pounds milk and 96 pounds butterfat

Second high was Flicka a four year old Holstein owned by Wayne Myers Dover who produced in 305 days 18 014 pounds milk and 889 pounds butterfat

OWNER NAME OR NUMBER	BREED	AGE	DAYS IN MILK	LBS. MILK	% FAT	LBS FAT
Avalong Fms Inc	B3	28 8	90 9	56 1	3 8	2 13
Smyers Richlawn	3	68 8	85 2	58 6	3 6	2 12
Beshore Farms	3	43 6	82 4	58 7	3 5	2 05
Sinking Spring Fm	3	65 5	90 4	49 6	4 0	1 97
Avalong Farms Inc	2	43 4	89 1	39 6	5 0	1 97
H Fetrow & Sons	3	75 0	84 2	49 2	3 8	1 89
Wayne E Myers	B3	34 0	85 7	50 7	3 7	1 88
Earl Fuhrman	3	71 1	86 7	44 4	4 2	1 87
Lynn Wolf	B3	48 0	83 7	53 8	3 5	1 87
Paul R King	3	51 0	87 7	50 3	3 7	1 86
Thomas A Boyer	3	36 7	91 5	53 4	3 5	1 85
Leonard W Greek	3	22 3	93 8	44 9	4 1	1 84
Geo Knight	3	123 0	91 4	48 0	3 7	1 77
Guy Leader & Sons	2	84 7	85 9	36 1	4 8	1 75
Phillip Laughman	3	25 5	86 7	46 9	3 7	1 75
Wayne B Mummert	B3	73 9	81 8	47 6	3 7	1 75
Melvin R Lehr	B3	44 5	85 6	51 1	3 4	1 75
Leonard W Greek	3	23 2	81 7	44 8	3 9	1 75
R & M Stewart	3	47 4	90 9	46 7	3 7	1 72
William Ruppert	B3	57 3	87 7	47 7	3 6	1 72

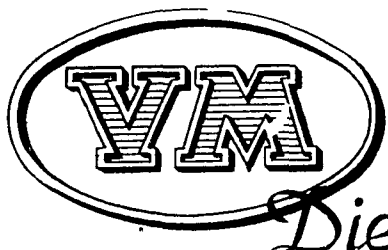
Wayne L Sweitzer	B3	60 0	97 0	48 4	3 5	1 71
Rodman C Thompson	3	56 0	87 1	47 1	3 6	1 68
T Edwin Johnson	3	51 9	86 1	45 4	3 6	1 65
Richard E Stough	B3	36 0	82 8	43 1	3 8	1 65
Kevin Holtzinger	B3	141 1	87 4	45 9	3 6	1 65
T & M Walker	G3	41 6	86 8	47 2	3 5	1 64
Brenner Farms	B3	25 0	95 3	43 8	3 7	1 63
Edwin L Calhoun	B3	39 8	84 4	44 6	3 7	1 63
William S Buser	B3	86 1	90 2	45 1	3 6	1 63
Kenneth Rexroth	B3	96 5	90 7	42 1	3 8	1 62
John H Doll Jr	B3	33 0	84 1	45 5	3 5	1 58
Claude M Cooper	B3	36 0	89 1	45 0	3 5	1 58
Honeycrest Fm	B2	94 6	83 6	36 4	4 3	1 58
Fred Sprengle	3	34 5	84 4	42 9	3 7	1 57
Fantom & Gordon	B3	55 5	96 8	43 6	3 6	1 57
Rutter Bros	2	75 4	86 6	31 6	4 9	1 55
Elvin G Molison	B3	103 5	84 8	43 9	3 5	1 55
Adrian Rinehart	B3	88 0	87 6	47 2	3 2	1 53
R & F Feeser	3	104 4	89 4	44 6	3 4	1 52
B Robert Charles	B3	46 0	72 5	42 6	3 5	1 51
Gum Tree Farm	3	36 6	94 8	40 2	3 7	1 50
C Robert Kilgore	B3	41 0	84 1	44 7	3 4	1 50
Dale Barshinger	B3	39 8	90 8	48 9	3 1	1 50
John D Adams	B3	65 1	90 6	41 0	3 6	1 49
Leroy Bupp	B3	61 6	83 7	39 6	3 7	1 48
Albert Dehoff	B3	123 0	90 0	39 8	3 7	1 47
Ramsey Cooper Jr	B8	56 2	94 4	41 5	3 5	1 47
Fawn Valley Farm	B3	64 6	83 8	39 3	3 7	1 46
Eugene B Taylor	B3	48 3	86 2	39 6	3 7	1 46
Donald Lanius	B2	85 6	89 8	29 9	4 8	1 45
Mc Ral Dairy Farm	B3	115 7	84 1	42 6	3 4	1 44
J & M Hushon	B3	93 9	87 4	38 3	3 7	1 42
Dennis McWilliams	B3	58 1	89 9	38 6	3 7	1 41
Donald Wilson	B3	43 4	93 1	40 2	3 5	1 41
Rick L Cook	B3	80 0	92 6	37 9	3 7	1 40
John C Krone	B8	38 0	90 0	39 7	3 5	1 40
Vincent C Webb	B3	66 9	86 4	39 2	3 5	1 38
Mervin W Hertzler	2	70 8	91 0	29 9	4 6	1 38
Robert W Mays	B3	63 2	87 8	42 5	3 2	1 38
Philip Stambaugh	3	51 3	87 4	38 0	3 6	1 37
Elwood T Kruck	B3	76 0	92 5	35 6	3 8	1 36
Eugene M Kilgore	B8	48 3	85 4	41 0	3 3	1 35
Robt Baumgardner	B3	56 0	88 2	36 9	3 7	1 35
Benjamin Beiler	G3	36 0	88 9	45 3	3 7	1 66
Doll Zirkle	B3	32 0	83 8	41 7	3 7	1 53

OWNER	BREED	NO COWS	% DAYS IN MILK	LBS MILK	% FAT	LBS FAT
Geo Knight						
Millie	3	9 10	305	20,586	2 8	577
2	3	3-9	305	19,530	3 6	701
132	3	4 1	300	13,493	4 1	557
20	3	3 7	269	11,816	4 2	500
Fawn Valley Farm						
Lorena	3	3-8	286	17,454	3 3	575
Edith	3	4 0	305	13,949	3 8	530

Lancaster Farming, Saturday, July 26, 1980—C21

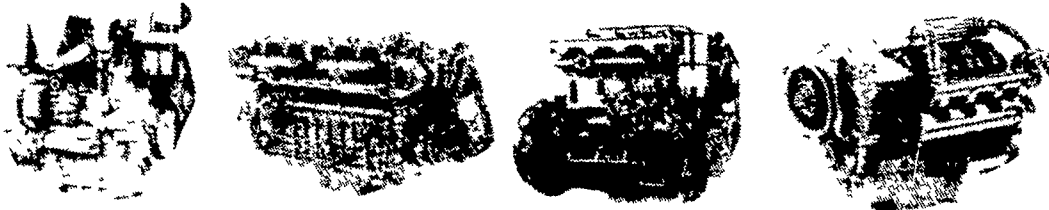
Judith	3	4-8	305	12,416	4 1	505
30	3	3-1	305	11,364	4 8	551
Janet61	3	2-8	305	15,054	3 7	552
JO-78	3	2-4	286	12,060	4 4	533
Emory & Wm Kilgore						
56	3	4 2	304	13,644	3 7	509
Gum Tree Farms						
142	3	5 6	305	13,694	3 9	531
David V Thompson						
62	3	8-7	305	14,285	4 2	606
165	3	2-8	305	15,177	3 5	528
Ellis Crowl						
Daisy	3	5-11	299	12,998	4 1	534
B28	3	7-4	303	11,829	5 0	588
R10	3	2-11	305	11,036	4 5	502
Donald Lanius						
Spot	2	7-5	305	11,235	4 9	550
Millie	2	5-9	305	10,900	5 0	544
Sarah	2	5-3	289	8,678	5 8	501
Sinking Spring Fm Inc						
Libby	3	8-3	305	20,381	3 8	779
Mattie	3	3-6	305	14,124	4 4	616
Del	3	3-2	305	19,395	3 9	754
Liza	3	2-3	305	16,503	4 8	793
Candid	3	2-1	305	17,347	4 3	740
Rutter Bros						
Jay	2	9-3	305	12,211	4 8	581
Easy	2	6-2	305	10,354	5 7	586
Beshore Farms						
Amy	3	9-1	305	26,079	3 2	825
Alda	3	5-3	305	16,548	3 5	583
Bessie	3	6-0	305	17,921	3 4	611
Nora	3	4-5	283	18,328	3 8	696
Harold Brown						
Nora	3	5-2	305	16,160	3 2	515
Gum Tree Farm						
W Cloud	3	6-6	305	16,149	3 8	621
Albert Dehoff						
123	3	5-8	305	14,481	3 6	515
153	3	5-0	305	16,631	3 6	606
161	3	5-1	305	15,391	3 4	525
180	3	4-4	305	16,848	3 2	537
191	3	4-0	305	15,220	3 7	565
270	3	1-11	305	14,300	3 6	514
The J E Baker Co						
32	3	8-3	305	13,791	3 8	524
1	3	5-11	347	19,528	4 4	851
Eugene M Kilgore						
Farrar	3	4-10	305	21,454	3 1	673
Thomas A Boyer						
Maisie	3	10-11	305	17,669	3 6	629
Silver	3	6-5	305	21,512	4 0	852
Tinsel	3	5 6	300	16,537	3 7	619

(Turn to Page C22)



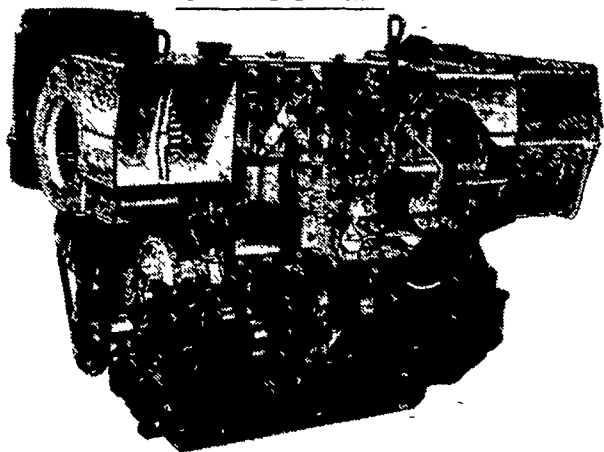
REPOWER With VM DIESEL

Harvesters, Haybines,
Tractors, Cornpickers,
Balers, Hydraulic
Systems, Corn Binders
Choppers

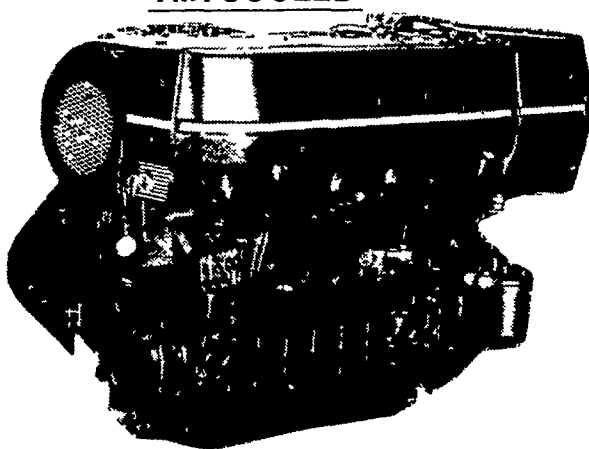


All New HR Series

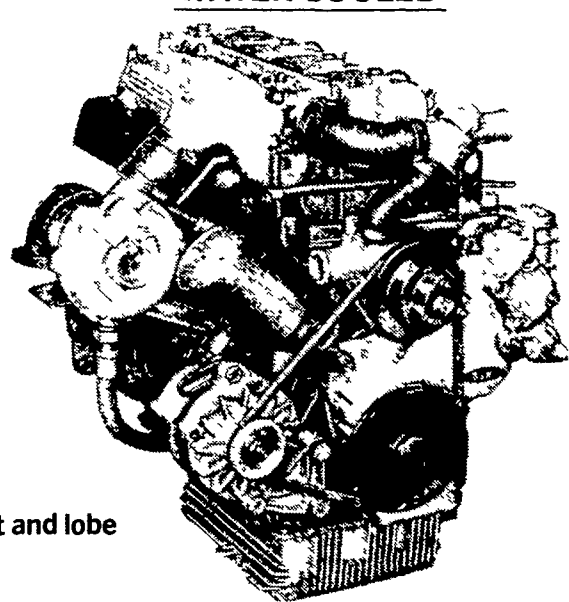
OIL COOLED



AIR COOLED



WATER COOLED



General Features:

- Integrally cast cylinders with inserted and removable wet type cylinder liners
 - Light hypereutectic alloy pistons
 - Extra-resistant steel connecting rods alloyed with special alloy head bearings
 - Surface hardened steel crankshaft
 - Drop-forged, casehardened and tempered steel camshaft
 - Anti-friction cast-iron tappets alloyed
 - Cast-iron tunnel type crankcase
 - Rotary injection pump with mechanical governor
 - Force-feed lubrication with built-in circuit and lobe type pump
 - Diaphragm pump feed
 - Oil and fuel filters with integral type element.
- Special structure and patented engine with consequent increases in performance and easier operation with low weight/output ratio low smoke emissions.
- Engine based on a design "modulus" formula which allows a maximum parts standardization and interchangeability.

USED DIESELS

- SR 2 Lister
- SR 3 Lister
- HRS 6 Lister
- 1 Cylinder Deutz
- DVA 2200 Sianzi

Call Us
About Our

CASH REBATES on DAN and V-Series Engines

SPECIAL: VM 1306 V SERIES

QUEEN ROAD REFRIGERATION

Box 67, Intercourse, PA 17534
Phone: John D. Weaver - 717-768-9006 or 768-7111
or Answering Service - 717-354-4374

24 HOUR
SERVICE