

Lancaster Co. DHIA

(Continued from Page C18)

Jay L Ranck	RH	8 2	305	13,664	4 8	658
Wendy						
John B Groff	GrH	6-10	305	19,209	3 4	657
52						
H Landis Weaver	RH	6-3	305	20,707	3 2	656
Ele						
John J Landis	RH	4-5	301	16,627	3 9	656
Deal						
Harry H Ranck Jr	RH	4 10	305	15,917	4 1	656
Mellon						
Aaron E Allgyer	RH	7-4	305	14,795	4 4	656
Bunny						
Robert E Kulp	RH	3-10	283	14,156	4 6	655
56						
John A Brubaker Jr	RH	7-0	305	19,611	3 3	654
40						
Clarence W Shirk	RH	5-11	305	17,278	3 8	653
King						
Samuel F Long	RH	3 4	295	16,678	3 9	653
Karen						

LeRoy M Oberholtzer	RH	4-7	300	15,997	4 1	653
Carla 9						
J Carl Zander	RH	5 8	305	18,855	3 5	652
Fay						
James Martin	RA	6-11	305	16,371	4 0	651
Beulah						
Dan S Stoltzfus	RH	5-10	305	20,168	3 2	650
Ange 110						
Charles Tindall Jr	GrH	4-2	305	16,248	4 0	650
She						
Paul V Nissley	GrH	3 3	305	15,562	4 2	650
Fancy						

OWNER	BREED	NO COWS	% DAYS IN MILK	LBS. MILK	% FAT	LBS. FAT
Paul H Martin	RH	36 0	87 3	56 8	4 1	2 32
Ru Be Mar Farms	RH	27 0	92 9	62 7	3 7	2 30
Robert H Kauffman	RH	65 4	93 0	59 6	3 7	2 22
Tritown Farm	RH	31 0	93 1	58 0	3 7	2 17
Paul D Welk	RH	65 5	89 2	55 8	3 8	2 11
Spring Belle Farm	RH	43 0	86 5	55 4	3 8	2 09
A & J Zimmerman	R&GrH	27 4	92 7	65 0	3 2	2 08
Benuel Z Lapp	R&GrH	45 1	91 6	56 9	3 6	2 07
Nelson H Wenger	RH	45 8	86 5	50 0	4 1	2 06
J Mowery Frey Jr	R&GrH	56 9	86 2	55 7	3 6	2 02
Gusty Crest Farm	R&GrH	31 6	91 1	55 0	3 7	2 02
Elmer M High	R&GrH	54 1	85 0	53 9	3 7	2 02
K D & Else Linde	RG	44 2	85 6	40 8	4 9	2 00
J Robert Kindig	RH	56 3	94 7	51 9	3 9	2 00
John K Peters	R&GrH	43 0	88 4	53 6	3 7	2 00
John E Fisher	R&GrH	32 0	96 5	57 7	3 4	1 97
Abraham Shelly Jr	R&GrH	41 7	89 5	54 8	3 6	1 97
David K Stoltzfus	RH	34 4	88 2	56 8	3 5	1 96
Simeon B Beiler	R&GrH	33 5	92 0	56 6	3 5	1 96
H H Haverstick	RH	42 0	92 1	49 3	4 0	1 95
Ben K Stoltzfus	RH	35 2	90 1	53 0	3 7	1 94
L M Oberholtzer	R&GrH	47 0	98 6	56 6	3 4	1 94
Robert Kauffman Jr	RH	93 5	87 8	50 4	3 8	1 94
Rosegale Farm	R&GrH	35 6	97 6	50 5	3 8	1 94
John Omar Stoltzfus	RH	44 6	94 0	51 7	3 7	1 93
Springarden Farm	RH	78 5	87 3	55 0	3 5	1 93
Vernon R Umble & Son	RH	80 8	84 0	47 0	4 1	1 93
Ivan M Hursh	R&GrH	36 2	85 1	48 1	4 0	1 92
Gerald Martin	RH	50 2	86 9	49 9	3 8	1 91
Daniel E Fisher	R&GrH	39 0	91 6	52 0	3 7	1 90
R W Ulrich Jr	R&GrJ	89 2	88 4	37 9	5 0	1 89

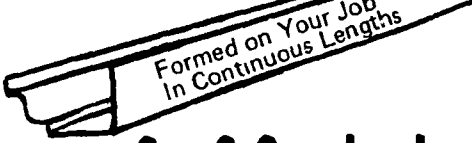
Lancaster Farming, Saturday, July 26, 1980—C19

G E Burkholder	R&GrH	63 3	88 1	50 6	3 7	1 89
Abner K Esh	R&GrH	24 0	95 7	53 3	3 5	1 89
Donald R Bare	RH	67 5	86 9	52 6	3 6	1 89
Nelson R Habecker	R&GrH	75 6	90 7	49 9	3 8	1 89
Earl R Hursh	R&GrH	39 6	86 4	57 3	3 3	1 88
Robert L Shelly	RH	32 6	85 4	49 2	3 8	1 88
David McMichael	R&GrH	77 7	85 2	53 1	3 5	1 88
Neff Brothers	R&GrH	53 9	85 0	50 6	3 7	1 87
Harold G Shelly	RA	18 1	100 0	46 8	4 0	1 87
Christ R Beiler	R&GrH	34 9	88 4	55 1	3 4	1 86
R & L Witmer	RG	71 5	87 2	35 8	5 2	1 85
Ivan S Stoltzfus	RH	48 4	85 5	49 6	3 7	1 85
Jay E Landis	RH	43 2	86 7	48 5	3 8	1 85
Paul E Martin	RH	44 1	80 2	47 4	3 9	1 85
Jonas E Zook	RH	36 3	88 6	54 5	3 4	1 85
P Rohrer & Sons	R&GrH	79 0	90 6	53 0	3 5	1 85
Bart Dell Farm	RH	27 9	92 3	51 1	3 6	1 85
C Dale Bollinger	RH	41 7	91 6	50 4	3 7	1 84
John M Harnish	RH	152 7	92 0	51 9	3 5	1 84
Aaron K Stoltzfus	RH	36 3	86 1	49 6	3 7	1 84
C Witmer Sherer	RH	46 8	85 2	50 1	3 7	1 84
Earl S Weaver	R&GrH	51 0	95 3	52 2	3 5	1 84
Weaver Homstead Fm	R&GrH	82 0	88 2	50 2	3 6	1 83
D & S Weaver	R&GrH	47 5	93 4	50 7	3 6	1 83
Hiram S Augst	R&GrH	54 6	88 4	51 8	3 5	1 82
Donald M Eckman	R&GrH	47 2	91 3	53 3	3 4	1 82
Jacob L Stoltzfus	R&GrH	50 0	82 4	45 0	4 0	1 82
Elmer & Kerry Boyd	Mix	28 0	92 3	48 9	3 7	1 82
Milky Way Farm	GrH	31 9	86 3	51 5	3 5	1 82
Lester J Wiker	R&GrH	59 9	88 6	47 3	3 8	1 81
Mervin Sauder	R&GrH	39 3	84 9	50 5	3 6	1 81
J R Metzler & Son	RH	32 9	87 9	49 5	3 7	1 81
Swaying Maple Farm	R&GrH	39 6	95 0	49 1	3 7	1 81
Paul B Zimmerman	RH	38 9	84 7	45 4	4 0	1 80
Fred Crider	RG	52 7	87 5	39 0	4 6	1 80
John F Petersheim	RH	41 0	93 1	51 9	3 5	1 80
Amos M Stoltzfus	RH	39 0	84 6	50 1	3 6	1 79
C Nevin Hershey	RH	49 8	83 8	49 8	3 6	1 79
Andrew G Miller	RH	45 4	81 0	51 3	3 5	1 79
Christian Zook	RH	52 0	87 9	46 6	3 8	1 79
Daniel S Esh Jr	RH	37 6	95 8	50 5	3 5	1 79
Harold K Witmer	RH	32 0	91 8	47 3	3 8	1 79
Moses M Beiler	R&GrH	34 0	85 5	55 4	3 2	1 79
John S Wenger	RH	56 2	90 2	45 5	3 9	1 78
J H Musser & Son	R&GrH	52 0	88 2	50 8	3 5	1 78
G & J Hershey Bros	R&GrH	61 4	91 0	49 6	3 6	1 78
Steve E Stoltzfus Jr	RH	35 0	93 3	49 6	3 6	1 78
Jonas B Lantz	RH	37 4	88 8	50 2	3 5	1 77
T & J Harnish	R&GrH	77 4	87 5	49 6	3 6	1 77
Aaron Z Martin	R&GrH	29 1	86 0	43 8	4 0	1 77
D Shellenberger	R&GrH	37 2	95 8	53 1	3 3	1 77
Henry U Stoltzfus	R&GrH	44 0	92 5	49 7	3 6	1 77
Elam K Stoltzfus	R&GrH	45 3	93 0	48 4	3 6	1 76
Pequea Meadows Fm	R&GrH	73 0	90 5	45 8	3 8	1 76
Cedar Fringed Farm	RG	124 8	86 4	37 0	4 7	1 75
John J Landis	RH	64 9	92 7	46 7	3 7	1 75
R Edwin Harnish	R&GrH	38 0	93 9	48 7	3 6	1 75
Abraham S King	RH	35 8	88 4	50 7	3 5	1 75
Jonas B Stoltzfus	R&GrH	49 1	87 8	48 9	3 6	1 75
J B Stoltzfus Jr	R&GrH	43 5	96 2	47 4	3 7	1 74
Dale & Steve Hershey	RH	51 3	95 4	47 5	3 7	1 74
Robert & Joyce Wagner	RG	67 8	95 6	34 7	5 0	1 74

(Turn to Page C20)

SEAMLESS Gutters

- Protects
- Beautifies
- Now In 5 Colors
White, Black
Green, Ivory, Brown



Sam S. Smucker, Inc.

LANCASTER, PA. 17602
717-392-3369

Free Estimates
20 Years of Service

**ROOFING
SPOUTING
SIDING**

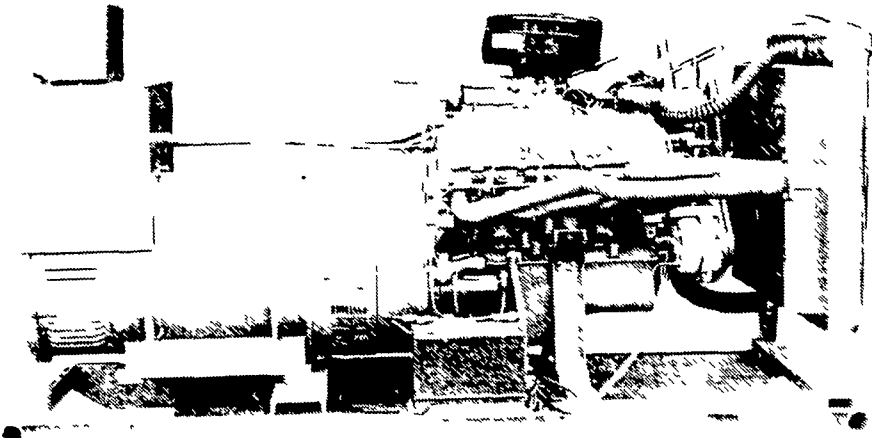
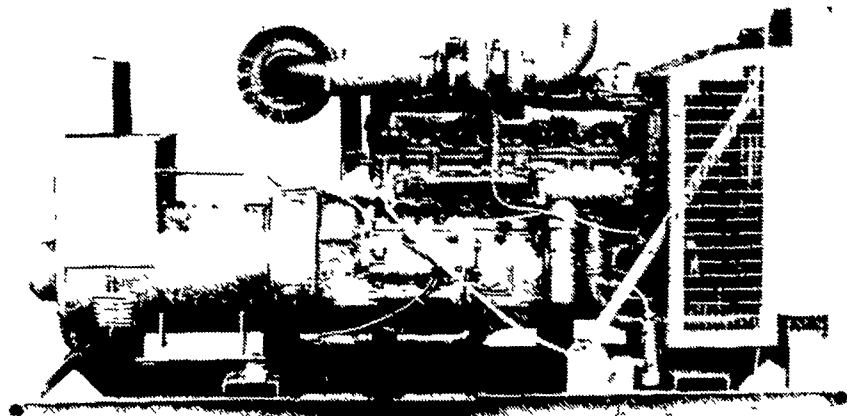
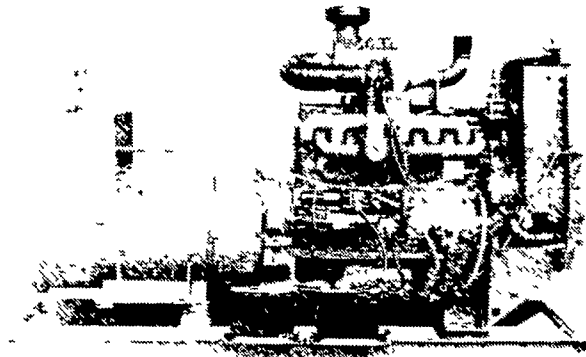
Replace that leaky barn roof with Fabral steel, 32" wide - any length up to 40'. Galvanized or colored.

AUTOMATIC GENERATORS

— All Sizes and Shapes —

When the Electric
Goes Off . . .
And Things Get All
Mixed Up . . .

Call 717-274-1483
For A Generator
To Turn You On



— THE ORIGINATOR OF AGRICULTURE SWITCH GEAR —

MAXI-POWER GENERATORS

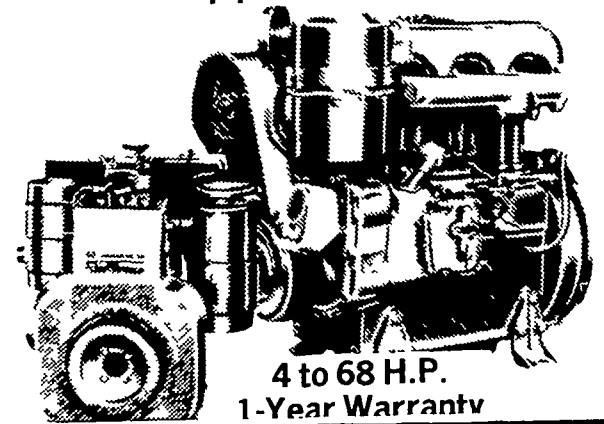
330 FONDERWHITE RD., LEBANON, PA 17042
LEONARD MARTIN CO. 717-274-1483

★ RADIO DISPATCHED TRUCKS ★ 24 HOUR SERVICE

WINGO

THINK DIESEL THINK LOMBARDINI

26 different models
designed to fit most
gasoline engine
applications



4 to 68 H.P.
1-Year Warranty

LOMBARDINI
The Powerhouse

The fastest growing line of small,
air-cooled diesels in America.

Authorized sales service and
parts. Call today for a quotation.

Distributor

HOOVER DIESEL SERVICE

PH: 717-656-6133

2998 West Newport Rd. Ronks, Pa 17572

2 1/2 miles East of Leola - Along 772

DEALER INQUIRIES INVITED