

Junior Cooking Edition

Katie Stoltzfoos mailed her recipes with a short note. She said that she has started a notebook with junior cooking recipes. Sounds like a nice activity for a hot afternoon under a shade tree.

Jennifer Bulson's recipe for Swedish Cream was taught to her by her mother. She said her grandmother gave her a cookbook for Christmas.

In addition to the recipes mailed by these two young ladies, we also have two recipes for hats — Amish Hat Cookies and Bachelor Hats. Keep up the good work gang. Hats off to our junior cooks!

EASY CHOCOLATE CAKE

- ½ cup shortening
- 2 cups sugar
- 3 eggs
- 1¾ cups flour
- 1½ teaspoons baking powder
- 1½ teaspoons soda
- ¾ cup cocoa
- 1½ cups hot water
- 1½ teaspoons vanilla

Mix all ingredients at once. Bake at 350° F. until top springs back when touched lightly.

Elizabeth Weaver, Age 9, McAlisterville

DRIED BEEF CASSEROLE

- 1 cup uncooked macaroni
- 1 cup milk
- 1 can cream of mushroom soup
- ¼ pound Cheddar cheese
- 1-2 ounces chopped dried beef
- ½ small onion
- ½ cup celery
- 2 hard boiled eggs

Mix everything together and refrigerate over night. Bake at 350° F. for 1 hour. Ground beef may be substituted for dried beef.

Corvin M. Zimmerman, Age 13, Fleetwood

(Turn to Page C12)

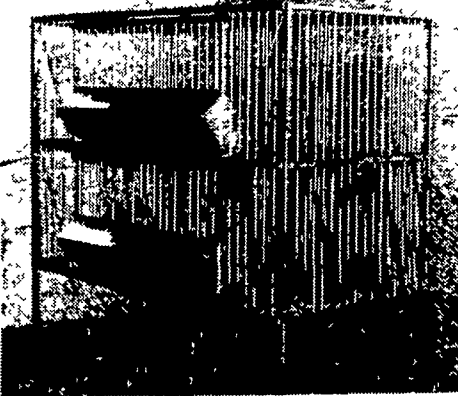
TRI-COUNTY SWINE SYSTEMS

SILVER LINE CONFINEMENT EQUIPMENT

GESTATION STALLS

"Silver Line" Gestation Stalls are solidly constructed of 1½" steel tubing and ½" pipe. Several basic patterns provide the versatility needed for installation in the variety of today's confinement systems

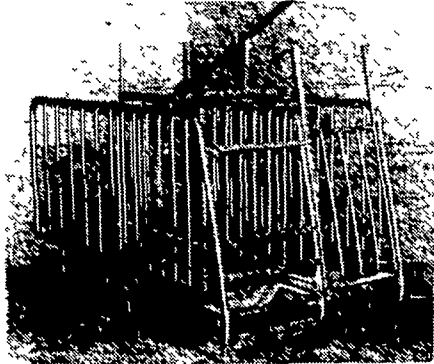
★ NURSERY CAGES



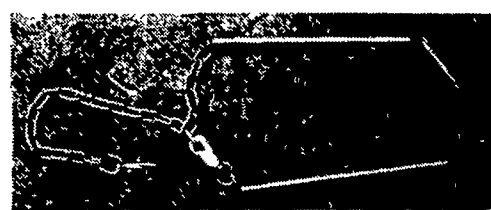
★ TETHER STALL



★ STANDARD STALLS



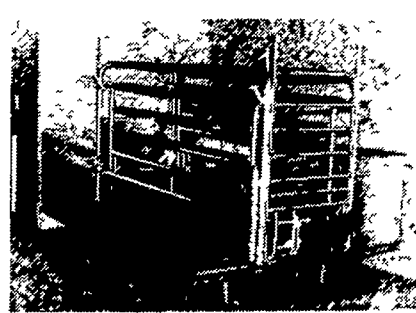
★ TETHER COLLAR



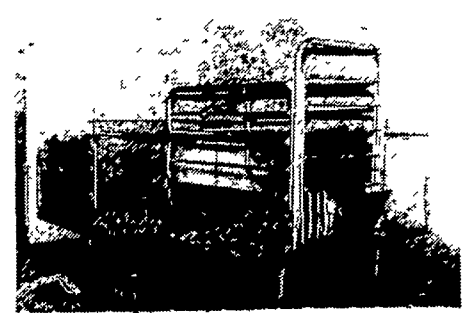
FARROWING CRATES

The "Silver Line" offers an up-to-date choice between the Quickside conventional crate or the New Tether crate. With either choice, convenience, durability, and economy are standard features

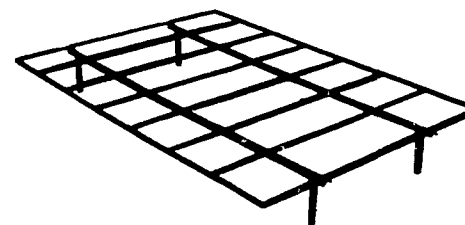
★ QUICKSIDE CRATE



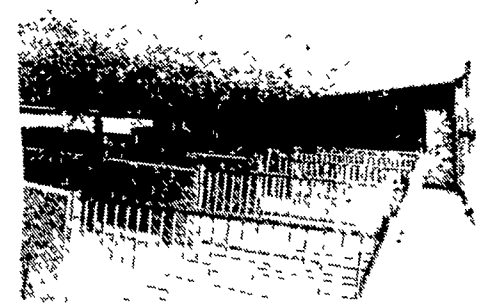
★ TETHER CRATE



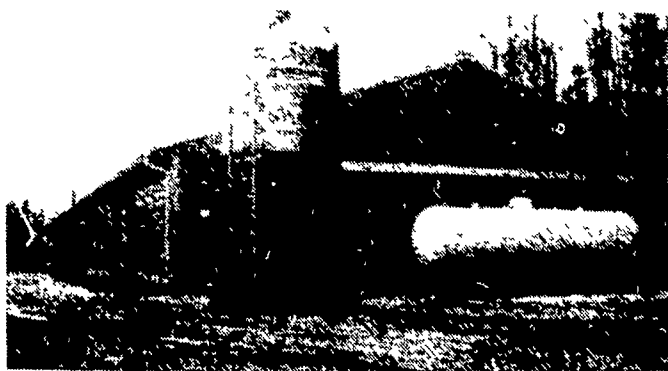
★ SUPPORT FRAMES



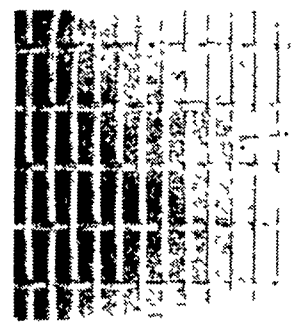
★ FINISHING FENCING



Let Us Help You Plan A Farrowing or Finishing Unit That is Right For You.



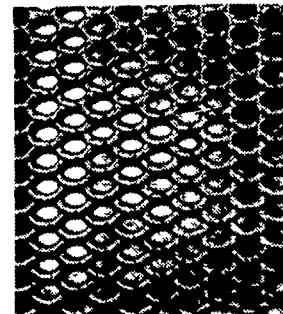
GALVANIZED WOVEN WIRE FLOORING



SIZES IN STOCK: 5x7, 4x8, 3x6
★ CUSTOM SIZES AVAILABLE AT NO EXTRA CHARGE

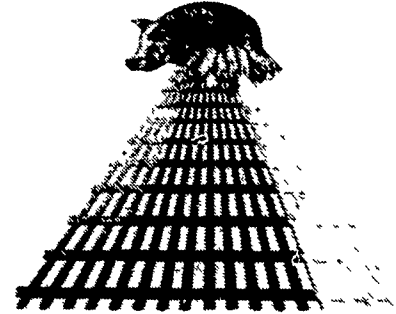
CUSHION COATED FLOORING

EXPANDED METAL



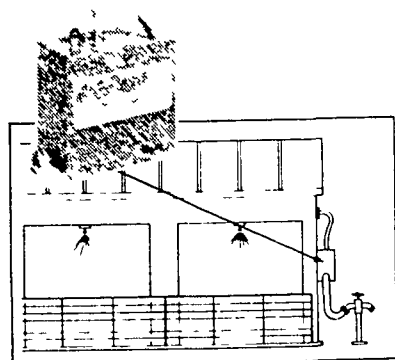
SIZES IN STOCK: 5x7, 4x8, 3x6

WOVEN WIRE



SIZE IN STOCK: 4x8
OTHERS AVAILABLE

LIFETIME WARRANTY



New from TroJan.

Hog Wash

Hog cooling system

The simple, reliable system that cools hogs when they need it, shuts down when they don't. And does it without failure-prone electricity or timers.

The TroJan Hog Wash hog cooling system consists of the Heart of Hog Wash control unit, six nozzles rated at eight gallons per hour, 50 feet of ¾ inch I.D. hose plus enough tees, clamps, etc. to install quickly on six pens. The control unit is easily connected to water supply by garden hose and will handle up to 16 nozzles (45 p.s.i.). Accessory packages are available with enough equipment for adding six more pens to system at a time.

INTRODUCTORY OFFER \$125

Offer Expires August 2

TRI-COUNTY

PHONE 717-274-3488

LEBANON PA.



SWINE SYSTEMS

THE "SILVER LINE" -- Dependable, Up-To-Date Equipment
Mfg. By Tri-County Swine Systems
SEE OUR EQUIPMENT ON DISPLAY AT OUR LOCATION

HOURS: Mon. - Fri. 7:00 to 4:30
Owners: Carl Martin & Robert High

TRI-COUNTY SWINE SYSTEMS IS AN AUTHORIZED DISTRIBUTOR FOR THE FOLLOWING EQUIPMENT:

- Schuld Feed Bins
- AAA Inc. Ventilation Systems
- Warner Flex Augers
- Aerovent Fans
- Osteo Hog Scales
- Woven Wire Flooring
- Cushion Coated Flooring
- Pax Equipment
- Martin Air Ventilation Systems
- Monoflo Hog Waterers
- Lixit Hog Waterers
- Brower Equipment
- Nobbe Concrete Slats
- Magic Ray Catalytic Heaters
- Kane Feeders
- Stanfield Heating Pads
- L.B. White Heaters