



JULY 21-27, 1980  
Shady for your lady

Hurricane season begins Jesse James robbed first train July 21  
1873 Full moon July 27 Average length of days for the week,  
14 hours 42 minutes Dog Days now Cuban revolution  
began July 26, 1953 Stars and Stripes over Guam again July 28  
1944 Gold and love affairs are difficult to hide



hot coals once in a while. There are preparations sold today that consist of powdered zinc and salt for that purpose.  
Home Hints When storing furs in the summer, lay a tallow candle in or near them and there will be little danger of worms.

#### OLD FARMER'S WEATHER FORECASTS

**New England:** Week begins showery and warm, then cloudy and cooling, clear and hot for weekend.  
**Greater New York-New Jersey:** Partly cloudy and cool, showers south, most of week, weekend is clear and warm.  
**Middle Atlantic Coastal:** Week starts hot with showers south and rain north, rainy and cool middle of week through week's end.  
**Piedmont & Southeast Coastal:** Cool, cloudy, then rain east beginning through middle of week, weekend is sunny and hot.  
(All Rights Reserved Yankee Inc. Dublin, N.H. 03444)

#### Valley Livestock

Valley Stockyards  
Athens, Pa.

Monday, July 14

Report supplied by auction  
Reported receipts of 95  
cows, 15 bulls, 303 calves, 19  
top steers; Steers, feeder to  
heifers, 1 steer, 97 hogs, 15  
lambs, 21 sheep. Cattle  
market reported easier, calf  
market reported steady.  
Holstein Heifer Calves to  
187.50; Veal Calves to 97.00;  
Bobs, 90-110 lbs. 75.00-96.00;  
Bobs, 80 and down lbs. 60.00-  
68.50; Grassers & Feeders  
45.00-90.00; Lambs 55.00-  
60.00; Sheep 22.00-29.00;  
Hogs, 200-250 lbs. 38.00-46.50;  
Sows 32.00-38.00; Boars to  
27.50; Pigs 10.00-33.00;  
Heifers 46.00-53.50; Steers no  
top steers; Steers, feeder to  
heifers, 1 steer, 97 hogs, 15  
lambs, 21 sheep. Cattle  
Cows, utility 46.00-48.00, Top  
market reported easier, calf  
49.75; Cows, fat 42.00-44.00;  
Cows, medium 41.00-44.00;  
Cows, poor or small 38.00-  
40.00; Horses 550.00-680.00;  
Ponies 25.00-150.00; Goats  
14.00-36.00.

## Livestock market and auction news

### East Coast Carlot

Wednesday, July 16  
Report supplied by USDA  
Compared to Tuesday's  
close Prime special fed veal  
not well tested early;  
however, generally steady  
undertone indicated.  
Limited sales Good and  
Choice boning veal, nor-  
theastern suppliers, 2.00  
lower; unshipped generally  
steady with Monday's last  
test. Compared to last week,  
lamb and spring lambs  
mostly steady to 3.00 higher.  
Boneless beef 85 chem lean  
6.00 to 7.00 lower than last  
week's bulk.

**VEAL CARCASS  
HIDE ON  
45 Head**  
Prime (Special Fed) 180-  
240 lbs. few 160.00.

**BONING TYPE  
Good and Choice**  
Northeastern Suppliers:  
65-75 lbs. 114.00-116.00, all  
limited; 55-64 lbs. 112.00-  
114.00, all 2.00 lower; 45-54  
lbs. 110.00-112.00; 35-44 lbs.  
108.00-110.00; 34 lbs. down  
106.00-108.00.

Inshipped 71-80 lbs.  
118.00, all limited; 61-70 lbs.  
116.00, all generally steady  
with Monday; 51-60 lbs.  
114.00; 41-50 lbs. 112.00; 30-40  
lbs. 110.00.

**LAMB CARCASS  
Choice & Prime 3-4  
2 Loads**  
55-65 lbs. 143.00-146.00,  
mostly steady to 3.00 higher;

65-75 lbs. 143.00-146.00.  
**SPRING LAMB CARCASS  
Choice & Prime 3-4  
8 Loads**

55 lbs. down 143.00-146.00,  
mostly steady to 3.00 higher;  
55-65 lbs. 143.00-146.00.

**BONELESS BEEF  
10½ Loads**

90 pct chem lean, fresh  
125.00 part load; 85 pct chem  
lean, fresh 114.00-117.00, 6.00  
to 7.00 lower, 75 pct chem  
lean, fresh 96.00 weak.

**CURED AND PROCESSED  
MEATS  
13 Loads**

Skinned Hams: 16-20 lbs.  
76.00.

Semi-boneless Hams: 14-  
17 lbs. 98.50.

Boneless Hams: 13-17 lbs.  
122.00.

No. 1 Sliced Bacon  
Vacuum Pack, 1 lb pkg  
99.00.

Franks, 70 Beef, 30 Pork 1  
Lb. Pack: 87.00 firm.

### Danville Auction

Danville, Pa.  
Monday, July 14

Report supplied by auction  
**STEERS:** Good to Choice  
65.00-67.00; Standard to Good  
60.00-64.00.

**BULLS:** 55.10-63.25.  
**COWS:** Good to Standard  
45.00-46.50; Utility 41.00-  
44.00.

**CALVES:** High to Choice  
90.00-110.00; Good to Choice  
70.00-85.00.

**HOGS:** 42.50-44.60.

**SOWS:** 35.00-41.75.

**BOARS:** 30.00-33.75.

## Lancaster pork picnic slated

LANCASTER — The  
Lancaster County Pork  
Producers Association will  
hold its annual picnic at 6:30  
p.m. next Saturday, July 26  
at the West Lampeter Fair

Grounds.

All area pork producers  
are invited to the pig roast  
and program of games  
Bring a hot and cold dish and  
eating utensils.

## THE \$30,000 PHONE CALL

\$30,000 That's a lot  
of money. But with one phone call to  
me, you can find out how Chromalloy  
Farm Systems can save you that kind  
of money if you're now in the  
market for a complete forage  
processing and storage system.  
We can set you up  
with a tailor-made system which  
combines these key elements:

• Madison Silos

America's overwhelming choice for  
handling good corn silage

• Madison Nutri-Matic

your best buy in a bottom-  
unloading, atmosphere-controlled  
structure for haylage

• Madison Grain-O-Matic

for high-moisture grain  
processing and storage. Bottom-  
unloading and atmosphere-controlled

With the Chromalloy

Farm Systems System of Choice  
you'll do a better, more economical job  
of handling and feeding what you grow.

Give us a call for the whole money-  
saving story.

Making things better for you.



**FARM SYSTEMS  
CHROMALLOY  
DIVISION**

• Madison Silos • Nutri-Matic • Grain-O-Matic  
— STOP IN OR CALL US TODAY —

Littlestown, PA  
ATLEE REBERT  
717-359-5863

Lancaster, PA  
L. H. BRUBAKER, INC.  
717-397-5179

Silverdale, PA  
I. G. AG SALES  
215-257-5135

New Providence, PA  
DON R. NISSLEY  
717-786-7654

Myerstown, PA  
SWOPE & BASHORE  
717-933-4138

Mt. Joy, PA  
GALEN KOPP  
717-653-1567

Ephrata, PA  
TOM ZARTMAN  
215-267-6814

Pitman, PA  
CLIFF HERB  
717-648-3092

New Berlinville, PA  
ERB & HENRY  
EQUIPMENT  
215-367-2169

Pottstown, PA  
LEINBACH  
CONSTRUCTION CO.  
215-327-0310

Monroeville, NJ  
S. JOHNSON HURFF  
609-358-2565

Sussex, NJ  
WILLIAM SYTSEMA  
201-875-5449

Belvidere, NJ  
G. H. BUCHMAN  
201-475-2185

Elmer, NJ  
GEORGE COLEMAN  
609-358-8528

Milford, DE  
BENNETT MACHINE  
302-422-4837

Rising Sun, MD  
CECIL CO.  
DAIRY SERVICE  
301-658-6923

Frederick, MD  
GLADHILL TRACTOR  
301-663-6060

Galena, MD  
DUDLEY CHANCE  
301-928-3834

Mt. Sidney, VA  
BLUE RIDGE  
AGRI SERVICE  
703-248-1196

### Participating Agway Stores:

Avondale, PA  
215-268-8238

Taneytown, MD  
301-848-3225

York, PA  
717-792-2674

Wescosville, PA  
215-395-3381

Lancaster, PA  
717-394-0541

Temple, PA  
215-929-5264

Chambersburg, PA  
717-263-4197

Carlisle, PA  
717-243-4312

Dublin, PA  
215-249-3556

**DEALER INQUIRIES  
WELCOME  
717-464-4662**



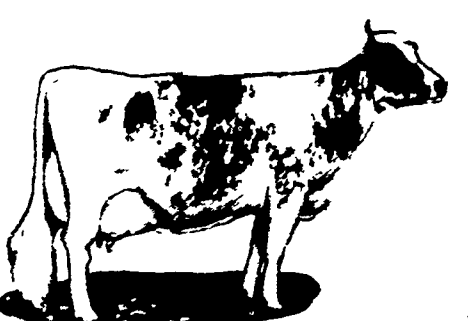
## WHATEVER HERD YOU HAVE

☐ HOLSTEIN ☐ AYRSHIRE  
☐ GUERNSEY ☐ JERSEY



## FEED FLORIN

DAIRY FEEDS  
TO YOUR HERD  
TO MAKE MILK AND MONEY



For a healthy, highly productive  
herd, FLORIN Enriched Dairy Feeds  
are scientifically formulated, tested  
and proven. Feed it regularly, and  
see the results ... more milk from  
cows, more money for you.



**WOLGEMUTH BROS., INC.**

MOUNT JOY, PA  
PH: 717-653-1451

