

State corn crop seen about same as 1979

HARRISBURG — Based on July 1 conditions, Pennsylvania farmers will produce less rye, oats, barley and tart cherries and virtually the same quantity of corn, as in 1979, according to the Pennsylvania Crop Reporting Service.

Increased production of winter wheat, pears, sweet cherries, apples and peaches is forecast.

Corn for grain is estimated at 115.6 million bushels, compared with 115.4 million

bushels last year. Yield is forecast at 94.0 bushels per acre compared with 95.0 bushels the previous year.

Winter wheat production is estimated at 8.2 million bushels, up two percent from a year ago, with acres for harvest at 250,000 compared with last year's 262,000.

The rye crop, at 416,000 bushels, is down nine percent, with 13,000 acres for harvest this year compared with 17,000 in 1979.

Oats production is ex-

pected to total 18.0 million bushels, down two percent from a year ago, with 340,000 acres to be harvested. The barley crop is expected to decline to 5.2 million bushels compared with 5.4 last year, a decrease of three percent

Barley acreage for harvest decreased nine percent to 105,000 acres.

The 1980 fall potato acreage for harvest is expected to total 22,000 acres, down 2000 acres from 1979. This year's com-

mercial apple crop, forecast at 555 million pounds, would be up four percent from last year. Peach production is expected to total 105 million pounds, up 17 percent from a year ago.

The sweet cherry crop is

expected to reach 1,100 tons, up 16 percent from the 950 tons harvested in 1979. The tart cherry crop is forecast at 5.6 million pounds, down 11 percent. Pear production is forecast at 3700 tons, up 32 percent from a year ago.

Holstein field day winners named

BY LAUREL SCHAEFFER
Staff Correspondent

SHARTLESVILLE — Senior members of the Junior Holstein Association sponsored their annual field day at Ro-Ria Farms, here last week. This annual event is geared to help prepare the junior members for the busy show season which is quickly approaching.

Junior members are divided into groups of three and are assisted by a senior member in preparing a heifer for show. Junior members are also given advice from the more experienced members in showmanship and later participate in showmanship classes as well.

This year twelve teams participated in the event. Judging the contest was George Merrill of Willow

Creek Animal Hospital, Leesport. Following are the results:

FITTING:

Team 1 - Duane Stump, Bernville; Lee Schlappich, Mohrsville; Scott Troutman, Myerstown; and Scott Miller, Hamburg, advisor. Team 2 - William Leshner, Bernville; Ann Kopfer, Fleetwood; James Wagner

Fleetwood; and Karen Sattazahn, Womelsdorf, advisor. Team 3. Diane Troutman, Myerstown; Micnele Christman, Shartlesville; Jimmy Younker, Fleetwood; and Bill Zollers, Mertztown, advisor.

Showing 8-10 year olds:

1. Kirk Sattazahn, Womelsdorf; 2. Brian Herbert, Fleetwood; 3. Jim

Blatt, Robesonia.

Showing 11-12 year olds:

1. Gary Bicksler, Richland; 2. Lee Schlappich, Mohrsville; 3. Lynn Krick, Fleetwood.

Showing 13-14 year olds:

1. Scott Troutman, Myerstown; 2. Charles Seidel, Lenhartsville; Tammy Schlappich, Mohrsville.

Meat and livestock statistics

WASHINGTON, D.C. — The tenth annual edition of "Meatfacts", a statistical summary of key information concerning livestock and meat, was published on July 10 by the American Meat Institute.

The 28-page report is a compact, yet comprehensive, statistical

survey of the U.S. meat industry.

Major USDA and AMI data in chart and graph form concerns livestock numbers; slaughter and meat production; farm cash receipts from livestock; consumption and prices; processed and canned meat production; employment, earnings, sales, and costs of meat packers:

"A major value of Meatfacts is the portrayal of trends, such as the growing impact of the American livestock and meat industry on foreign trade," says C. Manly Molpus, AMI president.

Meatfacts also documents

the cyclical low of cattle on American farms in 1979, the significant increase in hog numbers and the expected record hog marketings in 1980.

Molpus says, "The American consumer cannot immediately look forward to more steaks and hamburgers as herd rebuilding takes place in the '80's. He adds that because of record high hog marketings, there will be a plentiful supply of pork."

Meatfacts is available from the American Meat Institute, P.O. Box 3556, Washington, D.C. 20007. Single copies are \$1.00 each; quantities of two or more are 55 cents each.

Patz

★ Barn Cleaners, Manure Pumps, Manure Stackers, Silo Unloaders, Bunk Feeders, Feed Conveyors

MARVIN J. HORST

DAIRY EQUIPMENT

1950 S. 5th Avenue, Lebanon, Pa. 17042
Phone: 717-272-0871

THE NEW IRON HORSES

MORE HORSES MORE IRON



More usable power at the PTO, drawbar, 3-point hitch, and remote outlets

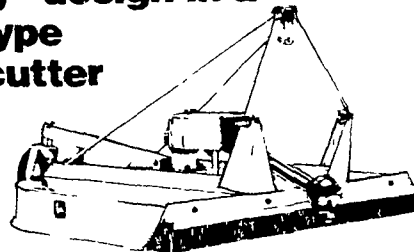
The 4840 above at 180 hp is the biggest of the NEW IRON HORSES. But it shares all its family traits with four smaller brothers: the 155-hp 4640, 130-hp 4440, 110-hp 4240, and 90-hp 4040. They all have the same build — husky. Stop in for details on their individual engine, chassis and power train measurements. We'll be happy to answer all your questions on the tractors with more horses and more iron.

Shred stalks into bits and pieces



Stop in and inspect our John Deere 27 Flail Shredder. We'll show you the rugged knives (2 1/2 inches wide 5/16 inch thick) that are thicker and heavier than those on most shredders. And you can choose tungsten carbide edges to give extra long life. Unique quadruple seals keep dirt out of the rotor bearings. And there's more — let us show you the 27 soon.

506 and 606 feature Unibody™ design in a utility-type rotary cutter



If you're in the market for a really tough utility cutter, stop by and take a look at the 5 foot 506 or 6 foot 606 Unibody rotary cutters. Multi purpose blades and a "stump jumper" blade holder are only a few of the many heavy duty features you'll like in these new cutters.

FINANCE JDFP - NO FINANCE CHARGES UNTIL MARCH 1, 1981

LANDIS BROS. INC.
Lancaster, PA
717-291-1046

ADAMSTOWN EQUIPMENT INC.
Mohnton RD2, PA 19540
(near Adamstown)
215-484-4391

PIKEVILLE EQUIPMENT INC.
Oyster Dale Road
Oley RD2, PA
215-987-6277

NEUHAUS'ES INC.
RD2, York, PA
1-83 Loganville Ext 3
717-428-1953 or
235-1306

SHOTZBERGER'S EQUIPMENT
Elm, PA
717-665-2141

A.B.C. GROFF INC.
New Holland, PA
717-354-4191

ROBERT E. LITTLE INC.
Zieglerville, PA
215-287-9643

KERMIT K. KISTLER INC.
Lynnport, PA
215-298-2011

FOSTER EQUIPMENT SALES
Elmer, NJ
609-769-1535

M.S. YEARSLEY & SONS
West Chester, PA
215-696-2990

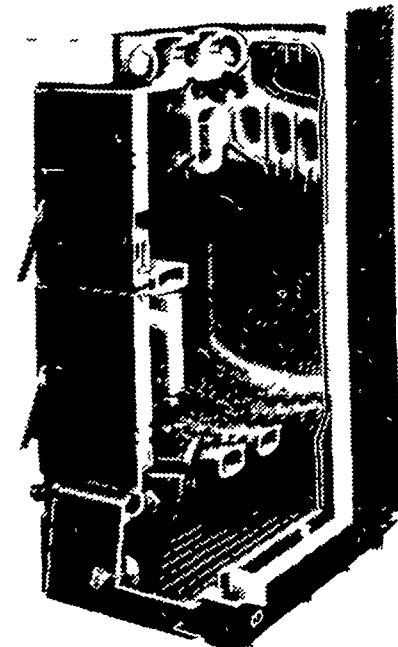
AGWAY INC.
Chapman Equipment
Center
Chapman, PA
215-398-2553

I.G. SALES
Silverdale, PA 18962
215-257-5136

Convert your present Hot Water Heating System to burn Wood or Coal!

Find out why we're #1 in the World!

- Adds on to your existing Hot Water Heating System.
- ASME Approved.
- Burns Wood or Coal
- Several Sizes
- Cast Iron Construction.
- Wet Base. (Water Grates)
- Converts to Oil



Buderus

Dealer Inquiries Invited!

WOOD HEAT

Rt. 212, Pleasant Valley,

Quakertown, Pa. 18951

Ph. (215) 346-7894

Open Mon & Fri 8-8; Tues. & Thurs. 8-5; Sat. 8-5.
Closed Wednesday & Sunday