

Five named Keystone 4-H winners in Lebanon

LEBANON — Years of hard work in 4-H have paid off for five Lebanon County 4-H'ers. Named as Keystone Winners were Melissa Weaver, Michelle Noll, Sue

Bomberger, Bev Hale, and Beth Ann Shiner. According to Linda Rohrbach, extension 4-H agent, being a Keystone winner is "a great honor". 4-

H Keystone winners are finalists in the State contest. One delegate is chosen in each category to represent PA at the National 4-H Congress in Chicago.

Melissa, 18, daughter of Nancy Weaver, Jonestown, is a Keystone winner in both Forestry and Home Environment. She is a member of the Natate Club where her project center on flower arranging, wildflowers, and other aspects of horticulture. Her activities have included Camp Teen Council, PA 4-H Leadership Congress, National Junior Horticulture Association, Citizenship - Washington Focus, and State 4-H Days. She will be a sophomore at Elizabethtown College.

Michelle, 16, a daughter of Marguerite and Melvin Noll, Lebanon, will be considered for state honors in the outstanding 4-H'er category. She is a member of the Mill Acres 4-H Club where her projects include Clothing, horticulture, leadership, and foods. Her activities include Teen Council, Olympic Day,

Regional and State 4-H Days, National Junior Horticulture Association, and State Capital Days. Michelle will be a Senior at Cedar Crest this fall.

Sue, 18, daughter of Alta and Donald Bomberger, Annville, is a Keystone Winner in the Gardening and Agriculture Categories. This year Sue was a State winner in the Outstanding 4-H'er Category and therefore, participated in the Ohio 4-H Leadership Congress last month. Sue is a member of NoSoAnn Dairy and South Mountain Clubs. In addition, she has been active in the Lebanon Area Fair, Regional and State 4-H Days, the PA Farm Show, and PA 4-H Leadership Congress. Sue is a junior Botany major at George Washington University.

Bev, 18, is a daughter of George and Beverly Hale, Lebanon. Bev, a winner in the Consumer Education and Home Management Categories, is now a member of the Mill Acres Club. Active in Teen Council, Olympic Day, Camp,

Regional and State 4-H Days, Bev will be a sophomore Pharmacy major at Purdue University.

Beth Ann, 15, is a daughter of Gail and Dan Shiner, Myerstown. She is a finalist in the Outstanding 4-H'er Category. Beth Ann is a teen leader in her club, the Myerstown Raiders. Her projects center on Clothing, Foods, and other Home Economics skills. Beth Ann's activities include

Regional and State 4-H Days, Fashion Revue, State Capitol Day, PA 4-H Leadership Congress, and the Lebanon Area Fair. Beth Ann will be a junior at Elco High School.

JOIN
4H

Attention
Beef & Pork Raisers

CUSTOM BUTCHERING



HESS' BUTCHER SHOP

2635 Willow Street Pike
Willow Street, PA

717-464-3374

—We Process the Old Fashioned Way—

- Pudding
- Hams
- Bologna
- Scrapple
- Bacons
- Dry Beef

We also Specialize in Beef
For Your Freezer, Sides of Pork,
Sides of Beef.

Even our directors make personal calls.

At Hamilton Bank one of our primary objectives is to serve and help preserve the family farm.

We still believe that agriculture is the backbone of America, and the family farm is the cornerstone of agriculture in our area.

When we work together, through a relationship of mutual trust, we can all continue to move ahead. We can continue to keep agriculture strong.

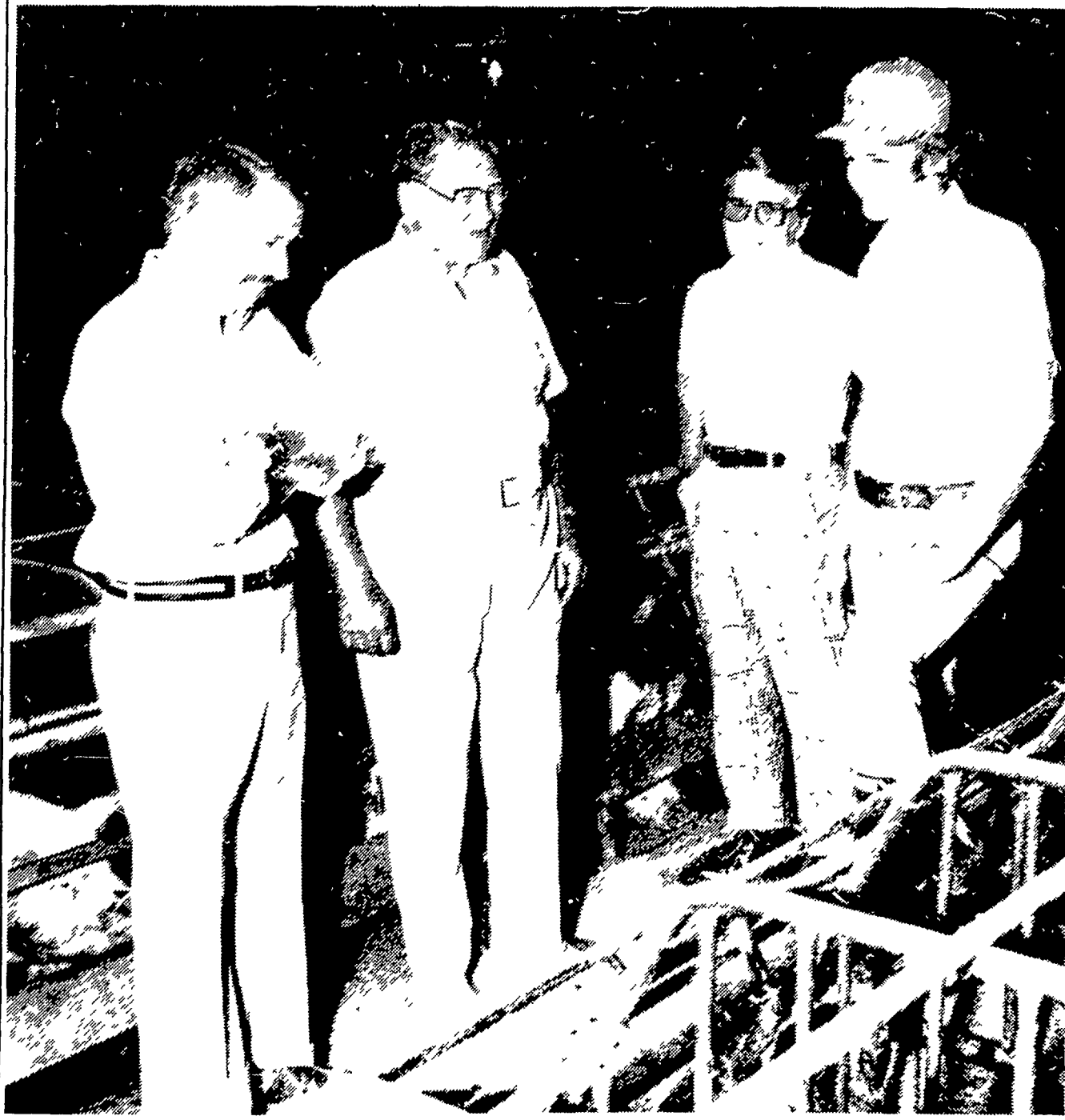
Contact your local office for complete details on Hamilton Bank Agri-Finance Program.



HAMILTON
BANK

Formerly National City Bank

Brent Shunk, C. Abram Snyder, Members of Lancaster Regional Advisory Board of Directors. W. Douglas Darmstaetter, Member of Hamilton Bank Board of Directors and the Lancaster Regional Advisory Board of Directors with Robert D. Slearer, Mt. Joy R.D. #1 in his 150 sow swine unit.



It pays to advertise. Among poultry promotion signs on the road to Ko-Ka-Le-Ko Egg Ranch is this catchy advice.

How to control

(Continued from Page A21)

any money back," Leiminger said.

Poultry brings in a continuing, almost immediate return and it helps that monthly fact of life in any business called cash flow.

The first chicken house was put up only 14 years ago. Today, the ranch has 90,000 layers and 90,000 pullets.

Eggs are sold at the ranch, and are marketed elsewhere.

In addition, the total operation includes some 2,200 hogs and 800 beef cattle.

The feed mix facilities will be used for both the hogs and chickens.

Four bins in the feed mixing complex include 60,000 bushels of wet storage, 12,000 bushels of dry storage and a 1,700-bushel batch dryer. The dryer has a false bottom to provide total aeration.

It is possible to mix feed right out of the dryer into the mill.

Leiminger points out that it has already been proven to him that bulk purchases and mixing his own feed pays.

"We have been using our own hammer mill," he says.

"Back when hogs were selling for 29 cents, I was still able to break even."

But the beef phase of the operation is not going to be forgotten. Just like the eggs, beef is retained right off the farm.

"With our terrain, we can only grow grass in some areas," he explains.

"It's either high and dry or low and wet."

The Reed's Ca. grows mighty tall in some areas and it is put through the cattle.

The custom mixing facilities were fabricated in the shop of Earl Light, of Palmyra.

J. M. HORST

SERVICE CO.
BOX 231, QUENTIN, PA



DAIRY EQUIPMENT
TANKS — PIPELINE
VACUUM PUMPS — ETC.

PHONE: 717-274-1242
24 HOUR SERVICE

Your Complete Systems Dealer