

## Vermont 4H'ers visit Lebanon County

**SCHUYLKILL HAVEN** — Fifty Lebanon Countians are exploring their 4-H Camp in the Poconos this week as they participate in the annual Lebanon-Schuylkill 4-H Camp Shehaqua.

According to Linda Rohrbach, extension 4-H agent, the camp will provide "a balanced program of crafts, folk dancing, nature study, and fun and friendly competition."

Planned activities include a water carnival, a counselor hunt, a hike to Lake Harmony, and creek stumping.

Camp counselors include: Greg Allwein and Jerry Boyer, Lebanon; Holly Reyner, Palmyra; Clint LeRoy, Annville; Diane Smith and Fawn Showers, Rextmont; Pat Heilinger, Newmanstown; and Jon Arnold, Schaefferstown.

4-H Campers are between the ages of eight and fourteen. Activities were planned by the camp counselors who are 4-H teens, fifteen and older. The camp is manned by adult



Barbie helps little Karen Lertz lug a milking unit down the aisle.

paid and volunteer staff. 4-H camping is only one phase of the youth development program. 4-H

membership is open to all Lebanon County youth between the ages of eight and nineteen.



Brenda Lertz shows Barbie her style in hooking up the pipeline milkers on one of the Lertz' registered Holsteins.



## Weather extremes cause global crop damage

**WASHINGTON, D.C.** — Crop development in many areas of the world is suffering from either excessive wet weather or drought, according to a report today from the Joint Agricultural Weather Facility. Areas of concern include the USSR, China and Canada.

**SOVIET UNION.** Some harvesting of winter grains began as fair weather continued over southeastern European USSR this week.

In the Ukraine, however, wet weather may have damaged maturing winter grains. Crop development in the western half of European USSR was further delayed

by below-normal temperatures, but in the southeastern fringe of the grain area, hot dry air from the desert — known as a "sukovei" — may have hurt some spring grain production.

**CHINA.** Excessive rains continued this week. Wet weather caused problems in northern parts of the wheat belt where the harvest is still in progress. As the harvest of the first rice crops nears, most rice producing areas in southern coastal provinces received near-normal rainfall.

**CANADA.** Despite some wet weather, effects of the

recent drought in southern portions of the wheat belt in the Prairie provinces were severely felt last week.

Crops in Saskatchewan were reported in fair to poor condition, and in Manitoba, crop conditions have deteriorated so badly that fields have been plowed under or used for cattle grazing. In Alberta, the crop season continues on schedule, further benefitted by the recent showers.

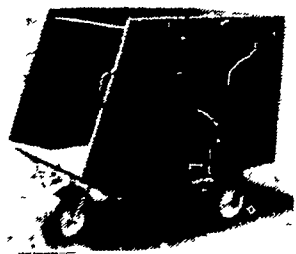
**SOUTH AMERICA.** A light frost was reported last week

in the coffee growing area of northern Parana State in Brazil. The cold spell did not damage coffee trees

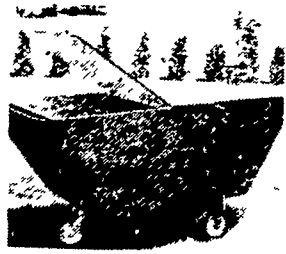
**EUROPE.** A third consecutive week of wet weather benefitted some areas in the north, but interfered with plant development over a substantial portion of growing areas for winter grains and oilseeds.

**SOUTHERN ASIA.** Monsoon rains continued over most of India and advanced into Pakistan last week

### SILAGE AND FEED CARTS



34" Wide, 62" Long, 53" high, capacity (to feed 35 to 40 Cows)  
16" Ball Bearing wheels  
For very easy handling



28" wide, 60" long, 35" high, capacity 600 lbs  
Choice of 10" pneumatic or semi-pneumatic wheels

Many Other Sizes Available

We Also Manufacture Swivel Casters for 16", 12" and 10" wheels  
MANUFACTURED AND DISTRIBUTED BY  
**SCENIC ROAD FARM SUPPLY**

3539 Scenic Road  
Gordonville, Pa 17529  
2½ Mi Southwest of New Holland,  
1½ Mi N of Intercourse

— AUTHORIZED DEALERS —

**AARON S. GROFF & SON**  
RD #3, Ephrata, PA 17522  
Phone (717) 354-4631

**IRVIN J. PEACHEY**  
Star Route, Box 35  
Bellefonte, Pa 17004  
Phone (717) 483-6714

**LAPP SHARPENING SERVICE**  
Gibble Road,  
Route 2, Box 276  
Myerstown, Pa 17067

**ATLEE F. REBERT**  
RD 2 Littlestown, PA 17057  
Phone (717) 359-5863

— DELIVERIES AVAILABLE —

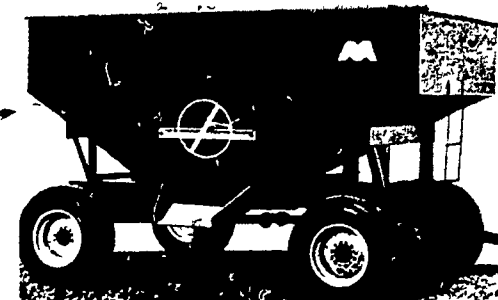
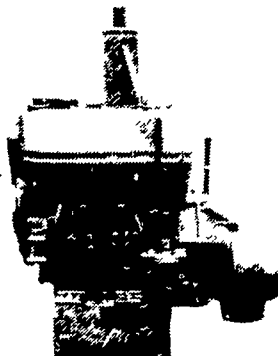


1-2-3-4-6  
CYLINDERS  
FROM  
20 TO  
300 HP

★ Adaptable to most applications with or without clutch reduction

**MODEL H.R. 292**  
With Clutch  
Reduction 27 H.P.

★ Will Install In Skid Loaders, Balers, Forage Harvesters, Etc.



165 Bushel Gravity  
**UNLOADING BOX**  
With 6 Ton Wagon

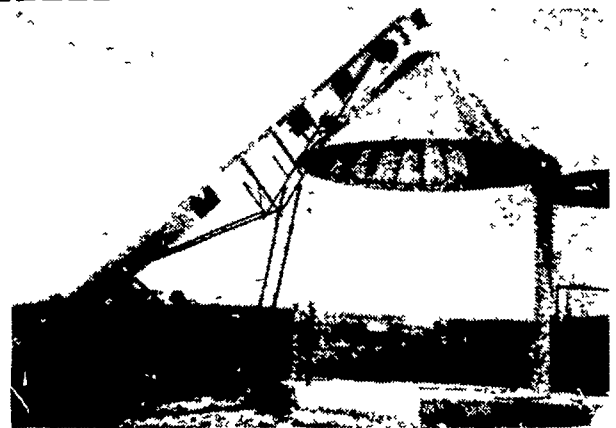
**\$825** Less Tires

### SALES & SERVICE MILLER'S REPAIR

1 Mile North of Bird-in-Hand  
8 Miles East of Lancaster  
RD1, Bird-in-Hand, PA PH: 717-656-9013



**WISCONSIN ENGINES**  
Sales & Service



**ZIMMERMAN PORTABLE ELEVATORS**  
Will Carry Your Corn & Hay  
28 ft. . . \$1050  
32 ft. . . \$1095  
★ 36 ft. and 40 ft. also available

**BEHLEN CORN CRIBS**  
1085 Bu. . . \$850  
1500 Bu. \$1075