

Berks County DHIA Monthly Report

BERKS COUNTY DHIA May 1980

The following is the Berks County DHIA report for the month of May, 1980. Only those herds averaging 1.5 pounds per day or over are listed.

OWNER	BREED	NO. COWS	% DAYS IN MILK	LBS. MILK	% FAT	LBS. FAT
Heindel Farms Inc.	3	238	99.8	65.6	4.0	2.65
Y Creek Haven Fm	00	55.0	124.1	65.5	3.7	2.43
Good Bros	00	55.0	99.3	62.5	3.8	2.39
J Hershey Myer	B3	46.0	96.1	58.7	3.9	2.28
Junge Farms	3	38.4	95.6	56.0	4.1	2.28
Harvy M Weaver	B3	48.1	95.3	58.0	3.8	2.23
Bruce Reigel	00	41.0	113.7	57.1	3.9	2.23
Stephen J Janos	3	38.0	90.8	60.4	3.6	2.18
Wilmer R Martin	00	30.0	96.0	56.9	3.8	2.18
Junge Farms	3	37.0	85.8	52.4	4.1	2.17
Mervin Brubaker	B3	69.7	89.7	58.3	3.7	2.15
BRB Farm	B3	54.0	94.6	56.2	3.8	2.14
C & T Kissling	3	62.0	90.6	64.4	3.3	2.11
Glen High	B3	55.5	89.9	54.5	3.9	2.10
Arian Krick	B3	61.6	90.7	55.3	3.8	2.10
C & T Kissling	3	62.0	90.3	59.7	3.5	2.08
Jaimore Farm	B3	62.0	92.3	53.4	3.8	2.05
Roy Hoppes	B3	34.7	93.4	54.0	3.8	2.04
Linden Loch Hol	3	52.2	91.3	59.9	3.4	2.03
Swatara Dairy Farm	3	88.7	84.8	48.8	4.1	2.01
W Dreibelbis Jr	B3	44.7	88.6	54.8	3.7	2.01
Show Top Farms	3	138.0	91.2	50.3	4.0	1.99
Mark A Wolfskill	3	76.8	85.0	51.4	3.9	1.99
Geo Troutman Jr	B3	67.0	94.7	54.8	3.6	1.99
R & K Sanner	B3	68.7	90.3	50.4	3.9	1.97
Mertz Brothers	B3	42.2	87.4	55.5	3.5	1.96
A D Stoltzfus	B3	100.0	90.3	49.9	3.9	1.96
Norman Z Nolt	3	36.0	85.3	53.2	3.7	1.96
H & G Schuler	3	43.3	85.0	48.6	4.0	1.94
C Plushanski	3	95.6	91.3	50.8	3.8	1.93
Harold G Heck	3	71.7	86.5	53.5	3.6	1.92
Harvey Krill Jr	B3	43.0	89.5	49.3	3.9	1.92
Yost Brothers	B3	111.7	88.6	55.6	3.5	1.92
Larry E Phillips	B3	35.7	89.7	53.8	3.5	1.90
Roger S Buch	3	48.1	86.4	53.4	3.5	1.89
George E Moyer	3	85.9	93.3	46.3	4.1	1.88
Bendy Brook Farm	3	45.0	88.9	52.9	3.6	1.88
Donald Burkholder	G3	78.6	88.6	47.6	3.9	1.88
Donald B Duncan	B3	88.8	88.3	49.5	3.8	1.87
Retland Farm	3	47.0	91.7	51.0	3.7	1.87
C & F Stricker	G3	44.0	82.7	49.4	3.8	1.87
Ernest O Miller	B3	190.8	90.4	51.8	3.6	1.86
John C Bartsch	B3	52.7	94.5	49.5	3.8	1.86
Hylark Farm	3	79.0	94.5	49.9	3.7	1.85
Robert T Bowman	B3	39.4	92.0	49.7	3.7	1.85
W Dreibelbis Jr	B3	46.0	89.8	51.4	3.6	1.85
John H Stump	3	44.0	85.3	50.9	3.6	1.84
Ontelynn Acres	B3	97.2	88.3	47.5	3.9	1.84
R L Sattazahn	B3	100.0	95.7	51.5	3.6	1.83
Win-Dale Farm	B4	39.1	89.1	32.1	5.7	1.83
Blue Mtn Academy	B3	105.7	97.7	54.8	3.3	1.83
L G Stoltzfus	3	80.5	90.8	58.4	3.1	1.82
Frank G Gromlich	3	64.3	87.4	47.6	3.8	1.82
F M Browns Sons	B3	87.0	92.7	51.6	3.5	1.81

William C Adams	3	83.1	87.5	45.4	4.0	1.81
C C Sattazahn	B3	86.0	93.5	49.5	3.7	1.81
Charles W Wagner	B3	41.9	93.0	47.4	3.8	1.80
Robert E Kopter	B3	42.0	90.3	55.6	3.2	1.80
Vernon G Good	B3	37.6	97.4	43.2	4.1	1.79
R B Burkholder	B3	42.9	93.4	46.6	3.8	1.79
Robert Dreisbach	4	61.4	91.2	39.8	4.5	1.78
Heindel Farms Inc	1	28.1	88.4	42.2	4.2	1.78
Daniel J Harnish	B3	92.8	80.8	47.8	3.7	1.77
William Howarter	3	78.8	86.6	46.7	3.8	1.77
R & C Wieder	B3	40.0	91.4	50.3	3.5	1.77
K L Stutzman	B3	41.5	82.8	45.1	3.9	1.77
Took A Miracle Fm	B3	49.9	95.7	45.7	3.9	1.76
M J Stutzman	B3	47.9	96.0	44.6	3.9	1.75
Charles D Moyer	B3	119.6	82.8	45.1	3.9	1.75
Robert Dreisbach	4	63.7	91.6	40.6	4.3	1.75
Clarence B Kulp	B3	70.7	91.0	48.7	3.6	1.75
Joseph F Walters	G3	61.0	91.1	44.0	4.0	1.75
Ken R Wolfskill	B3	42.8	81.5	47.7	3.7	1.75
Richard W Hoppes	B3	59.0	99.7	50.5	3.4	1.74
Adin Oberholtzer	B3	76.0	82.5	47.6	3.7	1.74
Glenn E Hoffman	G3	26.0	100.1	45.6	3.8	1.74
Ray E Bicksler	3	45.7	82.5	45.0	3.8	1.73
J M Stutzman	B3	39.0	91.8	53.8	3.2	1.72
E K Siegfried	3	64.8	94.1	44.3	3.9	1.72
Ray W Seidel	B3	32.0	95.3	44.4	3.9	1.72
Scattered Acres	B3	122.9	88.6	48.0	3.6	1.72
Troutman & Sons	3	106.7	85.9	45.3	3.8	1.71
Scattered Acres	B3	120.8	86.1	46.3	3.7	1.71
Steven E Wagner	B3	26.0	87.8	44.2	3.9	1.71
Ker Min Farms	3	73.9	84.5	45.7	3.7	1.70
Alton Rohrbach	B3	37.0	88.2	44.8	3.8	1.70
Mat Mar Farms	B3	85.4	87.8	45.9	3.7	1.69
Lynnacre Dietrichs	3	81.4	87.9	46.4	3.6	1.69
Barry Burkholder	B3	47.2	79.1	44.4	3.8	1.69
Reu Hal Farms Inc	3	18.0	91.5	56.3	3.0	1.68
Larry L Mertz	B3	86.5	84.6	42.5	4.0	1.68
Arthur Schlappich	B3	53.0	88.7	46.6	3.6	1.68
E D Leatherman	B3	70.6	87.0	44.3	3.8	1.68
Irvin G Weaver	G3	46.5	85.3	44.8	3.8	1.68
P & T Werley	B3	103.2	89.8	42.2	4.0	1.67
Wilson Balthaser	B3	71.4	83.6	46.0	3.6	1.67
Louis E Moyer	3	54.0	89.9	44.4	3.7	1.66
James H Adam	B3	148.4	92.8	40.7	4.1	1.66
Ralph W Haag	G3	42.0	86.0	42.9	3.9	1.66
Way Har Farms	B3	103.6	86.8	46.5	3.6	1.66
Earl W Latshaw	B3	55.9	94.8	45.5	3.6	1.66
John F Snyder	B3	47.8	81.4	44.8	3.7	1.65
J Rosenbaum/Son	B3	76.0	97.5	44.3	3.7	1.65
Wilmer Dreibelbis	B3	54.6	86.6	43.1	3.8	1.63
Charles W Lamm	B3	93.7	85.7	43.8	3.7	1.63
Robert Yanos	B3	54.2	91.7	42.9	3.8	1.63
Zahncroft Farm	3	45.7	82.9	49.1	3.3	1.62
Charles W Lamm	B3	92.7	83.7	45.9	3.5	1.62
Took A Mircle Fm	B3	43.2	95.5	45.7	3.5	1.62

Adin Oberholtzer	B3	76.6	79.3	42.6	3.8	1.62
Ernest C Hoffman	3	53.8	82.2	43.9	3.7	1.61
Richard Hoffman	B8	70.6	87.0	43.6	3.7	1.61
Robert Sittler	B3	38.6	87.9	44.7	3.6	1.61
Richard Hoffman	B8	69.0	88.5	43.1	3.7	1.60
Pinnacle Vw Dairy	B3	49.7	87.3	43.3	3.7	1.60
Kenneth Zook	B3	44.3	83.5	46.9	3.4	1.59
Raymond B Nolt	B3	78.8	87.8	44.7	3.5	1.58
Luke H Kurtz	B3	37.6	91.6	44.0	3.6	1.58
Russell H Haas	G3	50.3	84.3	41.6	3.8	1.57
Way Har Farms	B3	98.8	82.6	44.1	3.6	1.57
K & D Dietrich	B3	32.0	88.6	45.4	3.5	1.57
O & T Kleinsmith	B3	33.0	89.8	47.5	3.3	1.57
Donald E Landis	3	128.9	92.4	41.6	3.8	1.56
Earl R Hafer	B3	97.3	95.2	40.9	3.8	1.56
Teen Chal Farm	B3	83.2	84.0	38.4	4.1	1.56
David P Herbert	3	51.6	90.0	41.2	3.8	1.55
Vista Grande Farm	3	84.0	87.2	43.4	3.6	1.55
Daview Farm	3	42.5	84.7	41.1	3.8	1.55
David Y Knauer	B3	53.4	81.3	39.7	3.9	1.55
Lynn E Stoudt	B3	65.9	86.8	45.2	3.4	1.54
Herb Top Farms	B8	24.8	90.9	37.9	4.0	1.53
Kenneth Zook	B3	45.4	84.3	47.5	3.2	1.53
Harry A Lutz	G3	26.7	97.9	35.7	4.3	1.52
Carl E Hollenbach	2	51.9	85.0	34.2	4.4	1.52
Herb Top Farms	B8	24.0	90.6	38.2	4.0	1.51
Daview Farm	3	41.4	82.8	40.0	3.8	1.51
Raymond A Seidel	3	35.7	73.6	38.1	4.0	1.51
Alfred E Schmidt	3	52.5	89.7	40.5	3.7	1.50

(Turn to Page C17)

HOG PRODUCERS!

Get Top Price for
Your Hogs at
New Holland



Sold in sorted lots the auction way. See them weighed and sold and pick up your check.

SALE EVERY MONDAY - 8:00 A.M.

NEW HOLLAND SALES STABLES, INC.

Phone 717-354-4341

Daily market Report - Phone 717-354-7288

Abe Diffenbach, Manager

BALANCED DESIGN ELECTRIC POWER SYSTEM

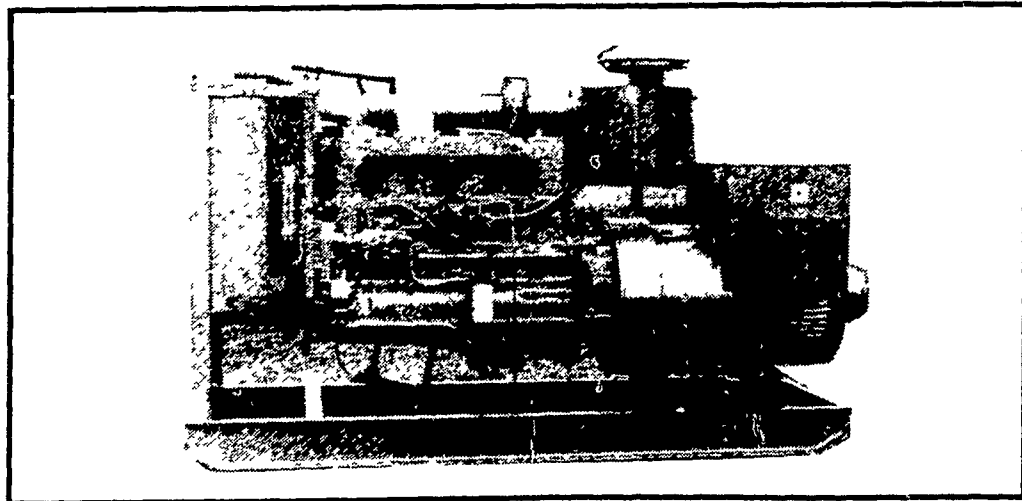
Designed and Manufactured by,
MARTIN MACHINERY

For Emergency or Prime Power 1 to 1000 KW

BALANCED DESIGN to Give You Peak Performance

for Your Application:

• FARM • INDUSTRIAL • COMMERCIAL • RESIDENTIAL



210 KW Cummins Diesel

USED GENERATORS AVAILABLE

Engine Sets

200 KW Allis Chalmers **SOLD**
25 KW Allis Chalmers gas
133 KW Detroit diesel
3.5 KW Onan gas 1800 RPM

PTO Units

25 KW Fidelity with trailer
25 KW Winpower 3 pt. hoc **SOLD**
25 KW Kurz & Root with trailer
(Brushless)
15 KW Generac with tr **SOLD**
15 KW Surge without trailer
(2) 25 KW Onan
25 KW Katolight

**We Also Have Special Designed Switch Gears
Manufactured by Westinghouse to Our Specifications**

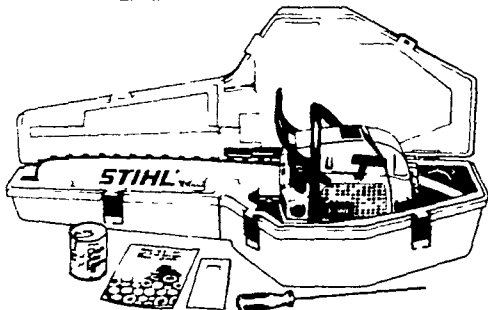
MARTIN MACHINERY

P.O. BOX 35, MARTINDALE, PA 17549

Bus. Ph: 215-445-4800

Res. Ph: 215-267-7771

A STRONG CASE FOR BUYING THE STIHL 028 WB RIGHT NOW.



Buy a Stihl 028 WB and get a strong, double walled carrying case, 8 oz can of oil, file and plastic handle, firewood booklet and plastic wedge. A \$37.00 value all for only \$5.00 more than the saw's regular suggested retail price. Get it now before the case is closed.

STIHL
The World's Largest Selling Chain Saw

FREE DEMONSTRATION
Chain Saw - Concrete
& Metal Saw Rentals

**STOLTZFUS
WOODWORK**

RD Gap PA Box 183
1 Mile North Rt 897 From Gap

**A & B SALES
& SERVICE**

2 Miles South of Rt 23 Along 772
Thru Monterey RD 1 Ronks PA

**WES STAUFFER
SMALL ENGINES**

RD 3 Ephrata PA
Phone (717) 733 9174
Ephrata Exit New Rt 222
1/2 Mile West on Rt 322
Turn left onto Pleasant Valley Rd

**NORMAN H.
ZIMMERMAN**

Myerstown RD 2
Phone (717) 866-4695
1/2 mile west Myerstown West Main St