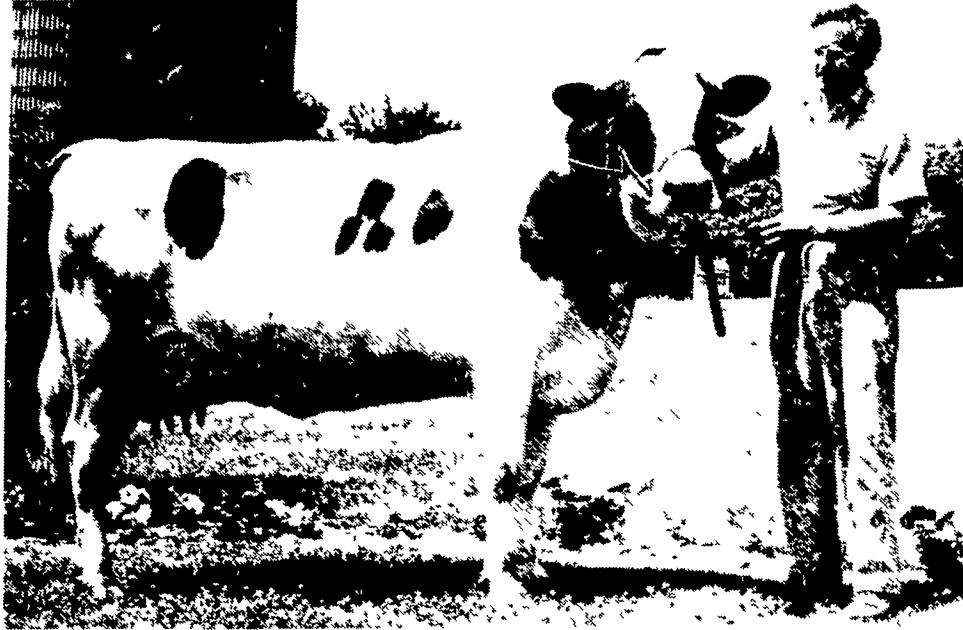


Select Sires acquires Crouse bull

SCHOENECK — Len-Lyn Jerry Heston-ET, a young bull bred by Galen Crouse, of Schoeneck, Lancaster County has been acquired by Select Sires, a federation of farmer-owned and controlled artificial insemination cooperatives headquartered at Plain City, Ohio. Based on his outstanding pedigree, this bull calf has been selected as one of only 100 Holstein bulls from throughout the United States to enter Select Sires' Program for Genetic Advancement (PGA) sire sampling procedures in 1980.



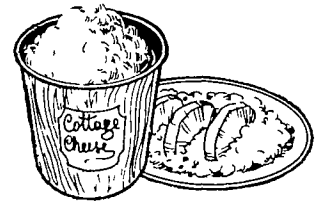
The dam of Len-Lyn Jerry Heston-ET has met the high milk production and type conformation standards required by Select Sires. Windy-Mont Matt Kathy has made records to 23,770 pounds of milk and 1,119 pounds of fat at three years and six months of age. In addition she has been officially scored Excellent - 90 by a Holstein Association classifier

The sire of Len-Lyn Jerry Heston-ET is Eng-Amer Ivanhoe Jerry. This well-respected sire has the ability to pass on top genetics to his offspring as evidenced by his latest progeny proof. Based on USDA information from January 1980, he has a Predicted Difference of +1,474 pounds of milk worth an additional \$143 with a 80 percent Repeatability. His latest Predicted Difference

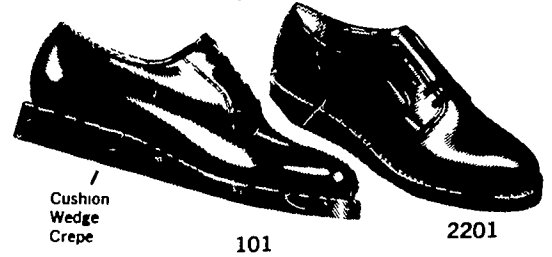
for Type from the Holstein Association is +2.00 with a 72 percent Repeatability

This young bull is bred for fancy type and high production. Len-Lyn Jerry Heston-ET is sired by "Jerry", one of Ivanhoe Star's best sons, and out of a high producing Fond Matt daughter with over 1000 pounds of butterfat at two, three, and four years of age. She completes three generations of Excellent cows and has a daughter that recently became the fourth generation. High test is also being exhibited throughout the maternal line. His pedigree indicates Len-Lyn Jerry Heston-ET will sire tall, dairy cattle with exceptionally fine udders and wide level rumps

Webotuck Matt Lilly, a four-year-old classified at Excellent 93, was purchased for \$35,000 by Galen Crouse, Schoeneck, at the 95th Convention of the Holstein Association of America last week in Nashville, TN. Bred to Round Oak Rag Apple Elevation, she's due to calve in November. Her last year's bull by Straight Pine Elevation Pete went to Eastern Breeders, Ontario, Canada. Following calving, she will likely undergo super ovulation about January. Lily came from Argale Holsteins, Selma, Calif. She's projected at 21,966 lbs



Plain or Safety Steel Toe



Cushion Wedge Crepe

101

2201

Hardworking Feet Deserve CUSHION-WEDGE CREPE COMFORT

STYLE 101

WIDTH	AAA	AA	A	B	C
SIZE	10-18	9-15	8-15	7½-18	6½-14
WIDTH	D	E	EE	EEEE	
SIZE	5-16	6-14	6-14	5-13	

STYLE 2201 Safety Toe

WIDTH	C	D	E	EEE
SIZE	8½-12	7-13	7½-11	8-11

RED WING



WAYNE'S DRY GOODS

271 W. Main St.

Kutztown

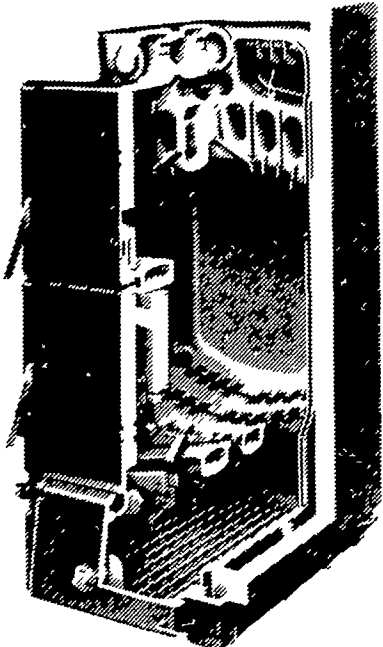
Phone (215) 683-7686

Free Parking at Rear of Store

Convert your present Hot Water Heating System to burn Wood or Coal!

Find out why we're #1 in the World!

- Adds on to your existing Hot Water Heating System.
- ASME Approved.
- Burns Wood or Coal
- Several Sizes
- Cast Iron Construction.
- Wet Base. (Water Grates)
- Converts to Oil



Buderus

Dealer Inquiries Invited!

WOOD HEAT

Rt. 212, Pleasant Valley,

Quakertown, Pa. 18951

Ph. (215) 346-7894

Open Mon & Fri 8-8, Tues & Thurs 8-5 Sat 8-5
Closed Wednesday & Sunday

TEMP-MATIC... THE NEWEST INNOVATION IN BULK MILK COOLING



The Tank with Features no other tank can offer

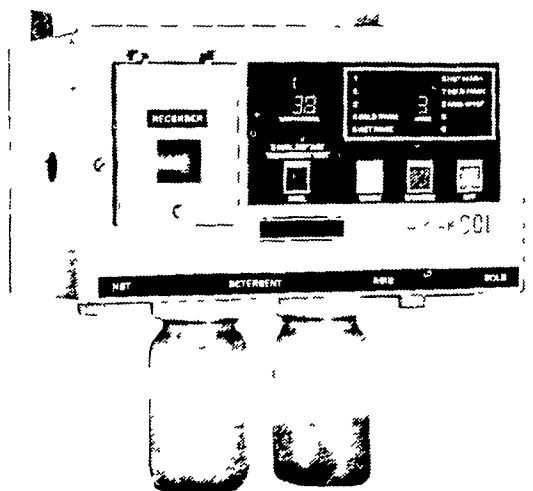


Pump shroud shown removed for detail



Featuring:

- Built-in recorder
- No Problems with Interval times
- Interval timer agitates milk 4 different times in one hour
- Built-in warning system - A horn or light warning signal is given when milk temperature rises two degrees or when milk temperature drops to 34 degrees
- Built-in automatic washer
- Milk agitates 1½ minutes out of every 15 minutes
- Automatic washer is built in
- Full flood refrigeration system
- Can operate the tank manually in time of emergency



Features:

- Temp-Matic shows the temperature and records it every hour.
- Identification light signals when the temperature being monitored rises above 45°, Falls below 34°, or when the controller is switched off.
- Solid-state six-cycle washing and sanitizing assures dependable, complete cleaning of the tank interior.

We Service All Makes Bulk Tanks

• PLANNING LAYOUTS • SALES • INSTALLATION • SERVICE

SHENK'S FARM SERVICE

501 E. WOODS DRIVE, LITITZ, PA 17543-
PH: 717-626-1151

★ OUR SERVICE TRUCKS ARE RADIO DISPATCHED
★ 24 HOUR SERVICE

After Business Hours Phone: Paul Repine - 717-626-2837

Mervin Nissley - 717-872-4565

24 HOUR REFRIGERATION SERVICE
— WORK GUARANTEED

USED TANKS

300 gal Girton
300 gal Dari Kool Ice Bank
400 gal Zero
(2) 400 gal Girton 1 SOLD
500 gal Girton
600 gal Delaval
(2) 600 gal Milkeeper 1 SOLD
600 Mueller
D 2600 gal Girton

700 gal Mueller
D 2800 gal Girton
800 gal Sunset
D 4800 gal Girton
800 gal Milkeeper
D 41000 gal Girton
1500 gal Girton w 25 hp compressors
1500 gal Mueller Model OP
Used Dumping Station