

Livestock market and auction news

Lancaster County Weekly

(Continued from Page A2)

1275 lbs. 57 50-63 00, few 63 00-65 75; Good 1000-1250 lbs 54 50-58 50

BULLS Yield Grade 1 1300-1800 lbs 56 50-59 50,

several 60 00-63 75 with 12 head 64 00-66 75, Yield Grade 2 1000-1350 lbs 52 50-57 50, few 50 50-52 50

VEAL CALVES Vealers 5 00-10 00 higher, instances 12 00 higher on high Good and low Choice 60-115 lbs Demand good for calves returned to farm

VEALERS Prime 280-340 lbs 102 00-111 00, Choice 130-280 lbs 86 00-100 00, few 100 00-110 00, high Good and low Choice 120-260 lbs 79 00-95 00, 90-115 lbs 68 00-82 00, mainly 75 00-82 00, 60-85 lbs 65 00-75 00

RETURNED TO FARM Bulk 90-125 lbs holstein bulls 90 00-105 00, few 105 00-115 00, several 80-95 lbs 75 00-85 00, bulk 90-125 lbs holstein heifers 110 00-135 00, around 75 head 145 00-175 00

Oklahoma Cattle

Thursday, July 10

Report supplied by USDA **CATTLE AUCTION.** Record high temperatures of 100+ degrees for the last few weeks has been the primary factor influencing two day receipts in excess of 25,000 head, largest two day run to date this year. Trading fairly active. Feeder steers steady to 1.00 higher, heifers over 500 lb. steady to 1 00 lower Not enough sales on

heifers under 500 lb. to test trends. Bulk of the supply largely medium frame 1-2 500-900 lb. feeder steers and 500-700 lb heifers Good buyer attendance.

FEEDER STEERS: Medium Frame 1: 400-500 lb. 75.75-81.50, mostly 76.75-79.00, part load 402 lb. 84.60, 500-600 lb. 76.00-79.75, load 525 lb. Thun 83.50, 600-700 lb. 71 50-74.50, mostly 73.00-74.00, 700-800 lb. 70.50-72.25, 800-900 lb. 68.75-70 50, 870-900 lb. Very Fleshy 66.25-66.75, 900-950 lb. 68.00-68.75. Medium Frame 1-2. Lot 410 lb 77.00, 2 lots 560-580 lb. 75.50, 700-775 lb. 70.00-71.00. Large Frame 1: Few 750-775 lb. 70.75-71.25, lot 825 lb. 69.75. Large Frame 1-2: Part load 560 lb 74 60, 700-800 lb. 67.50-70 25, 825-950 lb. 66.50-67.00, load 1040 lb. 67.40. Large Frame 2 Holsteins: Lot 665 lb. 66.50, 845-875 lb. 60.75-61.25, lot 980 lb. 57 25.

FEEDER HEIFERS: Medium Frame 1: Lot 370 lb. 69 75, lot 450 lb. 67 00. 500-600

lb. 65.25-68.00, mostly 66.00-67.00, 600-700 lb. 64.25-67.00. Medium Frame 1-2: Lot 470 lb. Thun and gaunt 70.00, 425-550 lb. 64.50-67.50, 600-700 lb. 64.25-64.75. Large Frame 2: 475-625 lb. 60.25-63.75, load 550 lb. 65.00.

FOR THE WEEK:

Feeder steers over 600 lb. steady to 1.00 higher, under 600 lb. 1.00-2.00 higher. Feeder heifers steady to 1.00 lower, mostly decline on offerings over 500 lb. Slaughter cows lost part of the weeks early advance on the close but still were 1 00-1.50 higher. Late sale included Utility and Commercial 2-3 42.00-44.00, Cutter 1-2 40.00-43.00. Slaughter bulls ended the week steady to 1.00 higher. YG 1-2 1600-1700 lb. 56.00-58.50; individual 1900 lb. 60.00. Salable receipts near 30,300 head compared to 12,396 this last holiday shortened week. Feeder steers and heifers comprised 95% of supply. Cows and bulls 5%
HOG AUCTION: 900.

Sl. bullocks: few Good 57.00-61.75. Sl. bulls: Yield Grade No. 1, 1300-1980 lbs. 54.50-59.85; few Yield Grade No. 2, 1100-1600 lbs 50.00-52.75.

FEEDER CATTLE: few Large Frame No. 2, 375-600 lbs. 63.00-67.00. Few Large Frame No. 2 430-600 lbs. 52.50-57.00.

CALVES: 572. Vealers grading standard & good \$10-12 higher. Choice 78.00-86.00; Good 72.00-83.00; few Standard & Good 110-130 lbs. 72 00-79.00; 90-110 lbs. 70.00-76.00; 70-85 lbs. 60.00-72.00; Utility 55-100 lbs. 50.00-65.00.

FARM CALVES: Hol. Bulls 90-130 lbs. 85.00-100.00, few down to 75.00; Hol. Heifers 85-140 lbs. 115.00-165.00.

HOGS: 82. US No. 1-2 220-260 lbs. 43.60-43.85; No. 1-3 190-220 lbs. 41.85-43.00; 1 lot No 1-3; 270 lbs. 39.00. US No. 1-3 360-600 lbs. 34.00-40.00 few Utility 230-300 lbs. 24.00-32 50. Couple Boars 27 25 and 28 25.

FEEDER PIGS 127 Few No 1-3 25-35 lbs. 9.00-16 00; No. 1-3 35-55 lbs. 20.00-27.50.

SHEEP. 39. 1 lot Choice 105 lbs. 61.25; Good & Choice 65-90 lbs. 57.50; 1 lot Utility 55 lbs 54.00. Sl. ewes 22.00-28.00.

Chambersburg Auction

Thursday, July 10

Report supplied by PDA **CATTLE** 332. Compared with last Thursday market: Sl. cows \$1-4 higher. Sl steers. few Choice 900-1260 lbs 61.75-63.25; Good 58.00-62.25; Standard 53.00-57.35; few Utility 48.00-52.50. Sl. heifers: Good 55.50-58.85; few Standard 52.75-55.00. Sl cows: Utility & Commercial 43.25-50.00, mostly 44.00-47.00; Cutters 42.50-49.00; Canner & L. Cutter 39.85-44.60; Shells down to 35.50.



Patz

★ Barn Cleaners, Manure Pumps, Manure Stackers, Silo Unloaders, Bunk Feeders, Feed Conveyors

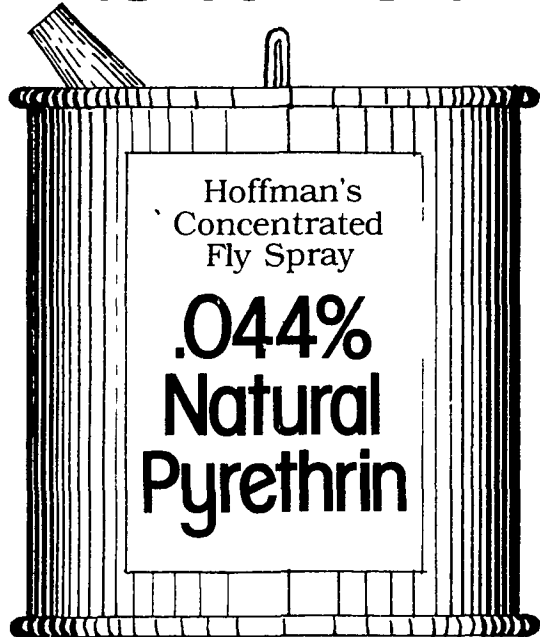
MARVIN J. HORST

DAIRY EQUIPMENT

1950 S. 5th Avenue, Lebanon, Pa. 17042
Phone: 717-272-0871

Are you paying more for less?

Compare and Save!



Hoffman's Fly Spray knocks 'em down and keeps 'em down. Beware of more dilute brands.

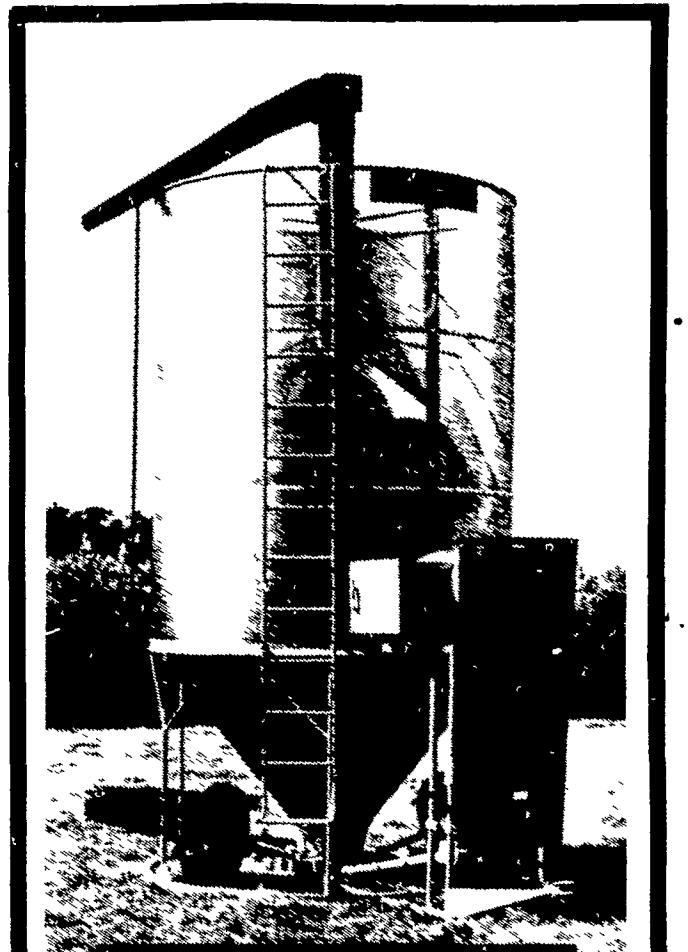


J. L. HOFFMAN CO., INC.
SERVING THE FARM COMMUNITY SINCE 1884
Allentown, Pa. Phone (215) 432-4466

Floyd Heintzelman
Lehigh County (215) 395-3561
Fred Gaul
Berks County (215) 678-2210

Kermit Kessler
Northampton County (215) 588-3671
Aaron Groff
Lancaster County (717) 354-4631

DEALER INQUIRIES INVITED PROTECTED TERRITORIES AVAILABLE



MORIDGE
GRAIN DRYERS
— IN STOCK —

GRUMELLI'S FARM SERVICE

Quarryville, PA. 17566
Phone: 717-786-7318