

Silo soliloquy — a little humor in the round

BY DICK ANGLESTEIN
HERE AND THERE —
 What's the most prominent feature on the rural skyline?

The silo, of course.
 After rising for more than a century as massive concrete crops, they've come to dot the countryside, particularly in dairy land.

But a silo is much more than a cylinder on end that serves as a pastoral pantry to help get a dairy herd through a long, cold winter.

Silos are something like rural history books. They can reveal information about a farm's past. Clusters of different sized silos tell of continuing farm expansion as increasing herd numbers forced newer and larger construction. Squat, concrete structures recall the days of arduous hand-filling. And a goodly number are still so used today in Lancaster County.

Silos serve as landmarks. How many times have you given directions-by-silo to a stranger.

"Just head toward that tall blue one, you can't miss it." Or.

"Turn right at the farm with the twin silos."

Silos that were there long before airports moved farther and farther into the country now blink in the night. Pilots sight on them to get into the landing pattern.

At Christmas, almost every area has its silo with a star on top.

At nearby Three-Mile-Island, city TV and newspaper photo crews found out just how tall an 80-foot silo is. It provided an ideal vantage point to film and photograph the nuclear plant and surrounding area, but these photographers will think twice before climbing one again.

Many silos resemble big blue flagpoles for displaying rural patriotism.

Others are a backdrop for names.

They are made of all different kinds of materials. There are those of metal, wood, concrete and tile. Some are gouged lengthwise into the ground with concrete sides and a wrap topped with old tires. And now some are big plastic baggies.

But did you ever consider them the subject of silent countryside humor? They



VALLEYBROOK APARTMENTS

Where did everyone go: I'm all alone now.



DRYTOWN ROAD

It was so slow and easy around here until that big blue bully crowded in.

stand as kind of a silo soliloquy.

Scattered on this page are various sized and shaped silos found in Lancaster County. I've put a caption to each. If you don't like the caption provided, try one of your own.

The next time you're driving to town for some baler parts or whatever, take notice of the silos. See if they say anything funny to you.

If you happen to have a camera, snap a photo of your favorite and send it along with a caption. Or write and tell us of one and if we're in the area, we'll take a photo of it.

And with all necessary apologies to Hamlet and Shakespeare, here's our "Silo Soliloquy."



HERRVILLE ROAD

It's not "Oklahoma," but it's the silo with a fringe on top.



RT. 322, HINKLETOWN

Textures, history and sunrise.



BUCKWALTER ROAD

Let's get a fulltime hired hand so we can go to the beach more often.



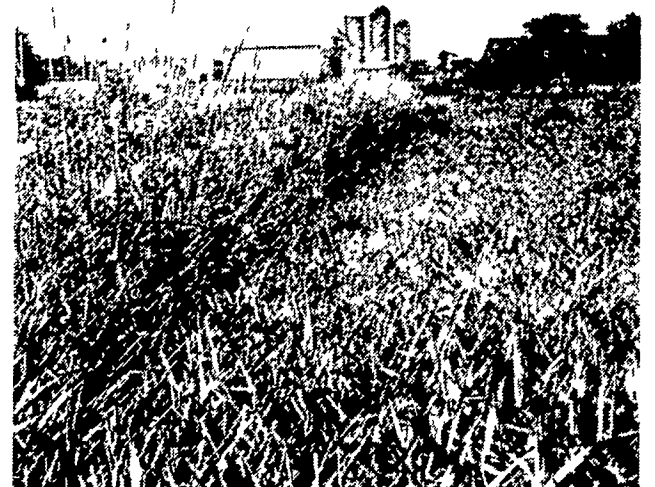
MILLWOOD ROAD

High production costs and low farm prices made me blow my top.



COCALICO ROAD

For rent -- no conveniences but a great view



LANCASTER AIRPORT

We gotta' watch this hugging in public, particularly when the little fella is around.