

**On being
a farm wife
- And other
hazards**
Joyce Bupp

Yoo hoo - you out there Mother Nature. This thing I'm waving is a white flag It means surrender. Mother N., whatever it is that we've done that you're holding us under siege for, we surrender.

Could you just give us some normal weather for once? Whatever that is. While two and a half inches of rain in a half hour are ripping through our fields and re-landscaping my gardens, our poor friends in Texas are swollen, parched and cracked in an unrelenting, almost unprecedented heat wave

Our neighbors across the county and the state are scratching their heads and examining insurance policies for coverage on tornado-twisted doors, gaping holes in roofs and suddenly open-air barns They're also muttering in disbelief over fruit split apart on the trees, vine and vegetable crops denuded of their leaves and corn hanging in shreds like so many acres of Johnsongrass And then, you just never know when a volcano might go berserk and bury us in a foot of grit

In other words, Mother N, we know you're out there

Now lay off, will ya'?

Is this oddball weather punishment for the loose society in which we're living? Some would say yes.

Is it part of the upcoming 1982 configuration of the planets that's to wreak strange magnetic happenings across the solar system? Some would say yes

Or is it good old Three Mile Island? Some would say yes

But whatever, Mother N, that's all gotta' change We're reporting you to the bureaucracy

Henceforth, you will be expected to file an Environmental Impact Statement for volcanic ash disbursements Droughts are forbidden without the proper permits, filed at local, state and federal levels. naturally, and pending relevant and retroactive legislation Appropriate littering laws will govern the careless tossing about of hail balls and fines will be levied based on the damage And before one single dark, rumbling thundercloud can sneak onto the horizon, a heavy storm hearing must be held

If the rest of us have to do it Mother N, so should you It's only fair

Order 4 milk price rises to \$14.46

ALEXANDRIA Va — Joseph D Shine Thursday Middle Atlantic Order Market Administrator announced a Class I milk price of \$14.46 per hundredweight for August 1980.

This price is up two cents from the July price and is 92 cents above last August

Order No. 4 prices are announced for milk testing 3.5 per cent butterfat, f.o.b. plants located within 55 miles of Philadelphia, and also within 75 miles from the nearer of Washington, DC or Baltimore, MD

There is also a 6-cent direct-delivery differential applicable to producer milk received at plants located within 55 miles of Philadelphia.

Shine announced a Class II milk price of \$11.59 per hundredweight for June 1980

and a butterfat differential of 16.0 cents for the month. The Class II milk price increased three cents from the previous month while the butterfat differential was up three tenths of a cent.

These class prices are based on the June 1980 Minnesota-Wisconsin manufacturing milk price of \$11.68 per hundredweight adjusted to a 3.5 percent butterfat content

The USDA reported that the wholesale price of Grade A butter at Chicago for June was \$1.3895 per pound and the nonfat dry milk price was \$.8917 per pound, f.o.b. plants in the Chicago area.

Lebanon looks for biggest tree

LEBANON — Forest land covers about one-third of the land area in Lebanon County. Nestled in among these thousands of acres of forest land and in the yards of some homes are a few exceptionally large trees that have been spared the woodman's ax.

"We would like to locate and measure these exceptionally large trees," says Gene Odato, Forester-Naturalist with the Lebanon County Conservation District "These trees can then be nominated for the County's big tree program."

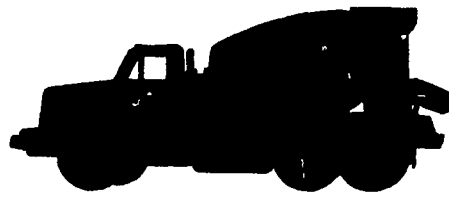
It's possible we may find a few specimens to nominate for the state's largest tree program. At the present time, the largest European Beech in the state is growing here in Lebanon County.

"It is very possible that the largest tree of other species could also be located in the forests or yards of some county residents," says Forester Odato

It would be of interest, he adds, if there is any event of historical interest associated with the tree For example, a large White Oak tree growing in Lancaster County known as the Donegal Witness tree was the scene of

a Declaration of Loyalty by the people of that area in 1777

To nominate a large tree in the big tree program, contact Odato at 272-3377 He will then schedule a time to photograph and measure the nominee



COCALICO CONCRETE

Ready Mix Concrete For Every Purpose

SERVICE IS OUR BUSINESS

- Quality Controlled Concrete
- Radio Equipped Fleet
- Mix Uniformity thru Automation
- Saturday Morning Delivery

For Prompt Courteous Service Call

(215) 267-7591

Toll Free (800) 422-8107

COCALICO CONCRETE

A Division of



R D 3, DENVER PA

CRUSHED STONE • READY MIXED CONCRETE • ASPHALT PAVING

CHEESE

PENNSYLVANIA AGRICULTURE



WE'RE GROWING BETTER

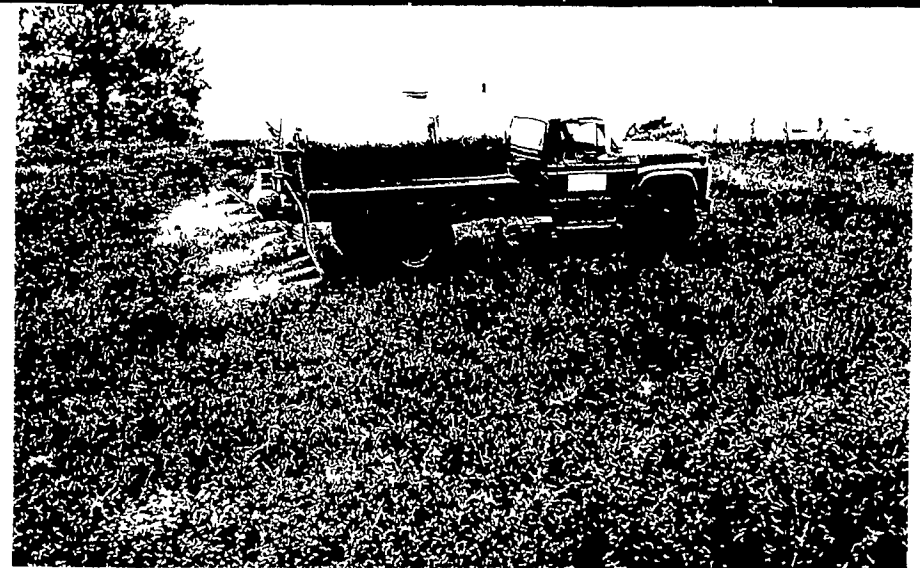
PLAINFIELD FARMERS FAIR

Rt. 191, 5 miles South of Bangor, Pa.
July 23 - 7 00 P M Class C PTPA 4x4 Wheel Truck Pull
Music by Joe Reichel's Group & a Pie Eating Contest

Exhibits of Clothing, Flowers, Baked Goods and Vegetables

July 24	10 00 A M 7 00 P M	Black and White Dairy Show Class B PTPA Farm & Modified Tractor Pull Antique Engines & Farm Equipment on display
July 25	10 00 A M 7 00 P M	Youth Dairy Show Class B Garden Tractor & Mini Rail Pull 4-H Fashion Show Cake Walk & Music
July 26	9 00 A M 2 00 P M 6 00 P M 8 30 P M	Sheep Show Steer Show Community Fun Day Watermelon Eating Contest Music by Willis Meyers & Cake Walk

Chicken Barbeque on
Friday & Saturday, 25th & 26th
Parking and Admission



ARCADIAN® liquid gives a profitable boost to alfalfa after every cutting.

Give alfalfa a liquid boost after the first cutting

That's when topdressing N-P-K, and micronutrients in an Arcadian® liquid fertilizer made with POLY-N® pays big dividends in high yielding, high quality alfalfa You can even add pesticides if you need to

When it's done right, a topdressing after every cutting will increase the yields It will raise the protein content Help the crop compete better against grasses And improve the vigor for a long stand life

Arcadian liquid makes it easy Made the SLF® way. Arcadian liquid gives you uniform distribution of fertilizer ingredients from start to finish It's truly the efficient way to turn alfalfa into green gold



MARTIN'S AG SERVICE

c/o John Z. Martin
RD #1 Box 716 New Holland Pa 17557
Ph 717-354-5848

ZIMMERMANS LIQ. SERVICE

Rehrersburg, Pa
Ph 717-933 4360