

Livestock market and auction news

Dewart Auction

Monday, June 30

Report supplied by PDA
CATTLE 202. Compared with last Monday's market, slaughter steers GRADING Choice 25 cents to 75 cents higher. Slaughter cows \$1.50 to \$3 lower. Few High Choice & Prime slaughter steers 64.00-68.25, Choice No. 2-4 1000-1450 lbs. 63.00-65.85, Good 56.75-61.50, Standard 53.75-56.75. Few Choice slaughter heifers 57.25-59.00 Utility & Commercial slaughter cows 43.00-49.00, couple to 49.85, Cutters 44.00-48.25, Canner & Low Cutter 50-54.00, Shells down to 37.25. Few Good slaughter bullocks 60.25-62.50. Few Yield Grade #1 1100-1600 lbs. slaughter bulls 50.00-57.10.

CALVES 177. Bulk of supply returned to the farm One Prime vealers at 116.00, Choice 86.00-98.00, few Good 80.00-85.00, Standard & Good 80-100 lbs 80.00-83.00 Farm calves, holstein bulls 85-130 lbs 90.00-124.00, mostly 110.00-120.00; holstein heifers 80-120 lbs 110.00-150.00

HOGS 815 Barrows & gilts 50 cents to \$1 higher US No. 1-2 200-240 lbs. barrows & gilts 43.75-44.60, one lot 44.85, No. 1-3 190-250 lbs 41.50-43.50, No. 2-3 220-260 lbs 38.00-40.50, No. 1-3 150-180 lbs. 31.00-38.50 US No 1-3 300-550 lbs. sows 28.50-33.00, No. 2-3 300-600 lbs. 25.00-29.00 Boars 25.50-27.00, couple to 30.00.

FEEDER PIGS 322. US No. 1-3 20-35 lbs. feeder pigs 13.00-21.00 per head, No. 1-3 35-50 lbs 20.00-30.00, No. 1-3 60.70 lbs. 31.50-36.00 per head

SHEEP 24 Choice 70-105 lbs spring slaughter lambs 57.00-60.00, few Good 50-75 lbs. 50.00-56.00. Few slaughter ewes 15.00-20.00

Four States Livestock

Hagerstown, Md.

Wednesday, June 25

Report supplied by auction
SLAUGHTER: Fed Steers \$1.00 higher. Choice 64.00-66.10; Good 59.00-63.00;

Medium 58.00-Down Heifers- Good 48.00-51.00; Medium 47.00 Down. Cows- Good run, \$1.50 lower High Yield 49.50-51.00; Average 46.00-49.00; Big Middle 42.00-45.00; Shelly 43.00 Down Fat Bulls \$1.50 lower Good 57.00-58.35; Medium 52.00-56.00. Veal Calves Mostly steady prices. Choice 95.00-98.00; Good 87.00-94.00, Medium 75.00-86.00; Farm Hfrs to 185.00; Farm Bulls to 120.00; Light & Weak 69.00 Down. Lambs \$2.50 higher Choice 62.00-64.00; Good 57.00-61.00; Medium 56.00 Down.

STOCKER: Steers 300-550 lbs. Steady prices Choice 80.00-83.00; Good 73.00-79.00; Medium 68.00-72.00; Culls 67.00 Down. Steers 600-850 lbs. Choice 75.00-78.00; Good 68.00-74.00; Medium 67.00 Down. Heifers (All Weights) Choice 60.00-63.00; Good 54.00-59.00; Medium 53.00 Down Bulls Choice 65.00-67.00; Good 61.00-64.00, Medium 60.00 Down Dairy Cows to 1000.00. Springing Heifers to 1325.00 Pigs, Hd \$3.00 higher 20-30 lbs. 10.00-19.00; 40-60 lbs 20.00-29.00 Slaughter Hogs Very active, \$3.00 higher 210-230 lbs 40.25-41.60; 240-260 lbs 40.00-41.00; 185-205 lbs 36.00-39.50 Sows 300-680 lbs 27.00-31.25, Thin Sows 23.00-26.00.

Livestock Exchange

Monday, June 30

Auction supplied by USDA
CATTLE 300: Slaughter steers \$1.00-2.00 higher Heifers 75 cents to \$1.50 higher. Cows 50 cents to \$1.50 lower Bulls weak to \$1.00 lower Supply 25% slaughter steers and heifers, 50% cows, 20% feeders, balance bulls.

SLAUGHTER STEERS Choice 2-4 950-1275 lbs. 64.50-66.75; Good & choice 2-4 1075-1275 lbs. 62.50-64.00; few Good 2-3 1000-1350 lbs 56.75-60.75.

SLAUGHTER HEIFERS Choice 2-4 850-1000 lbs 60.00-62.25; Good 2-3 840-1200 lbs 55.75-58.85.

COWS. Utility 2-3 42.00-49.00; few 49.50-50.00 Canner 1-2 39.00-44.75

BULLS: YG 1-2 1020-1775

lbs. 53.60-59.00 Individual 1 1585 lbs. 63.35.

FEEDER CATTLE. Steers Medium Frame #1 415-500 lbs. 70.00-75.00; 500-600 lbs. 65.25-69.50, 700-825 lbs 65.25-66.75, few 900-1000 lbs 62.75-64.50 Bull calves Medium Frame #1 350-500 lbs 65.00-73.50 Heifers Medium Frame #1 310-475 lbs 57.50-64.00

HOGS 600. Barrows & Gilts compared to last Wednesday, \$1.50 higher US 1-2 200-240 lbs. 43.25-43.50 few 43.75 US 2-3 230-260 lbs 42.50-43.25

SOWS. \$2.00-3.00 higher US 1-3 300-600 lbs. 30.00-32.00

VEAL AND CALF AUCTION 75 Choice 150-265 lbs. vealers 79.50-89.00; Good and Choice 145-220 lbs 67.50-77.00; 90-125 lbs 65.00-73.50; few calves returned to farm 77.50-88.00.

SHEEP AUCTION Pkg Choice spring lambs 108 lbs 60.00.

Shenandoah Valley Livestock

Harrisonburg, Va.

Saturday, June 28

Report supplied by auction
STOCKER, FEEDER, AND SLAUGHTER CATTLE Good Light Steer Calves 70.00-76.00, Medium 65.00-70.00, Plain 60.00 and down, Good Heavy Steers 69.00-74.00, Medium 64.00-69.00, Plain 59.00 and down, Holstein Steers 56.85 and down, Good Slaughter Steers 63.00-65.60, Medium 60.00-63.00; Plain 57.00 and down; Good Light Heifer Calves 58.00-62.00; Medium 53.00-58.00; Plain 48.00 and down; Good Heavy Heifers 53.00-57.25; Medium 48.00-53.00, Plain 43.00 and down; Slaughter Cows 40.00-44.75; Utilities 35.00-40.00; Cannery & Cutters 30.00 and down, Milk & Stock Cows 66.00 and down, Slaughter Bulls 60.25 and down.

CALVES Veal Calves 120.00 and down; Baby Calves 83.00 and down

SHEEP & LAMBS. Choice Blue O 63.75; Good Red O 52.50, Feeder Lambs 50.00; Slaughter Ewes 16.50 and down

HOGS: Top 41.70, Heavy 38.00; Medium 40.30; Light 33.25; Sows 35.25 and down, Boars 21.85.

Morrison Cove Auction

Monday, June 30

Report supplied by auction
CATTLE 179. Choice slaughter steers 62.50-65.50, Good 60.00-63.20, Standard 54.00-60.00, Utility 49.00-56.00 Good slaughter heifers 56.00-62.00, Standard 53.00-60.00, Utility 46.00-55.00. Utility & Commercial slaughter cows 45.00-51.00, Cutters 44.00-49.00, Canner & Low Cutter 41.00-45.00, Shells down to 37.00 Good slaughter bullocks 57.00-65.00, Standard 55.00-59.00, Utility 51.00-55.00. Yield Grade #1 1000-2000 lbs slaughter bulls 56.00-64.00, yield grade #2 900-1600 lbs 55.00-58.00

CALVES 266 Choice vealers 85.00-93.00, Good 80.00-88.00, Standard & Good 90-110 lbs 73.00-82.00, 70-90 lbs 66.00-74.00, Utility 55-100 lbs 55.00-68.00 Farm calves, holstein bulls 90-120 lbs. 90.00-116.00, holstein heifers 85-130 lbs 125.00-190.00

HOGS 438 US No 1-2 200-240 lbs barrows & gilts 41.00-43.50, No 1-3 195-230 lbs 40.00-41.50, No 2-3 250-270 lbs 39.00-40.00, No 1-3 130-185 lbs 30.00-37.00. US No 1-3 300-575 lbs sows 31.00-35.00, No 2-3 300-650 lbs 30.00-33.00 Boars 24.00-28.00

FEEDER PIGS 102 US No 1-3 20-35 lbs feeder pigs 14.00-18.00 per head, No 1-3 35-50 lbs. 20.00-29.00 per head.

SHEEP 22 Choice 85-90 lbs spring slaughter lambs 56.00-61.00

East Coast Carlot

Tuesday, July 1

Report supplied by PDA
 Compared to Monday's close Pre-holiday demand light for prime special fed veal, limited sales weak with Friday's last test Good and Choice boning veal steady to firm; unshipped, no sale reported

VEAL CARCASS HIDE ON 75 Head

Prime (Special Fed) 180-240 lbs. few 160.00 LTD, weak with Friday.

BONING TYPE
 Good and Choice
 Northeastern Suppliers

65-75 lbs 116.00-120.00, Bulk 116.00-118.00, all steady to firm; 55-64 lbs. 114.00-118.00, Bulk 114.00-116.00; 45-54 lbs. 112.00-116.00, Bulk 112.00-114.00; 35-44 lbs. 110.00-114.00, Bulk 110.00-112.00; 34 lbs. down 108.00-112.00, Bulk 108.00-110.00

Inshipped No sales reported.

SPRING LAMB CARCASS
 Choice & Prime 3-4
 1 Load
 55 lbs Down, 138.00

CURED AND PROCESSED MEATS
 11 Loads
 Skinned Hams: 16-20 lbs. 76.00 weak.

Semi-boneless Hams. 14-17 lbs. 102.00 firm.

Boneless Hams 13-17 lbs. 126.00 firm.

No 1 Sliced Bacon: Vacuum Pack, 1 lb. pkg 93.00 weak.

Franks, 70 Beef, 30 Pork 1 Lb Pack. 83.00 steady

Central U.S. Carlot

Tuesday, July 1

Report supplied by USDA
 Compared to Monday's 4:30 report steer beef no comparison available Choice Heifer beef steady - 1.00 lower. Trading slow & forced with couple offerings; demand light to processors, moderate to packers as live cattle is current and in firm hands Sales reported on 34 loads of steer and heifer beef

STEER BEEF
 15 Loads

FOB Omaha Basis
 Choice 3 600-900 lbs. 105.00-107.00, 106.00-107.00 late.
 Choice 4 600-900 lbs 97.00
 Good 2-3 600-900 lbs. 102.00.

FOB Amarillo Basis
 Choice 3 600-800 lbs. 106.00-107.00.

HEIFER BEEF
 19 Loads

FOB Omaha Basis
 Choice 3 500-700 lbs. 99.00-100.00 steady 1.00 lower early
 Choice 3 550&Up lbs 101.00-102.00
 Choice 2-3: 550-650 lbs. Y.G. 3 104.00 Chan, Y.G. 2 105.00 Store.
 Good 2-3: 500-700 lbs. 96.00.

Cow beef unestablished, undertone weak with a wait & seen attitude.

COW BEEF

3 Loads
 FOB Omaha Basis
 Utility: 450 & up lbs. 75.00 West.

PRIMAL BEEF CUTS
 Choice 3

1 Load
 FOB Omaha Basis
 ARM CHUCKS: 75-120 lbs. 76.00.

BONELESS PROCESSING BEEF/BEEF TRIMMINGS
 16 Loads

FOB Omaha Basis
 50% chem lean fresh 56.00-58.00.
 50% chem lean frozen 52.00.

Compared to Monday's 2:15 report: Fresh pork loins 17&dn lbs. steady-1.00 higher, 17&up lbs. 1.00 lower. Boston butts steady. Fresh hams 2.00-4.50 lower. Sdls Belhies 10-12 lbs. 1.75 higher, 20-25 lbs. 5.00 higher, rest untested. Trading light, demand light to moderate. Sales reported on 31 1/2 loads and 7 loads of trimmings and variety meats.

FRESH PORK CUTS

LOINS: 14/dn lbs. 84.00; 14-17 lbs 81.00-85.00, steady-1.00 higher, 14-17 lbs 86.00 Next Week Ship; 17-20 lbs. 77.00-77.75, 1.00 lower; 20&up 66.00, 1.00 lower; 20/up lbs 67.50-68.00 clear channel.

BOSTON BUTTS. 4-8 lbs. 75.00, steady; 8&up lbs. 70.00, steady.

SPARERIBS 3/dn lbs. 125.00-129.00; 3-5 lbs. 99.00.

SKINNED HAMS: 14-17 lbs 69.50, 2.00 lower; 17-20 lbs. 69.50, 4.50 lower; 20-26 lbs. 71.00, 2.00-3.00 lower.

BELLIES, SDLS 10-12 lbs. 34.75, 1.75 higher, 20-25 lbs. 40.00, 5.00 higher

VARIETY MEATS
 SKINNED JOWLS: 31.75 Frozen.
 HEARTS. 45.50-46.00

PORK TRIMMINGS
 BONELESS PROCESSING PORK

(Chemical Lean)
 42% lean trimmings fresh 37.00-41.00, 42% lean trimmings frozen 34.00; 72% lean trimmings fresh 76.00.

FRIDAY, JULY 11
 ON THE FARM MONTHLY

BRED GILT SALE

Sale to start promptly at 1:00
 Every 4 weeks

Located 18 miles south of Lancaster, PA, 6 miles south of Quarryville, take Rt 272 to Little Britian, turn north, follow Little Britian Rd. to Jackson Rd. 2nd farm, OR Take Rt 222 out of Quarryville to Cedar Hill Rd to Little Britian Rd. to Jackson Rd Watch for sale arrows.

50 to 60 Head

more or less

2 & 3 Way Crossbred Gilts
 York & Hampshire & Duroc

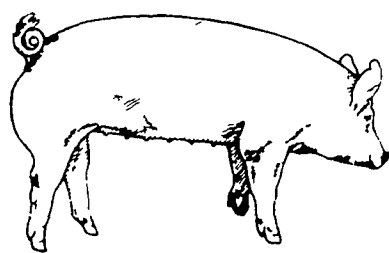
Due to farrow 3 days to 4 weeks after sale date. Now everything vaccinated for both Lepto & Erysipelas, wormed and sprayed for lice

Local trucker available
 No hogs sold on commission

CHRIST A. BEILER
 RD 2, Quarryville, PA
JOHN B. STOLTZUS

Abe Diffenbach
 Auctioneer

Next Sale Date - August 8



PENN PACKING BUYING STATION

At Green Dragon Livestock Sale
 1 mile north of Ephrata, Pa.

WILL BE OPEN MONDAY, JULY 7th

7 A.M. to 12 NOON

Know What You Are Going to Get For
 Your Hogs Before They Leave Your
 Farm

NO SELLING COSTS

CALL FOR MARKET QUOTES
 717-733-9648

ATTENTION FARMERS!!

SPRAY MATERIALS

IM-PRUV-ALL

MEDINA
 SOIL ACTIVATOR

Check Our Prices Before You Buy.

MELVIN R. WEAVER

2213 Leabrook Road, Lancaster, PA 17601
 Ph 717-898-8354 or 569-6576