

Livestock market and auction news

Hay Markets

Green Dragon Hay

Ephrata, Pa.
Friday, June 27
Report supplied by PDA
41 Loads Hay and 14 Loads Straw.
Alfalfa few 50.00-67.00; Mixed hay 35.00-50.00, few to 69.00; Timothy hay 36.00-52.00; Straw 36.00-65.00; Ear Corn, 16 loads 92.00-99.00, couple down to 76.00; Corn Fodder, one load at 51.00.

Regional Hay

Friday, June 27
Report supplied by PDA
(All hay No. 2 and better, prices paid by the dealers at the farm and per ton.)

Hay and straw slow and mostly steady, some second cutting Alfalfa on the market.

Alfalfa, few 40.00-65.00; Mixed hay 35.00-50.00; Timothy hay 30.00-45.00; Straw 35.00-40.00; Mulch 20.00-30.00.

Good's Hay

Leola, Pa.
Wednesday, July 2
Report supplied by auction
64 loads.
Alfalfa 50.00-64.00; Timothy 54.00-58.00; Mixed 52.00-68.00, one at 106.00; Corn 95.00-105.00; Straw 42.00-58.00.

New Holland Hay

New Holland Sales Stables
Monday, June 30
Report supplied by auction
78 loads.
Alfalfa 59.00-101.00; Timothy 35.00-70.00; Mixed 24.00-85.00; Straw 44.00-75.00; Corn 60.00-99.00.

Fogelsville Poultry

Fogelsville, Pa.
Tuesday, June 24
Report supplied by USDA
(Prices paid dock weights, cents per pound, except where noted)
HENS, LIGHT TYPE: range 5-6, mostly 6.
HENS, HEAVY TYPE range 25-35, mostly 35.
PULLETS: range 45-47, mostly 45.
FRYERS range 42 1/2.
DUCKS range 98-109, mostly 109.
RABBITS range 35-60, mostly 50.
GUINEAS range 235-244, mostly 243.
PIGEONS (Per Pair) range 160-530, mostly 160.
TOTAL COOPS SOLD 160

NEW HAY AUCTION

EVERY FRIDAY - 1:30 P.M.

Straw, Grain, Firewood, etc.

HORSE AUCTION 7:30 P.M.

BEIL'S SALES

1 Mi. North of York Springs on Route 15
Hay - 717-334-7724, David W. Martin, Auct./Mgr
Horse - 717-528-8218, Wm. Artrip, Auct

Oklahoma Cattle

Wednesday, July 2
Report supplied by USDA
Cattle and Calves 7500
CATTLE AUCTION
Feeder steers and heifers over 500 lbs. steady to 2.00 higher, demand good. Both classes under 500 lbs steady, demand moderate. Weather extremely hot. Slaughter cows and bulls scarce, trends not tested. Advance estimate for Thursday's auction 5,000 head.

FEEDER STEERS: Medium Frame 1. few 475-500 lb. 71.75-78.00, 500-600 lbs. 70.00-77.00, 600-700 lb. 70.50-74.25, lot 625 lb 75.50, 700-800 lb. 68.50-72.00, Mostly 69.50 up, 800-900 lb. 67.50-69.80, lot 805 lb. 70.70. Medium Frame 1-2; 400-500 lb. 69.50-77.00, 350 lb. 79.50, 500-600 lb. 66.50-74.25, 600-700 lb. 68.50-73.00, 700-800 lb. 67.75-69.50. Large Frame 2: Holsteins: 415 lb. 66.75, 600-700 lb. 61.00-64.00, 750-875 lb 60.25-61.50, 960 lb. 57.00

FEEDER HEIFERS: Medium frame 1 400-500 lb fleshy 62.50-67.00, 500-600 lb. 64.00-67.80, bulk at 65.75-67.80, 600-700 lb. 64.00-68.00, 700-725 lb. 63.00-66.50, 820 lb. 62.00. Medium Frame 1-2 350-500 lb. 60.00-67.80, several 64.25-66.00, 500-600 lb. 62.00-66.25, 600-725 lb 61.25-64.00. Medium Frame 2: 475-650 lb. 57.00-62.00.

SLAUGHTER COWS: lot Utility holsteins 1400 lb. 42.00

SLAUGHTER BULLS: few YG 1 1650-1800 lb. 55.00-56.00

HOG AUCTION: 1000 Barrows and Gilts steady; fairly active. US 1 210-250 lb. 43.00-43.20, 17 head 220 lb. 43.50. 1-2 195-240 lb. 42.25-42.80, 1-3 205-255 lb. 41.25-42.25, 2-3 270-290 lb. 38.00-39.00, 2-3 few 310-340 lb. 34.00-35.75.

SOWS: Steady US 1-3 375-625 lb. 33.00-34.05, 1 head 465 lb. 34.50.

BOARS: Over 370 lb. 26.75-27.10, 150-270 lb. 22.00-24.00.

FEEDER PIGS: Limited offerings over 100 lb. 3.00-5.00 lower, under 100 lb. untested. (78 head) all on a per cwt basis. US 1-2 7 head 172 lb. 30.25, 1-3 95-170 lb. 20.00-25.25

Compared to Wednesday morning, afternoon sales feeder steers fully steady; heifers over 500 lb. 1.00 higher, under 500 lb. steady. Very active trading on yearlings, calves continue to be under pressure due to hot weather hazards

FEEDER STEERS Medium Frame 1: 415 lb. 500-600 lb 69.25-77.00, load 675 lb 74.00, 700-800 lb. 69.00-72.00, 905 lb. 67.75.

HOLSTEINS Large Frame 2 thin 590 lb 67.00, 700-800 lb 61.00-63.00

FEEDER HEIFERS Medium frame 1 365 lb 67.50, fleshy 400-500 lb lots 66.75-67.00, 550-600 lb lots 69.00-69.75, 600-700 lb 67.50-69.00, 700-800 lb 65.00-66.50

Omaha Cattle

Wednesday, July 2
Report supplied by USDA
CATTLE AND CALVES:
Closing prices on slaughter steers were firm to 50 higher. Heifers closed steady to 25 lower, instances 50 off. Cows were 1.00-1.50 lower, bulls steady.

Fed cattle trading followed a quite irregular course in pre-holiday activity. Prices on steers and heifers were forced sharply downward on the opening session. But an aggressive midweek trade on small supplies more than offset the early decline on steers. In addition, commodity buyers claimed a large share of the steer supply on Wednesday. Supplies were poorly distributed over the trading period with 63 pct. of the three-day total arriving on Monday. The overall finish of the steer and heifer supply was noticeably less attractive than most recent weeks. Slaughter steers made up approximately 48 pct. of the week's total and heifers 27 pct. Cows comprised 11 pct. and feeders 10 pct.

STEERS: Two loads and part load choice and prime 3 with end 4 1184-1212 lbs. 70.25-70.50. Choice 2-4 1050-1325 Lbs. 68.50-70.00. Mixed Good and Choice 2-3 67.25-68.50. Good 2-3 63.50-66.50. Earlier, Good and Choice 2-3 1200-1425 lb. Holsteins 59.00-60.50.

Average of LS-214 detailed quotations for choice 900-1100 lb. steers this week 68.69. Choice 1100-1300 lbs. 68.78. Average cost slaughter steers for two days 67.56. Average weight 1138 lbs. as compared 68 11 and 1178 lbs. last week. Average cost heifers for two days 64.86, average weight 975 lbs as compared 65.60 and 999 lbs. a week ago.

HEIFERS: At midweek, part loads choice with few prime 3-4 975-1000 lbs. 67.00. Choice 2-4 900-1075 lbs. closed 65.50-66.50. Mixed

Good and choice 2-3 64.50-65.50. Good 2-3 61.00-64.00.

COWS: Utility and commercial 2-4 42.00-44.00, few utility 44.50. Cutter 42.00-43.50. Canner and low cutter 41.00-42.50.

BULLS: 1-2 1200-2100 lbs. 52.00-58.00, few individual 1 59.00-60.00.

FEEDERS: Several loads medium frame, some large frame 1 1050-1200 lb. steers 69.50-71.00.

Valley Livestock

Valley Stockyards
Athens, Pa.

Monday, June 30

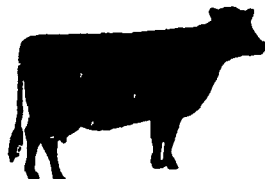
Report supplied by auction
Reported receipts of 124 cows, 26 bulls, 333 calves, 17 heifers, 13 steers, 211 hogs, 19 lambs, 11 sheep. Cattle market reported steady, calf market reported stronger.

Holstein Heifer Calves to 175.00; Veal Calves 69.50-100.50; Bobs, 90-110 lbs. 66.00-108.00; Bobs, 80 and down lbs. 54.00-70.00; Grassers & Feeders 59.00-91.00; Lambs 57.00-62.00; Sheep 14.00-44.00; Hogs, 200-250 lbs. 34.50-43.50; Sows 25.00-34.50; Boars 24.00-26.00; Pigs each 6.00-22.00; Heifers 47.00-55.50; Steers 50.00-55.50; Steers, feeder 54.00-91.00; Bulls 48.00-60.50; Cows, utility 47.75-50.50; Cows, fat 43.00-46.00; Cows, medium 41.75-47.00; Cows, poor or small 30.00-44.00; Horses 155.00-540.00; Ponies 30.00-100.00; Goats 13.00-47.50.

G&M Livestock Market

Monday, June 30

Report supplied by auction
STEERS: Dairy cows 760.00 to 1595.00, High Choice and Prime 65.00-67.50, Good to Choice 63.00-65.00, Standard to Good 58.00-63.00. Feeder Pigs 15-25 lbs. 10.00-



SECHLER'S POULTRY, INC.

BUYERS & SELLERS OF LIVE

Leghorn, Medium, Heavy Fowl, Broilers & Roosters

We use our own live haul ngs

COVERING EASTERN U.S. & CANADA

CALL 215-488-7617 for price quotes.

Box 55, Strausstown, PA 19559

SCOTT SECHLER



PERKIOMENVILLE LIVESTOCK & SALES

Perkiomenville, PA
Sale Every Monday

Egg Auction 12 Noon
Dairy Cows 2 P M
Hogs 4 P M

Steers Bulls Cows
Starting at 5 P M

Also

Flea Market
starting at daylight
PH 215-234-4733

19.00, Feeder Pigs 25-50 lbs. 18.00-30.00.

HEIFERS: High Choice and Prime None, Good to Choice 58.00-62.00, Standard 49.50-58.00

FEEDER STEERS: Good to Choice 300-550 lbs. 60.00-79.00, Standard to Good 500-700 lbs. 55.00-70.00.

Compared to Last Monday Market report Cows lower; steers higher, hogs steady

BULLS: 1108-1859 lbs. 56.00-62.10, 714-1100 lbs. 53.00-58.75.

COWS: High Choice &

Prime 48.00-51.50, Good 45.00-48.00, Utility 43.00-45.00, Cutters 40.00-43.00, Cannors down to 38.00.

CALVES: High Choice 90.00-101.00, Good to Choice 80.00-90.00, Standard to Good 70.00-90.00, Utility 50.00-70.00. farm Calves Holstein Bulls 90.00-122.00, Farm Calves Holstein Heifers 125.00-177.50.

HOGS 200-240 lbs. 41.00-

43.60, 170-280 lbs. 36.00-40.50

SOWS: 25.00-34.50

BOARS: 20.00-29.00.

SHEEP: 20.00-36.00.

J. B. KELLER & BRO. DAIRY COWS



Mount Joy, Pa. 17552

REGISTERED HOLSTEIN COWS & HEIFERS

ROUND OAK RAG APPLE ELEVATION, 1st calf due 11-25-80 to Glen-Valley Star. Dam Kit Builder, 3-2, 345, 19,530, 705, 3.6.

WHIRLHILL KINGPIN, 1st calf due 8-5-80 to Straight-Pine Elevation Pete. Dam 83 pt. Gent.

GLENDELL ARLINDA CHIEF, 1st calf due 9-28-80 to Triple Threat - Red. Dam Transmitter.

ROUND OAK RAG APPLE ELEVATION, 1st calf due 1-25-81 to Willow. Dam 83 pt. Transmitter, 5-0, 305, 19,908, 702, 3.4.

ROUND OAK RAG APPLE ELEVATION, 1st calf due 9-10-80 to Elev. Son.

BROOKFIELD LAMPLIGHTER-TWIN, 1st calf due 11/12/80 to Paclarar Bootmaker. Dam 83 pt. Lucky 3-2, 360, 23,090, 933, 4.0.

BROOKFIELD LAMPLIGHTER-TWIN, 1st calf due 11/21/80 to Pack-Herd Timothy Dam Kingpin 2-2, 288, 15,361, 493, 3.2.

SEILING ROCKMAN, 3rd calf due 7-17-80 to Stacy.

LIME-HOLLOW ADMIRAL DE KOL, 1st calf due 10-13-80 to Plushanski Persuader. Dam Imperial Chief, 6-3, 305, 16,176, 693, 4.3.

WESTMORELAND BRIGADIER, 1st calf due 10-22-80 to Willow.

REGISTERED BULLS

ROUND OAK RAG APPLE ELEVATION, born 4-19-79. Dam 85 pt. Ivanhoe Jewel, 2-5, 348, 16,525, 581, 3.5. 2nd Dam EX 90 Roybrook Telstar, 4-0, 311, 20,652, 938, 4.5.

PENSTATE IVANHOE STAR, born 6-29-79. Dam 85 pt. Collins Crest Majesty, 4-11, 365, 18,523, 684, 3.7.

RIPPCHEN BOOT-NICK, born 8-14-79. Dam 87 pt. Astronaut, 4-9, 305, 19,240, 778, 4.1.

RANSOM-RAIL PACEMAKER, born 8-31-79. Dam 85 pt. Ivanhoe Star, 5-7, 305, 19,919, 769, 3.9.

WESTMORELAND BRIGADIER, born 7-4-79. Dam 84 pt. Ivanhoe Star, 4-6, 305, 20,298, 743, 3.7.

POVERTY-HOLLOW MILESTONE, born 12-8-79. Dam 87 pt. Elevation, 6-0, 353, 20,901, 927, 4.4.

ROUND OAK RAG APPLE ELEVATION, born 3-10-80. Dam Pawnee Farm Arlinda Chief.

Transportation and financing available.

STEVE KELLER
717-653-2284

BOB KELLER
717-653-1523

Office: 717-653-4851

SUPER DOL

THE AMAZING "TIME RELEASE" BUFFER

CONTAINING MAGNESIUM FOR RUMINANTS



CALL OR WRITE: WMB CORPORATION

960 E. GREEN ST., PASADENA, CA. 91106 • (213) 449-1667
5360 MERLE HAY RD., DES MOINES, IA. 50323 • (515) 282-5415
141 FIELDCREST AVE., EDISON, N.J. 08817 • (201) 387-2082