

# WHAT'S NEW

## Automatic hog system announced

ARLINGTON HEIGHTS, Ill. — An automated hog feeding system designed to make feeding chores more efficient, faster, and easier to monitor has been announced by A. O. Smith Harvestore Products.

The all-new system consists of a batch mixer, a cleated belt grain conveyor unique to automated feed handling, and a hammermill. These products work together in the processing, measuring, and delivery of accurately formulated swine rations.

Providing 30 cubic feet of mixing capacity, the new model 410 stationary batch mixer comes complete with an integral Toledo brand mechanical scale graduated

in one pound increments up to 1000 pounds.

Exact amounts of high-moisture grain, supplement, and other ingredients chosen by the operator for his swine ration are accurately weighed as they are added to the mixer. The scale allows precise monitoring of feed. When the desired amount of ingredient has been added to the mixer box, material flow is cut off.

The model 410 batch mixer, which features the three auger system completely and uniformly mixes the ration in three to five minutes.

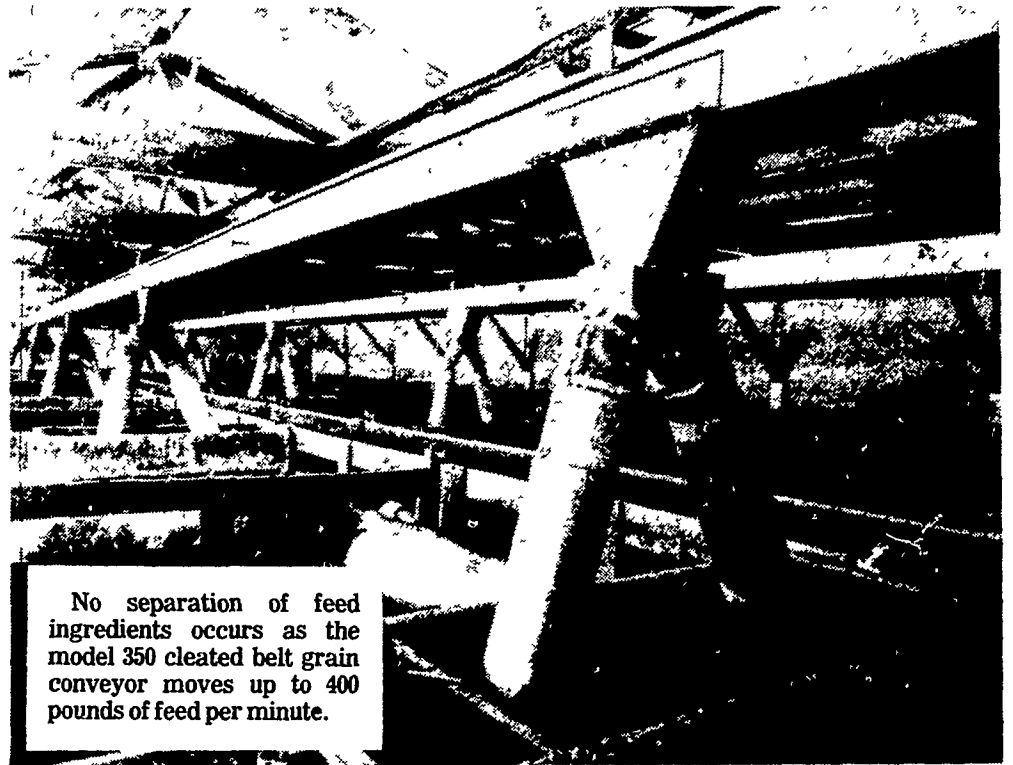
Although the batch mixer is covered to minimize dust during mixing, a special

access door is provided to allow addition of premixes and medication. This opening is covered with an expanded metal safety grate.

An optional input auger attachment allows mounting of a hammer mill or roller mill. The input auger pulls grain directly from the mill into the mixer, eliminating need for a filling conveyor. A vertical auger adaptor which may be mounted under the batch mixer is also available. The adaptor allows the mixed ration to be transferred from the mixer to overhead conveying equipment.

The model 870 hammer mill may be used with the model 410 mixer's optional auger extension. Designed to handle high-moisture grain, the hammer mill is compatible with other Harvestore automation equipment so that it can be integrated into a complete livestock feeding system.

The mill utilizes 18 hard faced hammers, staggered for maximum efficiency. The hammers are 4-way reversible for long life and the rotor assembly is spin balanced for safe, smooth operation.



No separation of feed ingredients occurs as the model 350 cleated belt grain conveyor moves up to 400 pounds of feed per minute.

Operators of the hammer mill can control the flow of grain into the mill with the aid of a gate control lever. The unit is also equipped with a specially designed steep bottom hopper to assure even grain flow and a convenient access door that allows easy changing or rotating of the screen. The screen itself is full circle with standard 5/16-in. perforations. Optional screens are available with perforations of 3/16, 1/4, and 3/8 in.

The standard hammer mill is fitted with a 10-h.p., single-phase motor for capacities up to 100 pounds per minute. An optional 15-h.p., three-phase motor is available to give capacities up to 120 pounds per minute.

The new model 350 cleated belt grain conveyor moves up to 400 pounds of feed per minute. The cleated belt design provides complete clean-out and eliminates separation of feed ingredients. No other manufacturer of automated feed handling equipment has employed a cleated belt in ration conveying.

This quiet and efficient product fits most hog operations and works well in many other livestock feeding

applications. It is easier to install, has higher capacity, requires less energy, and is safer than conventional grain conveying equipment. Its low profile adapts it to ceiling installation.

Troughs for the model 350 are available in 5-foot and 10-foot sections. The unit's 6-inch wide PVC (polyvinyl chloride) belt has 2-inch cleats spaced at 8-inch intervals and constructed for minimum friction and stretch.

Since the cleated belt pulls feed along its bottom, the ration stays uniformly mixed and additives are not separated. Feed discharge drops can be installed at any location along the conveyor for multiple discharge points.

SERVING THE FARMERS FOR 107 YEARS



HAMBURG SAVINGS and TRUST COMPANY

Hamburg, PA — Phone: 215-562-3811  
A FULL SERVICE BANK

# KATOLIGHT DEPENDABLE EMERGENCY POWER

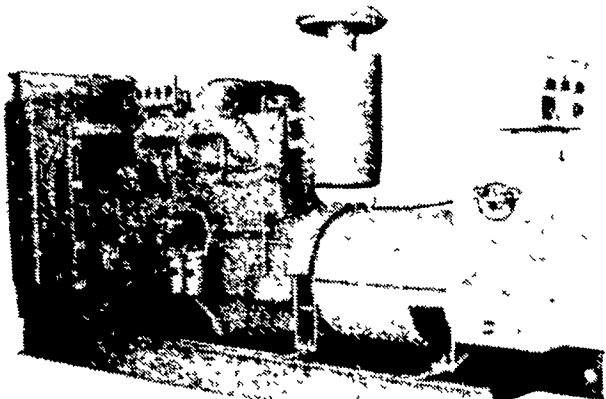
• Dairy

• Poultry

• Hog

for...

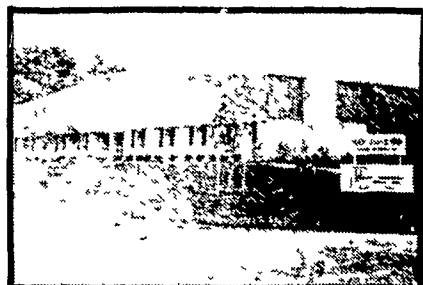
Controlled Environment,  
Automated Feeding Operations



Katolight Standby Power Packages give you the finest in power outage protection. Wide choice of models in sizes to 250 KW. Automatic or push-button transfer, gasoline or diesel fuels. Extra overload capacity. Models for irrigation, also.

## Low Cost Protection Agri-Alternator

Could pay for itself in one blackout. Can be run continuously until power is restored. PTO drive. Use for portable power, too. Sizes to 150 KW.



**H** SHEY EQUIPMENT COMPANY, INC.

SYCAMORE IND. PARK  
255 PLANE TREE DRIVE  
LANCASTER, PA 17603  
(717) 393-5807

Route 30 West At  
The Centerville Exit

## THE TASK MASTERS



### John Deere "Little-Big" Diesel Tractors

These John Deere Tractors stand ready to execute jobs in any working environment — farming, grounds maintenance and light commercial. Three models — 850, 950 and 1050 — with respective horsepower of 22, 27 and 33 at the PTO\*. All have a 3-cylinder wet-sleeve diesel engine . . . 8 speed transmission . . . differential lock . . . color-coded controls . . . and more. The 3-point hitch handles Category 1 implements . . . and features load-and-depth control on the 1050. The 540-rpm PTO (Continuous-running on the 1050) engages with a conveniently located lever.

The all-new 1050 has a turbocharged engine for more power, smoother operation. The 1050 and 950 can also be ordered with mechanical front-wheel drive for added traction.

See us today for a demonstration. With more than 20 implement options, these "little-big" tractors truly are task masters.

\*Maximum PTO horsepower measured at 2600 engine rpm for the 850 2400 engine rpm for the 950 and 1050 by official test

ADAMSTOWN EQUIPMENT INC.

Mohnton, RD2, PA 19540  
(near Adamstown)  
Phone: (215) 484-4391



A. B. C. GROFF, INC.  
New Holland, PA  
Phone: (717) 354-4191

LANDIS BROS. INC.  
Lancaster, PA  
Phone: (717) 291-1046