

## Lovell crowned during Dairy Week

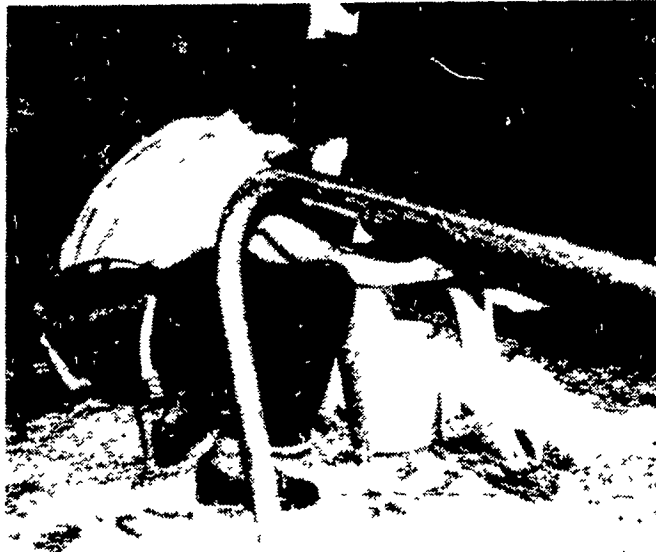
MUNCY — The Lycoming County Dairy Princess Committee and the Pennsylvania Department of Agriculture recently sponsored Lycoming Dairy Week, held June 23 - 28 at Lycoming Mall, Muncy

The week featured numerous dairy related displays and equipment. Various evening events highlighted the dairy industry and included a grand opening ceremony with the Dairy Princess Pageant contestants, as well as local representatives of the sponsoring groups; a dairy fitting and showing demonstration given by the county 4-H Dairy Club; an antique milking equipment,

cream separators, and a butter churning demonstration; ice cream eating and milk drinking contests.

The week culminated with the Fifth Annual Dairy Princess Pageant where Sherrie Lovell, 18, daughter of Mr and Mrs. Fred Lovell of R1 Linden, was crowned 1980 Lycoming Dairy Princess by last year's winner Jenny Fuoss, R2 Montgomery

The grand finale of the week was a celebrity milking contest on Saturday evening with an number of local politicians participating, including Senator Hager, Assemblymen Grieco and Cimmi, Hughesville Mayor, and Pauline Montgomery



Sandra Hartzel, PDA, Williamsport, shows her skill at milking during Lycoming Dairy week.

## Fair season opens

HARRISBURG — Pennsylvania Agriculture Regional Director C Eugene Wingert today announced that the opening of the Middletown Community Fair in Dauphin County will mark the beginning of the fair season in southeast central Pennsylvania.

"The Middletown Community Fair, July 14-19, and the Shippensburg Community Fair in Cumberland County, July 19-26, are always a lot of fun," said Wingert. "County fairs are the best way to get to know why Pennsylvania agriculture is growing better food for your table."

Take the family on a local tour and treat them to a fair.

In addition to being fun, fairs are an education to the wide variety of food grown and processed in our commonwealth.

Other fairs to be held in southeast central Pennsylvania include: the Lebanon Area Fair in Lebanon County, August 4-8; the Carlisle Fair in Cumberland County, August 11-16; the Franklin County Fair, August 17-23; and the Perry County Fair, August 19-23.

In September, the South Mountain Fair in Adams County, September 1-6; the York Inter-State Fair in York County, September 5-13; the Gatz Fair in Dauphin County, September 15-20; the Elizabethtown Fair in Lancaster County, September 15-20; Southern Lancaster County Community Fair, September 17-19; the Ephrata Fair in Lancaster County, September 23-27; and the West Lampeter Community Fair in Lancaster County, September 24-26.

In October, the New Holland Fair in Lancaster County, October 1-4; the Manheim Community Fair in Lancaster County, October 6-10; and the Dillsburg Community Fair in York County, October 16-18.

Pennsylvania's county fairs offer a wide variety of family fun on weekends and summer nights. With the current cost of gasoline, county fairs offer attractive entertainment within easy driving distances.

**3rd Annual Meeting  
Maryland Grain  
Producers Assoc.**  
**Monday, July 21, 1980**  
Meeting and program 1:00 P.M.  
Held at Queen Anne's Co.  
High School  
Centreville, MD  
Followed by a Crab Feast &  
Chicken B-B-Q  
\$3 donation  
For information and tickets contact  
Sherri Bendel  
301-465-4980



1980 Lycoming County Dairy Princess, Sherrie Lovell, R1 Linden, with her parents, Mr. and Mrs. Fred Lovell.

# GEO THERMAL ENERGY

- Utilize The Ground Water Heat on Your Property  
... Wells, Ponds, Pools, etc.

**40% TAX CREDIT**

- ★ Heat ★ Cool
- ★ Provide Domestic Hot Water For Less Than 1/4 The Cost of Oil
- ★ Air or Hot Water Systems

For Information, Contact:

**C.M. DAVID  
& ASSOCIATES, INC.**

400 N. Race St.  
Richland, PA 17087  
717-866-7588 (Call  
717-272-8580 Collect)

— OR —

**HAROLD C. FOSTER**

Box 96A  
Star Route  
Huntingdon, PA 16652  
814-643-0248  
(Call Collect)

