

State cherry growers hold annual meeting

GETTYSBURG — The 1980 Pennsylvania Cherry Queen was crowned, incumbent officers were re-elected and status of the industry assessed at the annual meeting of the Pennsylvania Red Cherry Growers Association held last Friday at the Lamp Post Restaurant, Gettysburg.

President Timothy Weiser, R1, York Springs, presided at the dinner meeting which was attended by 43 fruitgrowers.

Laurie Roth, daughter of Mr. and Mrs. Philip A. Roth, R1, Fairfield, was crowned Pennsylvania Cherry Queen by Raymond Reiter from the Pennsylvania Department of Agriculture. Miss Roth was presented with a bouquet of carnations and \$100 by President Weiser.

The retiring Queen, Miss Leslie Garretson, daughter of Mr. and Mrs. Harold Garretson, R1, Aspers, reported on public appearances which she made during the past year to promote cherries. She was

recipient of a certificate of Recognition from the Pennsylvania Department of Agriculture, presented by Reiter.

In the election of officers for the coming year, the following, all incumbents were elected: Timothy Weiser, R1, York Springs, President; John Lerew, R1, York Springs, Vice-President; and Earl Shutt, R1, Orrtanna, Secretary-Treasurer.

"The major objective of the National Red Cherry Institute in the year ahead is to rebuild the market for cherries", according to Everett Weiser, a Director of the Institute.

He reported that the set-aside pool which has not operated since 1974 and 1975 will operate in 1980 in response to a 247 million pound tart cherry crop.

"We've calculated that 210 million pounds of cherries can be sold in normal market channels" added Earl Shutt, a member of the Cherry Administrative



Laurie Roth, R1 Fairfield, was crowned 1980 Pennsylvania Cherry Queen at the state Red Cherry Growers Association meeting held in Gettysburg.

Board. "This means that approximately 24 percent of the cherry crop will go into the reserve pool" added Shutt.

He said growers are encouraged to participate in the pool but may apply to the CAB by July for diversion by non-harvest.

Shutt pointed out that growers have benefitted by participation in the set-aside point in the last two years which it operated.

Weiser reviewed some of the economic developments which plague the industry at this time.

"Some of the Michigan processors paid too much for cherries in 1979. This has resulted in cherries in inventory currently selling at a loss. One Michigan processor has declared bankruptcy, others are suggesting a co-pack contract with growers for sharing inventory overhead costs."

In his President's report, Weiser called attention to research projects supported by grower funds.

He listed projects underway at Michigan State University, including studies on bacterial canker, nematode control, X-Disease resistance, tart cherry breeding and optimum light distribution in the trees.

"Consumers will be the beneficiary of a larger cherry crop" summarized County Agent Thomas E. Piper.

He reminded growers that failure of federal/state appropriations to keep pace with inflation and diversion of funds to other social programs has resulted in cutbacks in research.

"Unsolved problems showing up in Orchards signal higher food costs in years ahead", he concluded.

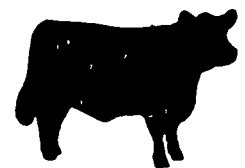
Horse show set for Quentin

HARRISBURG — On Saturday, August 2, 1980, at 9:30 a.m., the Zembo Mounted Patrol, a Unit of the Zembo Shrine Temple, will sponsor a horse show at the Quentin Riding Club, Quentin, Lebanon County.

There will be 30 classes in competition. All entries will be \$6 per class.

The various divisions are as follows: pony hunter division, limit hunter division, children's hunter division, open hunter division, English pleasure division, Equitation Division, and Miscellaneous.

There will be no advanced entry requirements and stalls will be available for a fee.



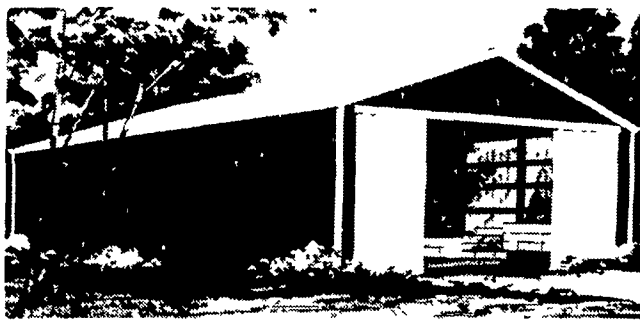
AGWAY

AGWAY BUILDING BONANZA

Now through August 15, 1980

- New Designs
- New Beauty
- New Values

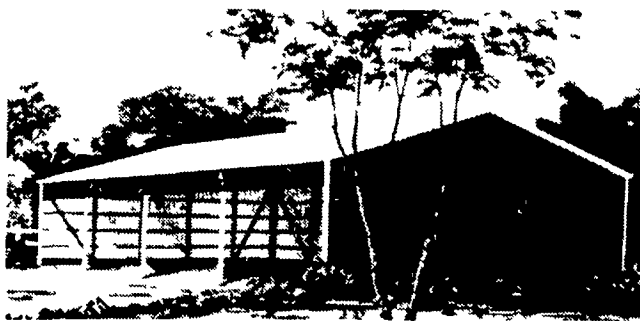
THE NEW FARM UTILITY BUILDINGS



Farm Utility 30

- 30' x 50' x 12'
- clear span design for maximum storage space
- strong, rust-free Alcoa Temper Rib® roofing
- painted steel siding in your choice of four colors
- 14' x 12' sliding door in one end wall

Special Introductory Price **\$6890**



Farm Utility 40 Open

- 40' x 72' x 12'
- built with the same quality materials as the Farm Utility 30
- open front design offers easy access for trucks tractors, equipment—(no end doors)

Special Introductory Price **\$9910**

Also Available Farm Utility 40

- 40' x 72' x 12'
- closed with end door

Special Introductory Price **\$10,835**

Farm Utility 50

- 50' x 72' x 12'
- closed with end door

Special Introductory Price **\$12,830**

Some local codes may require special designs resulting in additional cost—additional options are available

Gutters shown are optional

Buy any one of four specially priced Agway buildings before August 15 and save big. You'll be getting a quality constructed Agway building with the features Agway customers have come to expect

- the Agway 5/40 Timber Column Building Warranty
- finest quality materials
- complete delivered price no hidden costs
- builder's risk insurance
- Agway's own Agri-Lease* financing plan for qualified buyers

Check your local Agway for details or mail the coupon today

Agway Building Department
Box 4853 Syracuse NY 13221

- I am interested in the
- Farm Utility 30
 - Farm Utility 40 Open
 - Farm Utility 40
 - Farm Utility 50

Please send more information

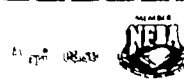
Name _____

Address _____

City/Town _____ State _____ Zip _____

Phone _____

Best time to call _____



SPORTING CHOICE



For 20-mile-a-day comfort, sportsmen choose Red Wing Irish Setters

* Sizes 6-16

Widths AA-EEEE

*Not all sizes in all widths

RED WING



BOOKS SHOE SERVICE
107 E STATE ST
QUARRYVILLE, PA 17566
717-786-2795
CLOSED WEDNESDAYS