

Agronomists hold regional meeting

UNIVERSITY PARK — Crop scientists from the northeastern states and eastern Canada met at Penn State this Sunday through Wednesday. This will be the joint annual meeting of the Northeast Branch, American Society of Agronomy, and the Eastern Branch, Canadian Society of Agronomy.

Theme of the meeting will be "Agronomy in the New Decade: Energy Efficiency and Food Production." Topics got underway with a symposium in the Keller Conference Center Auditorium. Welcoming visitors was Richard E. Grubb, Senior Vice President for University Relations.

"Plant Nutrients - Enough Ahead?" was the symposium topic of Edwin Wheeler, President of the Fertilizer Institute.

"Nitrogen: A Key Element" was presented by Robert W. Sheard, professor of soils at the University of Guelph, Ontario.

Symposium guests heard Glover B. Triplett and D. M. Van Doren, Jr., professors of agronomy at Ohio State University, speak on "Tillage and the Agricultural Challenges of the Next Decade."

Harold R. Klinck, professor of plant science at

Macdonald College, Quebec, Canada, discussed "Plant Breeding in the New Decade."

A choice of tours was offered for the afternoon of June 30 and July 1. One tour June 30 featured two progressive dairy farms in Nittany Valley. The other tour showed visitors some of the major soils in Nittany Valley. Turfgrass research tours and visits to the Rock Springs Agricultural Research Center were featured Tuesday.

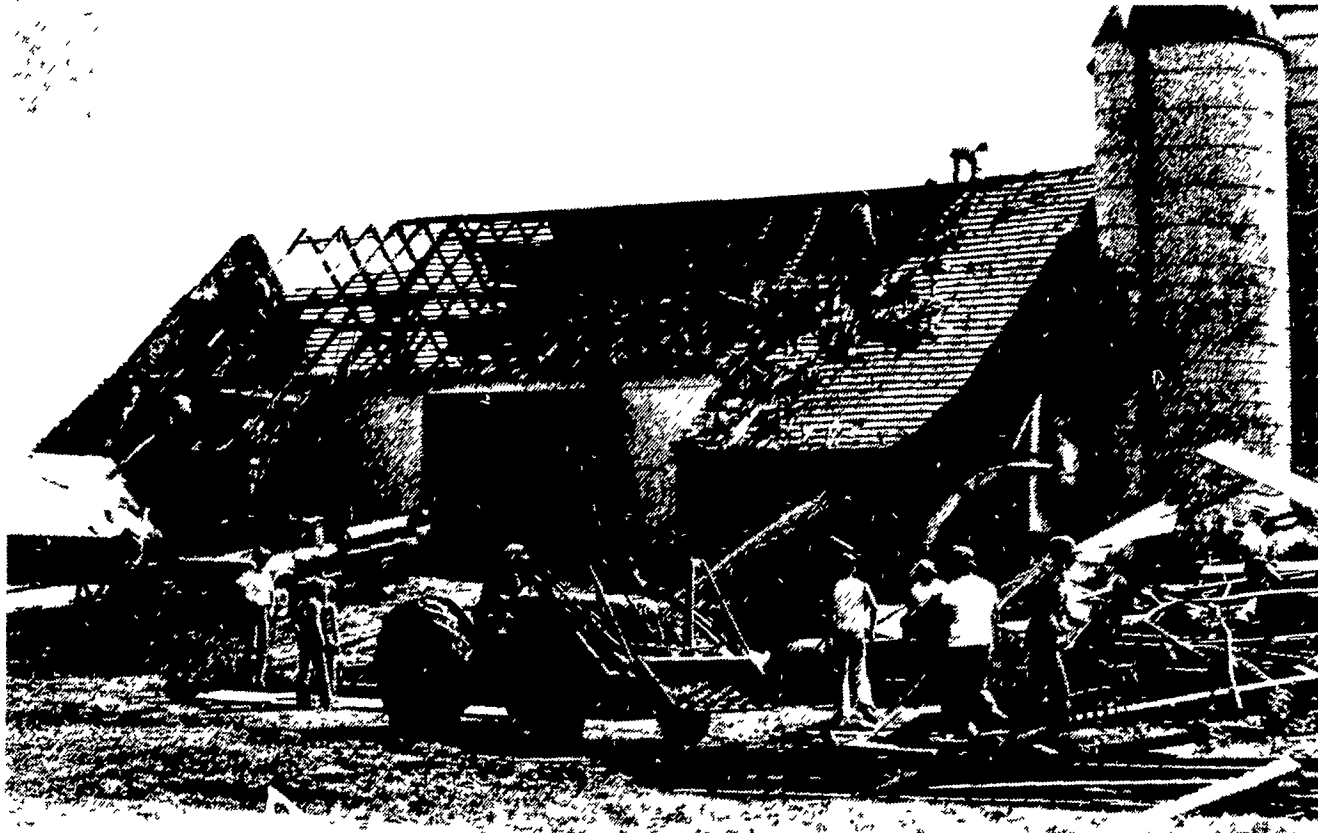
General chairman for this regional meeting of agronomists was James L. Starling, head of the Department of Agronomy at Penn State. Nineteen technical papers were presented by Penn State faculty members and graduate students, as part of the program. The event was attended by 230 professional agronomists, mainly from colleges and universities.

Chester 4-H sheep field day Tuesday

WEST CHESTER - The Chester County Golden Fleece 4-H Club will sponsor a 4-H sheep field day for all county sheep club members on Tuesday, July 8 starting at 10:00 a.m. at the farm of Bill and Joan MacCauley, Atglen.

A full day is planned beginning with 4-Hers fitting their own sheep under the guidance of club leaders. Following a showmanship demonstration and showmanship contest will be judged by Cheryl Moran, county agent.

Following the day's activities, a cookout is planned for 4-Hers and their families.



Entire roof on barn of Martin farm needs to be replaced.



The entire southeast four-bay wall of this barn was blown out by the storm. Farm is owned by Reuben Weaver and is located opposite Pennfield plant along Schoeneck Road. Cattle in barn escaped injury.

Storm

(Continued from Page A18)

women prepared and brought a literal mountain of food for the workers.

Due to the enormity of the destruction and the massiveness of the cleanup effort, the more minor examples of the storm's aftermath, such as the letter in the cornfield, went largely unnoticed.

In a corner eave of the Nolt farmhouse, that was ripped away, frenzied sparrows worked to repair a nest.

A picnic bench was smashed by a falling tree limb.

A decorative cupola and a lightning rod are flattened.

Trees are stripped of many branches

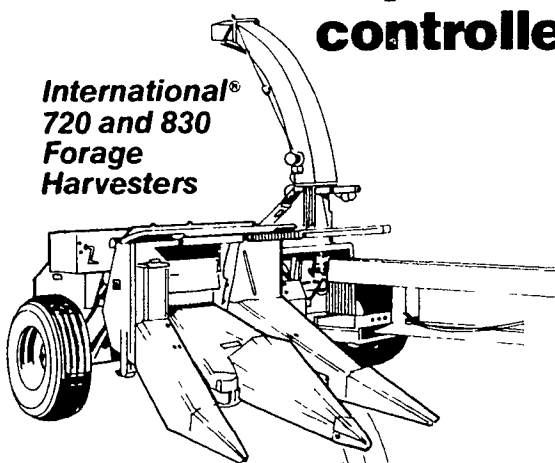
A garden fence is flattened.

FORAGE HARVESTER SALE

Buy Now - No Finance Charge Till April 1, 1981

Get all-crop versatility, plus electrically controlled feeding and discharge

International®
720 and 830
Forage
Harvesters



High capacity Fine-cut performance Simple, easy control All help make your harvest more productive, more profitable Interchangeable quick-attach drive-in crop units for row crops or hay pickup Row crop, 2-row adjustable for wide or narrow rows fits 720 and 830, 3-row narrow for 830 only Same 6-ft hay pickup fits both High speed, high-helix 12-knife cutterheads cut 3/16-in lengths without recutter screen Fingertip electric controls for feeding and discharge

- 720 for tractors up to 130 PTO hp, 830 for tractors up to 175 PTO hp
- Dual electric clutches, remote controlled for start, stop, reverse of feed system
- Large diameter feed rolls automatically adjust to crop volume
- Remote electrical control of discharge deflector and spout direction
- Hydra-Sharp knife sharpener bevels as it sharpens for maximum cutting efficiency

In Stock
Now At
Old Prices:

830 and 720 Harvesters with Two and Three Row Crop Units and Hay Pickups



R.S. HOLLINGER & SON INC.

113 W. Main St., Mountville
INTERNATIONAL QUALITY PARTS
FACTORY TRAINED SERVICEMEN
In York County Call Our Salesman: CHARLES M. LEHMAN - 717-755-6486

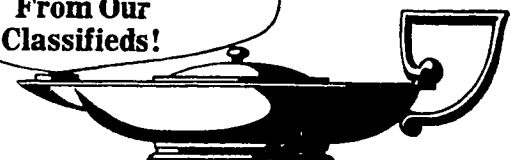
Phone 717-285-4538
Mon. thru Thurs. 7 to 8
Fri. 7 to 5:30, Sat. 7 to 3

Finance plans available.

**INTERNATIONAL
AGRICULTURAL
EQUIPMENT**

IT'S MAGIC
How quickly
You Get Results
From Our
Classifieds!

PHONE
717-394-3047
or 717-626-1164



SANDBLASTING REPOINTING WATERPROOFING

From repairing drafty, leaking walls to complete stucco removal and repointing, exterior restoration of farmhouses is my specialty!

REASONABLE RATES
JAMES H. DOSTER
507 South Spruce Street
Lititz, Pennsylvania 17543

For information or a free estimate return coupon below

Name _____

Address _____

City _____ State _____ Zip _____

Phone: Area _____

Directions to your home: _____