

## Storm damage

(Continued from Page A16)

flattened, along with a couple of smaller buildings.

On the other farm, the southeast four-bay wall of a barn built in the late 1700's was blown out. The violent storm scared cattle back into the barn, or else they would have been buried under the debris in the barnyard.

The livestock on the Nolt farm was not as lucky. The high winds are believed to have caused an electrical short-circuit, which set the barn afire.

The family was able to let out 15 head and firemen worked for eight hours to free 34. But 36 perished

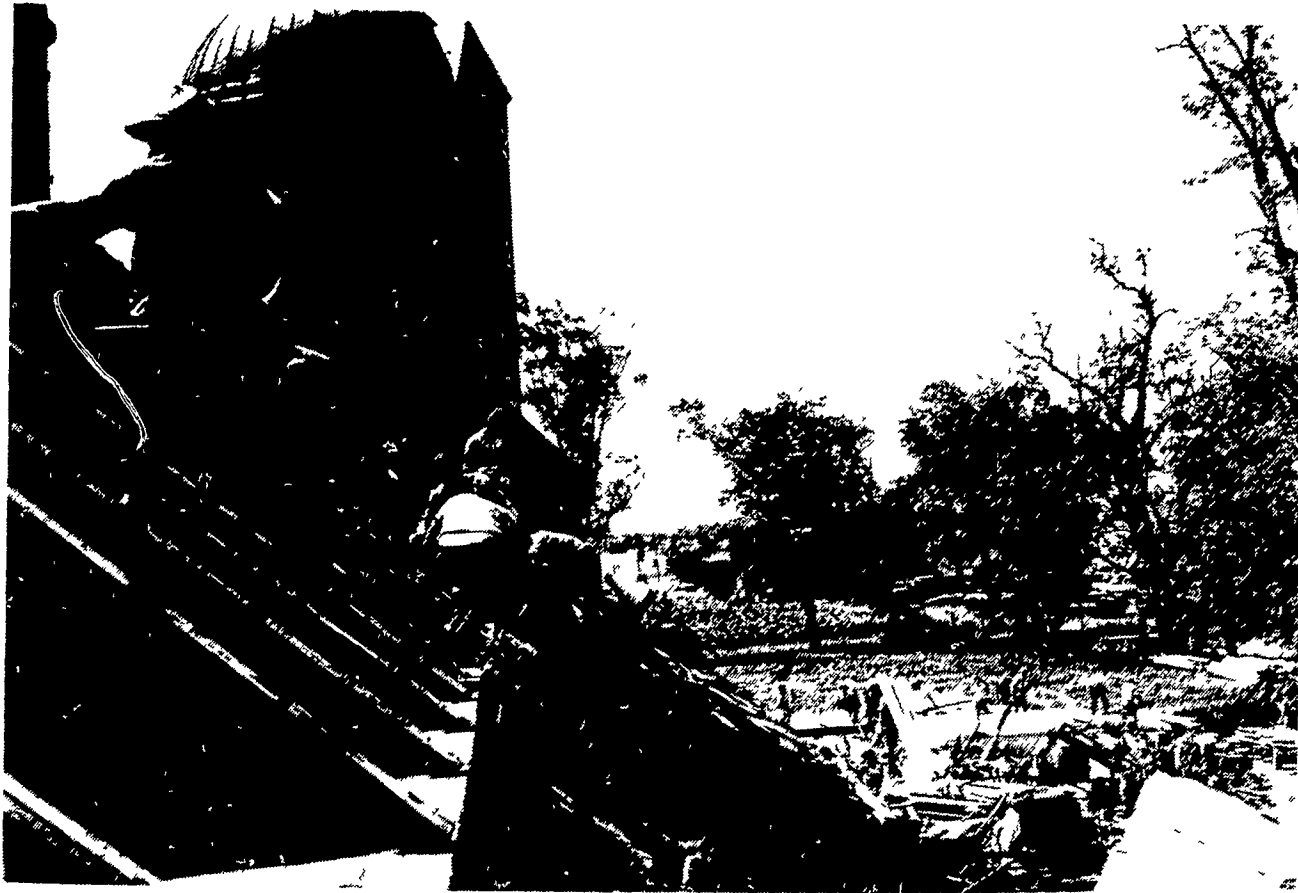
Among other area damages were a home of Levi Zimmerman, along Durlach Road; a barn of Samuel Martin and a large chicken house of J. Elvin Martin.

Earlier this week, hundreds of neighbors and members of the farm community gathered at the damaged farms to clean up debris and begin repairs.

Between the Nolt and Ezra Martin farms alone, there was a small army with chain saws, trucks, wagons, bulldozers, carpentry tools and muscle.

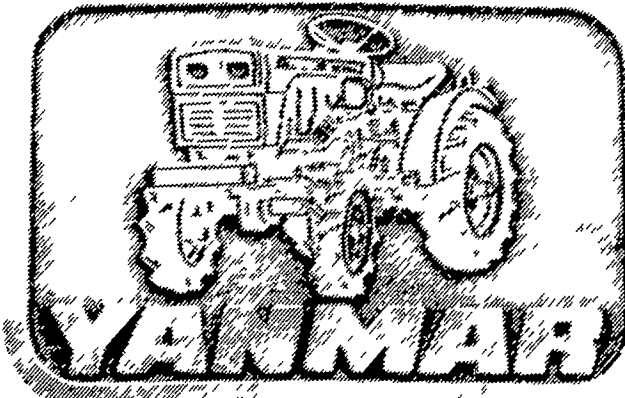
While the men worked to remove the debris, the

(Turn to Page A18)



Emergency repair work continues on two levels of the Martin farm. While some friends and neighbors

work to replace barn roof, others continue to clean up debris below.



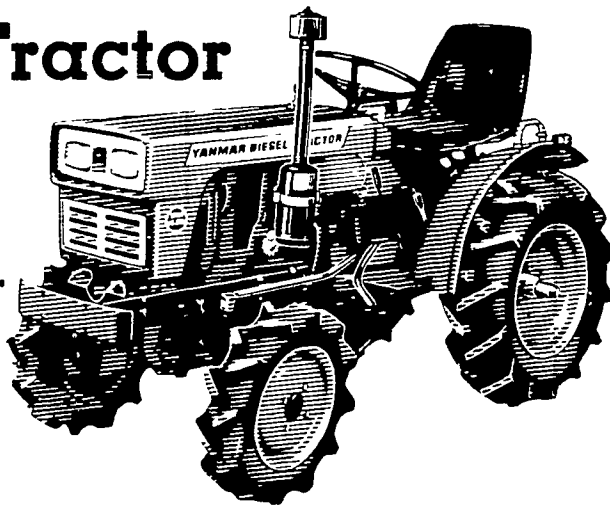
# This Heavy Brass Buckle Is Yours



## Just For Taking A Ride\* On A Yanmar Tractor

Buy Yanmar.  
The High Performance  
Compact Diesel Tractor.

\* Offer available during  
Yanmar special summer  
promotion now through July  
31, 1980.



- For Economy — it's easy on fuel
- For Durability — it's ruggedly built, with big tractor features
- For Versatility — you have a wide choice of attachments
- For Power — choose from 13.5 to 33 HP models, 2 and 4 wheel drive



SEE THE

All **NEW** Shift On-The-Go.  
Live PTO. Powerful, trouble-free  
18 HP 3-cylinder Yanmar  
Diesel. 2 WD & 4 WD.

COME IN TODAY OR  
CALL US FOR AN  
APPOINTMENT

We'll give you the demonstration  
ride that proves Yanmar's  
superiority . . . and order your  
belt buckle!

**"SERVICE IS OUR MOTTO"**

## LAWN CARE OF PA.

Sales & Service

Martindale, PA 17549  
1 mile North of Martindale  
on Grist Mill Road  
Ph: 215-445-4541

Mon., Tues., Thurs., Fri. 8-8  
Wed. 8-5  
Sat. 8-2

"A little out of the Way  
But a lot less to Pay"



**MILLER DIESEL INC.**

6030 Jonestown Rd.  
Harrisburg, Pa. 17112  
717-545-5931  
Interstate 81 Exit 26

Diesel fuel injection and turbo-charger specialists.

Locally owned and operated  
with over 22 years in business.

Authorized Sales & Service For:

- American Bosch
- Robert Bosch
- Roosa Master
- Airesearch
- CAV
- Simms
- RotoMaster

We Also Service:

- IHC • Caterpillar • Cummins
- General Motors injectors • Allis Chalmers
- Blowers, governors etc. • Bacharach Tools

Daily shipments by UPS, Parcel Post, or our  
representative who is in area regularly.

# WHEAT WANTED!

## EARLY CUT WHEAT FOR MANUFACTURING OF SNAVELY'S BEST NATURAL ALL PURPOSE FLOUR

Light Soft & Lively Flour

For Better Baking  
Cakes, Pies, Buns & Bread

Milled From Natural Wheat  
Nothing Added

No Waiting —  
Fast Unloading and Drying

**SNAVELY'S MILL, INC.**

333 Snavely Mill Rd.  
Lititz, Pa. 17543 Ph: 717-626-6256