

## Professors return for high school education

LITITZ — Recently a group of Penn State professors visited a number of high school agriculture programs in the Commonwealth. All the members of the group are faculty members of the College of Agriculture at Penn State.

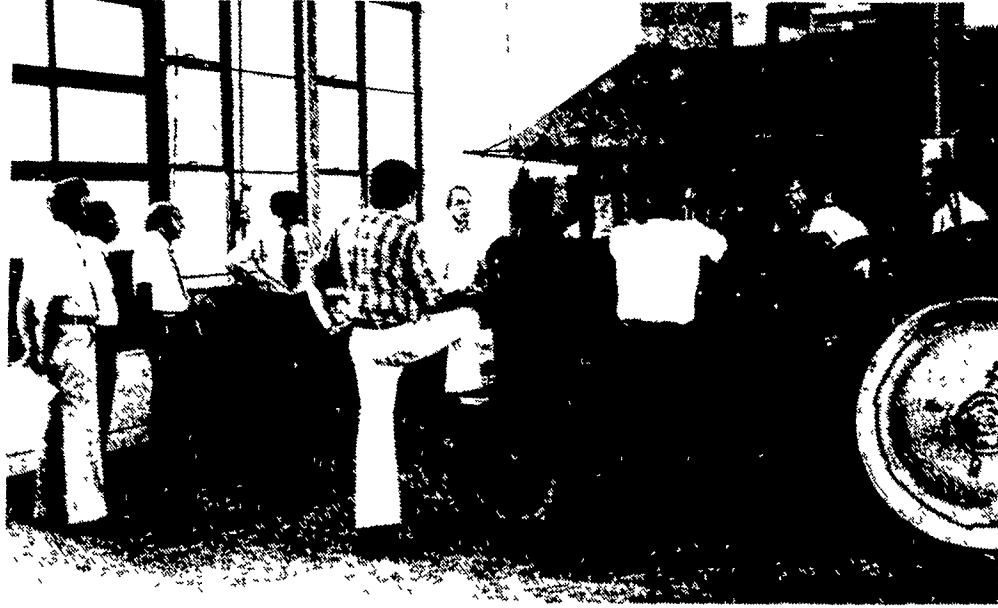
Participants in the traveling seminar were: Leon Johnson - agronomy, Paul Anderson - ag engineering, Jim Hilton - ag engineering, William Kjølgaard - ag engineering, Edmund Holcomb - horticulture, Chiko Haramaki - horticulture, Robert Nuss - horticulture, John Harkness - vet science, Robert Swope - assistant dean, Richard F. Stinson - ag ed, and James H. Mortensen - ag ed.

The purpose of the seminar was to acquaint the faculty members with an overview of what is being taught in public high school agriculture programs today. Items discussed included: curriculum offerings, student enrollments, teacher work schedules, course selection and educational facilities.

It is hoped this exposure will allow the faculty members to revise their own course offerings to better prepare college students for careers in agriculture education.

The schools visited during the first day of the seminar were all located in Lancaster County.

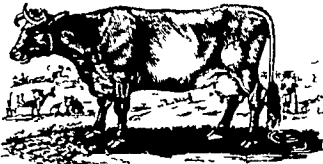
They include Warwick High School, Lititz; Lancaster County AVTS, Brownstown; and Eastern Lancaster County School District, New Holland. Schools visited the second



Back in the shop at Warwick High School, Lititz, are from left, Robert Swope, Chiko Haramaki, Robert Nuss, Edmund Holcomb, James H. Mortensen, Dale Gerber, James Hilton, John Harkness, Paul Anderson, and Leon Johnson.



Warwick teacher Dale Gerber made sure the professors were well aware of the school vo-ag program. The professors visited a number of Lancaster County schools. Photos by Ken Clark.



day were, Owen J. Roberts, Pottstown; Western Montgomery County AVTS, Limerick; and W.B. Saul High School, Philadelphia.

James Mortensen, Associate Professor of Agriculture Education was the seminar's coordinator.

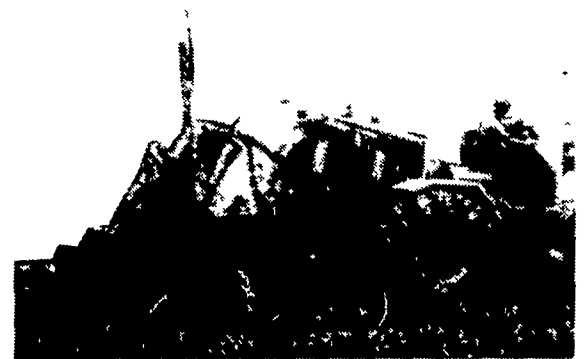


- ★ GALVANIZED PLAIN and GALVANIZED PAINTED ROOFING & SIDING
- ★ CHANNEL DRAIN ROOFING
- ★ SPOUTING
- ★ 1½" SUPRATHANE FIBERGLASS INSULATION in rolls 3½"x15", 3½"x24", 6"x15", GOOD PRICES
- ★ BLOWN IN INSULATION FOR CEILINGS

### FETTERVILLE SALES

RD #2 East Earl, PA 17519  
Phone - 717-354-7561  
Rt. 322 & Fetterville Road

## DRAINAGE PROBLEMS?



**COCALICO EQUIPMENT HAS THE TWO MACHINES TO HANDLE YOUR DRAINAGE PROBLEMS.**

★ Both Machines Equipped with Laser Beam Grade Control

### Drainage Pays High Returns

Investment	Typical Annual Return
Land Drainage	21-46%
Farm Buildings	3-23%
Farm Land	11%
Stocks	7-4%
Bonds	6-1%

### COMPARE

Even with the conservative figures shown here, it's obvious that land drainage should top farmers' lists of investment priorities.

★ We Stock Heavy Grade Tubing which Exceeds SCS Specifications. In sizes 4", 6", 8", 10" and 12".

**NOW AVAILABLE  
15" & 18" Tubing**

★ Also Pipe And Fittings For Tile Outlet Terraces.

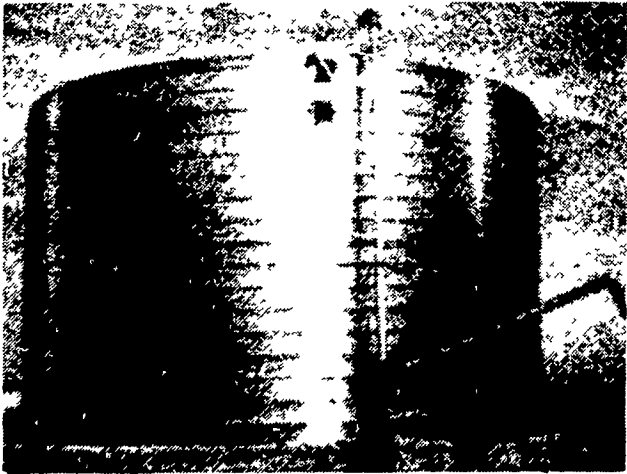


## COCALICO EQUIPMENT CO.

DRAINAGE & EXCAVATING  
RD #3, DENVER, PA 17517

PH: 215-267-3808

# Lipp.



## For Liquid Manure Storage.

Unique construction methods mean Lipp builds unique manure tanks—in fact, the strongest tank on the market today

We roll our tanks upward on location from coils of steel and seal the coil edges with a unique double fold lock seam. The result is a bottless, smooth inner wall tank in 12 to 90 foot diameters and up to 900,000 gallon capacities. Interiors can be epoxy or Black Klad with aluminized or galvanized exteriors. And construction is quick.

We re Lipp. We re different and we re better. Storage is our specialty. Call or write today and get more details on the strongest manure tank available.

# Lipp.

**CHESTER STOLTZFUS**

Sales Representative

Route 2 Watsonstown, PA 17777  
717-649-5321