

Livestock market and auction news

Baltimore USDA

West Friendship, Md.
Monday, June 23

Report supplied by USDA
CATTLE 275: Slaughter steers and heifers firm to \$1.00 higher Cows \$1.00-2.00 lower, instances 2.25 lower. Bulls 1.00 higher. Supply 25% slaughter steers and heifers, 50% cows, 20% feeders, balance bulls.

SLAUGHTER STEERS: Choice 2-4 1050-1270 lbs. 62.35-63.60; several Good & Choice 2-3 1100-1175 lbs. 61.25-62.00. Good 2-3 1000-1375 lbs. 56.25-60.50; Standard and Good Holsteins 2-3 1000-1550 lbs. 51.10-55.10.

SLAUGHTER HEIFERS: Choice 2-4 900-950 lbs. 59.85-61.50; Good & Choice 2-3 900-1000 lbs. 58.00-59.10; Good 2-3 800-1200 lbs. 54.50-58.00

COWS: Utility 1-3 43 50-49 50; couple to 50 50 Cutter 1-2 40.85-46.60.

BULLS: YG-1 1000-1900 lbs. 52.75-59.85. Extremely High Dressing individual 1755 lbs. 65.50.

FEEDER CATTLE: Steers - Medium Frame #1 800-1000 lbs. 61.35-64.50; Bulls Medium Frame #1 270-445 lbs. 73.00-80.50; Heifers Medium Frame #1 couple 400-465 lbs. 59.50-64.00; few 500-575 lbs. 56.75-61.75.

HOGS 600: Barrows & Gilts 2.00-2.25 higher than last Wednesday. US 1-2 200-240 lbs. 40.00 to mostly 40.25-40.50; US 2-3 230-250 lbs. 39.50-40.25.

SOWS: Firm to \$1.00 higher. US 1-3 300-600 lbs. 27.00-28.50, few 29.00.

WEAL AND CALF AUCTION: 35: Choice 115-275 lbs. vealers 83.00-91.00; individual 215 lbs. 101.00; few Good & Choice 85-115 lbs. 61.50-74.00; calves returned to farm 84.00-96.00, individual 106.00.

SHEEP AUCTION: Lot Choice spring slaughter lambs 87 lbs. 62.25.

Martinsburg Auction

Monday, June 23

Report supplied by auction
CATTLE 178: Choice slaughter steers 62.00-66.00, Good 60.00-64.10, Standard 55.00-60.00, Utility 52.00-58.00. Good slaughter heifers 55.00-64.00, Standard 54.00-60.00, Utility 49.00-57.00. Utility and Commercial

slaughter cows 47.00-53.50, Cutters 46.00-52.50, Canner and Low Cutters 43.00-47.00, Shells down to 41.00. Good slaughter bullocks 58.00-66.75, Standard 55.00-60.00, Utility 50.00-57.00. Yield Grade No. 1 1000-2000 lbs. slaughter bulls 57.00-63.00, one at 71.75, #2, 900-1600 lbs. 55.00-60.00.

CALVES 324. Choice vealers 90.00-98.00, Good 84.00-93.00, Standard and Good 90-110 lbs. 72.00-85.00, 70-90 lbs. 63.00-76.00, Utility 55-100 lbs. 85.00-69.00. Farm Calves: Holstein Bulls 90-120 lbs. 85.00-118.00; Holstein Heifers 85-130 lbs. 120.00-175.00.

HOGS 253 US No. 1-2 200-240 lbs. barrows & gilts 41.00-43.85, No 1-3 195-230 lbs. 40.00-42.00, No. 2-3 260-270 lbs. 40.00-41.00, No 1-3 130-185 lbs. 35.00-40.00. US No. 1-3 300-575 lbs. sows 30.00-34.00, No. 2-3 300-650 lbs. 28.00-32.00. Boars 25.00-29.00.

FEEDER PIGS 147 US No. 1-3 20-35 lbs. feeder pigs 11.00-23.00 per head, No. 1-3 35-50 lbs. 18.50-28.00 per head.

SHEEP 0. NO SALES ON OFFER.

Dewart Auction

Dewart, Pa.

Monday, June 23

Report supplied by PDA

CATTLE 148. Compared with last Monday's market, slaughter steers grading Choice 50 cents-\$1 higher. Slaughter cows about steady. Choice 2-4, 1050-1400 lbs. slaughter steers 62.60-65.10, few 66.75, few Good 57.00-60.10, Standard 53.25-56.25. Few Choice slaughter heifers 60.50-63.25, few Good 55.25-57.00. Utility and Commercial slaughter cows 46.00-51.25, individual 52.50, Cutters 46.75-49.75, few Canner and Low Cutters 42.50-46.00, Shells down to 38.25. Individual Choice slaughter bullock at 59.25, couple Good 55.00 & 57.75. Yield Grade No. 1, 950-1850 lbs. slaughter bulls 54.25-61.00, couple to 66.00.

CALVES 123. Bulk of supply return to farm. Few Choice vealers 106.00-114.00, few Good 85.00-95.00, Standard and Good 70-90 lbs. 74.00-83.00. Farm Calves: Holstein Bulls 85-130 lbs. 85.00-124.00, mostly 95.00-115.00; Holstein Heifers 85-140 lbs. 110.00-135.00.

HOGS 628. Barrows and gilts \$1.50-\$2.75 higher. US No. 1-2 200-240 lbs. barrows and gilts 42.60-43.40, No. 1-3 200-255 lbs. 41.00-42.70. US No. 1-3 250-500 lbs. sows 28.00-32.75, No. 2-3 300-625 lbs. 25.00-28.50. Boars 23.00-27.00.

FEEDER PIGS 143. US No. 1-3 20-35 lbs. feeder pigs 9.50-14.00 per head, No. 1-3 35-50 lbs. 13.00-17.50 per head.

SHEEP 3. Not enough of any one grade to establish a market.

Four States Livestock

Hagerstown, Md.
Wednesday, June 18

Report supplied by auction

SLAUGHTER Fed Steers active! \$1.00 higher Choice 61.00-65.50; Good 57.00-60.50; Medium 56.00 Down. Heifers Good 54.00-56.00; Medium 50.00-56.00. Cows Good run, steady prices. High Yield 50.00-54.75; Average 47.00-50.00; Big Middle 43.00-46.00; Fatty Hfr. 41.00-44.00; Shelly 43.00 Down. Fat Bulls Good demand. Choice 60.00-63.00; Good 57.00-60.00; Medium 54.00-57.00. Veal Calves Choice 90.00-98.00; Good 82.00-90.00; Medium 75.00-81.00; Farm Hfrs. to 147.50; Farm Bulls to 125.00. Lambs \$2.00 lower. Choice 64.00-67.00; Good 62.00-65.00.

STOCKER: Steers 300-550 lbs. Scarce. Choice 75.00-80.00; Good 70.00-75.00; Medium 60.00-70.00. Steers 600-850 lbs. Choice 65.00-70.00; Good 60.00-65.00; Medium 60.00 Down. Heifers (All Weights) Choice 58.00-66.00; Good 52.00-57.00; Medium 48.00-51.00; Dairy Type to 95.00. Bulls 300-550 lbs. Choice 70.00-80.00; Good 60.00-70.00. Dairy Cows to 765.00. Springing Heifers to 820.00. Pigs, Hd. Large run. 20-30 lbs. 8.00-15.00; 30-60 lbs. 15.00-20.00. Shoats by Lb. to 37.50. Slaughter Hogs \$4.00 higher. 200-230 lbs. 37.60-38.60; 240-260 lbs. 37.00-38.10; 180-195 lbs. 33.00-36.00. Sows 350-600 lbs. 27.00-28.75; 250-350 lbs. 25.00-30.00.

FEEDER PIGS 261. US No. 1-3 25-50 lbs. feeder pigs 48.00-62.00 cwt., No. 1-3 46.00-59.00 cwt.

SHEEP 105. Good & Choice 60-95 lbs. spring slaughter lambs 50.00-59.00, few to 65.00, few 25-45 lbs. 73.00-92.50. Slaughter ewes 11.00-26.00, few to 35.00.

GOATS 14. Few Large Goats 31.00-56.00 per head, large kids 16.00-31.00 per head.

FEEDER CATTLE: Steers few Large Frame No. 1 350-550 lbs. 60.00-65.00. Few Medium No. 2 500-650 lbs. 45.00-55.00 Bulls few Medium frame No. 2 500-700 lbs. 50.00-60.50.

CALVES 64 Vealers few Choice 90.00-95.00; few Good 78.00-89.00; Standard & Good 90-120 lbs. 67.00-74.00; few 70-90 lbs. 60.00-63.00; few Utility 55-125 lbs. 52.00-6.00.

FARM CALVES: Hol. Bulls 85-120 lbs. 80.00-106.00, Hol. Heifers 85-125 lbs. 95.00-120.00 Beef Cross bulls & Heifers 85-120 lbs. 85.00-100.00.

HOGS 139 Barrows and gilts steady. US No 1-2 200-225 lbs. 40.50-41.50, No. 1-3 200-250 lbs. 38.00-40.25, few No. 2-3 250-300 lbs. 37.00-39.00, few No 1-3 140-160 lbs. 31.50-34.00; US No 1-3 300-500 lbs. 29.00-33.50. Boars 23.50-27.00.

FEEDER PIGS 25: US No. 1-3 35-45 lbs. 13.00-22.50 per head

SHEEP: 27 Spring sl. lambs Good 75-85 lbs. 52.00-58.00; Sl. ewes 12.00-13.00.

FEEDER PIGS 25: US No. 1-3 35-45 lbs. 13.00-22.50 per head

SHEEP: 27 Spring sl. lambs Good 75-85 lbs. 52.00-58.00; Sl. ewes 12.00-13.00.

FEEDER PIGS 25: US No. 1-3 35-45 lbs. 13.00-22.50 per head

SHEEP: 27 Spring sl. lambs Good 75-85 lbs. 52.00-58.00; Sl. ewes 12.00-13.00.

FEEDER PIGS 25: US No. 1-3 35-45 lbs. 13.00-22.50 per head

SHEEP: 27 Spring sl. lambs Good 75-85 lbs. 52.00-58.00; Sl. ewes 12.00-13.00.

FEEDER PIGS 25: US No. 1-3 35-45 lbs. 13.00-22.50 per head

SHEEP: 27 Spring sl. lambs Good 75-85 lbs. 52.00-58.00; Sl. ewes 12.00-13.00.

FEEDER PIGS 25: US No. 1-3 35-45 lbs. 13.00-22.50 per head

SHEEP: 27 Spring sl. lambs Good 75-85 lbs. 52.00-58.00; Sl. ewes 12.00-13.00.

FEEDER PIGS 25: US No. 1-3 35-45 lbs. 13.00-22.50 per head

SHEEP: 27 Spring sl. lambs Good 75-85 lbs. 52.00-58.00; Sl. ewes 12.00-13.00.

Utility 46.25-50.25. Sl. cows Cutters 43.75-45.75; few Canner & L. Cutter 39.25-43.50. Sl. bulls few Yield Grade No. 1, 950-1400 lbs. 55.75-65.25.

FEEDER CATTLE: Steers few Large Frame No. 1 350-550 lbs. 60.00-65.00. Few Medium No. 2 500-650 lbs. 45.00-55.00 Bulls few Medium frame No. 2 500-700 lbs. 50.00-60.50.

CALVES 64 Vealers few Choice 90.00-95.00; few Good 78.00-89.00; Standard & Good 90-120 lbs. 67.00-74.00; few 70-90 lbs. 60.00-63.00; few Utility 55-125 lbs. 52.00-6.00.

FARM CALVES: Hol. Bulls 85-120 lbs. 80.00-106.00, Hol. Heifers 85-125 lbs. 95.00-120.00 Beef Cross bulls & Heifers 85-120 lbs. 85.00-100.00.

HOGS 139 Barrows and gilts steady. US No 1-2 200-225 lbs. 40.50-41.50, No. 1-3 200-250 lbs. 38.00-40.25, few No. 2-3 250-300 lbs. 37.00-39.00, few No 1-3 140-160 lbs. 31.50-34.00; US No 1-3 300-500 lbs. 29.00-33.50. Boars 23.50-27.00.

FEEDER PIGS 25: US No. 1-3 35-45 lbs. 13.00-22.50 per head

SHEEP: 27 Spring sl. lambs Good 75-85 lbs. 52.00-58.00; Sl. ewes 12.00-13.00.

Belleville Auction

Wednesday, June 25

Report supplied by PDA

CATTLE 123. Compared with last Wednesday's market, slaughter cows \$2-\$4 lower. Few Good slaughter steers 55.00-61.10, few Standard 53.00-55.85. One Good slaughter heifer at 55.00, individual Utility at 54.10. Utility and Commercial slaughter cows 45.75-49.75, couple to 50.75, few Cutters 46.50-49.50, Canner and Low Cutters 42.25-45.50, Shells down to 40.00. Yield Grade #1, 850-1550 lbs. slaughter bulls 53.50-63.60.

CALVES 157. Bulk of supply return to farm. Few Good and Choice vealers 78.00-90.50, Standard and Good 70-90 lbs. 67.00-76.00. Farm Calves: Holstein Bulls 85-125 lbs. 76.00-113.00; few Holstein Heifers 85-100 lbs. 104.00-117.00.

HOGS 310. Barrows and gilts \$2 higher. US No. 1-2 200-240 lbs. barrows and gilts 41.75-42.60, one lot 42.85, No. 1-3 200-250 lbs. 40.10-42.10, No. 1-3 150-165 lbs. 28.00-33.25. US No. 1-3 300-500 lbs. sows 26.00-32.00, No. 2-3 400-600 lbs. 23.00-27.00. Boars 19.50-23.25.

FEEDER PIGS 379. US No. 1-3 20-35 lbs. feeder pigs 12.50-21.50 per head, No. 1-3 35-50 lbs. 21.00-28.50, few lots 75-100 lbs. 33.00-39.00 per head.

Indiana Livestock

Thursday, June 26

Report supplied by PDA

CATTLE 82: Sl. steers few Choice 60.00-63.50, few Good 57.25-59.50; few Standard 54.00-57.00; Sl. heifers Good individuals 55.25-56.00; individual Standard 51.25 few

Utility 46.25-50.25. Sl. cows Cutters 43.75-45.75; few Canner & L. Cutter 39.25-43.50. Sl. bulls few Yield Grade No. 1, 950-1400 lbs. 55.75-65.25.

FEEDER CATTLE: Steers few Large Frame No. 1 350-550 lbs. 60.00-65.00. Few Medium No. 2 500-650 lbs. 45.00-55.00 Bulls few Medium frame No. 2 500-700 lbs. 50.00-60.50.

CALVES 64 Vealers few Choice 90.00-95.00; few Good 78.00-89.00; Standard & Good 90-120 lbs. 67.00-74.00; few 70-90 lbs. 60.00-63.00; few Utility 55-125 lbs. 52.00-6.00.

FARM CALVES: Hol. Bulls 85-120 lbs. 80.00-106.00, Hol. Heifers 85-125 lbs. 95.00-120.00 Beef Cross bulls & Heifers 85-120 lbs. 85.00-100.00.

HOGS 139 Barrows and gilts steady. US No 1-2 200-225 lbs. 40.50-41.50, No. 1-3 200-250 lbs. 38.00-40.25, few No. 2-3 250-300 lbs. 37.00-39.00, few No 1-3 140-160 lbs. 31.50-34.00; US No 1-3 300-500 lbs. 29.00-33.50. Boars 23.50-27.00.

FEEDER PIGS 25: US No. 1-3 35-45 lbs. 13.00-22.50 per head

SHEEP: 27 Spring sl. lambs Good 75-85 lbs. 52.00-58.00; Sl. ewes 12.00-13.00.

FEEDER PIGS 25: US No. 1-3 35-45 lbs. 13.00-22.50 per head

SHEEP: 27 Spring sl. lambs Good 75-85 lbs. 52.00-58.00; Sl. ewes 12.00-13.00.

SHEEP 105. Choice 60-100 lbs. spring slaughter lambs 55.00-61.00, Good 50-80 lbs. 52.00-55.00, Utility 40-70 lbs. 50.00-54.50. Slaughter ewes 25.00-35.00.

Four States Livestock

Tuesday, June 24

Report supplied by Auction

BUTCHER COWS: 1.00-2.00 under last week. High yield 47.75-50.00, few 51.00-54.75; Standard & Utility 44.00-47.00, Canners 42.00-46.00, shelly 42.00 down; bulls 900 to 1100 lbs. 53.00-56.25; Steers Choice to 64.75, Medium and Good 55.00-62.00.

BUTCHER HOGS: 3.00 higher! Strong demand for US #1 & 2's US #1 & 3 215-240 lb 40.00-40.25, 240-260 lb. 39.50-41.00, 195-210 lb. 39.50-40.60, 180-195 lb. 36.50-39.00; Sows 300-600 lbs. 28.00-29.25, 200-300 lbs. 22.50-27.00; Boars 400-700 lbs. 25.50-26.60.

VEAL CALVES: big calves 5.00 lower. Good & Choice 85.00-100.00, Standard 75.00-85.00, Stocky & Thin 60.00-70.00, Killers 80-100 lb. 69.00-75.00, Weak & Rough 68.00 down.

CALVES RETURNED TO FARM Good demand. Holstein Heifers 90-105 lb. 125.00-180.00, 75-90 lb. 90.00-140.00. Holstein Bulls 95-125 lbs. 100.00-115.00, few 90-100 lb. 80.00-100.00. Beef Type 85-110 lbs. to 100.00.

LAMBS: Choice 90-115 lb. 64.00-67.00, Good 57.00-64.00, Medium 50.00-57.00.

STOCK CATTLE: Scarce. Steers Medium & Good to 68.00. Heifers Good 400-700 lbs. 54.00-63.50. Bulls Good & Choice 300-650 lbs. 56.00-65.00.

PIGS AND SHOATS: Steady to lower on Pigs, Shoats higher. By the head 15-30 lb. 7.00-16.00, 30-60 lbs. 15.00-28.00. By the lb. 125-140 lb. 25.00-31.00. St. Boars 190-250 lbs. 23.00-27.75.

Special Feeder Pig Sale

Tuesday, June 24

Madison Mills, VA

Report supplied by VDA

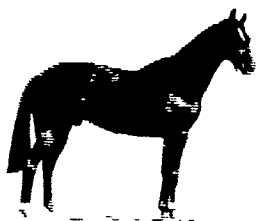
There were 1,339 head sold. All pigs were graded by Representatives of the VDAC's Division of Markets, Livestock Section on USDA standards and sold by the hundredweight.

US 1-2's: 30-49 lbs. 56.50-58.00; 50-69 lbs. 51.50; 70-99 lbs. 43.00-52.50.

US 3's: 30-49 lbs. 52.50-54.50; 50-69 lbs. 50.00-58.00; 70-99 lbs. 47.00.

Utility: 30-49 lbs. 52.00; 50-69 lbs. 54.00.

US 4's: 30-49 lbs. 52.54.

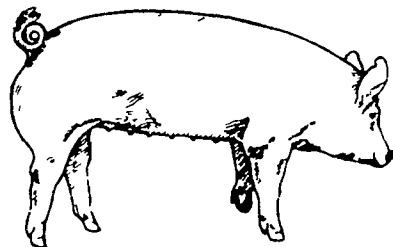


**ONE LOAD
OF
STANDARD
BRED HORSES**

To be sold at New Holland Sales
Stables, New Holland, PA
MONDAY, JUNE 30

- 5 yr. old trotter by Speedy Scott
- Big 5 yr. old trotter by Noble Jester
- Trotting mare by Angyl Hanover
- Other Big Carriage Horses

REUBEN G. STOLTZFUS
RD 2 Myerstown, PA



**PENN PACKING
BUYING STATION**

At Green Dragon Livestock Sale
1 mile north of Ephrata, Pa.

**WILL BE CLOSED FOR
PLANT VACATION
June 30 to July 4th**

Have a Happy Fourth of July!