

Tax break deadline is July 1

LANCASTER — "Farmland and forest land owners are reminded that they have until July 1, 1980 to indicate to their county tax assessor that they would like to apply for 'use value' assessment of their land for the 1981 tax year," says Peter H. B. Norton, community affairs specialist, Penn State.

Farmland and forest land owners having 10 or more contiguous acres apply and participate voluntarily. The landowner must take the initiative to indicate an interest in the program.

However, he is not required to make the specific decision whether or not to participate until he is provided information showing the taxes he would normally pay and the taxes he would pay under a "use value" assessment. This information is provided in his discussion with the county tax assessment office personnel.

The program is rather new in Pennsylvania. It has been available for the five tax years of 1976-1980. The date the greatest participation has been those counties that

have had a recent update of their tax assessments. Generally, in those counties, the "use value" assessment is lower than the normal assessment.

"This results in a lower tax bill for the landowner," adds Norton.

There are three categories that the landowner may choose from for consideration. They are

Agricultural Use, Agricultural Reserve, and Forest Reserve. His choice is based on his land use and his discussion with the county tax assessor.

The preferential assessment — use value — under the program generally result in less taxes for the landowners than he would otherwise pay. The purpose of the reduced tax incentive is to aid in

keeping land in agriculture use, forest use, and open space use in the Commonwealth.

The use value assessment program provided for in the Pennsylvania Farmland and Forest Land Assessment Act - Act 319 of 1974, commonly referred to as the "Clean and Green Act," is a voluntary program.

Grangers ask mushroom quota

HARRISBURG — Charles E. Wismer, Jr., Master of the Pennsylvania State Grange, called for the International Trade Commission to institute an annual mushroom import quota of 48 million pounds and to maintain the present 3.2 percent per pound tariff tax to protect the domestic mushroom grower, in Harrisburg today.

"Imported mushrooms are seriously eroding the domestic mushroom

market," Wismer commented.

"It is our understanding that there are no import quotas to control the intake of foreign-grown mushrooms."

He went on to say that this leaves the domestic mushroom grower "unprotected against loss of income and possible bankruptcy."

Mushroom imports have risen 19 percent over last year's levels, leaving the

domestic market "extremely depressed," he said.

"The most ironic part of this whole thing," Wismer said, "is that foreign growers were originally encouraged to enter the market with incentives offered by the U.S. Government."

"The damage potential of this action is great. Many of our members who grow mushrooms have complained bitterly that foreign mushrooms are driving them out of their own market."

xxx

Farm accident fatalities declined 20 percent from 1970 to 1976, the U.S. Department of Agriculture says.

MONTHLY DAIRY AUCTION

AT RUDNICK'S DAIRY SALES BARN
RTE 213 - GALENA, MD

TUESDAY, JULY 1, 1980
At 7:00 P.M.

Monthly Dairy Sale held the first Tuesday of each month featuring fresh and springing cows, bred and close springing first calf heifers

Joe Rudnick, Auctioneer

HARRY RUDNICK & SONS, INC.
Sales Managers & Auctioneers
Galena, MD. Phone: 648-5100

PUBLIC SALE

OF REAL ESTATE

(Building Lot Zoned Industrial)

MONDAY EVE., JULY 21


At 7:00 P.M.

Located along old Phila. Pike, Rt. 340, east of Lancaster, East Lampeter Twp., Lanc. Co., Pa.

1.51 acres of land zoned industrial w/no buildings or improvement. Public sewer running along front of lot. Lot is situated just west of B R W Fuel Oil Co. 75' frontage by 526' depth and 181' across rear.



Sale by
ROBERT L. REESE

Harry B. Yost Attorney
Howard Shaub Auctioneer 464-3541
and Roy C. Probst



**Ask the
VMD**

Leon Riegel

Tim Trayer Edgar Sheaffer

If you have a question you would like answered by the team from Valley Animal Hospital, send it to Ask the VMD, Box 366, Lititz, Pa. 17543. Questions will be kept anonymous on request.

Rat-catcher care?

A reader asks:

What is a simple health care program for farm cats?

Dr. Riegel comments:

Farm cats - a beneficial asset or a costly nuisance?

This depends greatly on how they are kept, what they are fed, and what measures are taken to prevent some of the major diseases plaguing cats which may be passed on to other farm animals.

In addition to the above, some measure of cat planning should be adopted.

Some of the definite problems with cats arise when uncontrolled breeding takes place. Soon the place is over run with cats. And, as the cat population increases, the chances for disease increases as well.

The diseases encountered are feline distemper, feline pneumonitis, feline rhinotrachitis, and calicivirus.

Besides these diseases that may be devastating to the feline population, there are other diseases which theoretically can be passed on to other farm animals such as leptospirosis, toxoplasmosis, and tuberculosis. This may occur when cats are using feed carts and feed troughs for litter boxes.

The benefits cats bring to the farm come from their threat to the rodent population.

Beginning with any health care program, you should decide how many cats are a suitable number for your farm. When this is decided,

this number should be maintained.

Neutering all the cats would be the most effective way of accomplishing this, but could be quite expensive. However, neutering just male cats is sufficient in situations where there is no problem with strays.

As for a health program for the cats, a basic vaccination of feline distemper vaccine, and rabies vaccine is a must. Complete

protection with vaccinations for feline rhinotrachitis and calicivirus (two viruses that cause upper respiratory infection in cats and certain wild animals, such as skunks and raccoons), could be accomplished with a little more expense.

If cats would get sick, there are antibiotics used routinely on most farms that could be used to effect a cure.

Consult your veterinarian.

ANTIQUE SALE FARMERSVILLE AUCTION FRIDAY, JULY 4

9:00 A.M.

In Farmersville, 3 mi. East of Brownstown, Lancaster County, PA.

8 ft softwood corner cupboard (1 piece); 5 pc Victorian living room suite, Victorian sofa; 3 pc oak bedroom suite; hanging light w/glass prisms (no insert), fainting couches, butter churn on stand; books; old yard goods remnants, grained blanket chest; camel back trunk, square oak extension table w/boards; dog wagon, old clothing, depression bed, oak rockers; red, white & blue coverlet w/Eagles; Empire sideboard; quilts; oak sideboard; kerosene lights, cast iron bull dog, cigar cutter; wall clock; baskets; photo album, dated jars, spittoons; wicker fernery, tin ware, crocks, 1800's Almanacs, gingerbread clock (as is), rag carpet, set of 6 cane seat chairs; 2 rope beds, depression china closet; cane seat & back wheelchair w/wooden wheels; set of 6 Bentwood chairs, pictures, cheese boxes, Atwater Kent radio w/horn, wood box, glassware, dishes; etc etc

DOLLS Bisque heads kid body 18" A M, 12" A M, 10" 341 Dream Baby (new body), 8 small all Bisque dolls

COMPOSITION 15" By-Lo Baby, 24" Flirty Eye Baby, 24" Toddler, 14" Indian boy doll, 20" Effanbee Sugar Baby, 12" Aranbee Baby, 18" Sonja Heme; 14" Campbell Kid, 17" Minerva Tin Head glass eyes and wig, and others

This is a very brief list

WE SELL ON COMMISSION

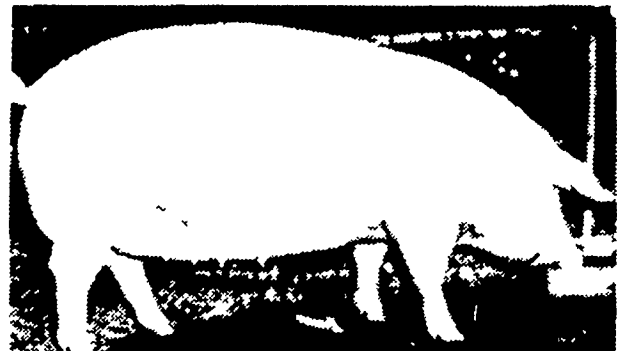
Call
JOHN J. RUTT
717-354-5095

BRED GILT SALE

SATURDAY,
JULY 12, 1980

1:30 P.M.

Located 8 miles north of Myerstown on Rt. 501 & 1 mile South of U.S. 22 on Rt. 501 at Bethel, Pa. Turn West at Bethel School to second farm on left.



40 head, 3 way cross bred Gilts. Yorkshire, Hampshire and Duroc cross. These are some of the finest crossbreds in the East. They are sired by Yorkshire boars and are bred to Purebred Hampshire boars. 15 2nd & 3rd litter 3 way cross sows bred to Purebred Yorkshire. 1 Purebred Landrace bred to Purebred Yorkshire coming in with 3rd litter. 1 Purebred Hampshire boar. If you need any bred stock, don't miss this sale. No outside hogs will be sold at this sale. All stock was blood tested for Brucellosis and Pseudorabies. Also vaccinated for Erysipelas, wormed and treated for lice.

Sale Conditions By,
HENRY H. MARTIN
717-933-4279

Auctioneer Alvin Horning
Free Sandwiches & Drinks - Not Responsible For Accidents