

York Co. DHIA

(Continued from Page C29)

Owner	Breed	No Cows	% Days in Milk	Lbs Milk	% Fat	Lbs Fat	
Dale L Barshinger		3	10-11	290	13,882	4.2	583
12		3	6-11	270	12,712	3.9	501
61		3	3-9	305	15,945	3.5	560
Albert Neufeld		3	7-8	305	16,240	3.7	605
Flathrn		3	5-8	305	12,506	4.6	573
Robt Baumgardner, Jr		3	8-1	305	21,350	4.4	945
Tara		3	6-5	305	24,074	4.1	991
42		3	5-10	305	17,413	4.2	725
David Stewart		3	3-7	305	20,008	4.2	840
Corrine		3	3-6	305	16,986	3.8	651
Bev		3	2-9	305	15,666	3.6	565
Bonnie		3	4-3	305	13,202	5.3	705
Gwen		3	4-3	305	12,480	4.1	513
Lupe		3	3-6	305	11,991	4.9	589
Mazie85		3	4-3	305	18,934	3.8	726
Rich & Steven Staner		3	3-7	276	14,389	3.8	544
Rosalie		3	3-5	305	15,209	4.2	643
P Haze		3	3-3	305	19,484	3.6	710
Susanna		3	0-0	305	15,660	3.7	573
Jay L Hoover		3	6-10	305	20,159	3.0	603
40		3	5-8	305	19,378	2.8	534
45		3	3-1	305	17,847	3.5	619
1		3	7-2	305	19,056	3.1	597
Jody		3	7-2	305	17,244	3.3	564
Pam		3					
Mc Ral Dairy Farm		3					
321		3					
356		3					
439		3					
William Ruppert		3					
Heddy		3					
Minnie		3					

Owner	Breed	No Cows	% Days in Milk	Lbs Milk	% Fat	Lbs Fat
Avalong Farms	B3	290	88.2	61.0	3.8	2.31
Smysers Richlawn	B3	69.7	88.6	59.5	3.7	2.23
Thomas A Boyer	B3	36.5	94.3	59.0	3.6	2.11
Sinking Spring Fm	B3	63.5	87.9	50.9	4.0	2.02
Beshore Farms	B3	45.1	84.1	58.2	3.5	2.02
Lynn Wolf	B3	47.7	90.4	56.9	3.6	2.02
H Fetrow & Sons	B3	76.3	87.3	48.9	3.9	1.91
Avalong Farms	B3	43.6	85.0	38.2	5.0	1.91
Phillip Laughman	B3	26.0	97.4	51.1	3.7	1.90
Paul R King	B3	52.0	87.1	50.9	3.7	1.89
Melvin R Lehr	B3	43.4	91.3	53.5	3.5	1.89
Wayne E Myers	B3	34.0	84.1	50.8	3.7	1.88
Kenneth Rexroth	B3	95.0	92.6	48.6	3.8	1.86
Brenner Farms	B3	25.0	100.0	48.9	3.7	1.83
Guy Leader & Sons	B3	84.3	85.8	37.0	4.9	1.83
R & M Stewart	B3	47.2	90.8	48.0	3.8	1.83
Wayne B Mummert	B3	71.5	81.5	47.3	3.9	1.83
Fred Sprenkle	B3	35.3	85.7	48.0	3.8	1.82
Stump Acres	B3	92.8	92.0	50.5	3.6	1.82
Rodman Thompson	B3	55.0	90.3	50.4	3.6	1.81
William Ruppert	B3	58.7	88.3	48.8	3.6	1.78
Wayne L Sweitzer	B3	60.1	93.9	49.6	3.5	1.75
Adrian Rinehart	B3	88.8	94.5	50.0	3.5	1.74
Kevin Holtzinger	B3	140.8	89.5	47.1	3.7	1.74

Geo Knight	B3	118.1	89.0	47.9	3.6	1.73
Honeycrest Fm	B2	94.4	86.4	38.6	4.5	1.73
Stump Acres	B3	89.3	88.9	46.7	3.7	1.72
Hidden Springs Fm	B3	80.7	90.8	44.4	3.9	1.71
R & F Feeser	B3	103.4	91.2	46.2	3.7	1.69
B Robert Charles	B3	45.8	82.0	45.3	3.7	1.69
Richard E Stough	B3	36.9	84.5	44.4	3.8	1.68
Claude M Cooper	B3	36.0	90.7	45.9	3.7	1.68
Elvin G Molison	B3	99.9	86.3	45.5	3.7	1.67
Earl Fuhrman	B3	68.0	80.6	40.4	4.1	1.66
Leland Stanford	B3	35.6	96.2	42.9	3.8	1.65
T Edwin Johnson	B3	51.8	83.7	43.2	3.8	1.64
William H Fantom	B3	67.0	92.4	43.3	3.8	1.63
Fawn Valley Farm	B3	65.6	89.8	41.2	3.9	1.62
Hidden Springs Fm	B3	79.1	88.0	42.1	3.8	1.62
T & M Walker	G3	40.8	86.5	44.3	3.7	1.62
William H Fantom	B3	66.4	90.1	43.0	3.7	1.60
Robert W Mays	B3	63.9	95.3	47.0	3.4	1.60
C Robert Kilgore	B3	41.1	90.2	46.3	3.4	1.59
Rick L Cook	B3	80.1	92.8	40.6	3.9	1.59
David Stewart	B3	102.8	92.5	46.3	3.4	1.59
Ritter Bros	B3	78.3	86.0	31.5	5.0	1.57
Ritter Bros	B3	76.9	84.9	30.7	5.1	1.57
McRai Dairy Farm	B3	120.4	91.4	44.1	3.6	1.57
Gum Tree Farm	B3	36.0	91.9	40.5	3.8	1.55
John H Doll Jr	B3	32.9	88.6	47.2	3.3	1.54
Donald Lanus	B2	85.0	90.2	30.1	5.1	1.53
Albert Dehoff	B3	123.0	92.9	40.1	3.8	1.53
Harold Brown	B3	62.9	98.6	44.1	3.4	1.52
Dale Barshinger	B3	39.9	90.0	45.4	3.3	1.52
Leroy Bupp	B3	57.3	83.6	40.9	3.7	1.51
Vincent C Webb	B3	67.3	88.1	42.1	3.6	1.50
Eugene M Kilgore	B8	48.6	85.9	39.4	3.8	1.49
Ramsey Cooper Jr	B8	56.3	93.0	41.8	3.6	1.49
Eugene B Taylor	B3	49.0	86.8	40.6	3.7	1.49
J & M Hushon	B3	94.3	88.3	37.5	3.9	1.48
Dennis J Myers	B3	49.0	93.5	40.5	3.7	1.48
Fantom & Gordon	B3	53.7	91.9	40.5	3.6	1.47
John C Krone	B8	37.7	93.9	42.3	3.5	1.47
John D Adams	B3	66.8	87.7	38.8	3.8	1.46
Jay L Hoover	B3	49.5	88.4	38.6	3.8	1.46
Eisenhart Bros	G3	57.2	88.5	38.1	3.8	1.46
Ralph L Innerst	G3	47.5	98.0	36.8	3.9	1.43
R Baumgardner	B3	56.0	89.9	38.6	3.7	1.43
D & D Doll	B3	71.5	86.7	39.5	3.6	1.42
Donald Wilson	B3	40.7	90.9	38.7	3.7	1.42
D L McWilliams	B3	59.9	90.5	40.1	3.5	1.40
Mervin W Hertzler	B3	69.8	90.2	29.9	4.7	1.40
Walkers Farm	B3	78.5	87.1	38.2	3.7	1.40
Eddy L Calhoun	B3	38.5	78.9	37.5	3.7	1.39
Perrydell Farms	G3	177.0	86.8	43.5	3.2	1.39
William S Buser	B3	87.6	87.4	44.0	3.2	1.39
Jay L Hoover	B3	44.0	87.2	36.6	3.7	1.37
Fred Kimmel	B3	24.0	94.4	35.7	3.8	1.36
R & S Staner	B2	76.2	89.5	28.9	4.7	1.36
E & Wm Kilgore	B3	66.1	84.7	37.4	3.6	1.35
P R Stambaugh	B3	51.4	84.3	35.9	3.8	1.35
Benjamin Beiler	G3	36.0	87.8	48.3	3.7	1.81
Charles A Emig	G3	49.9	92.1	41.9	4.0	1.67
C L Petersheim	B3	36.0	85.9	43.6	3.7	1.61
David M Emig	G3	49.0	86.3	38.9	4.0	1.55
Doll Zirkle	B3	32.8	85.0	41.5	3.7	1.52
Donald Eyster	B3	29.0	90.7	39.0	3.7	1.44
C L Petersheim	B3	38.9	83.4	38.0	3.7	1.41
Orn Cos Pndrma Dy	B3	62.0	84.3	34.7	4.1	1.41

Bull testing nominations open

STATE COLLEGE — more for a bull that has a good, honest performance rating," Hallowell said "If we look at the bulls that sold this past year, bulls with a Final Index Ratio above 100, averaged \$1,540 each."


The testing program is designed to provide information towards improvement of the breed. Both large and small producers can participate and have their bulls compared under similar conditions.

The deadline for nominations is AUGUST 31. For a copy of the Bull testing Rules and Regulations or applications, contact the Pennsylvania Department of Agriculture, Meat Annual Evaluation Center, 651 Fox Hollow Road, State College, PA 16801, phone, (814) 238-2527.

The Bull Testing Program is sponsored by the Pennsylvania Department of Agriculture in cooperation with Penn State and the Pennsylvania Cattlemen's Association.

IT'S MAGIC
How quickly
You Get Results
From Our
Classifieds!

PHONE
717-394-3047
or 717-626-1164



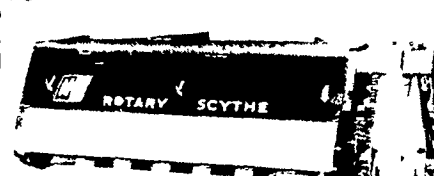
NOW! CASH REBATES



the NON-STOP Mower-Conditioner that does the job in ONE trip!



Haymaking is a lot easier with an M-C Rotary Scythe. Regardless of the type of crop, an M-C will lay down a perfectly conditioned swath or windrow hay that is properly conditioned and uniform in moisture. Hay that won't spoil or mold in stacks or bales. Should your hay get wet by rain, your M-C will pick it up and fluff it gently and have it ready to harvest in a short time. Field tests prove no haymaker can get a downed crop better. And the M-C Rotary Scythe has fewer moving parts for low cost, less maintenance and longer life.



For STACKS or BALES

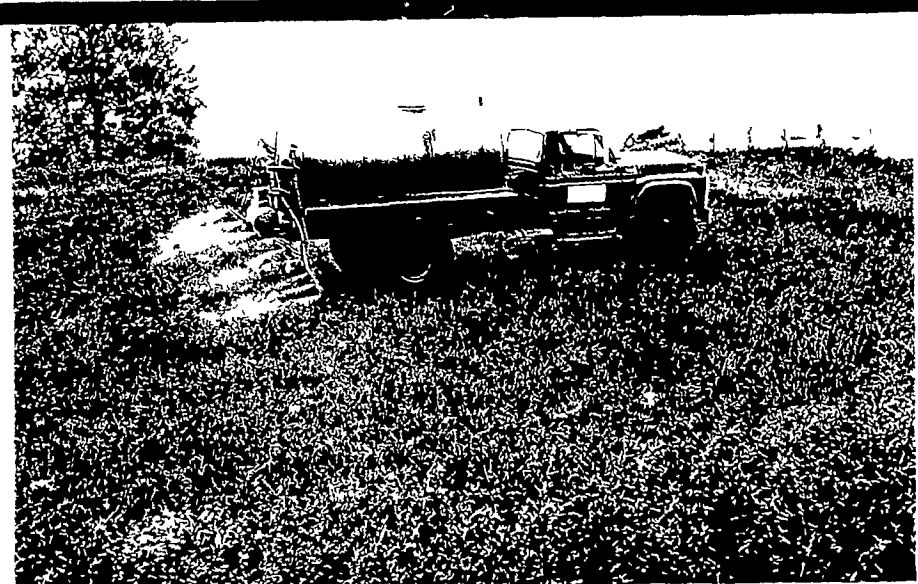
M-C is offering cash rebates on the Rotary Scythe, Chopper and Shredder when you buy during May, June 1980. "The sooner you buy, the bigger your cash rebate."

For more information, contact:

- | | | |
|--|--|--|
| ABRACZINSKAS FARM EQUIPMENT INC
RD 1 Rt 42
Catawissa PA 17820
717 356-2323 | MILLER REPAIR
RD 1 554 Gibbons Rd
Bird In Hand PA 17505
717-656 9013 | ZIMMERMAN FARM SERVICE
Bethel, PA 19507
717 933 4114 |
| AUMILLER'S SALES & SERVICE
Milroy PA 17063
717 667 2115 | CLARENCE R SEAMAN, INC
Dauberville PA 19517
215 926 5504/2285 | TED BURNETT TIRES
Rd 1
Westtown NY 10998
914 726 3378 |
| GRUMELLI'S FARM SERVICE
Rd #2
Quarryville PA 17566
717 786 7318 | WALTEMYER FARM REPAIR SERVICE
RD 3 Box 46
Red Lion PA 17356
717-244 4168 | KNOTT & GEISBERT INC
Rt 2 Urbana
Frederick MD 21701
301 662 3800 |
| IG SALES
P O Box 200
Silverdale PA 18962
215 257 5135 | | E T CLINE & SONS INC
E First & Kuhn Ave
Hagerstown MD 21740
Robert W Cline Mgr
301 739 2223 |

Territory Manager

DAVID D DEITRICH 703 667 3787 703 667-0363



ARCADIAN® liquid gives a profitable boost to alfalfa after every cutting.

Give alfalfa a liquid boost after the first cutting. That's when topdressing N-P-K, and micronutrients in an Arcadian® liquid fertilizer made with POLY-N® pays big dividends in high yielding, high quality alfalfa. You can even add pesticides if you need to.

When it's done right, a topdressing after every cutting will increase the yields. It will raise the protein content. Help the crop compete better against grasses. And improve the vigor for a long stand life.

Arcadian liquid makes it easy. Made the SLF® way. Arcadian liquid gives you uniform distribution of fertilizer ingredients from start to finish. It's truly the efficient way to turn alfalfa into green gold.



MARTIN'S AG SERVICE

c/o John Z Martin
RD #1, Box 716, New Holland, Pa 17557
Ph 717 354 5848

ZIMMERMANS LIQ. SERVICE

Rehrersburg, Pa
Ph 717 933-4360