



Donald Zaleski, pulling the front end on his Cockshutt powered with a Chevy, is among the area's regular pullers.

Tractor pullers to drive for Easter Seals

HONESDALE — The Honesdale fairgrounds will be the spot where the Tri County Tractor Pullers Association will host an Easter Seal Telethon Benefit Tractor Pull on Sunday, June 29th at 12:30 p.m.

One of the contestants will be John Whetmore the 1979 9000 pounds Farm Stock Champion and President of the Tri County Assoc., driving his Deutz 8006.

Les Houck of the Pennsylvania Tractor Pullers Association notes that while the popularity of the highly sophisticated Super Stock and Modified tractors have been growing at a tremendous rate, the stock farm tractors are the backbone of tractor pulling.

Also included in the classes of the Benefit Pull will be the four wheel drives, which are not only exciting but a lot of fun.

Refreshments will be served on the grounds.

For further information

please contact Kenny Wheeler of the Tri County Tractor Pullers Assoc. or the Northeastern Pennsylvania Society for Crippled Children and Adults, Inc.

Free solar energy booklet available

HARRISBURG — Many Pennsylvanians are discovering solar energy as a means to save both money and natural resources.

Rep. Noah Wenger says the Governor's Energy Council has two booklets that can help citizens improve or build their own solar energy system.

The Solar Primer explains in layman's terms how solar energy works. The booklet also outlines the savings that can be obtained by employing solar instead of conventional fuel sources.

"The installation of a solar hot water heater presently costs approximately \$2000 for a new home and \$2500 for an existing home," Wenger

explained. "The yearly savings, depends on water use and type of fuel, will average \$125. Greater savings can be expected as the cost of conventional fuel increases.

The Solar Directory lists solar equipment manufacturers in the United States and contains a roster of solar equipment distributors and installers in Pennsylvania.

Those who would like free copies of the booklets should write to the Governor's Energy Council, Alternate Energy Division, 1625 North Front Street, Harrisburg, PA 17102. Or call the toll-free Energy Conservation Hotline at 800-882-8400.

LET US DEVELOP A DAIRY FEEDING PROGRAM JUST FOR YOU!



WE HAVE EVERYTHING YOU NEED FOR A DAIRY HEALTH PROGRAM!

★ PREVENTION & TREATMENT PRODUCTS ★

★ LET US SHOW YOU THE ADVANTAGE OF PENNFIELD'S DRY COW FEED

A complete line of animal health products and supplies

Rohrer's Garden & Flower Seeds
Ortho Lawn & Garden Products


pennfield feeds

★ YOUR FULL SERVICE DEALER

ELMER M. SHREINER

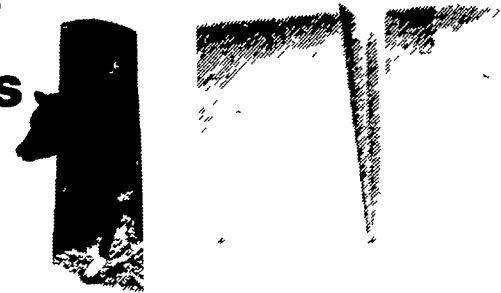
T / A GOODS FEED MILL

R.D. 2 NEW PROVIDENCE, PA.

PHONE: (717) 786-2500

How many calves did you lose last year?

Fiberdome
CALFhutches
start them
out right



Raising calves is a tricky business. That's why modern calf raisers are going to individual hutches to help save more calves by cutting down on pneumonia, scours and hoof problems. Properly made hutches help eliminate the dampness, crowding and poor ventilation that plague many calf barns.

You can be assured of this kind of healthier environment with Fiberdome CALFhutches. Their

unique one-piece construction of heavy gauge fiber glass makes them weatherproof, so they will last indefinitely with normal care. No joints for moisture and bacteria to creep through. A white gel-coat finish keeps them cool in summer.

When not in use, stakes can be removed and strong U-bolts on top let you conveniently pick units up to clean or stack for compact storage.

For more complete information send for free booklet

Fiberdome INC
...made to last

PO Box 11
Lake Mills Wisconsin 53551

I want to know more details on how I can raise healthier calves with the Fiberdome CALFhutch™

Name _____

Address _____

City _____

State _____

Phone _____

Zip _____

Pole Shed & Barn Material Center

PRESSURE TREATED LUMBER

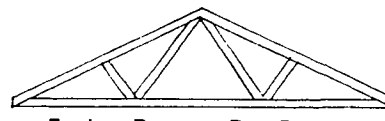
- SIZES:
- 2x4
 - 2x6
 - 2x8
 - 2x10
 - 4x4
 - 4x6
 - 6x6
 - 2x6 T&G

Excellent For:

- ★ FARM BUILDING
- ★ PATIO
- ★ FENCE
- ★ POLE SHEDS
- ★ SUNDECK
- ★ OTHERS

2x4 - 8 Economy Kiln Dry Spruce
99¢

- 1x8 Barn Siding 6' to 16'
- 2x8 T&G Yellow Pine Barn Flooring



For Low Prices on Roof Trusses
Check with Musselman

Large Selection of LAWRENCE HARDWARE

- Door Hangers
- Brackets
- Track
- Bumpers
- Stay Rollers
- Latches

1 x 6 Rough Cypress Boards
for Fence & Gates

FREE DELIVERY



Put a roof over your roof.

Cover your old shingled or built up roof with

Onduline

Corrugated asphalt panels
warranted 25 years
against leaks.

- USE THE ASPHALT ROOFING/SIDING THAT
- insulates like cork
 - installs easily on foot centers
 - will not rust
 - will not corrode from fertilizers or chemicals
 - offers a choice of built in colors.
 - requires no special tools
 - is lightweight and flexible

Stocking Dealer
Silver, Red, Green & Brown



ONLY
\$6.50
Driveway Sealer

MUSSELMAN LUMBER INC.

200 BRIMMER AVENUE, NEW HOLLAND, PA

Phone 717-354-4321

Hours: Daily 7AM to 5 PM, Saturday 7 AM to 12 PM

