

Livestock market and auction news

Four States Livestock

Hagerstown, Md.
Wednesday, June 11

Report supplied by auction
SLAUGHTER: Fed Steers very active, \$3.00 higher. Choice 61.00-63.50; Good 56.00-60.00; Medium 55.00 Down. Heifers Choice 57.00-59.75; Good 53.00-56.00; Medium 52.00 Down. Cows Good run, \$2.00 to \$3.00 higher. High Yield 52.00-54.00; Average 47.00-51.00; Big Middle 42.00-46.00; Shelly 44.00 Down. Fat Bulls \$3.00 higher. Good 59.00-62.50; Medium 54.00-58.00 Veal Calves \$3.00-\$5.00 higher. Choice 92.00-98.00; Good 85.00-91.00; Medium 75.00-84.00; Farm Hfrs to 145.00; Farm Bulls to 117.00; Light & Weak 67.00 Down. Lambs \$2.00 higher Choice 66.00-67.75; Good 61.00-65.00; Medium 57.00-60.00; Standard Good 84.00-87.00; Good 79.00-83.00; Medium 71.00-78.00; Culls

70.00 Down. Steers 600-850 lbs. Choice 70.00-74.00; Good 64.00-69.00; Medium 63.00 Down. Heifers (All Weights) Choice 61.00-64.50; Good 54.00-60.00; Medium 53.00 Down. Bulls Choice 70.00-73.50; Good 62.00-69.00; Medium 61.00 Down. Dairy Cows to 850.00. Springing Heifers to 1170.00 Pigs, Hd. \$2.00 lower. 20-30 lbs. 9.00-14.00; 40-60 lbs. 15.00-18.50. Shoats by Lb. to 27.50. Slaughter Hogs Good run, \$2.00 to \$3.00 higher. 210-230 lbs 33.75-34.60; 240-260 lbs. 33.10-34.85; 190-205 lbs. 31.00-33.25. Sows 300-600 lbs. 26.00-29.50

Sechrist Auction

Monday, June 16

Report supplied by auction
CATTLE 72. Steers Good Choice 60.00-63.50; Good 58.00-60.50; Standard Good 56.00-58.50; Holsteins Good 53.50-55.50; Standard to Good 52.00-53.35 Heifers Good to

Choice 58.00-60.85; Good 55.00-57.85; Standard Good 50.00-55.00; Holsteins Good 52.50-55.10; Standard Good 50.00-52.35. Feeder Steers & Heifers Good and Choice 70.00-80.00; Standard Good 65.00-70.00. Bulls Good and Choice Commercial 60.00-64.75; Standard to Good 55.00-58.50; Utility to Standard 50.00-54.50 Cows High Yearling Commercial 48.50-51.85; Cutters 46.00-48.50; Canners Low Cutters 44.00-46.85; Shells 40.00-44.00.

CALVES 81. Calves Choice and Prime 95.00-109.00; Good and Choice 88.00-95.00; Standard and Good 70.00-85.00; Bulls 100-120 lbs. 95.00-110.00; Hfrs. 80-140 lbs. 85.00-195.00; Culls 50.00-70.00.

FEEDER PIGS 89. U.S. No. 1 and 2, 35-50 lbs. 25.00-29.00 per head; U.S. No. 1 and 3, 30-45 lbs. 18.00-23.50 per head.; U.S. No. 1 and 3, 25-70 lbs. 14.00-28.00 per head. Sows 250-375 lbs. 27.85-30.50; 400-500 lbs 25.00-27.75. Boars 300-500 lbs. 22.00-26.00.

SHEEP 32. Lambs Good to Choice 60.00-75.00, Medium and Good 50.00-60.00. Ewes 15.00-25.00.

Private Treaty Fat Hogs, Select No. 1 and 2, 190-215 lbs. 38.00-39.00.

Private Treaty Fat Hogs, No. 1 and 2, 190-220 lbs. 37.00-37.50.

Private Treaty Fat Hogs, No. 1 and 3, 240-260 lbs. 36.50-36.75.

Martinsburg Auction

Martinsburg, Pa.
Monday, June 16

Report supplied by auction
CATTLE 209. Compared with last Monday's market; Choice slaughter steers 62.00-65.00, Good 58.00-62.50, Standard 54.00-59.00, Utility 48.00-56.00. Good slaughter heifers 55.00-64.00, Standard 53.00-60.00, Utility 48.00-56.50. Utility & Commercial slaughter cows 47.50-56.50, Cutters 46.00-52.00, Canner & Low Cutter 42.00-47.50, Shells down to 40.00. Good slaughter bullocks 57.00-63.00, Standard 55.50-60.00, Utility 48.50-56.00. Yield Grade #1 1000-2000 lbs. slaughter bulls 59.00-64.00; yield grade #2 900-1600 lbs. 56.00-60.00.
CALVES 243. Choice

vealers 90.00-115.00, Good 85.00-95.00, Standard & Good 90-110 lbs. 72.00-85.00, 70-90 lbs. 63.00-78.00, Utility 55-100 lbs. 55.00-68.00. Farm calves, holstein bulls 90-120 lbs. 85.00-120.00; few holstein heifers 85-130 lbs 140.00-175.00.

HOGS 432. US No. 1-2 200-240 lbs. barrows & gilts 38.50-40.10, No. 1-3 195-230 lbs. 31.50-39.50, No. 2-3 260-270 lbs. 36.50-38.50, No. 1-3 130-185 lbs. 30.00-34.00. US No. 1-3 300-575 lbs. sows 26.50-32.00, No. 2-3 300-650 lbs. 27.00-31.00. Boars 23.50-29.00.

FEEDER PIGS 51. US No. 1-3 20-35 lbs. feeder pigs 12.00-28.00 per head, No. 1-3 35-50 lbs. 15.00-33.00 per head.

SHEEP 0. No sales on offer.

Shenandoah Valley Livestock

Saturday, June 14

Report supplied by auction
STOCKER, FEEDER, AND SLAUGHTER CATTLE: Good Light Steer Calves 72.00-78.00; Medium 68.00-72.00; Plain 63.00 and down; Good Heavy Steers 65.00-70.00; Medium 60.00-65.00; Plain 55.00 and down; Holstein Steers 69.25 and down; Good Light Heifer Calves 65.00-69.50; Medium 60.00-65.00; Plain 55.00 and down; Good Heavy Heifers 57.00-61.00; Medium 52.00-57.00; Plain 47.00 and down; Slaughter Cows 45.00-50.00; Utilities 40.00-45.00; Milk & Stock Cows 85.00 and down; Slaughter Bulls 62.00 and down.

CALVES: Veal Calves 92.00 and down; Baby Calves 160.00 and down.

SHEEP & LAMBS: Choice Blue O 70.60; Good Red O 65.50; Slaughter Ewes 22.00 and down

HOGS: Top 36.50; Heavy 32.00; Sows 32.00 and down; Boars 20.25.

Valley Livestock

Valley Stockyards
Athens, Pa.

Monday, June 16

Report supplied by auction
Reported receipts of 322 calves, 86 cows, 13 heifers, 17 bulls, 8 steers, 185 hogs, 5 lambs, 4 sheep. Cattle

market reported higher, calf market reported steady.

Holstein Heifer Calves to 157.50; Veal Calves 85.00-100.00; Bobs, 90-110 lbs. 75.00-95.00; Bobs, 80 and down lbs. 50.00-65.00; Grassers & Feeders 45.00-68.00; Lambs 55.00-68.00; Sheep 21.25-29.50; Hogs, 200-250 lbs. 33.00-37.00; Sows 26.00-31.00; Boars 20.00-23.00; Pigs 10.00-30.50; Heifers 51.25-55.50; Steers 52.00-57.50; Steers, feeder 50.00-65.00; Bulls 52.00-60.00; Cows, utility 50.00-54.25; Cows, fat 45.00-47.00; Cows, medium 44.50-47.00; Cows, poor or small 43.00-44.00; Horses to 550.00; Ponies to 42.50; Goats 11.00-40.00.

Hunter's Auction

Monday, June 16
Rising Sun, Md.

Report supplied by auction
FEEDER HEIFERS: Good to Choice 55.00-57.50.

COWS: High Choice to Prime 50.50-51.75; Good to Standard 48.75-50.00; Utility 47.75-48.25; Cutters 43.75-46.00; Canners 41.50-45.50.

CALVES: Prime 220-240 lbs. 87.00-96.00; High to Choice 140-180 lbs. 82.00-91.00; Good to Choice 120-140 lbs. 86.00-90.00; Standard to Good 90-110 lbs 86.00-94.00; Utility 70-85 lbs. 72.00-86.00; Low Utility 65-75 lbs. 58.00-79.00.

FEEDER PIGS: 20-25 lbs. \$8 to \$14 by hd.; 25-35 lbs. \$14 to \$24 by hd.

SOWS: 25.00-33.00.
BOARS. 22.00-28.00.
GOATS. Nannies \$28 to \$77 by hd.; Kids \$18 to \$24 by hd.; Billies \$22 to \$38 by hd.

Danville Auction

Danville, Pa.
Monday, June 16

Report supplied by auction
STEERS: Good to Choice 61.00-64.25; Standard to Good 58.00-60.85.

BULLS: 56.50-58.75.
COWS. High Choice to Prime 49.00-50.85; Good to Standard 47.35-49.00; Utility 44.00-47.00.

CALVES: 81.00-115.00.
HOGS 495: 39.50-43.00.
SOWS 24.00-30.00.
BOARS: 23.00-26.50.
FEEDER PIGS 116: 8.00-16.00.

East Coast Carlot

Wednesday, June 18

Report supplied by USDA
Compared to Tuesday's close: prime special fed veal generally steady in narrow test. Good and Choice boning veal, northeastern supplies, steady to 2.00 higher than Monday's last test; in-shipped, no sales reported. Spring lamb 55 lbs. down compared to last week's bulk mostly 3.00 to 5.00 lower, 55-65 lbs. 2.00-3.00 lower, 65-75 lbs. old crop 1.00 to 2.00 lower.

VEAL CARCASS HIDE ON 50 Head

Prime (Special Fed): 180-240 lbs. few 160.00, generally steady.

BONING TYPE Good and Choice

Northeastern Suppliers. 65-75 lbs. 118.00-122.00, steady to 2.00 higher than Monday; 55-64 lbs. 116.00-120.00; 45-54 lbs. 114.00-118.00; 35-44 lbs. 112.00-116.00; 34 lbs. down 110.00-113.00.

Inshipped: No sales reported.

SPRING LAMB CARCASS Choice & Prime 3-4

1 Load
55-65 lbs. 134.00, 2.00-3.00 lower; 65-75 lbs. 134.00, 1.00-2.00 lower.

SPRING LAMB CARCASS Choice & Prime 3-4

4 Loads
55 lbs. down 133.00-135.00, 3.00-5.00 lower, mostly 134.00; 55-65 lbs. 134.00, 2.00-3.00 lower; 60 lbs. down 134.00.

BONELESS BEEF

1 Load
75 pct chem lean, fresh 100.00-101.00, part loads.

CURED AND PROCESSED MEATS

7 Loads
Boneless Hams: 13-17 lbs. 109.00 weak.
No. 1 Sliced Bacon: Vacuum Pack, 1 lb. pkg 79.00 steady.
Franks, 70 Beef, 30 Pork 1 Lb. Pack: 75.00 steady.

FRIDAY, JULY 11 ON THE FARM MONTHLY BRED GILT SALE

Sale to start promptly at 1:00
Every 4 weeks

Located 18 miles south of Lancaster, PA, 6 miles south of Quarryville, take Rt 272 to Little Britian, turn north, follow Little Britian Rd. to Jackson Rd. 2nd farm, OR Take Rt. 222 out of Quarryville to Cedar Hill Rd. to Little Britian Rd. to Jackson Rd. Watch for sale arrows

50 to 60 Head
more or less

2 & 3 Way Crossbred Gilts
York & Hampshire & Duroc

Due to farrow 3 days to 4 weeks after sale date Now everything vaccinated for both Lepto & Erysipelas, wormed and sprayed for lice

Local trucker available.
No hogs sold on commission

CHRIST A. BEILER
RD 2, Quarryville, PA
JOHN B. STOLTZFUS

Abe Diffenbach
Auctioneer

NEXT SALE DATE - AUGUST 8

Green Dragon Livestock Sales

1 mile North of Ephrata, PA

COWS COWS COWS BUYERS FROM 3 STATES

Regular consignments from Ray Kyper, Bob Kennedy, Dale Brewer and Ed Stover plus local consigners

Lots of good Northern Feeders and Stockers.

SALE EVERY FRIDAY

Bulls, Steers, Slaughter Cows,
Lambs and Veal Calves

11:00 A.M. - Beef Sale Stockers & Feeders
200 to 250 each week

12:30 P.M. - Dairy Cows

7:00 P.M. - Small Animal Sale

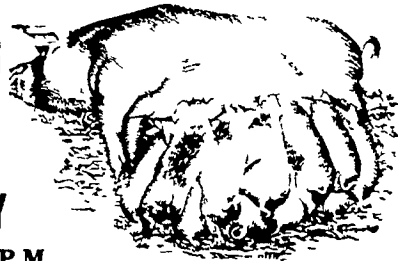
For Special Sales and Herd Dispersals on the farm or at our barn or other market information call: Office 717-733-2444.

WALTER H. RISSER, Proprietor

NEW HOLLAND SALES STABLES, Inc.

12 Miles East of Lancaster
on Route 23, New Holland, Penna.

WEEKLY
FEEDER PIG
SALE
EVERY
WEDNESDAY



Sale to Start at 1:30 P.M.

We Will Receive Your Pigs Anytime
From 7 A.M. Wed. Morning

State Graded Until 12 Noon.
All pigs inspected by State Approved Veterinarian.
State tags available at our office for you to tag pigs at home to save 25 cents tagging charge.
Tags delivered if you call 717-354-4341 our office in advance.

Calf Sale To Be Held
Every Thursday At 4:30 P.M.

NORMAN KOLB ABE DIFFENBACH
717-397-5538 717-393-4464

ATTENTION FARMERS!!

SPRAY MATERIALS

IM-PRUV-ALL

MEDINA SOIL ACTIVATOR

Check Our Prices Before You Buy.

MELVIN R. WEAVER

2213 Leabrook Road, Lancaster, PA 17601
Ph. 717-898-8354 or 569-6576