

Pork producers put Harvey on team

DES MOINES, Ia. — Responding to SOS calls from its members, the National Pork Producers Council has authorized the biggest, strongest, longest advertising campaign in its 13-year history. The Council's exciting new project will establish three "firsts" for the organization: The Council will use a "big name" spokesman for pork, Paul Harvey. It will buy its first nationwide radio network. The campaign will run every week for a full year.

State President Abe Fisher commented that "we've all known that the only sure way to climb out of our red ink situation is to put pork on more family tables more often. Paul Harvey not only reaches the biggest audience in network radio, but he is a fighter for what is right, and his listeners are unusually loyal. When this man puts his personal endorsement on pork, week after week, he'll sell pork."

NPPC officials point out that Harvey talks to more

than eleven million people each day; that ABC's 850 stations cover not only the nation's big-city areas, but most of the rural sectors and small towns as well; that Harvey will personally deliver pork commercials and his endorsement "live" throughout the year.

Here in Pennsylvania, consumers and producers will be able to hear Paul Harvey on 25 stations, including WHOL, Allentown; WRTA, Altoona; WBVP, Beaver Falls; WGPA.

Bethlehem; WKAD (FM), Canton; WCDL-FM, Carbondale; WVCH, Chester; WCPA, Clearfield; WCVI, Connellsville; WRIE, Erie; WSKE, Everett; WCMB, Harrisburg; WDNH, Honesdale; WWBR, Johnstown; WGSA/WIOV (FM), Lancaster; WLAN, Lancaster; WKVA, Lewistown; WMGW, Meadville; WKST, New Castle; WRCP, Philadelphia; WWSW, Pittsburgh; WEEU, Reading; WILK, Wilkes-Barre; WMPT, Williamsport; and WNOW, York.

NPPC's President Bill Buller notes that "a Harvey sponsorship opens up very rarely. We had been looking for a really big lever to start our hog-price cycle up hill. Harvey can do that for us. With the best known 'name' on the air, with the largest audience, and with a superb sales pitch, this man will boost pork consumption. Frankly, I think that his identity with pork, coupled with his persistent battle against waste and foolishness in government,

can also be helpful to us as we tussle with goofy regulations, unsupported dietary directions and such. If you are not already a Harvey fan, you will be when you hear him sending shoppers to the store for pork."

The pork campaign will start in early August, on a weekly basis, with the commercials rotating through Harvey's morning newscast, his mid-day show, and his early-evening commentary.

Supreme Court decision on irrigation 'OK' with Farm Bureau

WASHINGTON, D.C. — Tuesday, the president of the American Farm Bureau Federation called a unanimous U.S. Supreme Court water-use decision a significant victory in Farm Bureau's battle against acreage limitations on irrigation projects. The high court ruling reversed a 9th Circuit U.S. Court of Appeals decision of 1957 limiting ownership in the Imperial Valley of California to 160 acres that could be irrigated from a Bureau of Reclamation project. Robert B. Delano, AFBF president, said that while the Supreme Court's decision applied only to the Imperial Valley, it is unknown at this time if the decision will directly impact all of the some 11 million acres irrigated by Reclamation projects in the 17 Western states. The farm leader said acreage limitations on land

irrigated from federal projects has been at issue ever since Secretary of Interior Cecil Andrus, nearly three years ago, announced intentions to enforce the Reclamation Act of 1902. The Act limited ownership of Reclamation project land to 160 acres and required the owner to live on or near the land irrigated by the project. "The Reclamation Act of 1902 — even with subsequent amendments — is completely inconsistent with today's farming technology and production costs," Delano said. "Farm Bureau has specifically supported repeal of provisions of the Act and has contested proposed regulations that relate to acreage

limitations, residency requirements, leasing provisions, direct lineage

ownership restrictions and use of a lottery to dispose of excess land," Delano said,

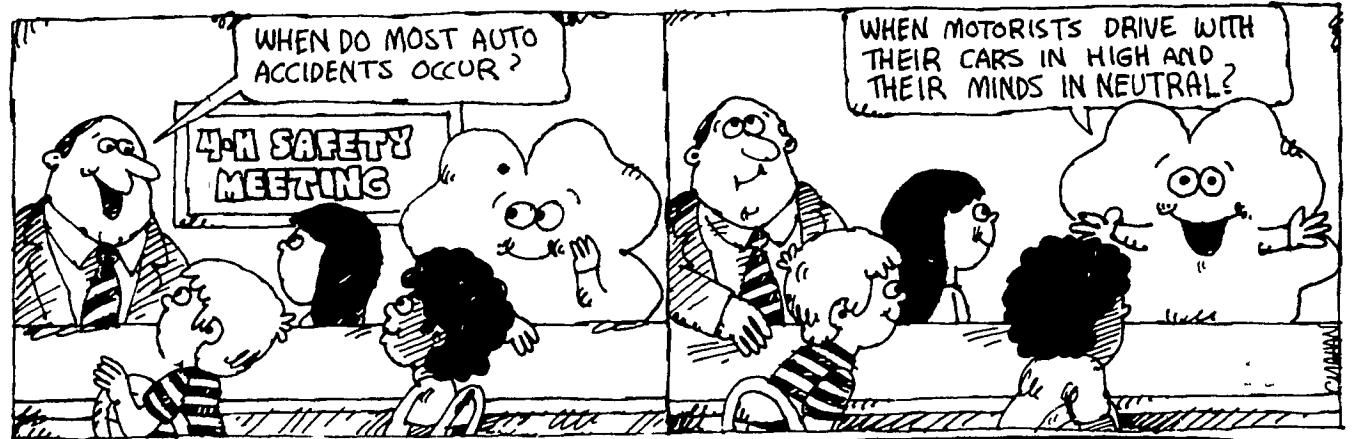
adding that the Supreme Court decision is an incentive for Farm Bureau to

intensify its efforts to modernize the Reclamation Act.

Lancaster County 4-H clubs

Cooperative Extension Service

CHRIS CLOVER



Lancaster 4-H Beef Club

LAMPETER — The Lancaster County 4-H Beef Club met recently at the Lampeter Fair Grounds for an ice cream party and game night. Members were encouraged to come out for the

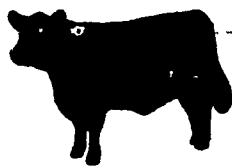
judging teams. Contestants were chosen for the queen contest for the next meeting.

The next meeting will be held on Wednesday July 2, at 8 p.m., at the Farm and Home Center.

Manheim Township 4-H Club

NEFFSVILLE — The Manheim Township 4-H Community Club held its third meeting recently. The club visited Green Leaf Enterprises at Neffsville. Pat Valentine, the

manager, gave a tour of the greenhouses. Then they left the greenhouses to have a meeting at Mervin Peifer's home. Reported by Chris Reist.



PUBLIC AUCTION MONDAY, JUNE 30

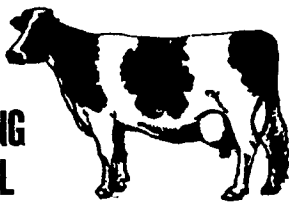
9:30 A.M. Antiques, Glassware, Furniture, 4 Frakturs, Toys;

Approx. 300 pcs. of Depression Glassware
Sole consists of: Furniture: Rd. oak table w/pedestal base, set of 8 oak chairs; lg. oak round china closet w/concave convex glass door & claw feet; oak round china closet w/ball & claw feet front & back; oak server w/bevel mirror - lg. claw feet; oak hall rack w/umbrella stand & seat; oak high sideboard w/bevel mirror, highly decorated; 3 marble top dressers; brass cannonball bed, oak dressers; oak washstand w/towel rack; pressed back spindle chairs; rockers; mission type oak settee w/matching rocker & straight chair; Columbia record player w/push button record selector; Curio cabinet bevel mirror; brass hindges; highly decor. sectional oak bookcase; Duncan phyfe wall table; walnut kitchen table; 4 pc. depression B.R. suite; hi chair; center tables; walnut Victorian mirror. Glassware: Epergnes, pink, green, blue depression, Cobalt blue, pressed, pattern, orange carnival bowl, vase, set of 8 glasses, Heisey pitcher, old candy containers; Iron donkey still bank w/saddle, occupied Japan pcs.; green kerosene lite; lg. glass basket, glass turkey; milk glass toilet bottles w/stoppers; German, Czechoslovakia, Bavarian; cranberry red ginger jar w/lid; lg. cranberry hat w/white fluted edge; Chalk Indian statue laying down, statues, paper mache rabbits, celuloid items, bisque, Clocks, musical instruments, toys, picture frames, all types; Keystone cop cookie jar, many more items too numerous to mention.

Sale Ordered by, MICHEALANGELO BRUNO

Schultz Auction Rt. 209 - Zerbe, Tremont, Pa. 35 miles from Harrisburg, Exit 33 - Tremont straight out on Rte. 209, North use Exit 34 - Hegins. Turn toward Newtown (about 3 miles). Francis (Pete) Schultz Auctioneers 71-717-695-3222 Terms: Cash or Certified Check - No out of state checks.

JONIBE SELECTED MILKING HERD DISPERSAL



THURSDAY, JUNE 26

24 cows due July Jan. 13 fresh with last 2-3 mo.

Sires represented: Jet Stream 7, Larry 7, Astro Galaxy 4, Countdown 4, Birch 4, Charmcross 3, Lucky 2, Job 2, Elevation, Transmitter 2, Vernon and others.

Service Sires: Tex 7, Creek 4, Ace 4, Gemini 3, Jet Stream 3, Astro Galaxy 3 and others.

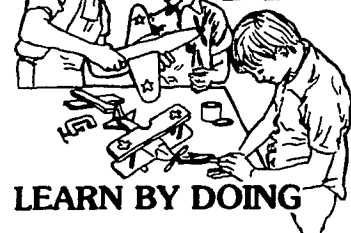
Some features: A fresh Charmcross with 3 years rec. of 16,529M 4.0 656F. Dam is EX91 Pincor with over 20,000M and 873F. Traces in direct maternal line to the dam of Wildmore Filbert ABC Conqueror. A real good Elevation with 4 yr. rec. 15,020M 4.2 628F proj. for close to 18,000M 772F. Dam by Gent Grdam by Direct. An outstanding Vernon with over 22,820M 4.6 1054F in 365d at 8 yr. Dam by Jessburge with over 20,000M 4.0 834F right at 100,000M, 2 dau. sell. A real good Transmitter due July with over 21,860M 3.6 786F at 4-11. 3 outstanding Birch dau. all testing over 4.0. They will please anyone. A real nice group of Jet Stream dau. all good uddered with a real good will to milk and many more good ones.

FOR LOCATION AND FURTHER INFORMATION ON THIS OUTSTANDING SALE SEE PAGE D-29 OF THIS ISSUE

Owner JOHN & IVA JEAN BUSIA

Managed by Gordon Wood

JOIN 4-H



LEARN BY DOING

PUBLIC SALE OF REAL ESTATE

(House, Lg. Building, Horse Barn) Zoned Commercial TUES. EVE., JULY 15

At 7:00 P.M.

Located along Baumgardner Rd., R.D. 3, Willow Street, Pequea Twp., Lanc., Co. Pa.

Real Estate: 1½ story 7 rooms & 1½ bath frame house w/asbestos siding. Separate frame 1 story 2 car garage. Separate 36' wide by 100' long cemented block building w/cemented floor & loading dock. Separate 1½ story 24' wide by 90' long cemented block building w/9 box stalls for horses. Fenced in meadow. Total of 2.5 acres of land more or less w/300' of road frontage along Baumgardner Rd. Property open for inspection Thurs. Eve., June 26, July 3 & 10 from 7 till 8.

Sale by JOHN E. REYNOLDS FLORENCE K. REYNOLDS

Harry R. Harmon Attorney Howard Shaub Auctioneer 464-3541 and Roy C. Probst 464-3190