

# Polled Hereford Juniors have busy day in field

DOUGLASSVILLE — The Pennsylvania Junior Polled Hereford Association's field day found close to 100 enthusiastic people, ranging in age from 5 months and up, enjoying the sunshine and balmy weather here at the

Jesse Terry farm last Saturday.

One of the highlights of the day was the crowning of the new Polled Hereford queen for Pennsylvania. Last year's queen, Tammy Hamilton, Northeast, passed

her crown to Jane Sikorski, R2 Emmaus.

The daughter of John and Mildred Sikorski, Jane has had experience with the Polled Hereford breed. The Lehigh Co. family has 50 registered cattle, and one of



Jane Sikorski, Emmaus, the new Pennsylvania Polled Hereford Queen, received her crown and a bouquet of roses from last year's queen, Tammy Hamilton, Northeast, left.



The field day judging contest was won by George Hamilton, left, adult division; Paul Horning, center, 12-17 years division; and Philip McMahon, under 12 years division.

them is Jane's personal animal.

The Junior at Emmaus High School has been showing cattle for 7 years. She says showing is her

favorite hobby and she's good at it. Just 3 weeks ago she was the reserve grand champion showman at their county cattle show.

She is also a 4-year

member of the Lehigh Co. 4-H Livestock Judging team. In 1978, Jane recalled, she was the high Junior individual at the Lehigh Co. Livestock Judging Contest.

Jane commented that what she finds most difficult in judging livestock is the presentation of oral reasons. "You've got to know the terminology and have it down-pat." To help her in judging and in her responsibilities as Polled Hereford queen, Jane said she plans to work on her public speaking abilities.

At April's Little International Livestock Judging Contest Jane was the 8th high individual and a member of the first place team. Jane remarked she finds sheep the hardest to judge with cattle classes being her easiest challenge.

She got to try out her skills at the field day on Saturday. Juniors and adults alike tested their knowledge of cattle in placing two classes of Polled Herefords.

Don Kniffen, livestock specialist for Rutgers University was the official judge. He noted that for those people who didn't agree with his placings, "they'd have to adjust their thinking."

First places in the cattle judging went to: Philip McMahon, Green Lane, Montgomery Co., under-12-group; Paul Hartman, Gettysburg, Adams Co., 12-17 group; and George Hamilton, Biglerville, Adams Co., adult group.

The Juniors learned the proper fitting and blocking techniques from their president, Randy Becker, herdsman for Spring Bottom Farm, Gettysburg.

Becker pointed out that there are a lot of fads in showing, but he told the group that their goal is to make their animal look tall, long, and not real fat. "When you're showing cattle, looks mean a lot."

He concluded the demonstration and field day by noting that the Polled Hereford showmen and cattlemen need to emphasize the beef qualities of their breed -SM

# AGWAY

## AGWAY BUILDING BONANZA

Now through August 15, 1980

- New Designs
- New Beauty
- New Values

### THE NEW FARM UTILITY BUILDINGS

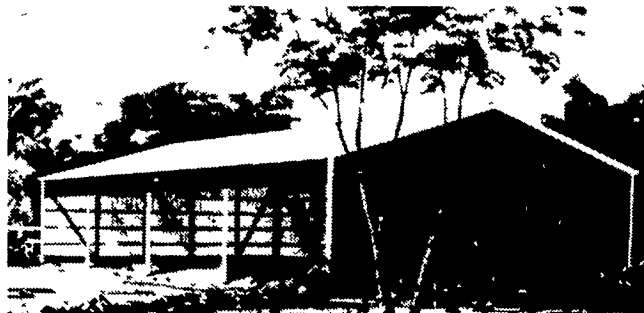


#### Farm Utility 30

- 30' x 50' x 12'
- clear span design for maximum storage space
- strong rust-free Alcoa Temper Rib® roofing
- painted steel siding in your choice of four colors
- 14' x 12' sliding door in one end wall

Special Introductory Price

**\$6890**



#### Farm Utility 40 Open

- 40' x 72' x 12'
- built with the same quality materials as the Farm Utility 30
- open front design offers easy access for trucks tractors, equipment—(no end doors)

Special Introductory Price

**\$9910**

Also Available

#### Farm Utility 40

- 40' x 72' x 12'
- closed with end door

Special Introductory Price

**\$10,835**

#### Farm Utility 50

- 50' x 72' x 12'
- closed with end door

Special Introductory Price

**\$12,830**

Some local codes may require special designs resulting in additional cost—additional options are available

Gutters shown are optional

Buy any one of four specially priced Agway buildings before August 15 and save big. You'll be getting a quality constructed Agway building with the features Agway customers have come to expect

- the Agway 5/40 Timber Column Building Warranty
- finest quality materials
- complete delivered price no hidden costs
- builder's risk insurance
- Agway's own Agri-Lease\* financing plan for qualified buyers

Check your local Agway for details or mail the coupon today

Agway Building Department  
Box 4853 Syracuse NY 13221

- I'm interested in the
- Farm Utility 30
  - Farm Utility 40 Open
  - Farm Utility 40
  - Farm Utility 50

Please send more information

Name \_\_\_\_\_

Address \_\_\_\_\_

City/Town \_\_\_\_\_ State \_\_\_\_\_ Zip \_\_\_\_\_

Phone \_\_\_\_\_

Best time to call \_\_\_\_\_

