

**JUNIATA CO.
FARM AT
ESTATE SALE
SATURDAY, JULY 19**

Located 1/2 mi. n. of Millintown, along Rt. 35, 50 mi. west of Hbg.

PARCEL #1 - 20 acres cleared, approx. 16 tillable, 8 room dwelling, lg. bank barn, road frontage.
PARCEL #2 - 71 acres cleared, approx. 63 acres tillable, stream, road frontage.

NOTE - Both Parcels will be offered separate & then as one unit, making a total of 91 acres.

FOR COMPLETE INFO, contact:

Long Bros., Auctions.
R.D. #2
Port Royal, Pa. 17082
Ph. 717-527-4784

ESTATE AUCTION

THE WILLIAM J. PIERCE COUNTRY STORE

Warwick, Pennsylvania

SATURDAY, JUNE 28, 1980

9:30 A.M.

GUNSMITHS SHOP * GUNS & EQUIPMENT *

TOOLS & STEAM ENGINES

Located on Old Rt. #23, in the Village of Warwick, 6 miles East of Morgantown, and 18 miles Southwest of Pottstown, Pa. in Chester County.

HEAVY EQUIPMENT:

German Vollmer-Werk Precision Grinder, 8" Southbend Precision M/C Lathe, Vollmer-Werk Biberach-Riss Multi Purpose Punch, Walker Turner Bench Drill Press, Foley Carbine Grinder, Foley Saw Sharpening M/C Model 51, Foley Saw Set M/C, Autool Automatic grinding M/C, Ideal German Welder, Dual Welder Model DBW-5, Burr-King B50-25, File M/C, Acme Circular saw sharpener, Saturn Sigrist & Moller AKS 600 Precision Grinder, Saturn Precision Grinder AS-4, Nelson 100 Grinder, Band Saw Toothsetting tool, Craftsman Grinder on stand, Acetylene Tanks etc.

GUNS:

Approx. 65 guns incl; Parker D/B 20 ga shotgun, (2) Parker 12 ga. D/B shotguns, Ithica 410 shotgun, LeFevre 410 D/B shotgun, Ithica 12 ga. S/B shotgun, Fox Sterlingworth 1911 12 ga, Fox Sterling worth 12 ga D/B, (3) Winchester .22 ca, (2) Winchester 12 ga, (2) Winchester 20 ga, Marlin 22, Marlin 30/30, Winchester 30/30, Winchester 45/70, Remington 22, GOLCHER LONG RIFLE W/CURLY MAPLE STOCK, (2) U.S. Springfield 22, Western Arms D/B 12 ga, GEW Mauser .257, U.S. Springfield 30.06, U.S. Springfield breech loader, Colt 22, (2) Colt 45, (3) H & R 22's, H. Pieper 12 ga D/B hammer, H. Hamilton D/B 12 ga, Stevens 22, PISTOLS: A. Waters Cap & Ball, Middtn, Conn 1848 Cap & Ball, pair U.S. Haston Co 1851 Duelling Pistols, Middtn, Conn 1838 & 1844 Cap & Balls, U.S.R. Johnson Cap & Ball, Colt "Camp Perry" 22, Colt "Woodsman" 22, Smith & Wesson, Colt Etc Handguns, 1846 U.S. Haston Muzzleloader, Civil War bayonets, (7) Civil War power flasks, Sword with Ivory handle, etc, etc.

GUN ACCESS, PARTS & HAND TOOLS:

Gun Stocks, Ammunition, Gun Carrying cases, Gun racks, shells and bullets, gun books of all types, pigeon hold, boxes, chests of tools, small anvil, animal traps, knives, scissors, elec clippers, band saws, hand saws and hand tools of all descriptions, machinist tools, open end wrenches, grinding wheels, saw blades, bench vises of all sizes, nail pullers, squares, pulleys, trouble lites, motors, belts, clamps, wire cutters, funnels, files & hammers, planes, blacksmith forge, auto jack, oak box of machinist tools, propane gas heater, 1913 thru 1919 Oval Penna Metal license tags, etc, etc

STEAM ENGINES:

Fedders 1903 Hot Air and Steam Engine, Upright Steam engine, miniature steam engines - gas powered, upright heat powered solar windmill in miniature, plus other steam engines. (Some of these steam engines were displayed in the Kinser Show)

ALSO Car Parts, Packard Instrument Panel, Ornaments, Etc 5' Globe Lighthouse Pot Belly Stove, Koehler Generator Power Plant Etc

IMPORTANT NOTICE

All Guns are from Pierce Private Collection and will be sold according to Pennsylvania Rules and Regulations. Inspection morning of sale only, since guns are not being kept on the premises, Guns sold approx. 1:00 p.m followed by heavy equipment.

TERMS: Cash

**LUCY PIERCE
WILLIAM FENNELL**
Executor

James Cunningham - Attorney
Auctioneers
Clay C. Hess 489-7127
Richard J. Moyer 948-8050

Public Sales Register

Closing Date - Monday, 5:00 P.M.
of each week's publication

THURS JUNE 26 10 00 A.M. Real Estate, Pole Barns, Farm Machinery and Poultry Complex Auction Sale to be held on Brown Road, take Rt 31 east out of Clyde, 1 1/2 miles, turn right on Brown Road Sale by Gromark of Central New York, Clyde Poultry Farm Harris Wilcox Inc., Sale managers and auctioneers

FRI JUNE 27 - 1 P.M. Fifty-Fifth Sale at Brooks End & Par-Kay Farm, Beavertown, Pa 260-head of Scotch & Irish & other foreign bloodlines Owners Reno & Park Thomas & Mark Stehr Mike Jones, Greenville, VA, Auctioneer

FRI JUNE 27 7 30 P.M. Public Sale Special Dairy Cow and Heifer Sale Held at Penns Valley Livestock Auction, Centre Hall, PA

FRI JUNE 27 - 11 00 A.M. Public Sale of Construction Equipment, Trucks, Trailers, Shop Equipment, To be held at

Delancy Excavating Inc., on Rt 10 10 miles east of Walton in Delancy, NY Sale by Goodrich Auction Service

FRI, June 27 5 30 P.M. Gap Auction Artiques and Household Goods sold at every auction Located off Rt 41, Lancaster Turkey Hill Minit Market, cross RR bridge Ira Stoltzfus & Son, Auctioneers

SAT JUNE 28 - 8 30 A.M. Public Sale of Antiques, Quilts and Household Goods Located along Pleasant View Rd, 1 mile north of Honey Brook, PA Malinda & Lydia Fisher Owners Nevin Z Martin and Lewis B Groff Auctioneers

SAT JUNE 28 - 11 A.M. Consignment Horse Sale at the Keister's Middleburg Auction Sales, Inc, Rt 522, 3 miles East of Middleburg, 5 miles West of Selinsgrove, Pa Don & Walt Keister, Owners Larry Long & Dave Imes Auctioneers

SAT JUNE 28 - 9 30 A.M. Public Sale of Valuable Farm

Lancaster Farming, Saturday, June 21, 1980-D29

Machinery, Tools, Household Goods, Antiques Located from Sunbury to Shamokin, PA Rt 61, turn right at Stonington Baptist Church sign, at second dirt road turn right to second farm along dirt road Estate of Nathan J Reigle Cam Shaffer & Son Auctioneers

SAT JUNE 28 - 9 00 A.M. Helen J Howe Estate Sale of Many Fine Antiques, Cars, Household Furnishings, Farm Items etc Located take Rt 30, 1 mile east of New Oxford, thence turning north at Cross Keys Diner onto US Rt 94, thence turning west 1/4 mile in Hamilton Twp, Adams Co, PA G Frederick Howe Executor Clair R Slaybaugh Auctioneer

SAT JUNE 28 10 00 A.M. Public Sale of Valuable Antiques and Personal Property Located next to Binner's Mill, Church St, Schaefferstown, Lebanon Co, PA Terms by Emma Swope John Fry Auctioneer H H Leid Auction Service

SAT JUNE 28 9 30 A.M. Public Sale of Antiques, Collectibles, Equipment and Building Supplies, Located along Rt 147, 1 mile south of Herndon, 1/2 mile north of Mandata, 12 miles south of Sunbury at Herr-Data Trade Center Marty Fels Owner George and Mike

SAT JUNE 28 9 30 A.M. Estate Auction The William J Pierce Country Store, Warwick, PA Located on Old Rt 23 in the village of Warwick, 6 miles east of Morgantown, and 18 miles southwest of Pottstown, PA in Chester Co Clay Hess and Richard Moyer Auctioneers

Deibert Auctioneers and Realtor

SAT JUNE 28, Wallace (Steuben Co) New York, Erickson's Complete Potato Farm Dispersal Full line of machinery including Lockwood Harvester Sale by the Pirrungs' Wayland, NY

SAT JUNE 28 - SAT JULY 5 - Mrs Charles Frederick, Sinking Valley, Blair Co, PA Will offer collection of Antiques and Antique Farm Machinery for Public Auction Watch for display adv Don Dreibelbis Auctioneer

SAT JUNE 28 - 10 00 A.M. Public Sale of Antiques, Household Goods and Farm Equipment, located along Gouglerstown Rd, to Knauers (just off Rt 222 at Gouglerstown, approx 9 miles south of Reading, follow Signs), Gouglerstown, Berks Co, PA Terms by F Harold Schaeffer T Glenn Horst and Timothy G Horst Auctioneers

SAT JUNE 28 9 30 A.M. Estate Auction The William J Pierce Country Store, Warwick, PA Located on Old Rt 23 in the village of Warwick, 6 miles east of Morgantown, and 18 miles southwest of Pottstown, PA in Chester Co Clay Hess and Richard Moyer Auctioneers

**PUBLIC AUCTION
COMBINATION STORAGE
STRUCTURE AND GRAIN
DRYING EQUIPMENT**

Wed. Evening, June 25, 1980 - 7 P.M.

Location: 65 High Street, Mullica Hill, N.J.

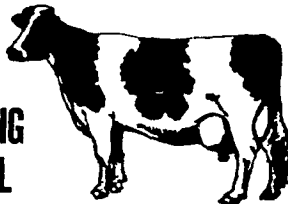
Consisting of: two 3 hp. elect. fans, two 6000 bu. grain bins, 2 upright and roof ladder kits, two transition rings, one 3200 bu. wet tank, one valve boot and slide w/ auger, two under bin unloader tubes, two incline heads w/motor drive, one grain dryer w/auto panel, one vertical auger 6x36, one vertical auger 8x36, one wet auger 8x38, steel auger brackets and motors, 300 amp 1 ph. service w/panel.

All equipment like-new, installed 1978 and in exc working condition. Inspection day of sale. Terms will be announced at beginning of sale.

**THIS EQUIPMENT IS BEING SOLD AT
ABSOLUTE AUCTION WITHOUT RESERVE.**

Sold by order of: U.S. Dept. of Agriculture, ASCS, Commodity Credit Corp.
Auctioneer: Wm. Bragdon Info: 881-5457

**JONIBE
SELECTED MILKING
HERD DISPERSAL**



Cattie will be sold at the Gordon Wood farm located on Rt. 15 between Tioga and Lawrenceville, Pa. Cattle may be seen prior to sale on Busia Farm off Rt. 549 at Jobs Corners.

THURSDAY EVENING, JUNE 26, 1980

At 8:00 SHARP

40 - SELECTED REGISTERED HOLSTEINS - 40

1980 Rolling herd ave 16055M, 625F, 3 9T, 100 percent Sire Power breeding, 7 cows proj. over 700 fat Preg. ex, interstate tested charts day of sale

Few of the top ones: Nora - 378d, 23,262, 1072F, 4 6T inc, Irene 366d, 21,845M, 786F, 3.6T, Heather 336d, 20,708M, 785F, 3.8T Inc.; Imogene 316d, 16,162M, 807F, 5 0T, Inc; Wilma 340d, 17,758M, 832F, 4 7T

Sales Mgr Note: We had the privilege of picking 40 from 69 head. This will be an opportunity that you good purebred cattle people & those wanting to get started in the purebred business should take advantage of This herd originated from the Dewey Hamilton herd with many years of top breeding. The Busia's have many satisfied customers that they have sold cattle to over the years, we think you will be too. See you Thurs evening, June 26

Terms - Cash or good check
Lunch available
Catalogs
Sale under cover

Owner
JOHN & IVA JEAN BUSIA

Auctioneer, Arlow Kiehl
Pedigree, William Kent
Sales Mgr. Gordon Wood,
Mansfield, Pa. 717-549-4901

For the most in the advertising, coverage and preparing your sale. Call Woods Auction service.

BROOKS END AND PAR-KAY FARM

**FIFTY-FIFTH
SALE**

**1980 SUMMER OFFERING
FRIDAY, JUNE 27**

1:00 P.M.

At the Farm • Beavertown, Pa.

**260 head of SCOTCH & IRISH
and other foreign bloodlines**

• Many Imported from Scotland

YORKSHIRE—LANDRACE

Born and raised on our farms from our parent imported stock.

100 * Bred gilts - most of which carry Scotch or Foreign Blood Litters.

50 * YORKSHIRE - Many carry Scotch litters.

50 * LANCRACE - All carry Scotch or Foreign Blood Litters.

50 * BOARS

30 * YORKSHIRE - New Scotch Bloodlines as well as Irish and American Bloodlines

20 * LANDRACE - All 100% SCOTCH, IRISH or other foreign blood.

100 * Commercial Open Gilts - Mostly Irish & Scotch blood. Scan-O-Probe Loin Eye & Back fat figures. Production tested - Certified Meat Proven & Show Ring Champion Stock. Certified brucellosis free & pseudorabies free. Health charts sale day for entry into any state.

4 big production wins of recent shows top indexing Yorkshire, Pen of boars, PA test station feed conversion 2.55, rate of gain 2.52

Top indexing Pen of boars, Del. test station feed conversion 2.24, rate of gain 2.44.

Second high indexing Pen over all breeds Del test station Landrace feed conversion 2.48, rate of gain 2.05.

Ohio production barrow show we had both champion and reserve champion on foot winners. They were York, Landrace crossbred barrows



IRISH BOARS and GILTS of this great Dam will sell. Greenback 3044, one of our foundation Irish Yorkshire Sows.

Owners:
**RENO & PARK THOMAS
& MARK STEHR**

RENO PARK MARK
717-658-5821 717-658-6544 717-658-7007
717-658-7304 717-658-6702
Catalogs Available
Mike Jones, Greenville, VA - Auct.