

## 480-foot heifer barn

(Continued from Page D16)

with those of a free-stall setup."

The barn is 24 feet deep and is covered by a steep-pitched roof.

The swinging gates, which the Barleys designed and fabricated from piping, provide 40 individual pen areas. Each pen includes two sections — a 12-foot-square bedding area and an equal-sized scraping aisle area.

Heifers can be confined into the bedding section by swinging the aisle side gate across the front of the bedding area. This will permit cleaning of the aisle with a skid-steer loader.

Then, the animals can be switched to the aisle section when work must be done in the bedding section.

The feeding area is covered with a smaller, lower roof overhang.

"We decided to cover this area, too, because we just don't like the feed to be rained on," Abram Barley said.

"In a way, the barn is the next thing to a big shade tree. It provides a good wind break, also.

"We think open-type confinement is the best way to raise replacements. We're utilizing nature as much as possible and getting the most out of the drying quality of the sun. You know that the

best way to get something dry is to put it out in the sun."

The barn faces 20 degrees east of due south to get the most benefit from the sun's rays. The main steep-pitched roof slopes from a height of 19 feet at the open end to 12 feet at the closed end.

There is no eave opening on the closed end to reduce drafts. The large opening facing the south provides ample ventilation.

"The drying effects of the sun should cut down on the bedding requirements and reduce the volume of manure," John Barley said.

"We have some heifers in one end already and it looks as if we will have to add bedding about once a week, similar to free stalls.

"I haven't seen an animal yet lying in the aisle and the bedding sections are staying reasonably clean."

Since the stock can be confined to either the bedding or aisle sections of each pen, the barn can be scraped its entire length with a skid-steer loader. Wastes will be scraped to the middle of the barn where a central scrapeoff opens to the rear. There it is scraped into a pit behind the barn.

The pit area will provide about a year's storage for the 300-head capacity. The pit bottom and ramp ends are to be concreted.

A variety of bedding can be utilized, including sawdust, straw or corn fodder. Since the barn makes maximum use of the sun, it's even possible that wet sawdust could be used.

The Barleys will attempt to rig an old manure spreader for distributing bedding. Higher sides could be added and the beaters slowed down to reduce the distribution pattern. A wagon could be called on when corn fodder is used.

Each pen area is designed to hold 7 or 8 animals, depending on size and age. This should provide sufficient capacity for the approximate 300 replacements the Barleys raise each year.

"We want the individual pens for several reasons," according to John Barley.

"We can keep a better eye on the smaller groups. Calves are like children. In large groups, you always have a few that are a lot more aggressive. The smaller groups cut down on these problems.

"We've been using a converted stanchion barn with individual nursing stalls and free stalls. But it only holds about 100 head.

"We went to hutches and found the calves weren't used to being confined. We had some trouble with their not wanting to lie down in the free stalls.

"We have another barn with conventional loose

## Penn Ag members set September convention

EPHRATA — Programmed for the '80's is the theme approved by PennAG Industries Association to describe the 102nd annual meeting of the agribusiness trade group scheduled September 23 to 25 at the Hotel Hershey, Hershey. Gerald Hess of Roaring Spring and Chairman of the Convention Committee said.

"We hope to expose our members to the significant and affordable changes which have occurred in the mini-computer and programmable calculators.

In addition we intend to show some of the ways electronics can be used by the typical small and medium business."

In addition, the Committee also approved major program segments on energy, transportation and the mushrooming impact of government regulation A

look at the see-saw economy is also planned.

Industry exhibits, entertainment, a ladies program and athletic events are traditional other features which will be repeated by the oldest statewide trade association of agribusiness in the U.S.

## Delaware prepares directory

DOVER, Del. — The 1980 Delaware Roadside and Pick-Your-Own Market

Directory for fruits, vegetables and honey is available from the Delaware Department of Agriculture or from local county extension agents' offices.

This is the second of a series of directories that will list the seasonal farm products sold by Delaware's Roadside and Pick-Your-Own Markets.

The directories are designated to assist people in locating Pick-Your-Own and Roadside Markets that sell fresh produce. Customers are encouraged to contact the markets before going to insure product availability. Harvest dates may vary from those listed for specific products due to weather conditions.

Listing in these directories is done on a voluntary basis.

housing and the groups are too large. Now, we can get rid of these big groups."

The automatic head-locks will be used for treatment, vaccination, blood tests and particularly for breeding.

These also will be designed and fabricated by the Barleys. In addition to swinging open for loading and unloading into individual pens, the openings will be adjustable to accommodate different aged heifers.

Feeding will be done with the same mixer wagon as is used in the free-stall cow barn.

"We like the versatility the

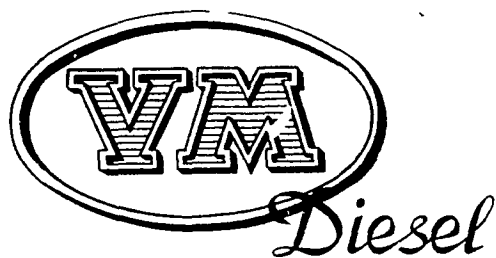
barn will give us," the Barleys emphasize.

"We'll have the small groups we want and animals can be segregated for any number of reasons.

"Calves from a special cow can be kept in an individual pen. During the winter, we may even bring in some dry cows. Bull calves could also be kept in some pens.

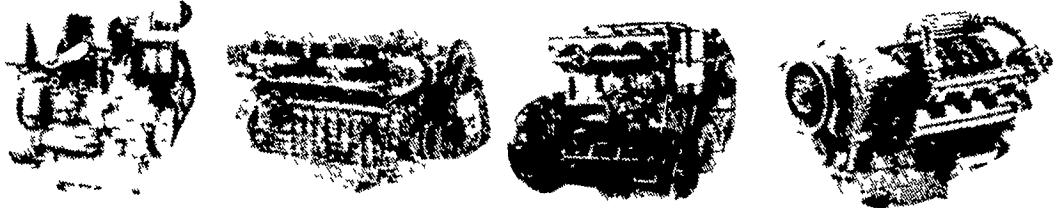
"When the animals get larger, several sections can be opened into a large pen area.

"Every section and gate is the same and we can interchange them as our needs may change."



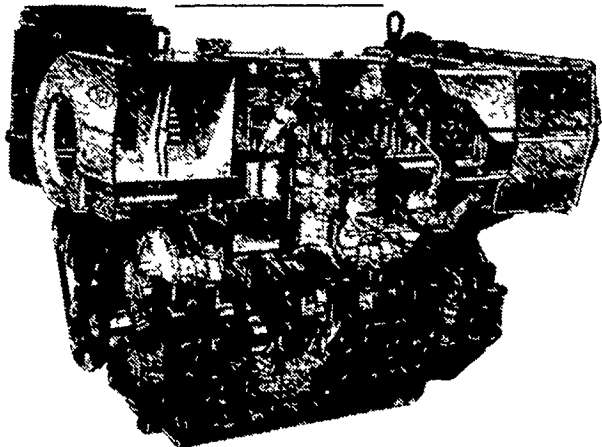
# REPOWER With VM DIESEL

Harvesters, Haybines, Tractors, Cornpickers, Balers, Hydraulic Systems, Corn Binders Choppers

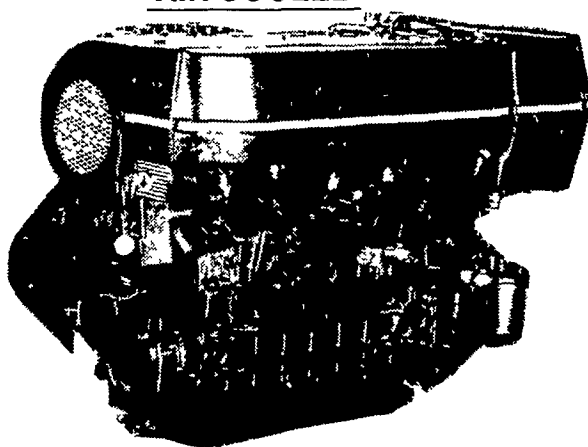


## All New HR Series

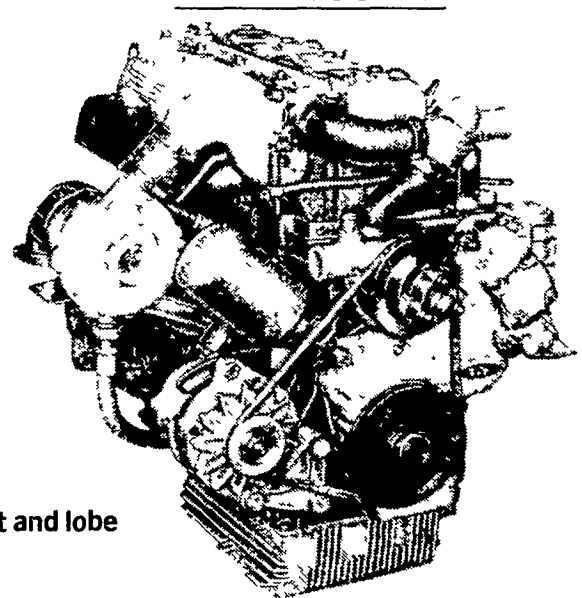
OIL COOLED



AIR COOLED



WATER COOLED



### General Features:

- Integrally cast cylinders with inserted and removable wet type cylinder liners
  - Light hypereutectic alloy pistons
  - Extra-resistant steel connecting rods alloyed with special alloy head bearings
  - Surface hardened steel crankshaft
  - Drop-forged, casehardened and tempered steel camshaft
  - Anti-friction cast-iron tappets alloyed
  - Cast-iron tunnel type crankcase
  - Rotary injection pump with mechanical governor
  - Force-feed lubrication with built-in circuit and lobe type pump
  - Diaphragm pump feed
  - Oil and fuel filters with integral type element.
- Special structure and patented engine with consequent increases in performance and easier operation with low weight/output ratio low smoke emissions.
- Engine based on a design "modulus" formula which allows a maximum parts standardization and interchangeability.

### USED DIESELS

- SR 2 Lister
- SR 3 Lister
- HRS 6 Lister
- 1 Cylinder Deutz
- DVA 2200 Sianzi

Ask For Horsepower Ranges Of Above  
THE "RIGHT FROM THE START" DIESEL ENGINE LINE  
FOR FAULTLESS PERFORMANCE

SPECIAL: VM 1306 V SERIES

# QUEEN ROAD REFRIGERATION

Box 67, Intercourse, PA 17534  
Phone: John D. Weaver - 717-768-9006 or 768-7111  
or Answering Service - 717-354-4374

24 HOUR SERVICE