


Ewe sale conducted in Md.

FRESH COWS **EVERY WEDNESDAY IS** **SPRINGERS**



DAIRY DAY

AT NEW HOLLAND SALES STABLES, INC.
New Holland, PA

If you need 1 cow or a truck load, we have from 100 to 200 cows to sell every week at your price. Mostly fresh and close springing holsteins.

Cows from local farmers and our regular shippers include Marvin Eshleman, Glenn Fite, Kelly Boser, Bill Lang, Blaine Hoffer, Dale Hostetter, H.D. Matz, and Jerry Miller

SALE STARTS - 12:00 SHARP
Also Every Wednesday,
Hay, Straw & Ear Corn Sale - 12:00 Noon
All Dairy & Heifers must be eligible for Pennsylvania Health Charts.

For arrangements for special sales or herd dispersals at our barn or on your farm, contact:
Abram Diffenbach, Mgr.
717-354-4341
OR
Norman Kolb
717-397-5538

HEIFERS **BULLS**

The first Tri-State Replacement Ewe Sale was held Saturday, June 7, in Knoxville, Md.

The breeding on the 132 ewes available for sale was quite varied, including Corriedale, Cheviot, Dorset, Suffolk, Hampshire, Rambouillet and Finn crosses. The majority of the ewes were crossbred and all had records available on the date of birth, type of birth, sire type, dam type, lambing records in the case of mature ewes, and 90-day weights in the case of ewe lambs.

The top selling ewe for the day was consigned by Clark Jamison of Glenville, W.Va. The four-year old triplet-born Hampshire X Suffolk sold for \$115 to Sheila Fleck of Meymar, Md.

The top selling yearling ewes were two Hampshire X

Suffolk twin-born ewes consigned by Manley Zunn of Cox's Mill, W. Va. They sold for \$105 apiece to Eric Ackerman of Emmitsburg, Md.

The top selling ewe lamb was a March-born Finn X Hampshire consigned by Merry Peep O'Day Farm of Knoxville, Md. She sold for \$97.50 to Danny Virts III of Waterford, Va.

Only three yearling rams were offered for sale with the top price of \$160 being paid by Peter Snellman of Hollywood, Md. for a registered Suffolk twin consigned by Jonathan May of Timberville, Va.

There was a good turnout for the sale, which was held at Merry Peep O'Day Farm, with buyers from Va., Md., W.Va., and Pa. Mike Jones of Greenville, Va. was the auctioneer and Bambi and Jim Prigel of Merry Peep O'Day Farm managed the sale.

This was the first sale of its type for commercial sheep producers in Maryland in many years. Plans are being made for it to be held as an annual event.

BARN PAINTING

Call Us Now
For Free
Estimates

PHARES S. HURST
RD 1, Box 420
Narvon, Pa 17555
215-445-6186

BRUNING Paint Company



Yearling ewes consigned by Jonathan May, Timberville, Va., were among 132 head offered for sale at the first Tri-State Replacement Ewe Sale held in Knoxville, Md.

Help available for chubbies

UNIVERSITY PARK — Statistics are frightening for those who carry around excess pounds, but being fat doesn't have to be. Penn State correspondence course emphasizes the sensible way to lose weight permanently.

This 6-lesson course lists hints to modify eating habits. Other lessons concentrate on how to reduce weight, steps to take to prevent children and infants from becoming chubby, a lengthy discussion on fads and fad diets, and

atherosclerosis, coronary heart disease, and physical fitness and the overweight person.

To obtain a copy of this course, send \$3.50 plus 75 cents handling to Weight, Box 5000, University Park, PA 16802. Make your check payable to Penn State.

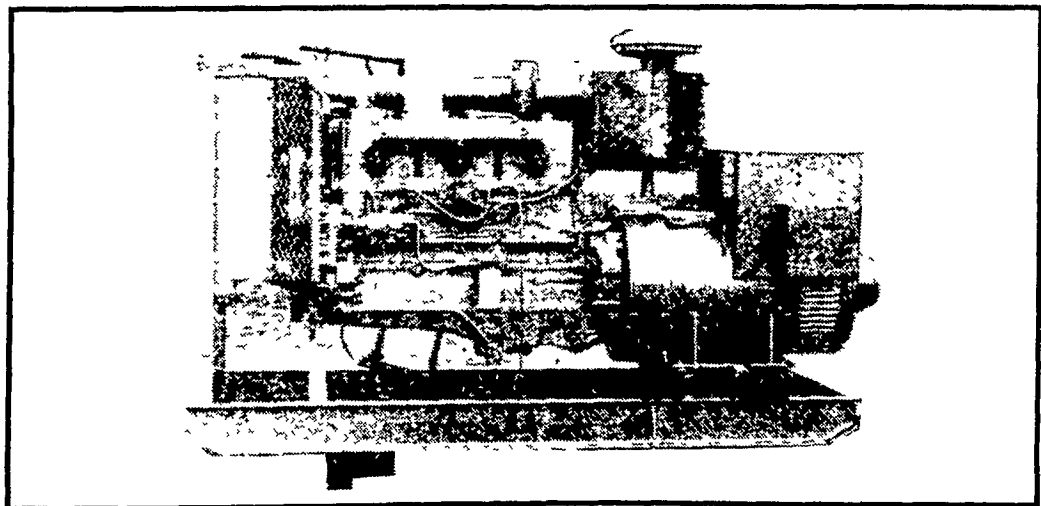


BALANCED DESIGN ELECTRIC POWER SYSTEM

Designed and Manufactured by,
MARTIN MACHINERY

For Emergency or Prime Power 1 to 1000 KW
BALANCED DESIGN to Give You Peak Performance
for Your Application:

• FARM • INDUSTRIAL • COMMERCIAL • RESIDENTIAL



210 KW Cummins Diesel

USED GENERATORS AVAILABLE

Engine Sets

200 KW Allis Chalmers diesel
25 KW Allis Chalmers gas
133 KW Detroit diesel
3.5 KW Onan gas 1800 RPM

PTO Units

25 KW Fidelity with trailer
25 KW Winpower 3 pt. hookup
25 KW Kurz & Root with trailer (Brushless)
15 KW Generac with trailer
15 KW Surge without trailer
(2) 25 KW Onan
25 KW Katolight

We Also Have Special Designed Switch Gears
Manufactured by Westinghouse to Our Specifications

MARTIN MACHINERY

P.O. BOX 35, MARTINDALE, PA 17549
Bus. Ph: 215-445-4800

Res. Ph: 215-267-7771



John Deere Introduces a bigger "Little-Big" Tractor — the 33-PTO-HP* 1050 Diesel

The new John Deere 1050 Tractor is like no other ever to wear the leaping deer emblem. Powered by a turbocharged 3-cylinder diesel engine it delivers more power, better fuel economy and fewer emissions than a comparably-equipped tractor with naturally aspirated engine. But that's not the only news about the new 1050. It also has a continuous-running 540-rpm PTO for better productivity, and an optional mechanical front-wheel drive system for added pulling power when and where you need it. Other standard features include Category 1 load-and-depth-sensing 3-point hitch swinging drawbar color-coded controls and dash-mounted electronic fuel gauge.

See us soon for a 1050 Tractor demonstration. Ask about our full line of implements including the new 75 Front Loader.

*Maximum PTO horsepower measured at 2400 engine rpm by official test.

ADAMSTOWN EQUIPMENT INC.

Mohnton, RD2, PA 19540
(near Adamstown)
Phone (215) 484-4391



A. B. C. GROFF, INC.
New Holland, PA
Phone (717) 354-4191

LANDIS BROS. INC.
Lancaster, PA
Phone: (717) 291-1046