



THE OLD FARMER'S ALMANAC

JUNE 16-22, 1980

Clouds build up 'til sky fills up.

School is over for most kids this week Bernard Baruch died June 20, 1965 First quarter of the moon June 20 Average length of days for the week, 15 hours, 18 minutes Madison Square Garden opened in NYC June 16, 1890 Summer begins June 21 at 0 47 A M EST Little strokes fell great oaks



Ask the Old Farmer: Do you know where or how the saying came from about all the cows lying down in the fields before it's going to rain? F B, York, Penn

Some old codger years ago put

two and two together after a while They do, you know, and it does
Home Hints Spread sawdust on grass for a richer green

OLD FARMER'S WEATHER FORECASTS

New England: Partly sunny, with showers becoming thunderstorms south midweek, weekend is sunny and warm
Greater New York-New Jersey: Showers becoming heavier, cloudy skies, throughout the week
Middle Atlantic Coastal: Clear and warm beginning of week, then heavy thundershowers middle of week through week's end
Piedmont & Southeast Coastal: Clear and warm through midweek, middle through end of week is cool, thundershowers

(All Rights Reserved Yankee Inc Dublin NH 03444)

G&M Livestock

Duncansville, Pa.
Monday, June 9

Report supplied by auction
Market reported steers-steady, cows-higher, hogs-higher.

DAIRY COWS: 720.00-1220.00.

STEERS: High Choice and Prime 62.00-64.30; Good to Choice 58.00-62.00; Good 55.00-58.00; Standard 52.00-55.00.

HEIFERS: High Choice and Prime 58.00-62.00; Good to Choice 54.00-58.00; Standard 48.00-54.00.

FEEDERSTEERS: Good to Choice 300-500 lbs. 65.00-80.00; Standard to Good Heifers 300-700 lbs. 60.00-74.00.

BULLS: 1200-1444 lbs. 54.00-59.25; 900-1200 lbs. 50.00-56.00.

COWS: High Choice-Prime 46.00-48.00, few to 59.10; Good 44.00-46.00; Utility 42.00-44.00; Cutters 40.00-42.00.

CALVES: High-Choice 90.00-108.00; Good to Choice 80.00-90.00; Standard to Good 70.00-90.00.

FARM CALVES: Hol. Bulls 90.00-119.00; Hol. Heifers 100.00-150.00.

FEEDER PIGS: 15-25 lbs. 10.00-15.00; 25-50 lbs. 15.00-23.00.

HOGS: 200-240 lbs. 31.00-33.20, few to 33.60.

SOWS: 22.00-30.00.
BOARS: 18.00-29.00.
LAMBS: 55.00-62.50.
SHEEP: 20.00-30.00.

Baltimore USDA

West Friendship, Md.
Monday, June 9

Report supplied by auction
CATTLE 275: Slaughter steers and heifers \$1.00-1.50 higher. Cows \$1.50-2.00 higher. Bulls \$3.00-4.00

higher. Supply 40% slaughter steers and heifers, 35% cows, 20% feeders, balance bulls.

SLAUGHTER STEERS: Choice 2-4 960-1425 lbs. 61.75-63.60; few Good and Low Choice 2-4 900-1125 lbs. 59.00-60.55.

SLAUGHTER HEIFERS: Choice 2-4 825-1225 lbs. 60.60-62.10. Good and Choice 2-3 850-1200 lbs. 58.60-59.85; Good 2-3 800-1000 lbs. 54.00-58.50.

COWS: Utility 44.00-50.75; individual 51.60; few Cutters 41.75-46.50.

BULLS: YG 1-2 1040-2000 lbs. 53.75-61.75.

HOGS 800: Barrows & Gilts 75 cents higher. US 1-2 200-240 lbs. 32.00-32.25, few 32.50; US 2-3 230-260 lbs. 31.25-32.00.

SOWS: \$1.00-2.00 higher. US 1-3 300-600 lbs. 24.00-26.00.

FEEDER CATTLE: Steers - Medium Frame #1 685-775 lbs. 62.50-67.60; Several 385-615 lbs. 73.00-77.00. Heifers - Medium Frame #1 425-500 lbs. 60.00-62.50.

VEAL AND CALF AUCTION 25: Choice 200-240 lbs. vealers 90.00-98.00; few Good and Choice 90-110 lbs 71.50-86.00; few calves returned to farm 74.00-91.00.

SHEEP AUCTION: Pkg Choice Spring slaughter lambs 95 lbs. 70.00; few Good slaughter ewes 160 lbs. 20.50

HEIFERS: Several loads Choice and Prime 3-4 and Choice 3 939-1129 lbs. 64.75-65.00. Choice 2-4 900-1100 lbs.

Lancaster Feeder Cattle

Friday, June 6
Report supplied by USDA

Today 269
Last Friday 450
Last Year 395
Auction not covered.
Reporter at conference.

Livestock market and auction news

Omaha Cattle

Thursday, June 12

Report supplied by USDA

Midweek prices on Slaughter Steers and Heifers ranged 1.00-1.50 higher under a generally good demand by all buying interests. Cows were 2.00-3.00 higher and bulls 1.00-2.00 higher.

Four Day Receipts: 15,600; Last week 14,300; a year ago 10,700.

Slaughter Steer and Heifer prices trended higher in reflection of advancing prices on carcass beef at the wholesale level. Most interests came into the period in need of cattle for immediate requirements and were aggressive for numbers. Trading was active most days on fairly liberal supplies and some price advance was noted on three successive days. Midweek prices were generally at the highest level since late March. Further stimulation was provided at midweek by a moderate feeder buying demand for 1025-1125 lb. Steers suitable for a short turn in the feedlot. The consist again included a fair percentage Choice Steers and Heifers and a number of loads Choice and Prime. Slaughter Steers made up approximately 48 pct and Heifers 29 pct. Cows comprised 12 pct and Feeders 7 pct.

STEERS: At midweek, load and part load Choice and Prime 3 with end 4 1188-1257 lbs. 66.50, few loads Choice with end prime predominantly 3 1125-1205 lbs. 66.25. Choice 2-4 1025-1300 lbs. bulked 65.00-66.00, some predominantly 3 66.25, some with increased percentage 4 1200-1300 lbs. 64.50-64.85. Mixed Good and Choice 2-3 1000-1250 lbs. 64.25-65.00. Good 2-3 61.50-63.75. Good and Choice 2-3 1200-1586 lb. Holsteins 57.50-60.00.

Average of LS-214 detailed quotations for Choice 900-1100 lb. Steers this week 65.55; Choice 1100-1300 lbs. 65.22. Average cost Slaughter Steers this week 64.86 Average weight 1170 lbs. as compared 63.78 and 1167 lbs. week ago. Average cost Heifers 62.72, average weight 1017 lbs. as compared 62.00 and 1016 lbs. week ago.

HEIFERS: Several loads Choice and Prime 3-4 and Choice 3 939-1129 lbs. 64.75-65.00. Choice 2-4 900-1100 lbs.

63.25-64.50. Mixed Good and Choice 2-3 875-1050 lbs. 62.00-63.50. Good 2-3 58.50-61.50.

COWS: Utility and Commercial 2-4 43.50-46.50, some high-dressing Utility 47.00. Cutter 43.00-46.00. Canner and low-cutter 42.00-44.00.

BULLS: 1-2 1200-2200 lbs. 52.00-57.00, individual 1 58.00-60.00.

FEEDERS: Approximately 10 loads Medium Frame 1 981-1143 lb. Steers 64.85-66.50.

Shenandoah Valley Livestock

Saturday, June 7

Report supplied by auction

STOCKER, FEEDER, AND SLAUGHTER CATTLE: Good Light Steer Calves 82.00-87.00; Medium 77.00-82.00; Plain 72.00 and down; Good Heavy Steers 67.00-71.00; Medium 62.00-67.00; Plain 57.00 and down; Holstein Steers 46.50 and down; Good Light Heifer Calves 72.00-77.00; Medium 67.00-72.00; Plain 62.00 and down; Good Heavy Heifers 57.00-60.00; Medium 52.00-57.00; Plain 47.00 and down; Slaughter Cows 42.00-47.75; Utilities 37.00-42.00; Milk & Stock Cows 70.00 and down; Stock Bulls 71.00 and down; Slaughter Bulls 59.25 and down.

CALVES: Veal Calves 87.00 and down; Baby Calves 125.00 and down.

SHEEP & LAMBS: Choice Blue O 71.00; Good Red O 65.85; Feeder Lambs 59.00-62.00; Slaughter Ewes 20.75 and down.

HOGS: Top 31.80; Heavy 28.00-30.00; Medium 30.50; Light 26.75; Sows 23.50-27.00; Boars 19.25 and down.

New Holland Dairy

New Holland, Pa.
Wednesday, June 11

Report supplied by auction
Reported receipts of 64 cows, 39 heifers, and 4 bulls. Market steady.

Load of Pa. fresh cows, 990.00-1220.00; Load of NY fresh cows, 1325.00-1700.00, springers 1300.00-1725.00; Load of Pa. fresh cows, 1400.00-1460.00; Load of Pa. fresh cows, 1080.00-1450.00. Locally consigned cows, 850.00-1200.00; Springing heifers grade 1025.00-1375.00; Open Heifers 350.00-450.00; Bulls 490.00-835.00.

Hunter's Auction

Rising Sun, Md.
Monday, June 9

FEEDER HEIFERS:

Good to Choice 50.00-57.00.

FEEDER STEERS:

Standard to Good 65.00-70.00.

BULLS: 500-800 lbs. 49.00-66.00; 800-1300 lbs. 50.00-56.00.

COWS: High Choice to Prime 48.00-49.50; Good to Standard 46.75-47.50; Utility 45.25-46.00; Cutters 44.00-45.00; Canners 39.50-43.00.

CALVES: Prime 200-280 lbs. 85.00-97.00; High to Choice 140-180 lbs. 85.00-99.00; Good to Choice 120-140 lbs. 80.00-94.00; Standard to Good 90-110 lbs. 84.00-107.00; Utility 75-85 lbs. 70.00-87.00; Low Utility 65-75 lbs. 55.00-79.00.

FEEDER PIGS: 20-25 lbs. \$8 to \$12 by hd.; 25-35 lbs. \$18 to \$22 by hd.

COWS: 23.50-27.00.
BOARS: 23.00-25.50.

GOATS: Billies \$30 to \$42 by hd.; Nannies \$25 to \$30 by hd.; Kids \$18 to \$22 by hd.

Indiana Auction

No report due to holiday.

Chambersburg Auction

No report due to holiday.

New Holland Horse

Monday, June 9
New Holland Sales Stables

Report supplied by auction
Reported receipts of 350 head of horses, mules, and ponies. Market lower.

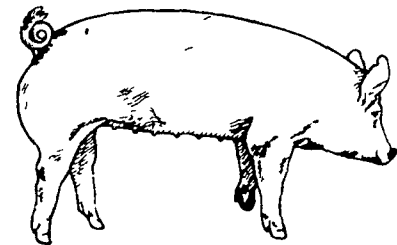
Better horses 525.00-1000.00; Driving horses 350.00-1425.00; Riding horses 325.00-475.00; Lightweight killers 325.00-475.00; Heavyweight killers 525.00-700.00; Mares 35.00-70.00; Colts 15.00-35.00; Geldings 35.00-70.00; Larger Ponies 125.00-250.00.



PERKIOMENVILLE LIVESTOCK & SALES

Perkiomenville, PA
Sale Every Monday

Egg Auction - 12 Noon
Dairy Cows 2 P M
Hogs - 4 P M
Steers, Bulls Cows - Starting at 5 P M
Also
Flea Market starting at daylight
PH: 215-234-4733



PENN PACKING BUYING STATION

At Green Dragon Livestock Sale
1 mile north of Ephrata, Pa.

WILL BE CLOSED FOR PLANT VACATION
June 30 to July 4th
Have a Happy Fourth of July!

Will Reopen Monday, July 7th

ATTENTION FARMERS!!

SPRAY MATERIALS

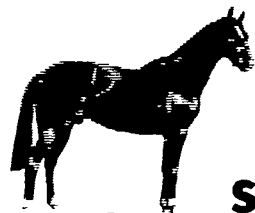
IM-PRUV-ALL

MEDINA SOIL ACTIVATOR

Check Our Prices Before You Buy.

MELVIN R. WEAVER

2213 Leabrook Road, Lancaster, PA 17601
Ph: 717-898-8354 or 569-6576



ONE LOAD OF KENTUCKY STANDARD BRED

DRIVING HORSES

by Kore L. Yoder

— To Be Sold —

Monday, June 23

At New Holland Sales Stables,
New Holland, Pa.

Guthrie, Kentucky
502-265-2747

SECHLER'S POULTRY, INC.

BUYERS & SELLERS OF LIVE

Leghorn, Medium, Heavy Fowl, Broilers & Roosters

We use our own live haul rigs

COVERING EASTERN U.S. & CANADA

CALL 215-488-7617 for price quotes.

Box 55, Strausstown, PA 19559

SCOTT SECHLER

