

# WE BELIEVE THAT GOOD MANAGEMENT PLUS A HARVESTORE® SYSTEM WILL PROVIDE...

- ★ A Better Family Life
- ★ Extra Profits
- ★ Expansion Without Extra Acres

## HERE'S WHAT PENN-JERSEY HARVESTORE® OWNERS SAY:

**TITUS H. BEAM**  
Elverson, PA

Titus says:

"Comparing the building where I feed dry feed and the building where I feed wet feed, I find wet corn feeds pound for pound the same as dry."

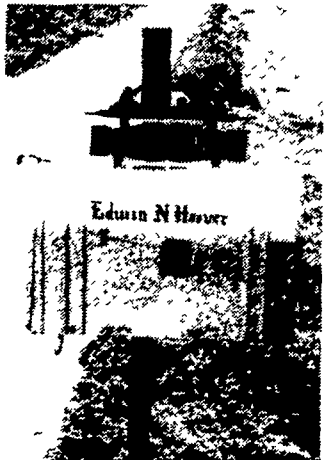


"What I like most about HARVESTORE® system farming is that there are no drying costs and much less handling. Feeding High Moisture Corn to my hogs has eliminated my grinding. I know that my cost to feed a hog is less on High Moisture Corn."

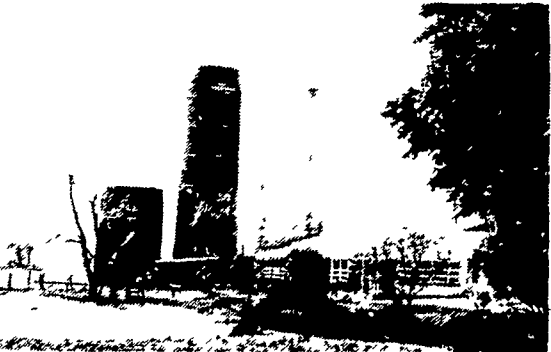
**EDWIN N. HOOVER**  
Ephrata, PA

Edwin says:

"Since going to the HARVESTORE® System, we feed 70 cows for the same amount of feed dollars as we used to spend on 35 cows. Milk production has risen 8.75 lbs. per cow per day and butterfat is up 5 points. The increase is 3000 lbs. per cow per year in milk and 175 lbs. in butterfat."



"We fed High Moisture Ground Ear Corn from a conventional silo for years. It seems to smell good, but the butterfat never tested good. We switched to HARVESTORE® High Moisture Shelled Corn in the fall of 1979 and it appears that the HARVESTORE® Structure will pay for itself in one year in feed savings and increased milk production."



**JOHN A. BRUBAKER, JR.**  
Christiana, PA

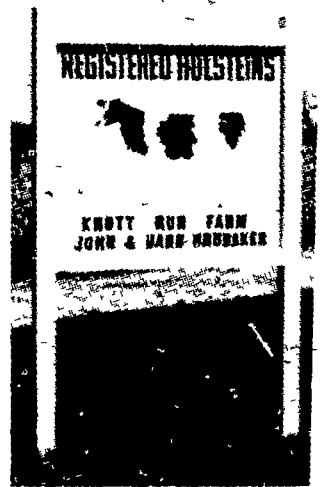
John says:

"Since starting on HARVESTORE® High Moisture Corn in November of 1979, I've saved \$1,000 per month on feed bills."

"The cows tend to peak earlier in lactation and hold the peak production longer on High Moisture Shelled Corn. There's no separation of feeds like there was when I blew feed into the feed bin."

"In spite of lower quality forage, the production and butterfat levels stayed the same as last year, yet the feed bill dropped \$1,000 per month."

"It appears I was paying for a HARVESTORE® High Moisture Corn unit without even having one on the farm."



### WITH RESULTS LIKE THESE . . .

### WOULDN'T YOU REALLY RATHER HAVE A HARVESTORE®?

Take a  
**HARVESTORE®**  
Tour

SEE  
For  
**YOURSELF!**

No Obligation to Buy!



## Penn-Jersey HARVESTORE® Systems, Inc.

P.O. BOX 7

NEW HOLLAND, PA 17557

Phone 717-354-4051

