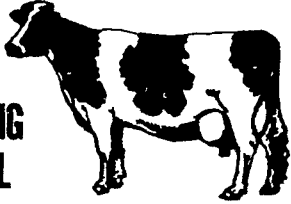


Sale Reports

JONIBE SELECTED MILKING HERD DISPERSAL



Cattle will be sold at the Gordon Wood farm located on Rt. 15 between Tioga and Lawrenceville, Pa. Cattle may be seen prior to sale on Busia Farm off Rt. 549 at Jobs Corners.

THURSDAY EVENING, JUNE 26, 1980

At 8:00 SHARP

40 - SELECTED REGISTERED HOLSTEINS - 40

1980 Rolling herd ave. 16055M, 625F, 3 9T, 100 percent Sire Power breeding, 7 cows proj. over 700 fat. Preg. ex, interstate tested charts day of sale.

Few of the top ones: Nora - 378d, 23,262, 1072F, 4.6T inc., Irene 366d, 21,845M, 786F, 3.6T, Heather 336d, 20,708M, 785F, 3.8T Inc.; Imogene 316d, 16,162M, 807F, 5.0T, Inc.; Wilma 340d, 17,758M, 832F, 4.7T.

Sales Mgr. Note: Watch for full listing on this good herd. We had the privilege of picking 40 from 69 had. This will be an opportunity that you good purebred cattle people & those wanting to get started in the purebred business should take advantages of. This herd originated from the Dewey Hamilton herd with many years of top breeding: The Busia's have many satisfied customers that they have sold cattle to over the years, we think you will be too See you Thurs. evening, June 26.

Owner

JOHN & IVA JEAN BUSIA

Sales Mgr. Gordon Wood,
Mansfield, Pa. 717-549-4901

For the most in the advertising, coverage and preparing your sale. Call Woods Auction service.

PUBLIC SALE

Of Real Estate &
Personal Property

THURS. EVE., JUNE 19

At 6 P.M.

Located along Rt. 23 in the Village of Goodville, East Earl Twp., Lanc. Co., PA.
REAL ESTATE AT 7 P.M.

2½ sty. frame house with asbestos siding. 1st flr. has beautiful cherry kitchen with dishwasher & refrigerator, also dining rm., living rm. & utility rm., plus ½ bath. 2nd flr. has 5 bedrooms & full bath. Full basement, new coal or wood hot air heater with part electric baseboard for backup. Water supply well & pressure system.

Woodworking Shop — 24'x60' frame, cement floor, 3 phase 200 amp. elec. service, also water, plus 24'x24' storage on second flr. 12'x30' brooder house & 13'x26' metal barn or stable for horse.

Ground: Approx. 1½ acres all open usable ground. Some in pasture, terrain mostly gentle slope, nice garden area, large old shade. Inspection anytime by appt.

Terms: 10% dn. day of sale, 45 day settlement.

Personal Property

Farmall Super A Tractor with 2 Way Plow & Cultivator Hydraulic Lift PTO & Pulley in excellent cond., 2 Section Spring Tooth Harrow on wheels.

Woodworking Equipment

10" Table Saw — Powermatic with Extended Table; 42" Drum Sander — Heath Mach. Co.; 12" Planer Bellsaw; 12" 3 phase Arm Saw DeWalt; 9' Stroke Sander — 6"x30" Belt, Blower System & Duct Work; Robnson Industrial Shaper — 1" Spindle 2 Speed; 1 Air Drive Sander Straight Line; Jigs & Patterns for Gothic Curved & Raised Panel Doors; Shaper Knives — S-Allay Tipped 2 & 3 Wing Cutters; 1 Rail & Style Cutter 3 Wing; 1 B Lap Cutter 3 Wing; 1 Tennan Cutter 3 Wing; 1 C Lap Cutter 3 Wing; 1 Raised Panel Cutter 2 Wing; Approx. 300' of well seasoned walnut & cherry boards.

1 cord Firewood; Fence Controller Super Model H 50; 21" Self Propelled Mower; 24 lb. Scale; 20' Ladder; Steel Fence Posts; 1000' Old Barn Boards; 3 pt. Bdrm. Suite Box Spring & Serta Mattress; 3 pc. Bdrm. Suite, Box Spring & Simmons Mattress; Coffee Table; Oak Chair; Good Swivel Chair; Clothes Tree; Metal Wardrobe; Metal Bookcase; End Tables; Bureau; Metal Clothes Rack; Good Platform Rocker; Treadle Sewing Machine; 4 New Quilts; Rinse Tubs; Berry Boxes, like new & other items not mentioned.

Terms By,

WAYNE G. & MARY S. MARTIN

Elton & Alvin Horning Auctioneers
HORNING FARM AGENCY, INC.

Main Street
Morgantown, Pa.
215-286-5183

Not Responsible For Accidents

A Large Public Sale of nice antiques was held June 4 from the Ruth S. Byrne Estate, Hanover and Mrs. Richard F. Mallin III of Fredericks at Redding Auction Service, located 3 miles north of Gettysburg, Pa.

Items sold included: Walnut 2 piece arch door Corner Cupboard \$2700, Desk \$5500, Set of 6 Chippendale Centennial Chairs \$375 each, 74 pc. Stief Sterling \$1950, Ladies \$150 Diamond Ring \$1700, Orientals Rugs up to \$1600, Tables up to \$550 each, Crocks up to \$150, and 100 pc. Fiesta China \$350.

C. David Redding was the auctioneer.

The Gap Auction held their weekly Friday sale on May 30, located off Route 41 in Gap, Pa.

Items sold were: Case Riding Tractor & Mower

\$1305, Fluting Iron \$75, 6" Jounter \$120, Jugs \$18 to \$30, Wash Stand \$80, Old Red Cupboard \$350, Deacons Bench \$90, German Luger Pistol \$195, Victorian Parlor Suite \$100, Dough Box \$70, 4-drawer Spool Cabinet \$75, Rye Basket \$130, Wicker Baby Carriage \$70 and Oak Round Table \$160.

Ira Stoltzfus & Son and Jay Leary were the auctioneers.

A Public Sale of real estate was held June 7 by Alma N. Martin in the village of Bowmansville, Lanc. Co., Pa.

The property included a 6 room frame dwelling and a 2 car garage and was sold for \$33,000 to Herbert Horning of Reinholds, Pa.

Auctioneers were LeRoy S. Horst and Paul W. Horst of Bowmansville, Pa.

A Public Sale of antiques and household goods was

held June 7 by Joseph S. McKelvey, south of Lancaster, corner of River Road and McKelvey Lane.

Some prices received were: Copper Kettle \$320, Cast Iron Triple-Leg Floor Lamp \$300, Wash Stand \$280, Bench Table \$610, Bureau \$200, Kas Wardrobe \$140, Sleigh Bells \$90 & \$155, Copper Washboiler \$100, Round Oak Extension Table \$450, Butler Desk \$175, Wagon Seat \$75, Dinner Bell \$122.50 and Crocks \$5 to \$42.

J. Everett Kreider & Steve Petersheim were the auctioneers.

A Public Sale of farm machinery was held June 7 by Speece Dairy, 8 miles north of Harrisburg on McKelvey Road.

Prices received were: MF 300 Combine \$3800, Grove Wagon (no running gear) \$1825, Grove Wagon w/running gear \$1925, N.H. 77 Baler \$410, 1959 Minn. Molne 445 Tractor \$1025,

J.D. 2010 D. Tractor \$1400, Corn Planter \$320, Ford Plow \$300, small Manure Spreader \$110 and 100 bu. Wheat \$210.

Doug Major was the auctioneer.

A Public Sale of hardware and ammunition was held June 7 by Fred L. Denlinger, in New Providence, Lanc. Co., Pa.

Items sold included: 410 Gauge Shells \$4.25 a box, 22 Longs \$9 a box, 32 Shells \$7 a box, 30-30's \$7.50 a box, Garden Rakes \$8.50 ea., Stapling gun \$12.50, Shovels \$9 to \$17 ea., Tobacco Shears \$13 ea., Garbage Cans \$8, Lunch Boxes \$6 ea., Oil Heater \$21 and Sledge Hammer \$13.50. There were over 1300 sales made.

Robert E. Martin & Son and Frank L. Steller were the auctioneers.

ANNUAL SPRING AUCTION

DISCONTINUED, DAMAGED, OBSOLETE ITEMS

TUESDAY-EVENING, JUNE 17

5:45 P.M. on Wickes Parking Lot...

Corner of Route 272 and Garden Spot Road, Ephrata, Pa.

**Wickes
Lumber**

ASSORTED LUMBER: 2x3, 2x4, 2x6, 2x8, 2x10, 2x12, check- ed, warped and weathered.

TREATED POSTS: 4 x 6 and 6 x 6

ALL WEATHER WOOD: 2 x 4 and 4 x 4

12 - 28 ft. trusses 4/12 pitch w/overhang; 2-28 ft. gable trusses

12 - 28 ft. trusses 4/12 pitch, 12-26 ft. gable trusses 4/12 pitch w/overhang.

STEEL FARM GATES: 1-10 ft., 2-16 ft. Aluminum farm/roof- ing, green, gold, red and plain aluminum; 14 ft. and 16 ft. lengths. Steel farm roofing, brown, blue, gold; 16 ft. lengths.

1-28 x 36 twin Andersen window, 1-28 x 14 twin Andersen window, 1-Andersen 6 ft. vinyl patio door (less handle), 1-Crestline 6 ft. patio door - damaged screen, 2-35 in. x 35 in. sliding wood windows with insulated glass, 1-26 in. x 66 in. case- ment window.

ALUMINUM SLIDING WINDOWS: 6-4 ft. x 4 ft. white, 2-4 ft. x 2 ft. white, 2-3 ft. x 4 ft. Bronze, 1-3 ft. x 3 ft. bronze and 6 ft. x 4 ft. windows.

ASSORTED SIZE STORM DOORS: WHITE AND BRONZE, 2-9 x 7 wood garage doors (slightly damaged or parts missing). 1-9x6/6 white fiberglass display door. 2-30x80 prehung doors, slightly damaged. 1-28 x 80 colonial bifold door (perfect condi- tion). 1-36 x 80 steel door only w/diamond glass insert.

1 - 30 gal. electric water heater and 1-52 gal. electric water heater, 1-5 ft. white steel bathtub, 2-30 in oak vanity cabinets, 2 pr. 14" x 19" half bavarian shutters and 2 pr. 14" x 38" assorted aluminum and plastic shutters.

10 sq. hallmark roof shingles, 15 dbl. cedar hand split shingles and 34 dbl. 24 in. cedar shingles, also assorted end of run and colors. 6 sq. DBL 5 cream aluminum siding, 3 sq. 8 in. yellow and 3 sq. 8 in. red aluminum siding. Some accessories to match.

19-8 ft. concrete and steel basement posts. Chainlink fence accessories. 2-12 ft. single aluminum ladders, hardware, paint, carpet and vinyl remnants.

MANY OTHER ITEMS TOO NUMEROUS TO MENTION.

ALL ITEMS WILL BE SOLD.

**Wickes
Lumber**

T. Glenn Horst,
Auctioneer

Lunch Stand By
Akron Fire co.

