

Kick the cucumber beetle off vine crops

UNIVERSITY PARK — It is practically impossible to grow cucumbers, melons, and squash if you're not controlling the cucumber beetle, says Penn State's Robert Tetrault, Extension entomologist.

According to Tetrault, the striped cucumber beetle is about 1/4 inch long. It has a black head set against a bright yellow thorax (section behind the head).

The beetle's wings are

yellowish green in color and are decorated with three black stripes.

A slight variation to the striped cucumber beetle is its cousin the twelve-spotted cucumber beetle. This close relative is distinguished by its six black spots on each wing cover.

Finding a safe, warm place to rest out the cold Winter, these crafty beetles wait out the coming of Spring. So that they are well

prepared for their attack on the seasons vine crops, they emerge before their favorite foods are available.

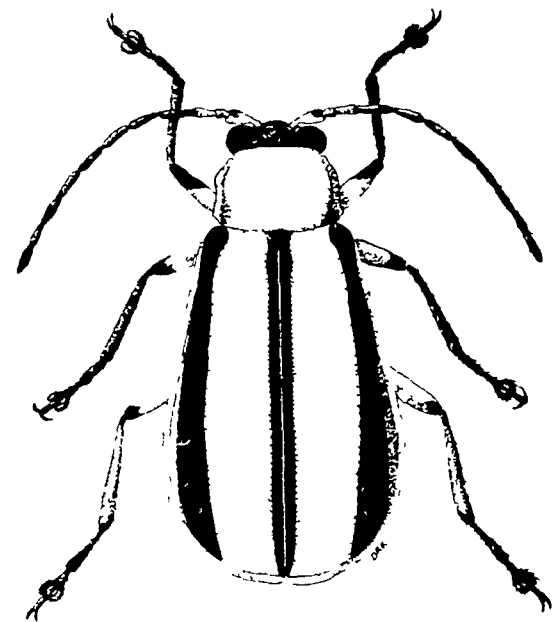
As plants start to emerge, they eagerly move to their favorite hosts. The female beetles lay about 100 eggs over a long period of time, producing one generation each year.

With the hatching of the eggs, the young cucumber beetle worms begin to feast on roots, fruits, and vines.

The adult beetle finally makes its debut in late Summer or early Fall.

The baby and adult beetles do the most damage to the young plants emerging from the soil. The shock of having huge holes chewed in their tender leaves severely stunts or even kills the plants.

As if deforming the plant and causing its death wasn't bad enough, the beetle's attack opens the door for other plant enemies, such as bacterial wilt. If the plant might have survived the beetle's onslaught, it rarely can survive the bacterial invasion.



How can the skirmish with the cucumber beetle be avoided. In some instances, a practical defense is obtained by covering the young plants with hot caps or netting.

When the protection is

removed, sprays are usually required to control the beetles. Penn State advises that plants be sprayed

weekly with methoxychlor 50 percent wettable powder—2 tablespoonfuls per gallon of water.

Thomasville 4-H meets

BAIR — The monthly meeting of the Thomasville 4-H club was held May 27, 1980 at the 4-H Center, Bair.

The following upcoming events were discussed: June 6, 1980, Family Movie Night and Strawberry Roundup;

June 10, 1980, five county day camp; June 21, 1980, Chicken Bar-B-Que; June 23-27, 1980, Leadership Congress.

The next meeting will be June 24, 1980 with practice for the 4-H Olympics.



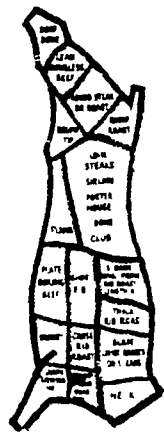
C.H. Thomas Sons

CUSTOM BUTCHERING

SIDES of BEEF
SIDES of PORK

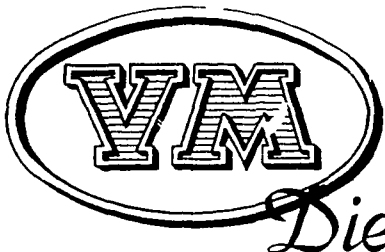
• CUT • WRAPPED • FROZEN
"Our Own Country Dressed Meats"

CITY MARKETS & PARK CITY
NEW DANVILLE PIKE 717-872-5072



SINCE 1913

REPOWER With VM DIESEL

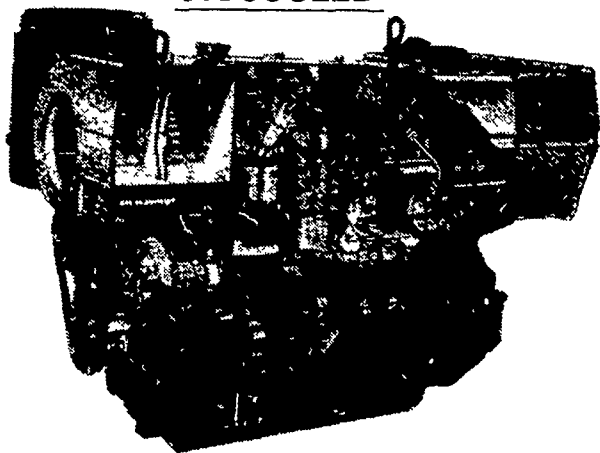


Harvesters, Haybines,
Tractors, Cornpickers,
Balers, Hydraulic
Systems, Corn Binders
Choppers

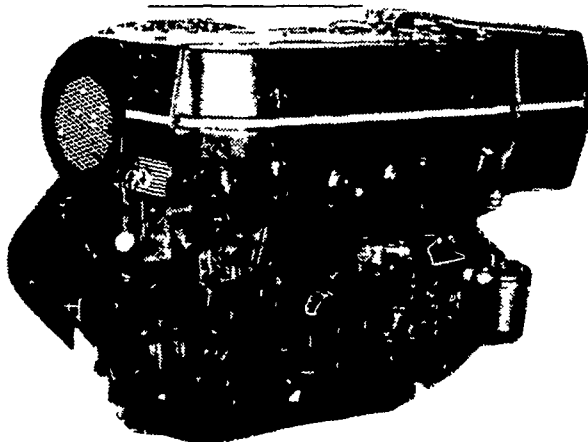


All New HR Series

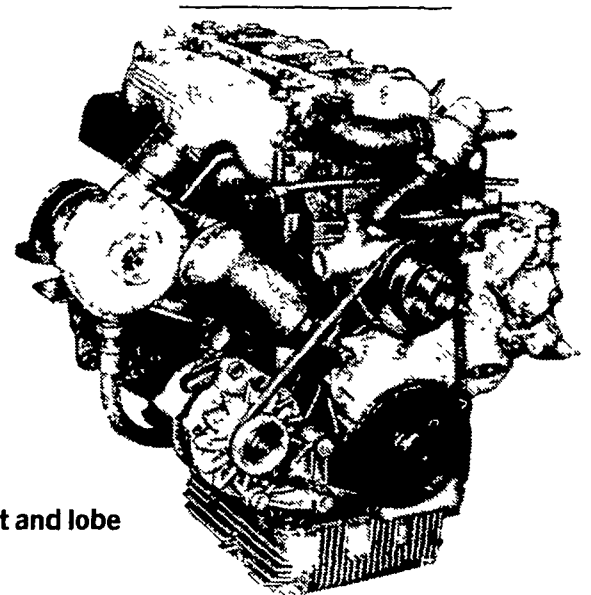
OIL COOLED



AIR COOLED



WATER COOLED



General Features:

- Integrally cast cylinders with inserted and removable wet type cylinder liners
 - Light hypereutectic alloy pistons
 - Extra-resistant steel connecting rods alloyed with special alloy head bearings
 - Surface hardened steel crankshaft
 - Drop-forged, casehardened and tempered steel camshaft
 - Anti-friction cast-iron tappets alloyed
 - Cast-iron tunnel type crankcase
 - Rotary injection pump with mechanical governor
 - Force-feed lubrication with built-in circuit and lobe type pump
 - Diaphragm pump feed
 - Oil and fuel filters with integral type element.
- Special structure and patented engine with consequent increases in performance and easier operation with low weight/output ratio low smoke emissions.
- Engine based on a design "modulus" formula which allows a maximum parts standardization and interchangeability.

Ask For Horsepower Ranges Of Above
THE "RIGHT FROM THE START" DIESEL ENGINE LINE
FOR FAULTLESS PERFORMANCE

USED DIESELS

- ★ VM 1306 V SERIES
- SR 2 Lister
- SR 3 Lister
- HRS 6 Lister
- 1 Cylinder Deutz
- DVA 2200 Slanz

QUEEN ROAD REFRIGERATION

Box 67, Intercourse, PA 17534
Phone: John D. Weaver - 717-768-9006 or 768-7111
or Answering Service - 717-354-4374

24 HOUR SERVICE