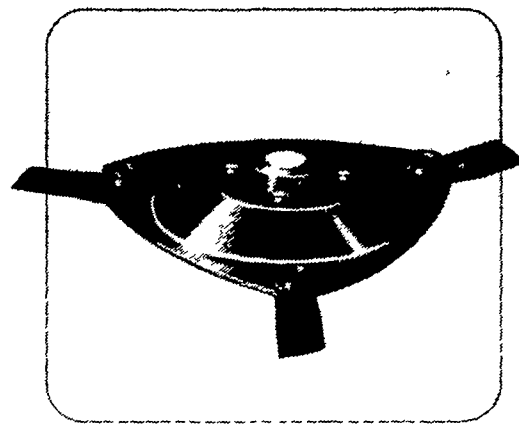
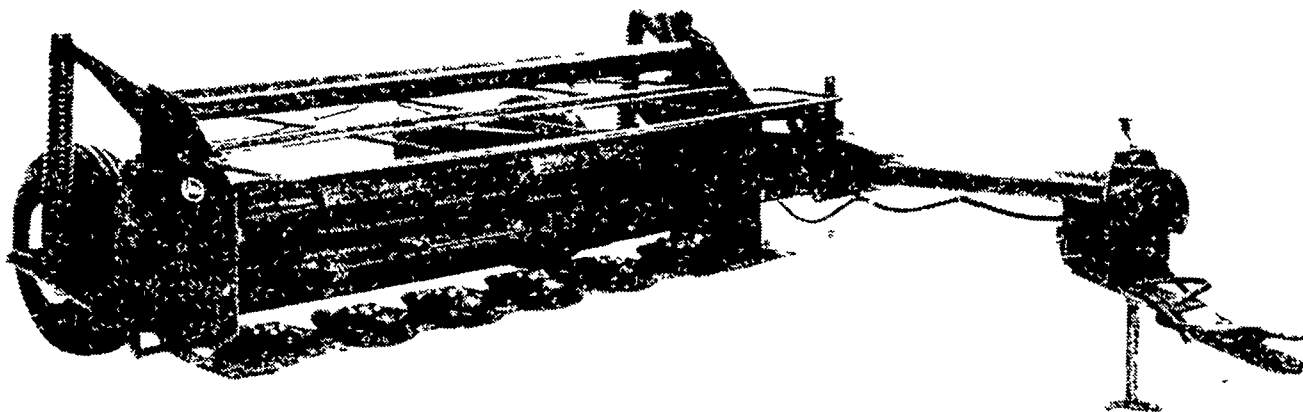


# MAKE YOUR HAY THE BETTER WAY!



**disc mowers  
mower-crimpers / conditioners**



**mower-crimper  
KM 240**

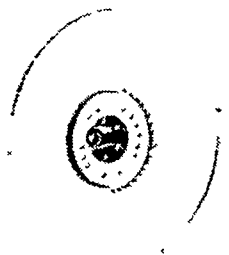
Latest machine to join the Vicon mower range is the new trailed KM mower-crimper, which incorporates the same cutter bar as the Vicon Discus disc mower CM

240. Mounted above the mower bar are a pair of profiled rubber rolls which condition the crop immediately after cutting. The conditioning effect can be varied by changing the pressure between the rolls. Setting the machine for

transport or action is done hydraulically. Skids can be set for various cutting heights. A collapsible shield and a cover of heavy duty plastic provide for guards according to international safety standards.

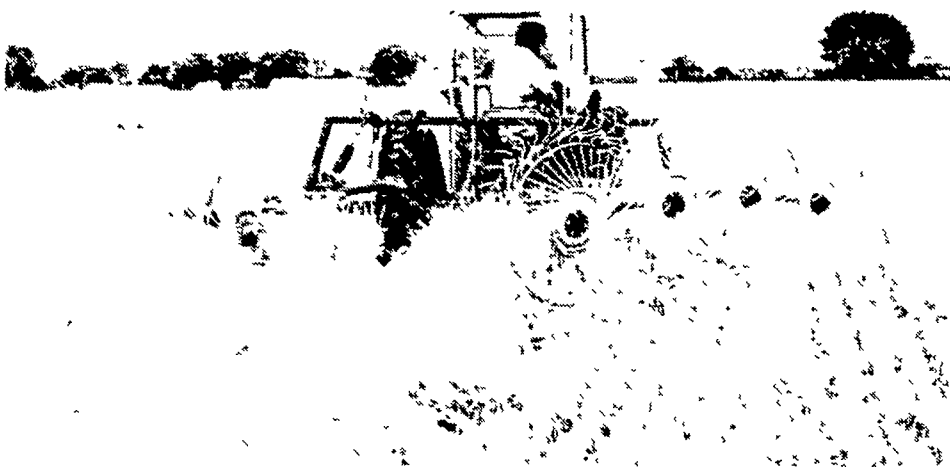
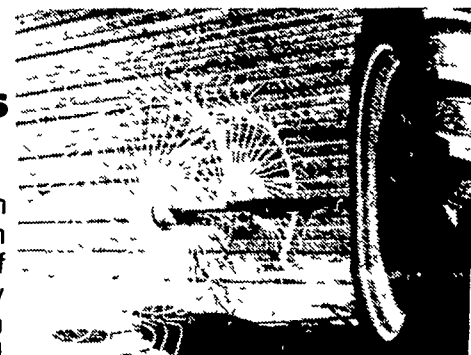


**THE FIRST ECONOMICAL  
RAKE FOR BIG BALERS...**



**fingerwheel  
rakes / swathturners**

The Vicon Windrow Turner can be mounted on the three-point hitch or to the front frame or front axle of most tractors. Speeds hay drying by rolling the windrow over just half a turn. Individual tines walk around rocks and other obstacles and go into depressions to get all the hay, even on the roughest ground.



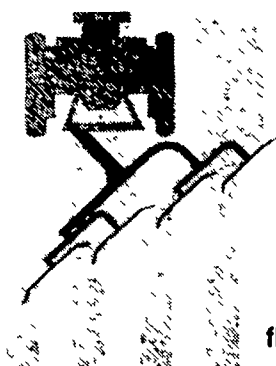
## TRAPEZE V-RAKE

The Vicon Trapeze is the perfect companion tool for the big round baling system. It incorporates two Acrobat frames joined together for a total of eight fingerwheels. This creates a working width of up to 20 feet when raking up a windrow five feet wide. Fingerwheels are ground-driven so wearing parts are cut to the minimum — gears and sprockets are eliminated altogether. A 35 HP tractor is all the power you need. Best of all, Vicon's Trapeze is the lowest cost V-Rake on the market today.

**HERE'S  
A REAL  
WINNER!**



Available in 3 pt. mounted or Horse Drawn Cart mounted.  
Vicon Wheel Rakes work both for Raking -  
OR - Flip them over, and -  
Fluff two swaths in one pass!



fluffing



raking



the  
better  
idea from  
Holland

Vicon Farm Machinery, Inc.  
P. O. Box 6313 3741 Cook Blvd.  
Chesapeake, Virginia 23323

**INTERESTED?  
Why Not Call For A  
Field Demonstration?**

### ZOOK'S FARM STORE

R.D. #2 HONEY BROOK  
1 mile West of Honey Brook on Rt. 322 then North on Reservoir Rd  
Call 215-273-2943

**STORE HOURS:** Mon., Wed., Fri 7 AM to 9 PM  
Tues & Thurs 7 AM to 6 PM  
Sat 7 AM to 12:00 Noon