

Poultry Markets

Weekly New York Egg Market

	From Friday, May 30 to June 6				
	Fri.	Mon.	Tues.	Wed.	Thurs.
WHITE					
Jumbo	66	66	66	66	66
Ex Large	59	59	59	59	59
Large	56	56	56	56	56
Mediums	46	46	46	46	46
Pullets	38	38	38	38	38
BROWN					
Ex Large	72	73	73	73	73
Large	69	70	70	70	70
Mediums	Unquoted				
Pullets	Unquoted				
Peewees	Unquoted				
Off Grade					
Large	51	51	51	51	51
Checks	28	28	28	28	28

Tone: Demand slow. Offerings ample.
Copyright 1980 by Urner-Barry

Nest Run Eggs

Prices are from Egg Clearinghouse, Inc. (ECI) Durham, N.H. and reflect trading prices for gradable nest run eggs (GNR) on ECI, a nationwide trading center for producers, packers and marketers. GNR eggs are classified by weight in 30-dozen cases, and traded in lots of either 300 or 750 cases. Prices are FOB buyers dock, and are computed Tuesday and Thursday of each week. This week's prices for each classification were

Classification	Net Weight Per Case	June 3 Tuesday	June 5 Thursday
Class 1 - Large	48 lbs.	41	42
Class 2 - Large	45 lbs.	38	38
Class 3 - Medium	42 lbs.	33	33
Class 4 - Small	39 lbs.	28	28
Breaking Stock	48 lbs.	36	36
Checks	48 lbs.	29	29



Copyright 1980 by Lancaster Farming
P.O. Box 366 - Lititz, PA 17543
Office: 22 E. Main St., Lititz, PA 17543
Record-Express Office Building
Phone: Lancaster 717-394-3047
or Lititz 717-626-1164

Robert G. Campbell, Publisher
E. Curtis Harler, Editor
Sheila M. Miller, Associate Editor
Patricia M. Kauffman, Staff Writer
Dick Anglestein, Staff Writer

CORRESPONDENTS
Laurel Shaeffer, Berks County
Bernville 215-488-7475
Jane Bresee, Bradford County
Ulster 717-358-3346
Ruth Ann Benedict, Franklin County
Waynesboro 717-762-4398
Sally B. Bair, Lancaster County
Columbia 717-285-4926
Sue Kauffman, Lancaster County
Peach Bottom 717-548-3131
Vivian Paul, Northampton County
Bath 215-837-1363
Joyce Bupp, York County
Seven Valleys
Patty Greek, York County
Delta 717-862-3536

Subscription Price
\$7.00 per year, \$12.00 - 2 years
\$10.00 per year outside of
PA, NJ, MD, DE, NY, VA & WV

Established November 4, 1955
Published every Saturday
by Lancaster Farming, Lititz, PA
Second Class Postage paid at Lititz, PA 17543
USPS 304-040

For address change form or new subscription
see Classified Section.

Members of Newspaper Farm Editors Assn., Pa. Newspaper
Publishers Association, and National Newspaper Association.

Delmarva Poultry

Wednesday, June 4
Report supplied by USDA
RTC movement generally improved to a fairly good position in most quarters. Slaughter schedules continue fairly heavy. Today's LTL asking prices held unchanged at 41 on Plant and 42 on U.S. Grade A. Advance interest improving slowly. Live supplies ample at heavy weights at some plants, desirable at others. Undertone firm.

Current broiler/fryer negotiated prices for immediate delivery includes, mostly multiple drop shipments to New York City from Delmarva.

RANGE: U.S. Grade A 40-42½; Plant Grade 39-41½; Premium X U.S. Grade A 45.00.

WTD. AVG.: U.S. Grade A 41.69; Plant Grade 40.75; Premium X U.S. Grade A 45.00.

X - includes special services, selected competitive brands, etc.

Philadelphia Eggs

Wednesday, June 4
Report supplied by USDA
EGGS: Prices unchanged. Cartoning demand improving in some quarters for first of the month activity. Offerings though irregularly distributed, fully adequate for needs. Undertone steady. Prices to retailers: sales to volume buyers, consumer grades white eggs in cartons, delivered store door.

A Extra Large 55½-58; A Large 54½-57; A Medium 44-46.

Western Maryland Market

Tuesday, June 3
Report supplied by auction
BUTCHER CATTLE: Fat Steers Quality Good, Bidding Active! Choice 1000-1300 lbs. 58.85-60.50; Heifers High Choice 900-1100 lbs. 58.25-61.50; Good 700-900 lbs. to 55.75; Cows 200 lower; High Yielding Utility 45.50-47.00; Standard & Utility 42.00-45.00; Canners 40.00-43.00; Shelly 40.00 Down; Bulls Few offered; Good 1290-1720 lbs 51.10-54.75.

BUTCHER HOGS 50 cents over last week. Top Hogs 30 60; Bulk 215-240 lbs 29.35-30 60; 240-260 lbs 28.85-30 25; 195-210 lbs 28.00-30 00; 285-320 lbs 23 50-25 60; Sows 350-600 lbs. 21.00-23 25; 250-340 lbs (thin) 16 50-20 50; Boars 400-700 lbs 22 25-22 60.

VEAL CALVES: Larger run, Demand good. Tops, to 100 00, Good-Choice 85 00-100 00, Standard 70 00-85 00, Light Calves 68 00-75 00; Weak & Rough 67 00 Down.

CALVES RETURNED TO FARM. Holstein Heifers 75-95 lbs 100 00-140 00, Holstein Bulls 95-120 lbs 100 00-117 00, 90-100 lbs 80 00-100 00, Beef Type 75-100 lbs 85 00-125 00, Few 140 00-155 00.

LAMBS \$2.00 Higher. Choice 70-110 lbs 65 00-69 00, Good 70-90 lbs 59 00-64 00.

STOCK CATTLE. Demand good for all classes. Stock Steers 300-600 lbs 71 00-78 00, 600-850 lbs 57 00-69 00, Stock Heifers 400-700 lbs 57 00-65 00, Holsteins 450-800 lbs 66 00-86 00, Stock Bulls 350-650 lbs 57 00-67 00.

PIGS AND SHOATS. Large run, Steady to 2.00 higher. By the Head 15-30 lbs 8 00-14 00, 30-60 lbs 15 00-24 00, By the Lb 60-130 lbs. 24 00-28 50, 160-170 lbs to 25 00, Stock Boars 185-300 lbs. 20 00-22 25.

N. E. Weekly Shell Egg Report

Wednesday June 3
Report supplied by USDA
Prices paid per dozen Grade "A" Brown eggs in cartons delivered to retail stores

	Ex. Large	Large	Medium	Small
MASS +	70-73	68-70	55-57	35-42
Mostly	70-71	68-69	55-56	39-40
N HAMP	68-75	65-72	51-58	30-37
Mostly	70-73	68-70	53-56	32-35
R I	77-78	74-75	60-61	39-40
VERMONT	75-83	72-79	58-67	-
Mostly	77-79	74-75	60-65	-
MAINE	75-76	72-73	58-59	37-38

+ Includes Central and Western Sections only

Fogelsville Poultry

Fogelsville, Pa.
Tuesday, May 27
Report supplied by USDA
(Prices paid dock weights, cents per pound, except where noted)

HENS, LIGHT TYPE: range 10.

HENS, HEAVY TYPE: range 27-37, mostly 37

PULLETS range 45

ROASTERS range 35

DUCKS range 35

DRAKES range 89.

GEESE: range 47.

RABBITS: range 60-91, mostly 80.

GUINEAS range 1.60-1.67, mostly 1.60.

PIGEONS (Per Pair): range 2.00-4.90, mostly 2.00.

TOTAL COOPS SOLD: 189.

Tuesday, June 3
HENS, LIGHT TYPE: range 5-10, mostly 10

HENS, HEAVY TYPE: range 20-37, mostly 30.

PULLETS: range 45

ROASTERS: range 28-35, mostly 30.

DUCKS: range 79-97, mostly 97.

DRAKES: range 79.

RABBITS: range 35-89, mostly 80-81.

GUINEAS: range 1.79-1.81, mostly 1.79.

PIGEONS (Per Pair): range 1.75-2.10, average 1.80.

TOTAL COOPS SOLD: 230.

Baltimore Eggs

Wednesday, June 4
Report supplied by USDA
Demand only fair. Supplies adequate.
Cartoned eggs prices to retailers, state graded (min one case sale) white
Grade A Large 59-61
Grade A Medium 49-51



Eastern Pa. & N.J. Poultry

Wednesday, June 4
Report supplied by USDA
Prices light type hens unchanged though a weaker undertone prevails in some quarters. Processor demand fair for adequate farm offerings. Offerings of heavy type hens fully adequate for a light steady call.

Prices paid at farm: light type hens 5-7, mostly 6½-7. F.O.B. Plant: 8-9, mostly 9.



TOP OF THE HOG MARKET
DANVILLE LIVESTOCK MARKET
OLD ROUTE 11, DANVILLE, PA 17821
717-275-2880

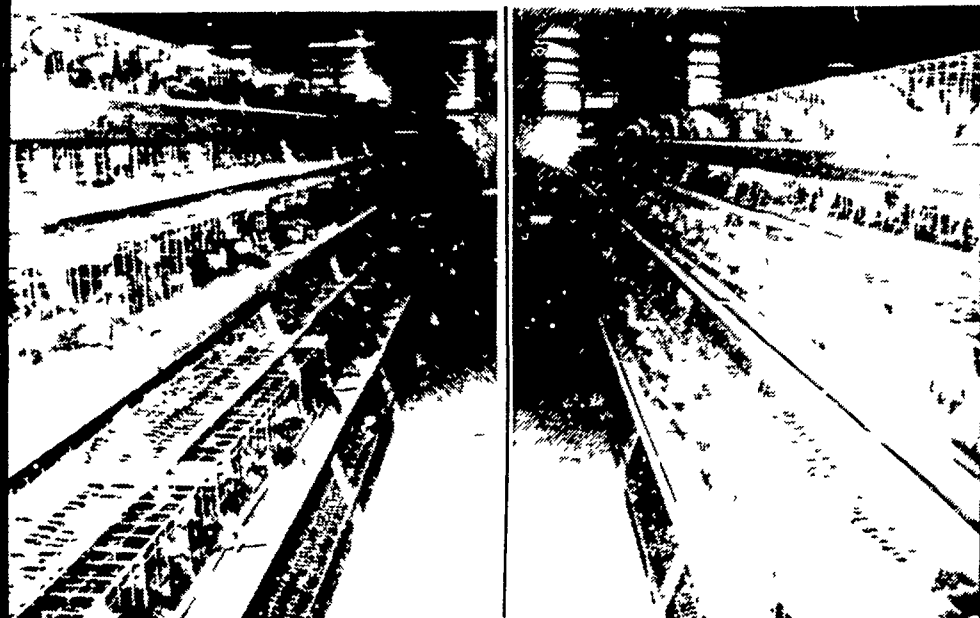
HORSE SALE HELD 3rd SATURDAY OF THE MONTH

Market your cattie & hogs the auction way.

Sale every Monday 2 P.M.
Melvin M. Lehman (Owner)

Moyer's DEKALB

for the Discriminating Poultryman



Brown egg layers used to be only economically housed in litter-floor houses. The DeKalb Warren Sex Sal-Link has broken through that tradition of discrimination. They are excellent producers in cage operations as well.

Whether in floor or cage houses, brown or white egg layers, Moyer's DeKalb offers:

A Bird for all Reasons

Moyer's CHICKS, INC.

DEKALB BROWN & WHITE EGG LAYERS
Quakertown, PA. 18951
(215) 536-3155

HUBBARD WHITE MT. BROILERS